

ONE HOUR
PARKING
8 AM - 5 PM
EXCEPT
SUNDAYS

This yearbook may contain images, language, or other content that could be offensive to modern users. The content may be disturbing and offensive, but should be viewed within the context of that period. The material is being presented as part of a historical record and in no way reflects the values of Missouri Western State University.



the yearbook 1958

st. joseph junior college

advisor—mrs. roberta reimer

co-editors—suzanne spears, larry englehart

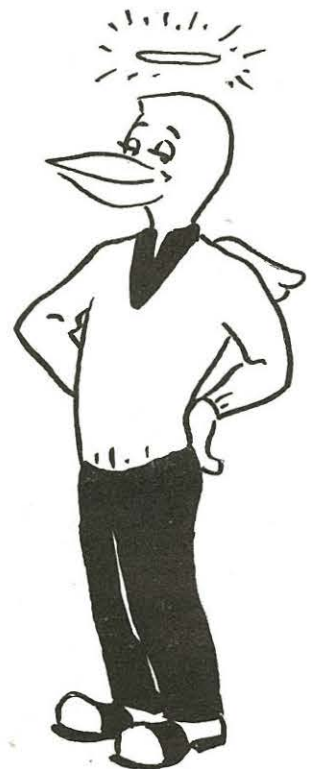
who me?



I suppose I should explain who I am. I am a Griffon, commonly known as a Griffie; but even more, I am the boys and girls, the teachers, the dean, and the helpers of this Junior College. I am talked about, scorned, and edited to preserve the spirit of the school for the past year and to recall the every day college life—its joys, its hopes, its tragedies, its attainments, its aspirations and its pleasures. This is my purpose for the year nineteen hundred and fifty-eight in the St. Joseph Junior College. If I accomplish this purpose my mission is complete.

i'm it!

Yes, I am a Griffon. And this Griffon, our school annual is for you, to keep alive the personal contacts and more or less intimate friendships that are formed during the years of college. So it is with this in mind that I present myself—The Griffon, and sincerely hope that those who turn my pages will derive more of the real joy of living. However, if you do not read why I am it when you first thumb through your book, I will not feel neglected; but in the future I shall be with you, a memory of your years of college at J. C.





This Is Junior College

title page	2
the griffon.....	3
the administration and faculty.....	5
the student body.....	14
the sophomores	16
the freshmen.....	34
organizations	41
athletics	54
activities	64
memories of "58".....	72

the faculty

Clara L. Albrecht
 Orrel M. Andrews
 Nelle Blum
 W. D. Bracken
 Helen B. Brown
 Dena Clark

Ina Culver
 Helen Gettys
 Edgar E. Haller
 Marian Harvey
 Louise Churchill Lacy
 Roland L. Lanser



CLARA L. ALBRECHT

Subjects: French, German, Physical Education.
 Colleges: University of Missouri, University of Southern California, Middlebury Language School, Rocky Mountain School of Languages.
 Degrees: B. S. in Education, M. A.
 Activities: French Club, German Club, W. A. A.

ORREL M. ANDREWS

Subject: Biology.
 Colleges: Wichita University, Kansas University, University of Washington.
 Degrees: A. B., A. M.
 Activities: Natural Science Club.
 Hobbies: Dolls, Art, Stamps, Photography.

NELLE BLUM

Subjects: Philosophy, Psychology.
 Colleges: University of Oklahoma, Columbia University, New York; Universities of California, Chicago, Kansas, Colorado, Penn State.
 Degrees: A. M., A. B.

W. D. BRACKEN

Subject: Physics.
 Colleges: Yale, Baylor, University of Chicago, University of Iowa, University of Missouri.
 Degrees: A. B., A. M., LL.B.



EDGAR C. LITTLE

As dean of men, Mr. Little has given much in the way of counseling. He also is an excellent sponsor for the Engineers' Club.



HELEN B. BROWN

Subject: Spanish.
 Colleges: University of New Mexico, University of Wisconsin, National University of Mexico, Middlebury Language School.
 Degrees: B. A., M. A.
 Activities: Spanish Club.

DENA CLARK

Subject: Librarian.
 Colleges: Northwest Missouri State College, George Peabody College for Teachers.
 Degrees: B. S. in Education, B. S. in Library Science.

INA CULVER

Subject: Art.
 Colleges: University of Missouri, Colorado State College of Education.
 Degrees: B. S., M. A.
 Activities: Art Club, Stage Design.

HELEN C. GETTYS

Subject: Psychology.
 Colleges: Junior College, University of Missouri.
 Degrees: B. S., M. S.
 Activities: Psychology Club.
 Hobbies: Traveling.

EDGAR E. HALLER

Subject: Athletic Director, Coach.
 Colleges: Idaho University, Texas Western University.
 Degree: B. A.
 Hobby: Sports.

MARIAN HARVEY

Subjects: Social Sciences, Sociology.
 Colleges: Northwestern University, University of Chicago, University of Wisconsin.
 Degrees: A. B., A. M.
 Activities: Phi Theta Kappa.
 Hobbies: Reading, Gardening.

LOUISE CHURCHILL LACY

Subject: English.
 Colleges: St. Joseph College, University of Missouri, University of Colorado, University of Iowa.
 Degrees: B. A., M. A.
 Activities: Dramatics, Delta Psi Omega Sponsor.

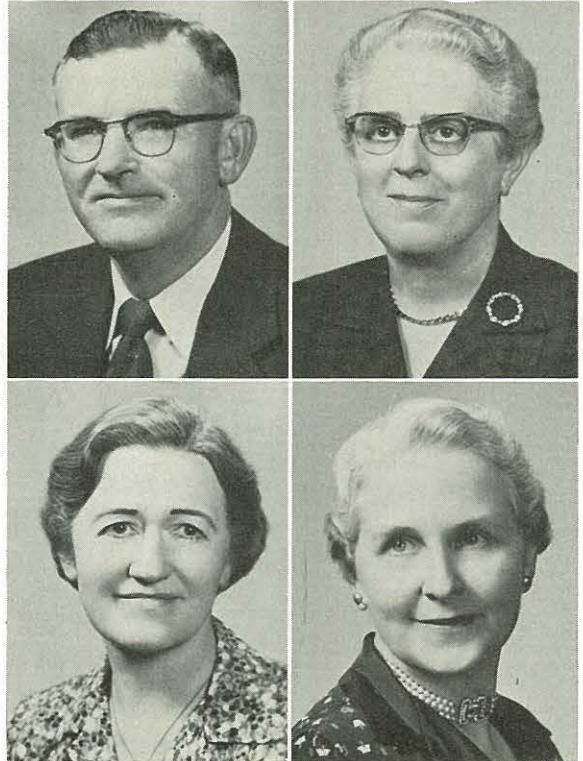
ROLAND L. LANSER

Subjects: Economics, History.
 Colleges: University of Missouri, University of Kansas.
 Degrees: M. A., B. S.
 Hobbies: Gardening, Church, Young People's Work.

the faculty

Edgar C. Little
 Muriel M. Lomax
 Glenn E. Marion
 Elizabeth Phelan
 Frank S. Popplewell
 Roberta S. Riemer

Lois Jane Roper
 Celia F. Sutherland
 Richard B. Taylor
 Lillian R. Watkins
 John R. Yancey
 Radiance Zollinger



Miss Nelle Blum has benefitted many students by her generous aid and guidance. Her wisdom and outlook has been of great value.

EDGAR C. LITTLE

Subject: Chemistry, Vocational Counselor.
 Colleges: Cotner College, University of Iowa, Universities of Nebraska, Colorado.
 Degrees: B. S., M. S.
 Activity: Engineers' Club Sponsor.
 Hobby: Woodworking.

MURIEL M. LOMAX

Subject: Health Education.
 Colleges: New York University, University of Kansas City.
 Degrees: B. A., M. A.
 Activities: Director of Health and Physical Education, School District of St. Joseph.
 Hobbies: Travel, Fishing, Photography, Reading.

GLENN E. MARION

Subject: Pre-Engineering.
 Colleges: Maryville State, Colorado State, Oregon State, Rolla School of Mines.
 Degrees: B. S., M. S.
 Activities: Engineers' Club, Stage Construction.
 Hobbies: Gardening, Crafts.

ELIZABETH PHELAN

Subject: American History, Algebra.
 Colleges: Junior College, St. Mary College, Creighton University.
 Degrees: A. S., B. S., M. S.
 Hobby: Travel.



FRANK S. POPPLEWELL

Subject: American History, Government.
 Colleges: Kansas State College, Pittsburg, University of Missouri.
 Degrees: B. S., M. S., M. A.

ROBERTA RIEMER

Subject: Music.
 Colleges: Park College, Chicago Musical College, Missouri State Teachers, Colorado University, Columbia University, Northwestern University.
 Degrees: A. B., M. M.
 Activity: Choir.
 Hobby: Chamber Music.

LOIS JANE ROPER

Subjects: Mathematics, Physics.
 Colleges: Northwest Missouri State College, University of Missouri.
 Degrees: B. S., A. M.

CELIA F. SUTHERLAND

Subject: Education.
 Colleges: St. Joseph Junior College, Northwest Missouri State College, University of Kansas City.
 Degrees: A. S., B. S., M. A.

RICHARD B. TAYLOR

Subject: English.
 Colleges: Northeast Missouri State College, University of Missouri.
 Degrees: B. S., B. J., M. A.
 Activity: Griffon News.
 Hobbies: Reading, Fishing.

LILLIAN R. WATKINS

Subject: Mathematics.
 Colleges: St. Joseph Junior College, University of Chicago, University of Missouri, University of Michigan, Columbia University, Northwestern University.
 Degrees: Ph. B., A. M. in Spanish, A. M. in Math.
 Hobby: Driving a car.

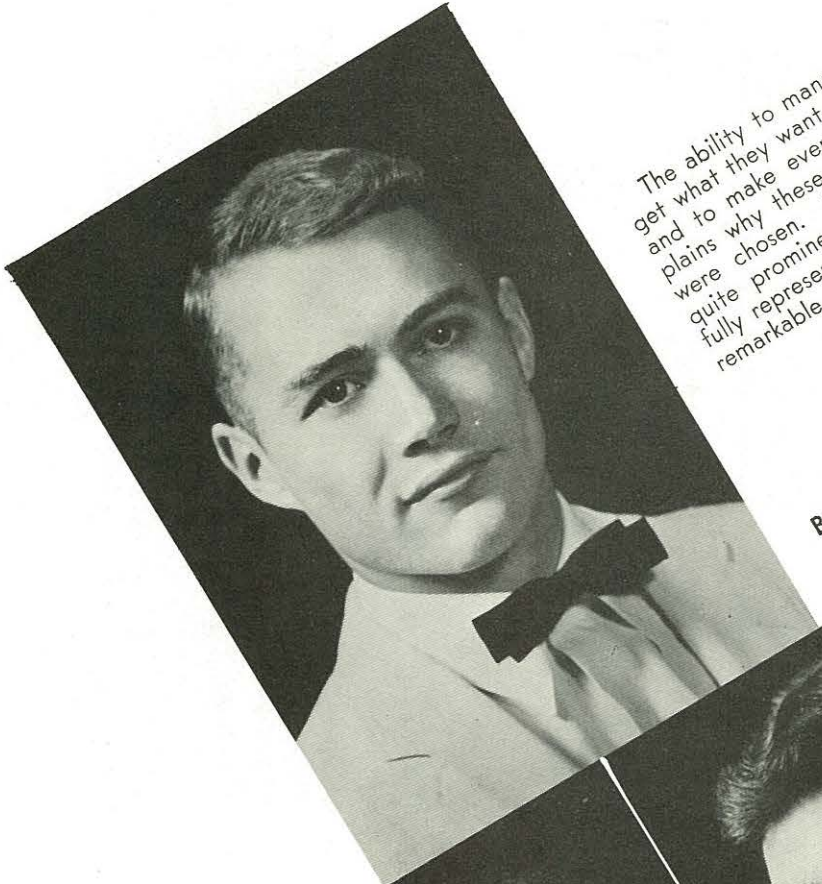
JOHN R. YANCEY

Subject: Microbiology.
 Colleges: Central Missouri State College, University of Kansas City, University of Colorado, University of Missouri.
 Degrees: B. S., M. S.
 Hobbies: Fishing, Gardening.

RADIANCE ZOLLINGER

Subjects: Registrar, Treasurer.
 Colleges: St. Joseph Junior College.
 Degree: Junior College Certificate.

officers of the student body



The ability to manage and direct, to get what they want, when they want it; and to make every moment count explains why these student body officers were chosen. Their effective work is quite prominent and they have faithfully represented the student body in a remarkable way.

BOB BALL
President



ROGER KRAMER
Vice-President



SHIRLEY SNEED
Secretary-Treasurer

FIRST SEMESTER SENATE



Back Row: Roger Brown, Jerry Hopper, Buddy Sumpter, Bud Taylor, Bob McCoppin. **Second Row:** Suzanne Spears, Roger Kramer, Jim Hord, Nancy Ritchie. **First Row:** Susie Kerns, Bob Ball, Shirley Sneed, Judy Buster.

SECOND SEMESTER SENATE



Back Row: Roger Brown, Wallie Smith, Ron Walker, Jerry Hopper, Buddy Sumpter, Carol Freeman. **Second Row:** Jane Agee, Linda Gardner, Roger Kramer, Jim Hord, Carole Bryant, Ronda Wachter. **Front Row:** Mary Frances Purcell, Susie Kerns, Bob Ball, Shirley Sneed.

CABINET



Don Garrett



Mary Jane Stewart



Jim Patten

sophomore honor students

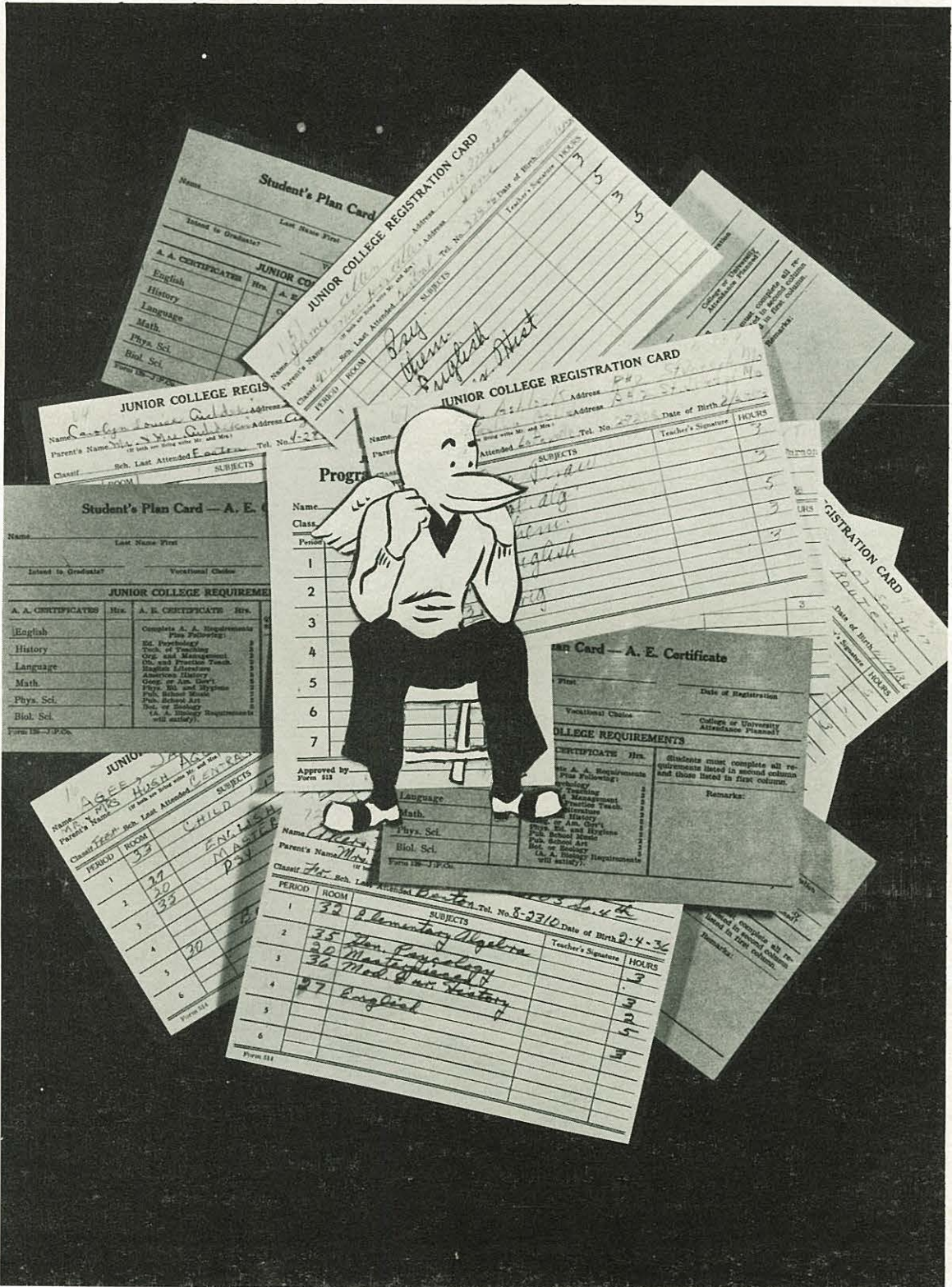
These two girls have received the highest scholastic rating in the sophomore class of 1958. It is interesting to note that these students also are outstanding in leadership and service at Junior College and in extra curricular activities. Both are members of Phi Theta Kappa and are certainly deserving of the distinction of being the high ranking members of the graduating class this year.



Joann Hummel



Maudie Chivington



What is Junior College made of?
STUDENTS, of course!

student body committees



QUEEN CORONATION COMMITTEE

Jim Hord, Jerry Hopper, Suzanne Spears, and Roger Kramer.



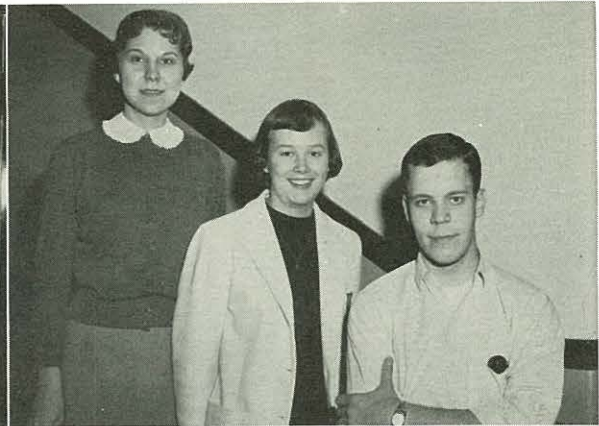
ELIGIBILITY COMMITTEE

Judy Buster, Jim Hord, and Roger Kramer.



HOMECOMING SALES COMMITTEE

Buddy Sumpter, Jerry Hopper, and Susie Kerns.



ASSEMBLY COMMITTEE

Suzanne Spears, Ann Moncrief, and Jim Patten.



CHRISTMAS DANCE COMMITTEE

Buddy Sumpter, Roger Brown, Jerry Hopper, Jim Hord, Roger Kramer, Susie Kerns, Nancy Ritchie, and Shirley Sneed.



FLOAT COMMITTEE

Judy Buster, Suzanne Spears, Shirley Sneed, Roger Brown, and Denny Turner.

the sophomores



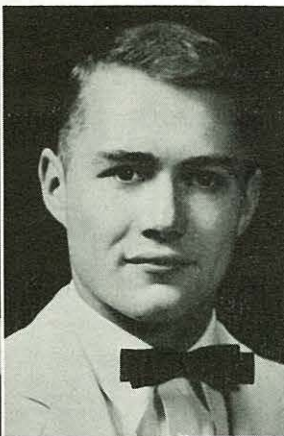
SOPHOMORE CLASS OFFICERS

Ready to go to class are Nancy Sue Morehead, Secretary; Jim Hord, President; and Jerry Hopper, Vice-President.

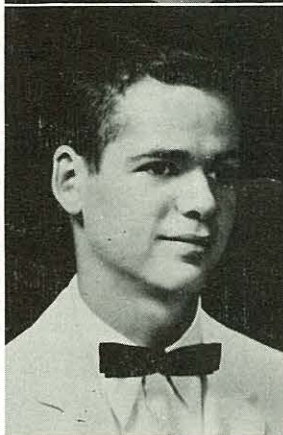
Au revoir! We are now bidding farewell to Junior College. Two years ago this class began its college career with great enthusiasm. We left behind the Freshman year almost unnoticed, but coming back as Sophomores, storming the doors of old J. C. with renewed energy. Some went to other colleges and some students did not return. But now we have reached the peak of learning at Junior College. The Associate in Arts, Science or Education simply means—two down and two to go until graduation.

We must leave, but we will take along the experiences of our education and always cherish the hours spent in studying, the joys in making new friends, and in the sharing of individual talents. To our instructors every student owes a debt of gratitude which can only be repaid by attaining standards worthy of men and women that have had a college education. Let Junior College be proud to claim us as alumni.

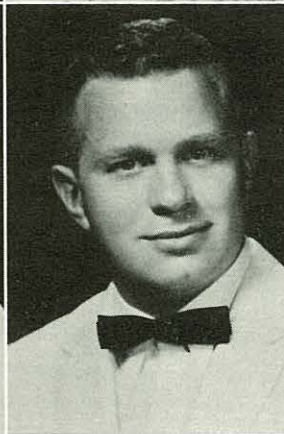
Jane Ann Agee
Phyllis Atkins
Robert Kenneth Ball



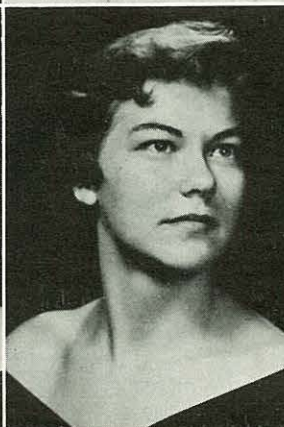
Tom Bauman
Sharone Sue Bezona
Larry Bonham



Maudie Chivington
Melvin Clark
Gary Lee Coder



Sharon Ann Conley
Pat Corbin
Darleen Costable



the sophomores

Jane Ann Agee, A. A.

Pep Squad, Delta Psi Omega, French Club, Phi Theta Kappa, Senate Member, Yearbook Staff, Footlights, Operetta, All-School Play, Choir, Committees, Convocations, Secretary of Delta Psi Omega.

Phyllis Atkins, A. S.

Girls' Intramural Sports, W. A. A.

Robert Kenneth Ball, II

J. C. Certificate, Chairman of Intramural Sports, Dramatics Workshop, Mace, Science Club, Student Body President, Senate Member, Footlights, Committees, Convocations, Dramatics Workshop Board, J. C. Invitational Basketball Tourney, Melody Mill Programs.

Tom Bauman

J. C. Certificate, Science Club.

Sharone Sue Bezona, A. E.

Pep Squad, Footlights, Committees.

Larry Bonham



Maudie Chivington, A. A.

French Club, Phi Theta Kappa, Choir, Griffon News Page Editor, Operetta, Committees, President French Club, Treasurer Phi Theta Kappa.

Melvin Clark

J. C. Certificate, Varsity Basketball, Basketball Letterman, Boys' Intramural Sports, Science Club.

Gary Lee Coder, A. E.

Engineers' Club.

Sharon Ann Conley

J. C. Certificate, Pep Squad.

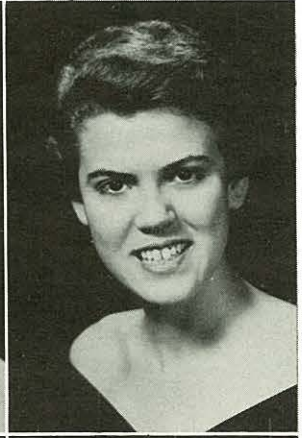
Pat Corbin, A. E.

Secretary W. A. A., Pep Squad, Pep Band, Footlights, Operetta, Choir, Committees.

Darleen Costable



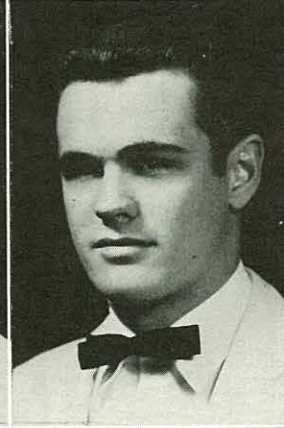
Ben Crowley
Gerald Culley
Judy Dake



Helen Dischner
Diane Douglas
Jeanne Douglas



Marian Kay Douglas
Richard Duckworth
Kay Eberle



Kathryn Karol Elder
Charlotte Ann Ellis
Ruth Anne Eychaner



the sophomores

Ben Crowley

J. C. Certificate, Yearbook Staff, Operetta.

Gerald Culley

Judy Dake, A. E.

President of Pep Squad, Treasurer of Psychology Club, Yearbook Staff, Operetta, Choir, Committees, Convocations, Usher for Footlights, Graduation.

Helen Dischner, A. E.

W. A. A., Pep Squad, Science Club, Convocations, Science Kermis.

Diane Douglas

Jeanne Douglas



Marian Kay Douglas, A. S.

Richard Duckworth

J. C. Certificate, Footlights.

Kay Eberle



Kathryn Karol Elder

J. C. Certificate, Girls' Intramural Sports, W. A. A., Pep Squad, French Club, Historian of Phi Theta Kappa, Manager of Girls' Basketball Team, Vice-President of Art Club.

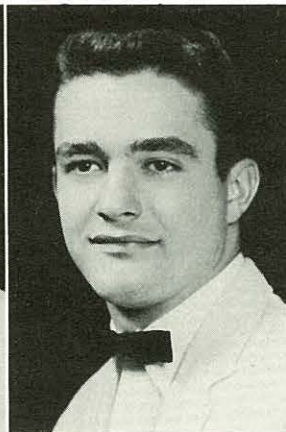
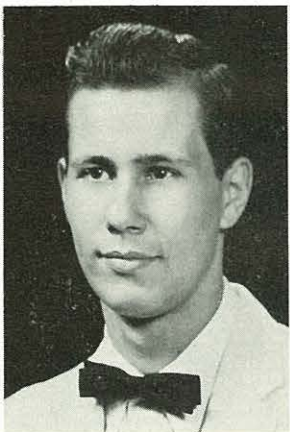
Charlotte Ann Ellis, A. A.

Spanish Club.

Ruth Anne Eychaner, A. E.

Library Staff.

Edward K. Fattig
John M. Feuerbacher
Donald L. Garrett



Margaret Giffin
Carol Diane Glancy
Delores Hamon



Rosemary A. Hausman
Richard K. Henderson
Wm. A. Hoffelmeyer



Barbara Hoffman
Carolyn Hoffman
Gerald Hopper



the sophomores

Edward K. Fattig
J. C. Certificate,

John Martin Feuerbacher
J. C. Certificate, Art Club, Engineers' Club, Stage Crew.

Donald L. Garrett
J. C. Certificate, Science Club, Senate, Cabinet, Footlights, All-School Play, Committees, Convocations.



Margaret Giffin, A. E.
Pep Squad.

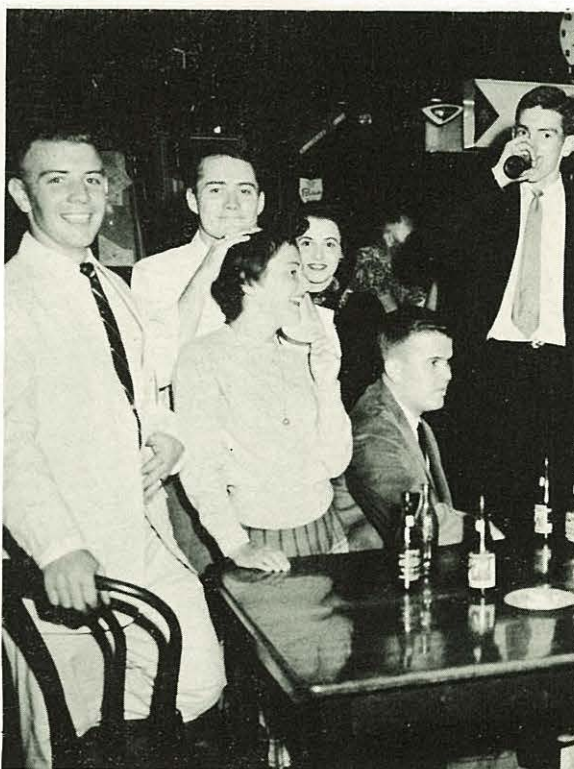
Carol Diane Glancy
J. C. Certificate.

Delores Hamon, A. E.

Rosemary A. Hausman, A. S.
Newman Club, Reporter for Science Club, Yearbook Staff, All-School Play, Choir, Convocations.

Richard K. Henderson
J. C. Certificate.

William A. Hoffelmeyer, A. S.
Engineers' Club, Newman Club.



Barbara Ann Hoffman, A. A.
Pep Squad, Art Club, Spanish Club, Phi Theta Kappa, Treasurer of Science Club.

Carolyn Hoffman

Gerald Hopper, A. S.
Boys' Intramural Sports, Pep Band, Delta Psi Omega, Dramatics Workshop, Class Officer, Senate Member, Footlights, Operetta, All-School Play, Committees, Convocations.

James S. Hord
Mary Joann Hummel
Anne Hund



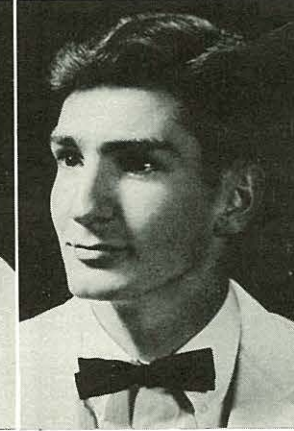
Nadia Iwasyk
Sandra Jackson
Paul Jennings



Betty Johnson
Betty Louise Johnstone
Thomas Judah



George Kemp
David P. Kent
Roger Kramer



the sophomores

James S. Hord, A. A.

Pep Master, French Club, President of Sophomore Class, Senate Member, Griffon News Page Editor, Griffon News Staff, Committees.

Mary Joann Hummel, A. A.

Basketball Queen, Pep Squad, President of Delta Psi Omega, President of Spanish Club, Secretary of Phi Theta Kappa, Mace, Dramatics Workshop, Science Club, Footlights, All-School Play, Dramatics Club Play, Convocations.

Anne Hund

J. C. Certificate, Spanish Club.

Nadia Iwasyk, A. A.

Spanish Club, Science Club, Choir.

Sandra Jackson, A. A.

Cheerleader, Historian of Delta Psi Omega, Vice-President of Phi Theta Kappa, Dramatics Workshop, French Club, Mace, Science Club, Footlights, All-School Play, Convocations.

Paul Jennings, A. S.

Pep Band, Engineers' Club, Phi Theta Kappa.



Betty Johnson, A. E.

W. A. A., Pep Squad, President of Psychology Club, Yearbook Staff, Committees, Convocations, Usher at Operetta, Graduation, Footlights.

Helen Louise Johnstone

J. C. Certificate, Pep Squad, Delta Psi Omega, Spanish Club, German Club, Phi Theta Kappa, All-School Play, Convocations, One-Act Play.

Tom S. Judah

J. C. Certificate, Committees, Convocations.



George Kemp, A. S.

David P. Kent

J. C. Certificate, Griffon News Editor.

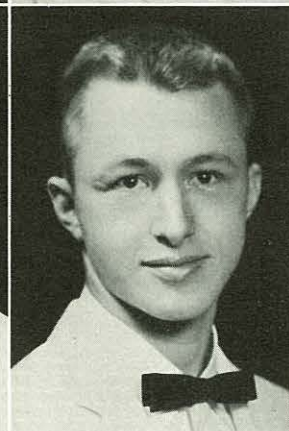
Roger W. Kramer, A. S.

Boys' Intramural Sports, Mace, Student Body Officer, Senate Member, Griffon News Staff, Footlights, Operetta, All-School Play, Choir, Committees, Convocations.

Joyce Lane
Erma Lee
Paul Livingston



George A. Lutz
Robert McCoppin
Robert Lee McNair



Elinor Janice Mabin
Nancy Sue Morehead
Lawrence Morgan



Jeanne Miller
Susan Nash
John Neff



the sophomores

Joyce Lane, A. S.
Operetta, Choir.

Erma Lee

Paul Livingston, A. A.
Footlights.

George A. Lutz, A. S.
Basketball Manager, Pep Band, Engineers' Club,
Footlights, Operetta, Choir.

Robert McCoppin, A. S.
Engineers' Club, Phi Theta Kappa, President, Sen-
ate Member.

Robert Lee McNair, A. S.
President of Engineers' Club, Phi Theta Kappa.



Elinor Janice Mabin, A. A.
Vice-President of Spanish Club, Secretary of
Science Club, Phi Theta Kappa, Psychology Club,
All-School Play, Choir, Convocations.

Nancy Sue Morehead
J. C. Certificate, Pep Squad, Delta Psi Omega,
Dramatics Workshop and Board President of Span-
ish Club, Mace, Phi Theta Kappa, Secretary-Treas-
urer of Sophomore Class, Senate Member, Foot-
lights Director, Footlights, All-School Play, Dra-
matics Club Play, Committees, Convocations.

Lawrence Morgan, A. A.
German Club, President and Vice-President, Phi
Theta Kappa, Science Club, Psychology Club, Year-
book Staff, Griffon News Page Editor.

Jeanne Miller, A. E.

Susan Nash
J. C. Certificate, Attendant, Head Cheerleader,
Dramatics Workshop, Newman Club, Vice-Pres-
ident, Senate Member, Footlights, J. Club, Chair-
man of Melody Mill.

John Neff
J. C. Certificate, Art Club, Art Work for Foot-
lights, Operetta.



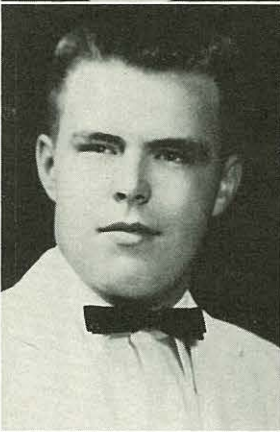
Jim Patten
Louis Ann Pearson
Lyla Lee Pollard



Mary Frances Purcell
Mary Sue Richardson
Nancy Ann Ritchie



Ronald R. Ritter
Frank Schagg
Maurice S. Shier



Sally Schmitt
Lawrence E. Shue
Shirley Sneed



the sophomores

Jim Patten, A. S.

Chairman of Intramural Sports, Delta Psi Omega, Dramatics Workshop, Club Officer, Senate Cabinet, Senate Member, Griffon News Staff, Footlights, All-School Play, Dramatics Club Play, Committees, Convocations.

Lois Ann Pearson, A. E.

Recording Secretary of Phi Theta Kappa, Operetta, Choir.

Lyla Lee Pollard

J. C. Certificate, Pep Squad, Psychology Club, Griffon News Page Editor, Griffon News Staff, All-School Play, Choir, Convocations.

Mary Frances Purcell

J. C. Certificate, Secretary of Spanish Club, Pep Squad, Delta Psi Omega, French Club, Newman Club, Psychology Club, Senate Member, Footlights, Operetta, All-School Play, Choir, Committees, Convocations.

Mary Sue Richardson, A. E.

Vice-President of Pep Squad, Chairman of Concession Stand, Secretary of Psychology Club, Yearbook Sophomore Editor, Committees, Convocations, Usher at Operetta, Graduation, Footlights.

Nancy Ann Ritchie, A. A.

Attendant, Pep Squad, Art Club, Club Officer, Senate Member, Financial Director of Yearbook, Griffon News Page Editor, Griffon News Staff, Footlights, Committees, Convocations.



Ronald R. Ritter, A. S.

Phi Theta Kappa.

Frank Schagg, A. S.

Engineers' Club, Newman Club.

Maurice S. Shier

J. C. Certificate, Science Club, Club officer, Footlights, Operetta, All-School Play, Choir.

Sally Schmitt, A. S.

Cheerleader, Phi Theta Kappa, Science Club, Club Officer, Footlights, Convocations.

Lawrence E. Shue

J. C. Certificate, Science Club, Club Officer.

Shirley Sneed

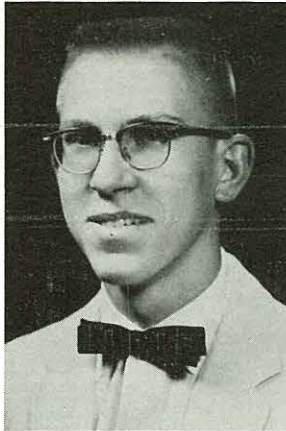
J. C. Certificate, W. A. A., Pep Squad, Phi Theta Kappa, Student Body Secretary-Treasurer, Senate Member, Yearbook Staff, Griffon News Staff, Committees, Convocations, Dramatics Club Play, Girls' Sextet.



Suzanne Spears
Clark Sprake
Kenneth Stams



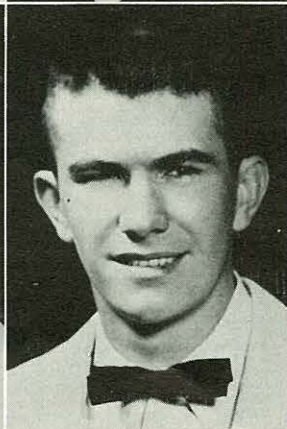
Milton Stark, Jr.
Richard L. Stephens
Mary Jane Stewart



Russell Lynn Stokes
Veda M. Taylor
Sylvia Jeanne Thacker



Roger Thompson
Robert Tietz
Madeleine Verssue



the sophomores

Suzanne Spears, A. A.

Art Club, French Club, Psychology Club, Senate Member, Yearbook Editor, Footlights, Committees, Convocations.

Clark Sprake, A. S.

Boys' Intramural Sports, Engineers' Club.

Kenneth Stams

J. C. Certificate, Art Club, Engineers' Club.

Milton Stark, Jr.

J. C. Certificate, Pep Band, Convocations.

Richard Stephene, A. A.

Delta Psi Omega, Dramatics Workshop, Spanish Club, Club Officer, Footlights, All-School Play, Director of Dramatics Club Play, Convocations.

Mary Jane Stewart, A. A.

Treasurer of Pep Squad, Dramatics Workshop, Spanish Club, Newman Club Officer, Class Officer, Senate Cabinet, Senate Member, Footlights.



Russell Lynn Stokes, A. S.

Phi Theta Kappa.

Veda M. Taylor, A. E.

Phi Theta Kappa.

Sylvia Jeanne Thacker, A. E.

W. A. A., Art Club, Phi Theta Kappa, Choir, Table Tennis Champion.

Roger Thompson

J. C. Certificate, Boys' Intramural Sports, Art Club, French Club, Newman Club, All-School Play.

Robert Tietz, A. S.

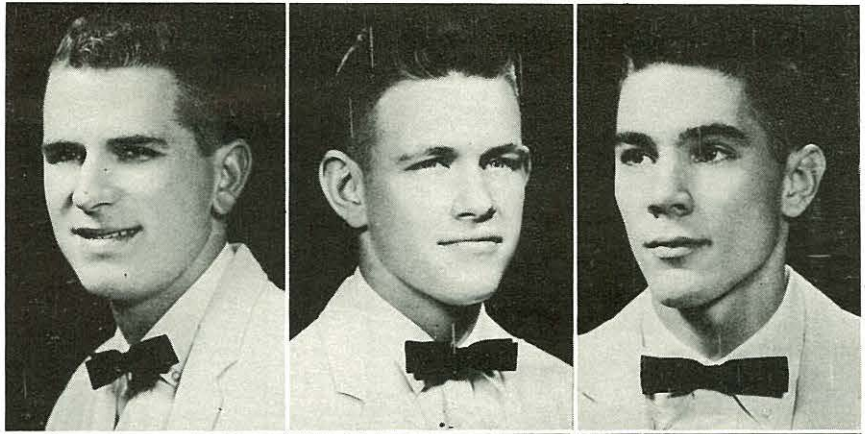
Golf Team.

Madeleine Verssue

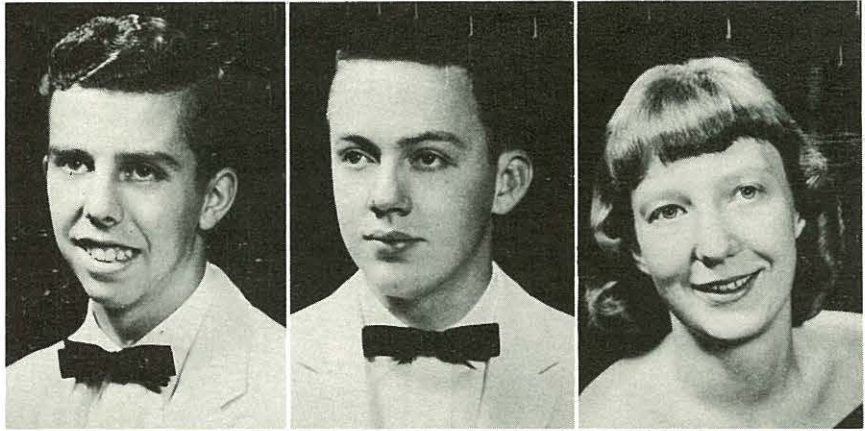
J. C. Certificate, Reporter and President of Art Club, Spanish Club, Newman Club.



Don Vollintine
Clyde Weeks
Roger Allen Weitlich



Charles Marshall White
Wesley F. White
Judy Wildhagen



Margaret Wilson
Jerry Lee Zahner



the sophomores

Donald Vollintine
Varsity Basketball, Basketball Letterman, Track Letterman, Tennis.

Clyde Weeks, A. E.

Roger Allen Weitlich, A. S.
Engineers' Club.

Charles Marshall White, Jr., A. S.
Secretary-Treasurer of Engineers' Club.

Wesley F. White, A. S.
Engineers' Club.

Judy Wildhagen, A. E.



Margaret Wilson, A. E.
Phi Theta Kappa, Griffon News Staff.

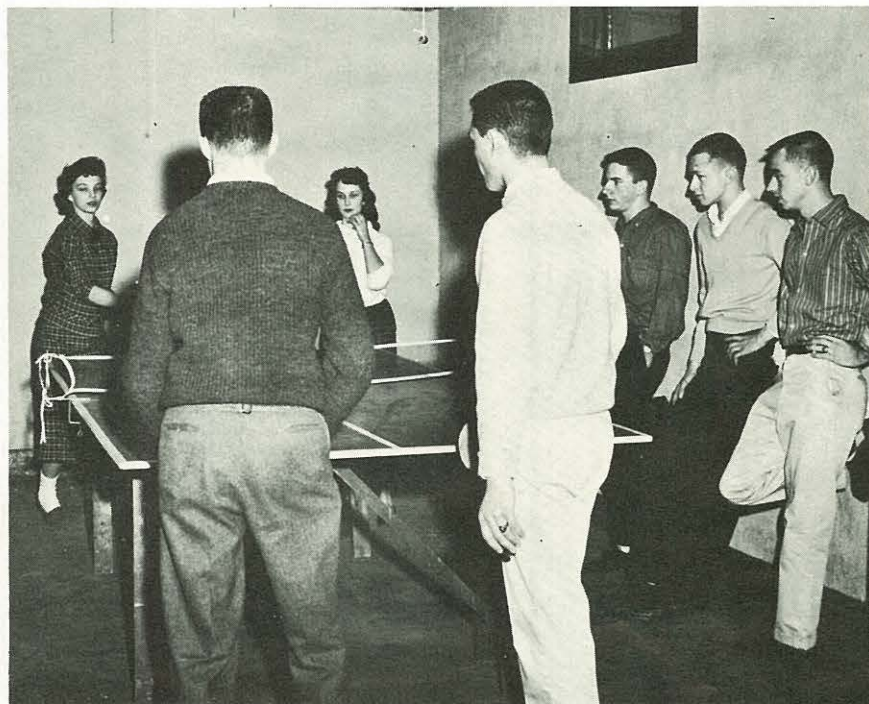
Jerry Lee Zahner, A. A.
Choir, Convocations.



camera shy

James Adle
Jerry Ashlock
Gary Bachman
Mark Bagby
Ed Bartel
Larry Bonham
K. C. Boyle
Emery Bradley
Roger Bradley
David Bridenstine
Donald C. Brown
Harold Callaway
Carl Chatfield
Frank Clark
Charles Cline
Fred Coder
David Conkling
Thomas Dawson
Jim DeNeen
Artis Dewey
Ronald Downs
Jan Elkins
Arthur Felt
Larry French
Larry Gloschen
George Grable
James Grant
Capt. C. E. Green
Marvin Grimm
James Herter
Forrest Hoff
Larry Irwin
Kenneth Johnson
Kenneth Jones

John Joseph
John McLean
Robert McNamara
Clarence Mabin
Joseph Mazur
John Meers
Franz Meier
Earl Moran
David Moyer
Dean J. Murphy
Eldon Morris
Richard O'Konski
James Ozenberger
Donald Parker
Lawrence Poirier
Gerald Prindle
John Punzo
Charles Radcliff
Robert Reynolds
Michael Riordan
Arthur Rocha
Dennis Schalley
Richard Scharff
Larry Schindler
Roger Sigars
Wallie Smith
Robert Snell
Bobby Thompson
Youjin Tokko
William Wachendorfer
A. G. Waitkoss
A. L. Weese
Wilbur Wray





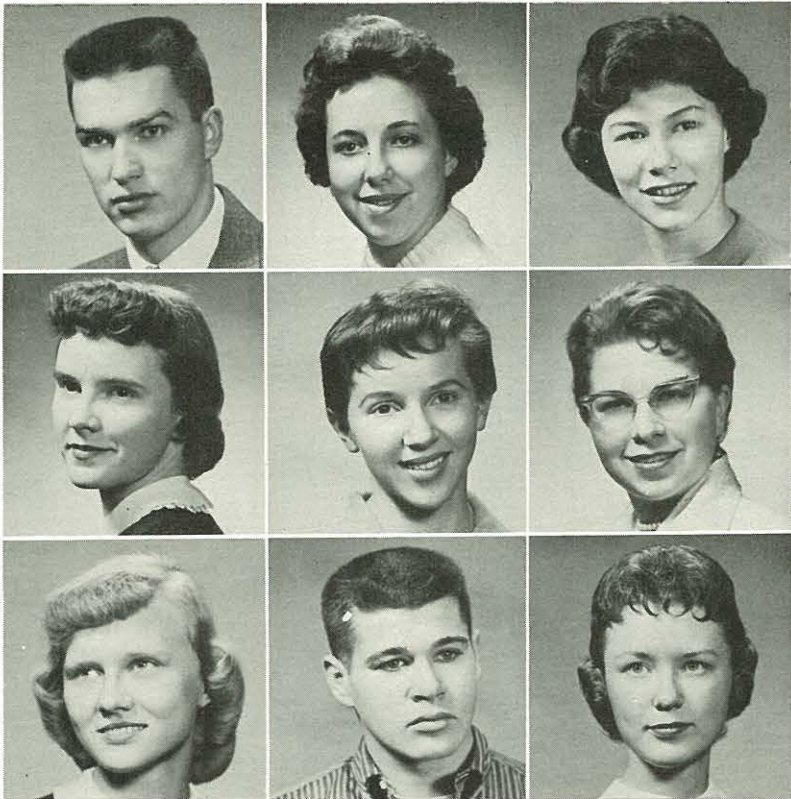
FRESHMAN CLASS OFFICERS

Viewing the list of freshmen yet to have their pictures taken are Buddy Sumpter, President; Ron Walker, Vice-President; and Linda Gardner, Secretary.

We are gradually emerging from a primitive state through a seemingly slow process of education. We have not yet achieved greatness, but have tried to make our faculty feel they are not wasting earnest effort on stony soil. Blessed is he who persisteth long over text books, for his shall be a head of knowledge.

We are beginning to realize that talent is developed in solitude and character in the rush of

the world, also that a great mind must have some channel in which to overflow. So beware! Dramatics, Athletics, Music, Art, and Science, each presents a challenge for each individual student. Freshmen, be eager to receive the responsibilities of an active Sophomore. Be willing to work and maintain the spirit of Junior College, always striving to make it a better place for any girl or boy to further his education.



Addington, Howard
 Anderson, Karen
 Ball, Barbara

Barr, Joyce
 Bazan, Patty
 Boyer, Iona

Bregin, Rita
 Brown, Roger
 Bryant, Carole

the freshmen

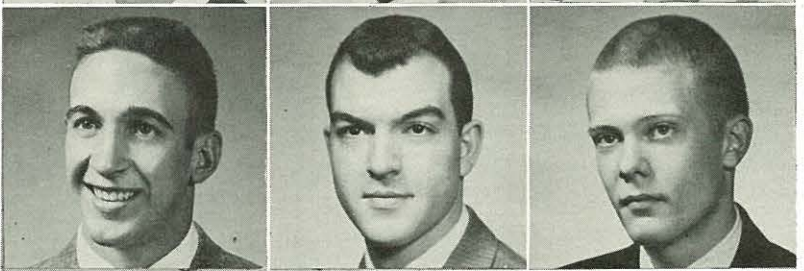
Bundy, Larry
 Burnside, Edna
 Buster, Judy



Campbell, Earnest
 Campbell, Robert
 Carr, Charles



Cox, David
 Crabtree, Gary
 Culver, Steve





Davenport, Arnold
 Denton, Mary Linn
 Doles, Bill

Eastin, Neva
 Eggleston, Carol
 Ellis, Patricia

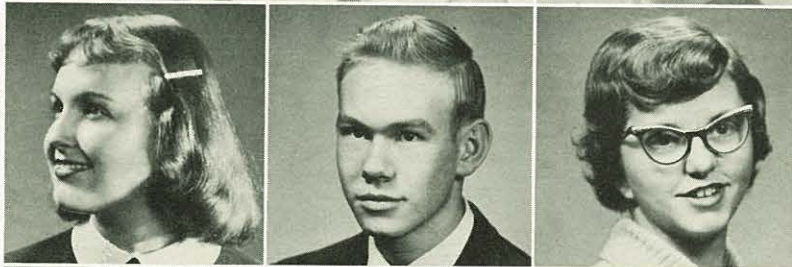
Engelhart, Larry
 Flora Nancy
 Fountain, George

the freshmen

Freeman, Carol
 Frey, Linda
 Gadler, Nancy



Gardner, Linda
 Gerstner, Gordon
 Gieber, Barbara



Hagan, Nola
 Hibbs, Mary Lou
 Hill, Janice





Hill, Linda
 Hilt, Kathryn
 Hoiman, Corman

Holzhauser, Lois
 Howard, Phyllis
 Hughes, Ronnie

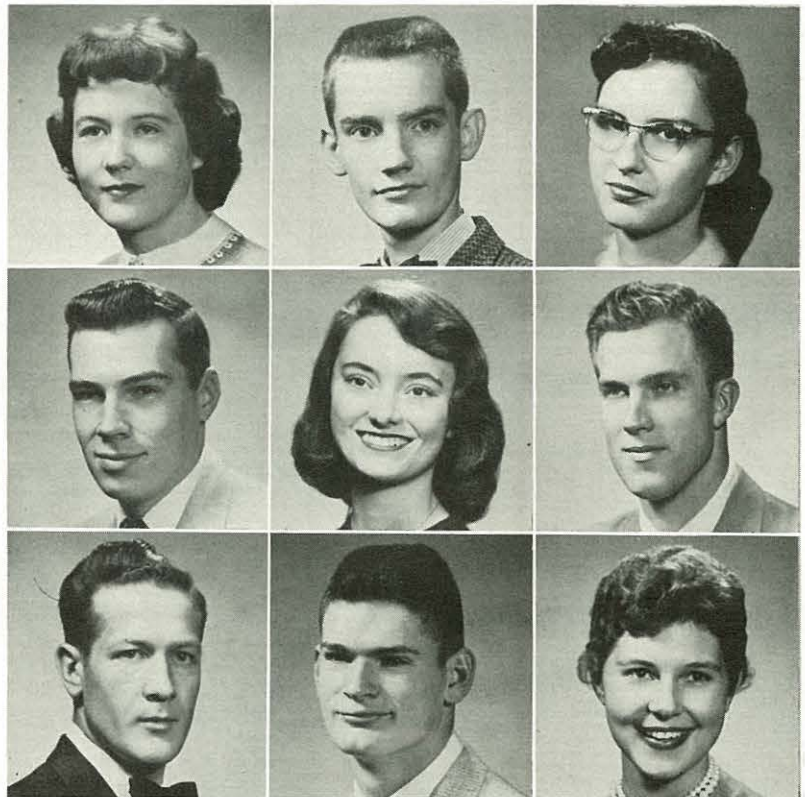
James, Reed
 Jann, Gaile
 Jeschke, Donald

the freshmen

Johnson, Diane
 Jones, James
 Jones, Wanda

Kephart, Charles
 Kerns, Susie
 Kessler, Henry

Kretzer, Richard
 Krumme, Roger
 Kurtz, Romona





Lysaght, Eugene
 Madinger, Marilee
 McManus, Rita

Mazur, Judy
 Milbourne, Marilyn
 Miller, Roger

Miller, Warren
 Minter, Sam
 Moncrief, Ann

the freshmen

Moore, Carol
 Muir, Linda
 Nelson, Frances

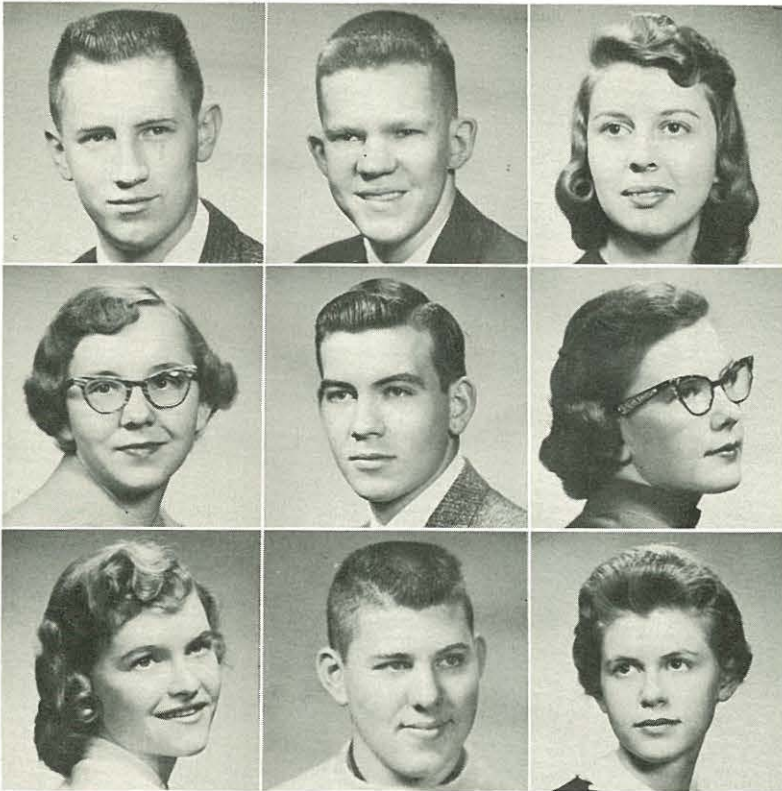


Otte, Lucille
 Pettijohn, Ethel
 Powell, James



Reep, Norma
 Rock, Kathryn
 Roland, Rita





Sawyer, Randall
 Sawyer, Richard
 Schneider, Sharon

Schnute, Loiose
 Schott, Robert
 Shaney, Dixie

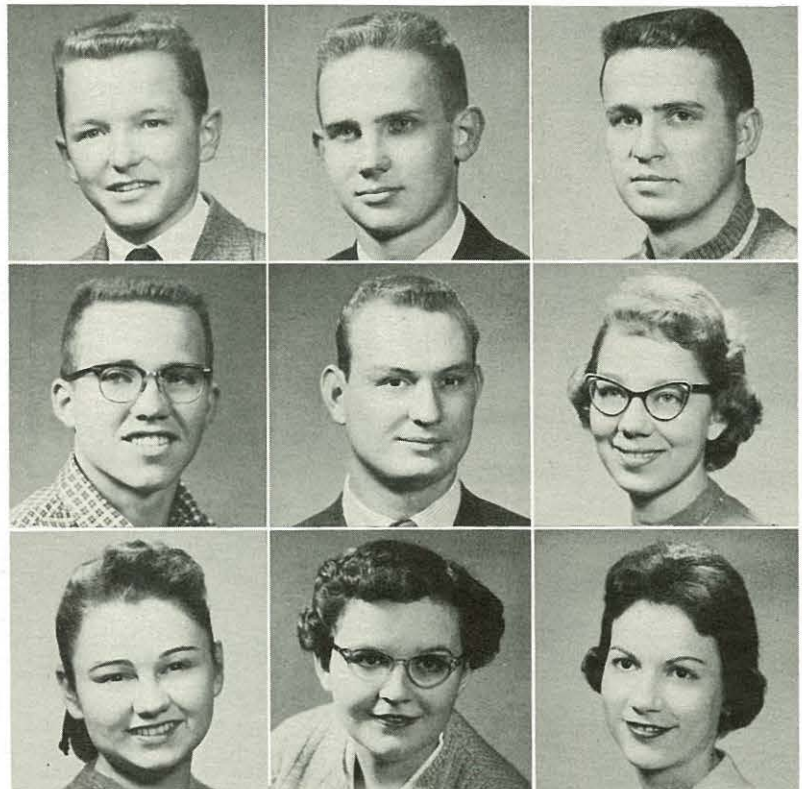
Smith, Valeria
 Stephenson, Bob
 Thomas, Marian

the freshmen

Thompson, Jim
 Tiller, Richard
 Turner, Donald

VanArsdale, David
 Vance, Edwin
 Wachter, Ronda

Wagers, Saralyn
 Wallace, Margaret
 Walton, Judy





Wehmeir, Patricia
Wheat, Joyce
Yurkovich, Gary

Richard Borngesser
Kermit Boyer
Patricia Boyer
William Brooner
Bill Brown
Lynn Campbell
Teddy Campbell
Henry Carmona
James Christie
Lyle Clark
LeRoy Claycomb
Vern Claycomb
Gary Clifton
John Coburn
Harold Colboch
James Courtney
Harry Crowell
Charles Cunnings
Marilyn Dallam

Nancy Ann Absher
Mrs. Margaret Alkins
Mrs. Barbara Allen
Heraclie Almanza
Connie Amos
Bernard Andrew
William Andrew
Carl Arnold
Ronald Arkins
Roger Arst
Ronald Bachali
Roy Barns
Carol Beason
Clarence Bell
Ronald Bibb
Beverly Billings
Walter Blackburn
Brenda Blum
Edward Bollinger

Mrs. Nancy Daniels.
Robert Davis
John DeLaney
Shirley DeVold
Jerry Dinaman
Ronnie Dittmore
Ronnie Drake
Lee Eaton
Jerry Edson
Larry Elder
Homer Farmer
Don Fattig
Gerald Fimple
Howard Flint
Dale Flowers
Edwin Francis
Nancy Funk
John Gallagher
Earl Gardner

camera shy

Nola Gilliland
Larry Glidewell
Francis Gloggner
Georgia Goudy
Ronald Green
Richard Gresham
Ernest Grimes
Mrs. Ardyce Griswold
Darlene Hall
David Harbeck
Joyce Hartnett
Michael Hayes
Richard Hellerich
Alex Hernandez
Aaron Hoffman
Mrs. Judith Hoffman
Carman Holdman
Robert Horning
Melvin Hougas
Etta Howard
Raymond Howell
Charles Hume
Warren Jackson
Wayne Jahnke
Peter Jimenez
Harold Johnson
John Karns
Harold Keck
Patricia Kemmer
Paul Kennedy
Ronald Kennedy
Tamara Kennedy
Shirley Kiser
Nancy Kite
Paul Knapp
Fay Kurtz

Don Lawton
Mrs. Irma Lee
Larry Leith
James Littler
Carol Lockridge
Marian McCausland
Don McCullah
John McGinnis
Erma Maag
Bernie Madel
Robert Mathewson
Richard Meade
Dale Meers
Sam Mejia
Don Meredith
Albert Miller
John Miller
Richard Miller
Judith Molloy
John Morlock
Billy Morris
Karol Myers
Karlton Nash
Lloyd Nauman
Franklin Nichols
Robert Nurski
Charles Obersteadt
Nelson Ozenberger
Jim Paden
Thomas Parisoff
Robert Patton
Kenneth Pearce
Gaylen Pearson
William Pepperd
Gary Phillips
Stanley Pohl

Don Pointer
Joe Price
Larry Przybylski
Clyde Pruett, Jr.
James Quigley
Barbara Rall
Sandra Rasco
Harold Redinger
Robert Reiner
Mark Remington
Jerry Riche
Ruthanna Richlefs
Jake Ridpath
Robert Riggs
Stan Rolinski
Ethel Round
Gerald Rounds
Robert Sanfunett
William Schneider
Judith Schoenfeldt
Leo Schott
Jack Seippel
Judith Sevy
Jerry Sifers
Bill Smith
Willadean Smith
Kendall Snyder
Ronald Sprague
Charles Stamp
Robert Stark
Lavern Still
Francis Stock
Esther Stoner
Kenneth Strawn
Buddy Ray Sumpter
Rachel Swoboda

Tom Swoboda
David Swyhart
Lynn Taylor
Norman Taylor
Thomas Taylor
Ellis Thomas
Delores Thompson
Harvey Thompson
Jim Thompson
Ronnie Tiffany
Richard Trosper
Mrs. Eileen Turner
Michael Vaughn
James Veselich
Mary Vincent
Ronald Walker
Lucy Wallace
Dick Waters
Helen Webster
James Welch
Lawrence Werner
Leon Weston
Judy Whitman
Rose Wickam
John Wiegant
Jimmy Williams
William Wolf
Roger Wilson
Lawrence Wolverton
Mary Wood
Ronnie Wood
Carrol Woodward
Sharon Young
Andrew Ziph
Roland Zirkle



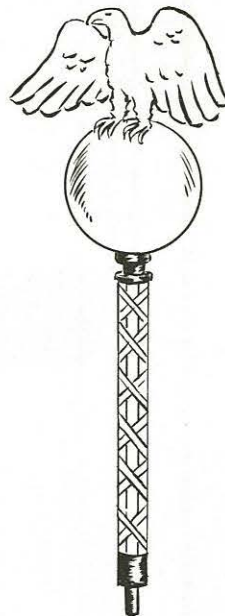
Robert Ball



Roger Kramer



James Patten



Nancy Sue Morehead



Sandra Jackson



Joann Hummel

Mace, as one student stated, "is the Cadillac of all the clubs at Junior College." This well expresses the recognition and honor earned by the students who now are members. Not by scholar-

ship or service alone does one become a member; but by the combined efforts and continual service to Junior College.



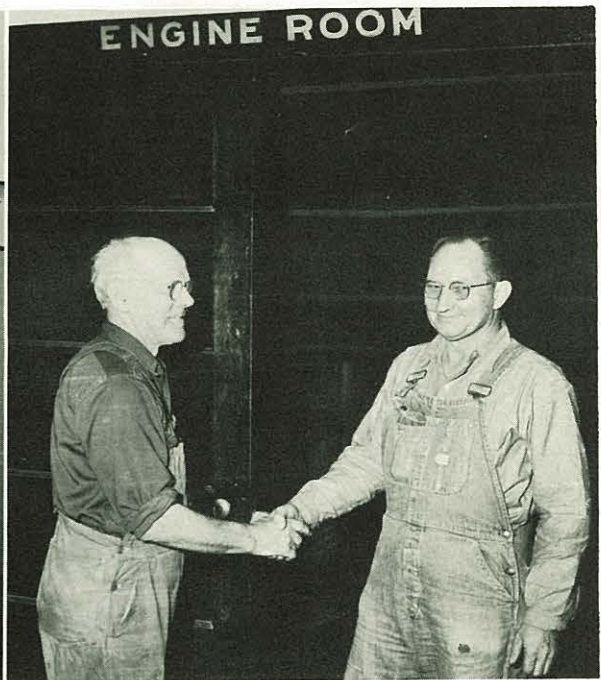
This is the well-known Snack Bar at J. C., and it is usually crowded at noon, between classes, and during free periods. It is the only source of food for the students; whether it be a sandwich or a bottle of pop. Note the picture on the wall is the symbol of the Junior College Griffon.



These two ladies are responsible for the management of the Snack Bar. To Mrs. Geraldine Powell and Mrs. Elizabeth Radke we say "thanks" for service to J. C. students.



Mr. Tom Nash, the custodian, has the task of opening and closing Junior College every day. Keeping the building clean is also his job.



Mr. Tom Stoddart, the retiring engineer, shakes the hand of the man replacing him, Isaac H. Gray. Heating and ventilating the building is his job.



Back Row: Paul Jennings, Nancy Sue Morehead, Lois Holzhauser, Margaret Wilson, Rachel Swoboda, Frank Nichols, Linda Gardner, Jane Agee, Robert McCoppin.
Third Row: Karol Elder, Joann Hummel, Helen Webster, Maudie Chivington, Patty Bazan, Barbara Hoffman, Veda

Taylor. **Second Row:** Linda Frey, Lois Pearson, Helen Johnstone, Larry Morgan, Sandra Jackson, Sally Schmitt, Lynn Stokes. **Front Row:** Shirley Sneed, Rita Bregin, Janice Mabin, Saralyn Wagers, Conan Grace.

phi theta kappa



Officers: Karol Elder, historian; Robert McCoppin, president; Maudie Chivington, treasurer; John Hummel, corresponding secretary; Lois Pearson, recording secretary; Sandra Jackson, vice-president.

Phi Theta Kappa is a national Junior College honor society. Kappa Chapter of St. Joseph Junior College is one of the oldest chapters in the organization, but is still very active in club and school work. This year, under the capable sponsorship of Miss Marian Harvey, the chapter enjoyed a very successful year, as it engaged in some new activities as well as the many traditional ones. The annual project is the compiling and editing of the Junior College Directory. New students at J. C. should strive to meet the qualifications for membership. It is an honor to belong!



Back Row: Susie Kerns, Dick Stephens, Jerry Hopper, Nancy Sue Morehead, Jim Patten. Front Row: Jane Agee, Helen Johnstone, Joann Hummel, Sandra Jackson, Mary Frances Purcell.

delta psi omega



Officers: Joann Hummel, president; Dick Stephens, vice-president; Jane Agee, secretary; Jim Patten, treasurer; Sandra Jackson, historian.

Delta Psi Omega is the National Dramatic Honor Society. Its purpose is to encourage active and co-operative participation in the dramatic program of the school and to give students a broader outlook and a sense of unity with other college students of similar interests. Entrance is gained by acquiring a certain number of points.

spanish club



Back Row: Mary Frances Purcell, Patty Bazan, Dick Stephens, Nancy Sue Morehead, president; Anne Hund.

Front Row: Nadia Iwasyk, Helen Johnstone, Joanne Hummel, Paul Livingston, Madeleine Verssue.

The Spanish Club was formed so that the students of Spanish might have an opportunity to become better acquainted with the Spanish language, lands, and customs. Students who have taken one semester of Spanish at Junior College are eligible for the Spanish Club. The sponsor of the club is Miss Helen Brown.

The French Club was organized to develop the student's ability to speak and understand the French language and to acquaint him with France and the French people. Entrance requirements are two years of high school French or one year of college French. All the meetings and programs of the French Club are conducted in French, under the direction of Miss Clara Albrecht.

french club



Back Row: Karol Elder, Jim Hord, Roger Thompson, Lois Holzhauser, Ethel Pettijohn, secretary. **Second Row:** Rachel Swoboda, Suzanne Spears, Maudie Chivington,

president; Linda Gardner, Jane Agee. **Front Row:** Mary Frances Purcell, Sandra Jackson, Susie Kerns.

german club



Back Row: Larry Morgan, vice-president; Dave Harbeck, Edward Fattig, Stan Roluiski. **Front Row:** Helen Johnstone, president; Linda Hill.

Students who have taken at least one semester of German at Junior College may increase their knowledge of Germany, its people, its geography, and its language by attending the monthly meetings of the German Club. Current German newsreels are sometimes shown at the meetings, which are conducted entirely in German. Miss Clara Albrecht is the sponsor.

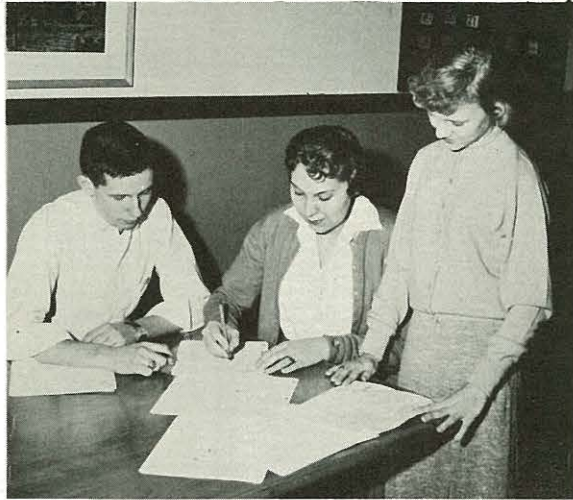
The purpose of the Science Club is to stimulate an interest among students in the natural sciences. Miss Orrel Andrews is the sponsor. A student upon invitation having a "S" average in science courses and a "M" average in other courses may become a pledge. Grades must be maintained for two nine-week periods.

science club



Back Row: Roger Wilson, Ron Walker, Maurice Shier, vice-president; Mel Clark, Frank Clark. **Third Row:** Ronnie Dittmore, Dave Swyhart, Lawrence Shue, president; Rosemary Hausman, reporter; Marian Douglas. **Sec-**

ond Row: Miss Orrel Andrews, sponsor; Nadia Iwasyk, Judy Mazur, Barbara Hoffman, treasurer; Mary Jane Long. **Front Row:** Tom Bauman, Nancy Gadler, Sally Schmitt, historian; Janice Mabin, secretary.



griffon yearbook

Did you say yearbook? Here it is—the Griffon—with a hope that it meets your approval. The drawings, write-ups, and book layout are entirely the work of these students, who received no school credit for their work, but found a lot of good experience and fun in it. The entire staff took subscriptions, distributed books in the spring, and handled various jobs. The actual compiling of the book is in each worker's spare time. Some work was assigned to individual editors of sections, students in clubs, and the co-editors Suzanne Spears and Larry Englehart. The sponsor of the yearbook is Mrs. Roberta Reimer.



Larry Englehart



Suzanne Spears

THE COMMITTEES

- (1) Linda Muir, Rosemary Housman, Valerie Smith, Diane Johnson, Larry Morgan, Marian Thomas.

FRESHMEN AND SOPHOMORE EDITORS

- (2) Freshman editor, Rita McManus; co-editor, Edna Burnside; Sophomore editor, Mary Sue Richardson; co-editor, Betty Johnson.

EDITOR, CO-EDITOR, BUSINESS MANAGER

- (3) Larry Englehart, co-editor; Suzanne Spears, editor; Rita Bregin, business manager.

INDEX EDITORS AND BUSINESS MANAGER

- (4) Judy Wildhagen, index editor; Nancy Ritchie, business manager; Shirley Sneed, index editor.



the griffon news

The purpose of the Griffon News is to inform the students at J. C. what is going on . . . and I do mean going on. Under the direction of Mr. Richard Taylor the workers plot, plan, and cut copy in the morning, on lunch hours or after school. Thanks to the editor and various page editors, especially the new second semester workers, the new comes out on time. When the Griffon News is placed on the head of the stairs in the main hall, one may see anxious students dashing to grab a paper and hurriedly hunt for his or her name in that issue. Wouldn't you?



David Kent

Mr. Richard Taylor

EDITOR, SPONSOR, WORKER

(1) Mr. Richard Taylor, David Kent, Jim Patten.

THE ENTIRE STAFF

(2) Allen Seifert, Larry Morgan, Mike Vaughn, Valerie Smith, Nancy Gadler, David Kent. **Standing:** Linda Gardner, Mr. Taylor, Carol Moore, Bob Ball.



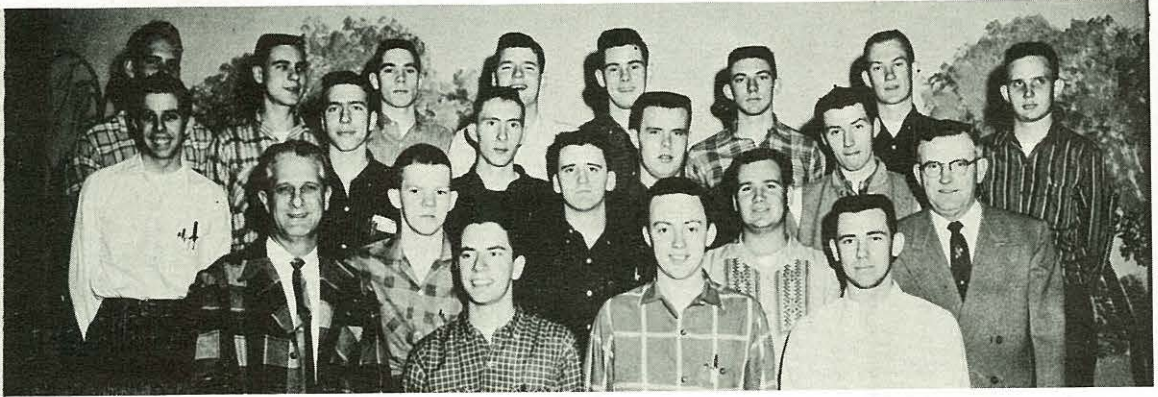
SECOND AND FOURTH PAGE EDITORS

(3) Mike Vaughn, Bob Ball, Maudie Chivington, Larry Morgan, Allen Seifert.

FIRST AND THIRD PAGE EDITORS

(4) Nancy Gadler, Valerie Smith, Carol Moore, Linda Gardner.

engineers' club



Back Row: Walter Blackburn, James Grant, Roger Weitlich, George Lutz, K. C. Boyle, Clark Sprake, Jim Ozenberger, Richard Tiller. **Third Row:** Marshall White, secretary-treasurer; Sam Minter, John Feuerbacher, Frank

Schaag, Harold Redinger. **Second Row:** Lynn Sawyers, Wallie Smith, Eugene Wilson, Mr. Little, sponsor. Glenn Marion, sponsor; Robert McCoppin, Wesley White, Paul Jennings.

The Engineers' Club is open to all students planning to become engineers. The club is under the direction of Mr. Glenn Marion and Mr. Edgar Little. In the fall the club held an engineers' banquet and took a trip to Kansas City to tour the T. W. A. Maintenance Center and the Ford Motor Company's assembly plant. Later in the year they visited the engineering department of the University of Missouri at Columbia, Missouri.

Whenever posters, scenery or publicity is needed at Junior College, it is the members of the Art Club that are responsible. In order to be eligible for membership in the club, a student must be talented in painting and drawing. Under the direction of Miss Ina Culver the club took a trip to the Kansas City Art Institute and went on a number of sketching trips. The purpose of the club is to stimulate interest in art of the past, in contemporary art, and in future paintings.

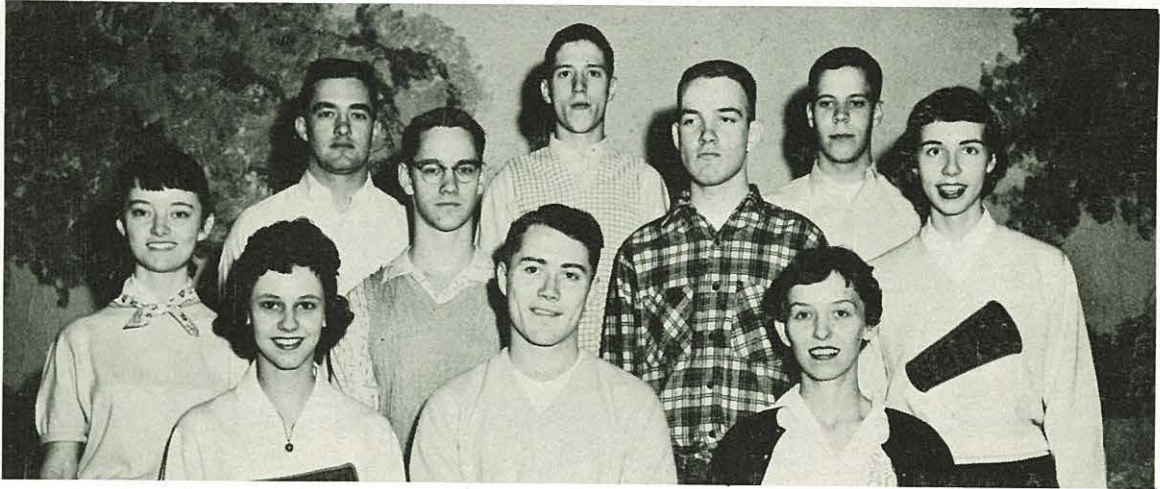
art club



Back Row: Karol Elder, vice-president; Bill Roumas, John Feuerbacher, Gary Yurkovich, John Neff, Larry Englehart. **Second Row:** Miss Ina Culver, sponsor; Barbara

Hoffman, Dave Swyhart, treasurer; Suzanne Spears, Richard Gresham. **Front Row:** Edna Burnside, secretary; Stan Roluiski, Madeleine Verssue, president; Nancy Ritchie.

dramatics workshop



Back Row: Don Garrett, Dick Stephens, Jim Patten, board member. **Second Row:** Susie Kerns, board member; Earnest Campbell, Jerry Hopper, Nancy Sue More-

head, board member. **Front Row:** Joann Hummel, Bob Ball, Board member; Sandra Jackson.

Dramatics workshop is for the enjoyment of students interested in acting of any sort. If you sing, dance, or simply talk dramatically—join this club sponsored by Miss Louise Lacy.

The Psychology Club meets every month at the State Hospital under the guidance of Mrs. Helen Gettys. The activities of the club consist of planning programs and serving refreshments to the patients. A course in Psychology is the only requirement to become a member.

psychology club



Back Row: Larry Englehart, Roger Krumme, Jim Hord, Edwin Vance, Mike Vaughn, Richard Borngesser, Dean Miller. **Third Row:** Judy Wildhagen, Charles Peters, Carole Bryant, Carol Joy Freeman, Linda Frey, Linda Muir, Suzanne Spears. **Second Row:** Larry Morgan, Bob

Stephenson, Frances Purcell, Betty Johnson, president; Mary Sue Richardson, Mary Vincent. **Front Row:** Janice Mabin, Marilyn Milbourne, Kathy Hilt, Pat Wehmeir, Nancy Flora, Lucille Otte.

newman club



Back Row: Judy Mazur, Jerry Sifers, Dale Flowers, vice-president; Ron Bachali, secretary; Bob Schott, Rosemary Hausman. **Third Row:** Stan Rolinski, Frank Schaaq, Wallie Smith, Madeleine Verssue. **Second Row:** Mike

Riordan, Frances Purcell, Patty Bazan, Helen Webster, Pat Kemer, Thomas Parisoff. **Front Row:** John Mallon, president; Susie Nash, vice-president; Rita Bregin, Mary Jane Stewart, secretary; Rita McManus.

The Newman Club is composed of Catholic students at Junior College. It is an organization with objectives "to deepen the spiritual and enrich the temporal lives of its members through a balanced program of social, religious, and intellectual activities." They hold meetings every two weeks and Father Patrick Tobin is chaplain.

What a smiling force of freshmen nurses are attending Junior College this year! The Missouri Methodist Hospital grants full-time scholarship in order that the nurses may study such courses as chemistry, comparative anatomy and sociology as a part of their training. Their participation in activities is limited due to their full schedule of training.

student nurses



Back Row: Louise Schnute, Fay Woodward, Nola Gilliland, Kay Wickham, Shirley De Vold, Shirlie Kaiser, Judy Schoenfeldt, Linda Lomax, Ramona Kurtz, Erma Maag. **Second Row:** Sandra Rascoe, Georgia Goudy, Gail Jann, Nancy Funk, Mary Lynn Denton, Joyce Barr,

Dixie Shaney, Mary Lou Hibbs, Ruthanna Rickleffs, Carol Lockridge. **Front Row:** Phyllis Howard, Joyce Wheat, Margaret Wallace, Karen Anderson, Deloras Thompson, Neva Lea Eastin, Connie Amos, Darleen Constable.

choir



Back Row: Kermit Boyer, Jerry Zahner, Richard Born-gesser, George Lutz, Roger Kramer, Tom Swoboda, Bob Gould, Earnest Campbell, Dean Miller. **Third Row:** Janice Hill, Rachel Swoboda, Rosemary Hausman, Judy Dake, Lois Holzhauser, Judy Wildhagen, Maudie Chiving-

ton, Linda Gardner. **Second Row:** Pat Corbin, Rita Rowland, Sharon Schneider, Linda Hill, Pat Boyer, Susie Kerns. **Front Row:** Mary Frances Purcell, Pat Wehmeir, Barbara Gieber, Joyce Lane, Lois Pearson, Mrs. Roberta Reimer.

The Choir is one of the most active organizations at Junior College. It is composed of students interested in any musical field. If there's talent, the sponsor of the Choir, Mrs. Roberta Reimer will help you develop it. Individually and as a group the Choir appears on convocations and takes an active part in the Christmas and Easter programs of the school.

pep band

The Pep Band meets regularly to practice for convocations and before-game entertainment during the basketball season. Under the direction of Mrs. Roberta Reimer, the sponsor, and the student director, Richard Miller, the band has grown. Their qualifications are quite simple: you must play a musical instrument.



Accompanist: Susie Kerns, Linda Gardner, Sharon Schneider.



Left to Right: George Lutz, Milton Stark, Howard Flint, Tom Obersteadt, Paul Jennings, Bill Schneider, Kermit Boyer, and Richard Miller.

melody mill



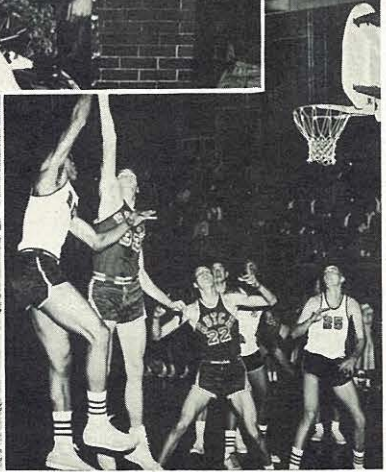
- (1) Dance and sway at Melody Mill.
- (2) Valentine Queen, Susie Nash, and her attendants, Carol Glancy and Nancy Ritchie.
- (3) Halloween Queen, Barbara Hoffman, and the King, Fred Coder.

- (4) At the old gambling hole!
- (5) Did that man take your picture?
- (6) One for you and one for me.
- (7) Now, let's see, which one shall we play.



All work and no play makes John a dull boy, goes the proverbial saying. So here is the action!

basketball homecoming



- (1) Queen Joann and her court.
- (2) Yea! Team!
- (3) Strategy man, strategy.
- (4) Behold, the Queen.

- (5) S-t-r-e-t-c-h that arm!
- (6) At the bonfire before the game.
- (7) A float fit for royalty.

basketball queen



queen . . .
JOANN HUMMEL



maid of honor . . .
JUDY WALTON



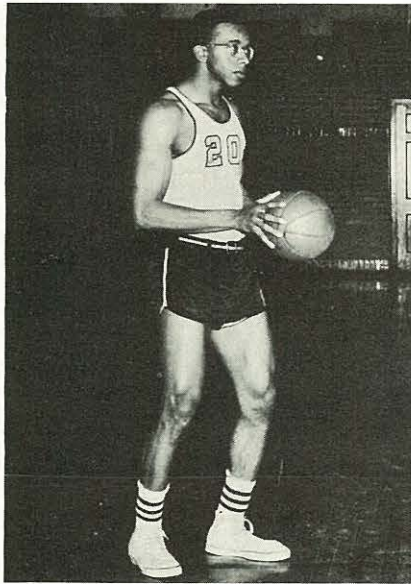
attendant . . .
NANCY RITCHIE



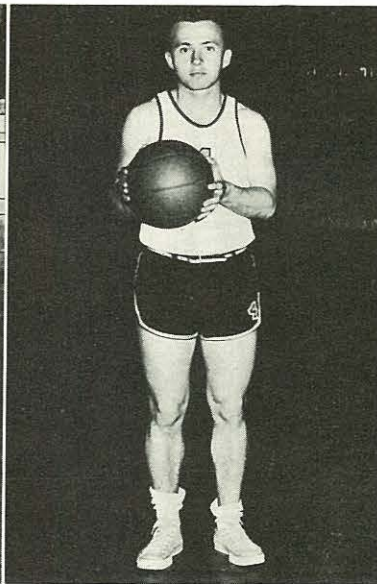
attendant . . .
CAROLE BRYANT



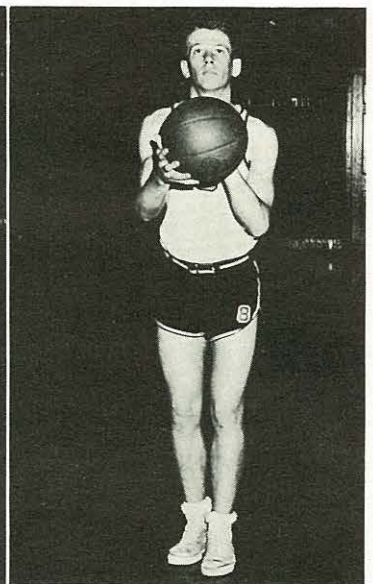
the crowning of the queen!



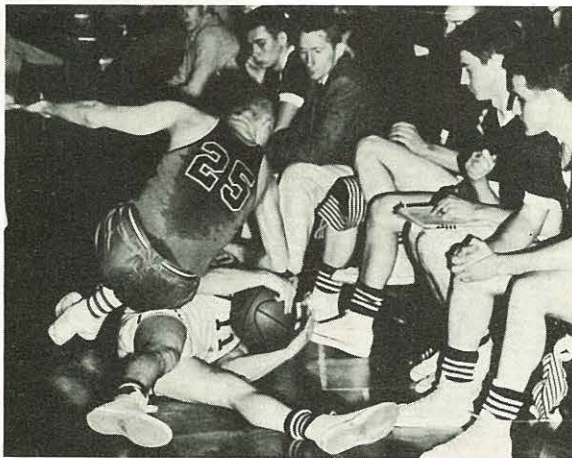
Clarence Bell



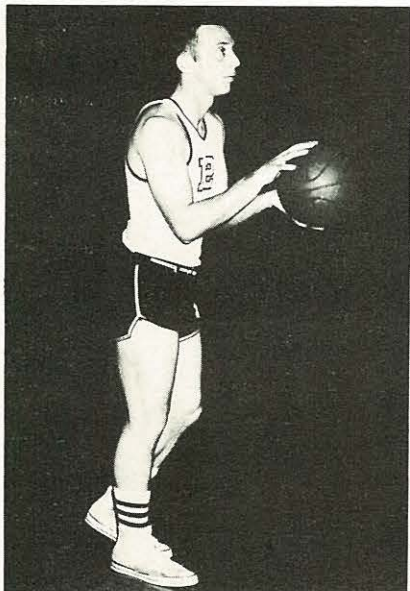
James Veselich



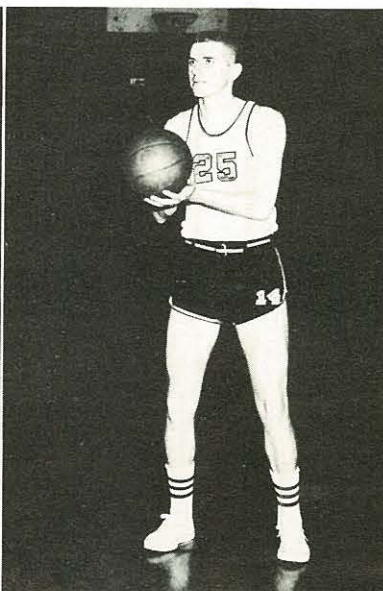
David Swyhart



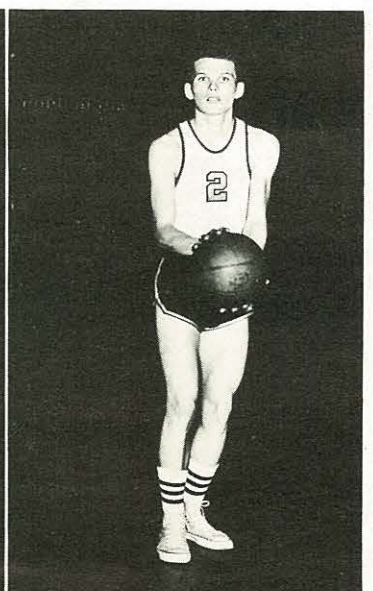
basketball



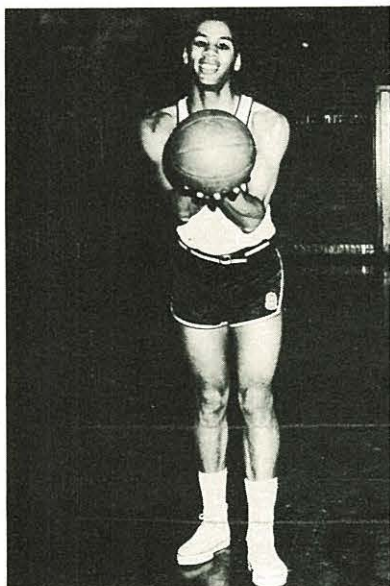
Karlton Nash



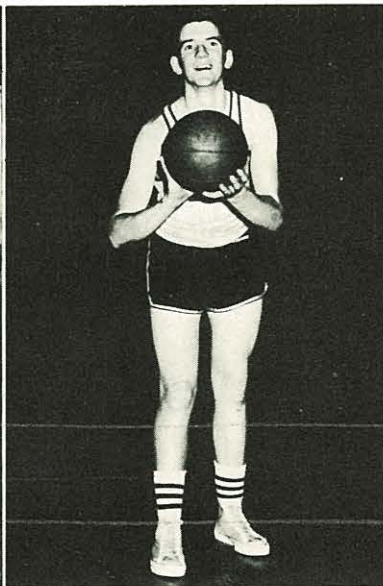
Don Vollintine



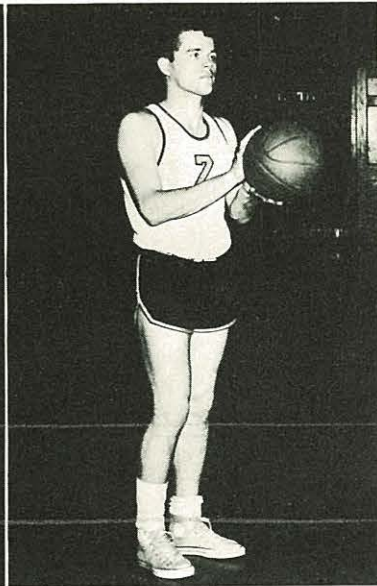
Buddy Sumpter



Don Meredith

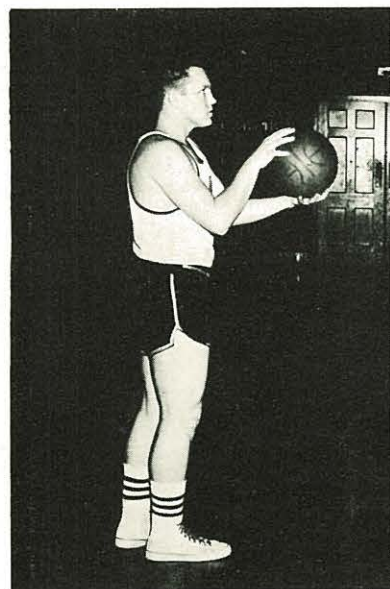
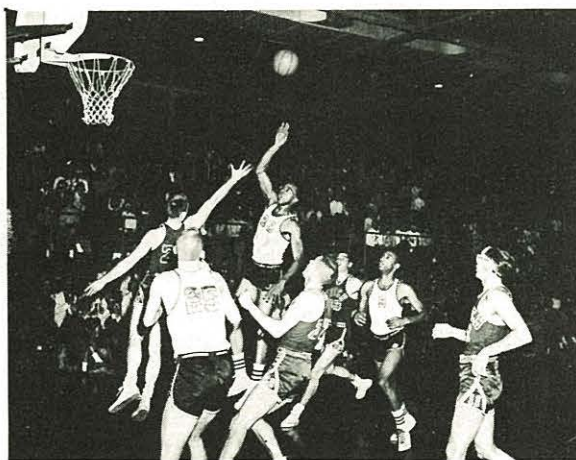


Dale Mears

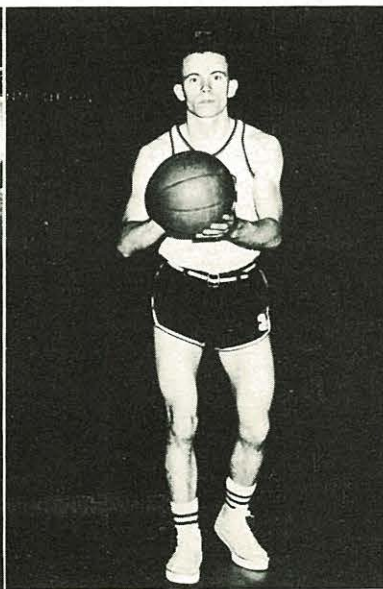


Richard Hellerich

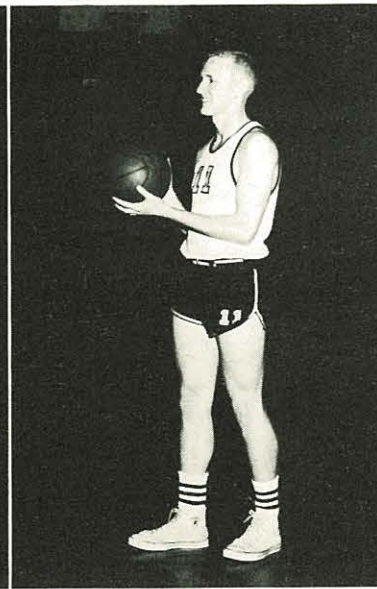
lettermen



Harold Colboch



Lawrence Poirier



Charles Hume

the basketball team



Standing: Jim Vesselich, Lawrence Poirier, Harold Colboch, Richard Hellerich, Buddy Sumpter, Karlton Nash, Dave Swyhart, Charles Hume, Dale Mears, Clarence Bell. **Kneeling:** Don Volintine, Edgar Haller, coach; Bob Alcorn, assistant coach; Don Meredith.



EDGAR HALLER
Coach

the statistics

SEASON RECORD

St. Joseph J. C.	70	St. Paul's College	54	November 23, 1957
" "	65	Hannibal-LaGrange	56	November 26, 1957
" "	77	Hutchinson J. C.	68	December 6, 1957
" "	55	Kansas City J. C.	79	December 10, 1957
" "	71	College of Ozarks	67	December 13, 1957
" "	65	Fullerton, Calif	67	December 17, 1957
" "	76	Hannibal-LaGrange	66	December 20, 1957
" "	54	Highland J. C.	64	December 30, 1957
" "	70	Trenton J. C.	44	January 3, 1958
" "	46	Benedictine Heights	66	January 4, 1958
" "		College of Tulsa, Okla.		
" "	72	Haskell Institute	52	January 7, 1958
" "	54	Kansas City J. C.	43	January 14, 1958
" "	72	Jefferson City J. C.	63	January 17, 1958
" "	61	Moberly J. C.	69	January 21, 1958
" "	72	Hutchinson J. C.	94	January 24, 1958
" "	64	Jefferson City J. C.	66	January 28, 1958
" "	76	Southern Baptist	86	January 30, 1958
" "	95	Trenton J. C.	60	February 3, 1958
" "	72	Chanute J. C.	57	February 6, 1958
" "	64	Haskell Institute	57	February 7, 1958
" "	88	Trenton J. C.	29	February 13, 1958
" "	75	Moberly J. C.	97	February 18, 1958
" "	90	College of Ozarks	63	February 21, 1958
" "	85	Southwest Baptist	91	February 27, 1958
" "	53	Hannibal-LaGrange	60	March 10, 1958

women's athletic association



Back Row: Karol Elder, Betty Johnson, Judy Wildhagen, Ramona Kurtz. **Second Row:** Neva Lea Eastin, Sylvia

Thacker. **Front Row:** Joyce Barr, Gaile Jann.

The Women's Athletic Association, which meets every Tuesday night is directed by Miss Clara Albrecht. The sports are basketball and volleyball. The basketball team had a very successful season with no losses. Phyllis Atkins is the President.

Please don't stare. This is only the Girls' Basketball Team, also sponsored by Miss Clara Albrecht. The team was organized on November fifth and has been quite active this year. Phyllis Atkins was elected Captain and found that sports for girls at J. C. is a fine way to spend an extra hour.



SYLVIA THACKER
Ping-Pong Champion

girls' basketball team



Joyce Barr, Karol Elder, Neva Lea Eastin, Ramona

Kurtz, Phyllis Atkins, Gaile Jann.

the pep squad



SOPHOMORE PEP SQUAD

Back Row: Karol Elder, Betty Johnson, Nancy Sue Morehead, Judy Dake, president; Jane Agee. **Third Row:** Helen Johnstone, Joann Hummel, Pat Corbin, Helen

Dischner. **Second Row:** Sharon Conley, Nancy Ritchie, Frances Purcell, Lyla Lee Pollard. **Front Row:** Mary Jane Stewart, Shirley Sneed, Sharone Bezona.



The Junior College Pep Squad consists of forty girls from the freshman and sophomore classes. The squad was organized for the first time this year and the freshmen purchased new uniforms of black skirts and sweaters and white blazer jackets with the gold J. C. emblem on the pocket. In addition to spurring the Griffons to victory at the basketball games, the pep squad helps with the queen coronation, holds cake sales, and helps to organize pep assemblies.



FRESHMAN PEP SQUAD

Back Row: Ronda Wachter, Ann Moncrief, Carole Bryant, Judy Molloy, Linda Gardner, Ethel Pettijohn. **Third Row:** Nancy Gadler, Judy Mazur, Pat Kemmer,

Valeria Smith, Patty Bazan. **Second Row:** Kathy Hilt, Linda Hill, Carol Joy Freeman, secretary; Mary Vincent. **Front Row:** Edna Burnside, Marilyn Milbourne, Lucille Otte.

the cheerleaders



Back Row: Susie Nash, Sally Schmitt. **Center:** Judy Buster. **Front Row:** Sandra Jackson, Pat Wehmeir.

Naturally the Cheerleaders furnish the background necessary for that essential pep and school spirit at the J. C. games. The "J" Club is a combination of J. C. students participating in some type of sports presented at the school as an extra curricular activity. Club meetings do not exist. If you are a sportsman you automatically belong.



SUSAN NASH
Head Cheerleader

"J" club



Back Row: Mr. Clark, Roger Bradley, K. C. Boyle.
Third Row: Harold Colboch, Dick Hellerich, Dale Mears.
Second Row: Charles Hume, Dave Swyhart, Jim Veslich,

Lawrence Poirier, Karlton Nash. **Front Row:** Judy Buster, Pat Wehmeir, Sally Schmitt, Sandra Jackson, Susan Nash.





"The best things are accomplished in spare moments."
—James Bryce

"Iolanthe" by

Iolanthe is a comic opera which pokes fun at the British peerage. By showing their laws in contrast with the laws of the fairies. The story revolves around Iolanthe, a fairy, who has been banished because she had married a mortal. The other fairies who found Iolanthe the life of the party, persuaded the Queen of the Fairies to let her return to their clan. The situation is further involved by the fact that Iolanthe has a son who is in love with Phyllis, a ward of the court, who is very much admired by all the peers.



"IN AN ATMOSPHERE OF PINK TREES."

The entire cast of Iolanthe stands at attention. To the left of the stage are the fairies; on the front row center is the queen, the queen of the fairies, the prince, the king, and the maiden fair. To the right of the stage are the peers. In the foreground is the orchestra under the direction of Mrs. Roberta Reimer.



MRS. ROBERTA REIMER
Director

"WE ARE THE PEERS."

Maurice Shier, Ben Crowley, Eargest Campbell, Dean Miller, Kermit Boyer, Frank Adams, Tom Swoboda, Richard Miller, George Lutz, Jerry Hopper, Roger Kramer.



"THE QUEEN SERENADES THE FAIRIES."

Back Row: Judy Wildhagen, Maudie Chivington, Judy Dake. Front Row: Pat Boyer, Lois Pearson, Rita Rowland, Lois Holzhauser, Diane Douglas, Pat Corbin, Jane Agee.

gilbert and sullivan

Finally the situation becomes complicated when four suitors find legal ways to marry Phyllis. And the logical suitor has lost favor when he was seen talking to his young and beautiful mother. As always, Gilbert and Sullivan solve the problem to everyone's satisfaction.



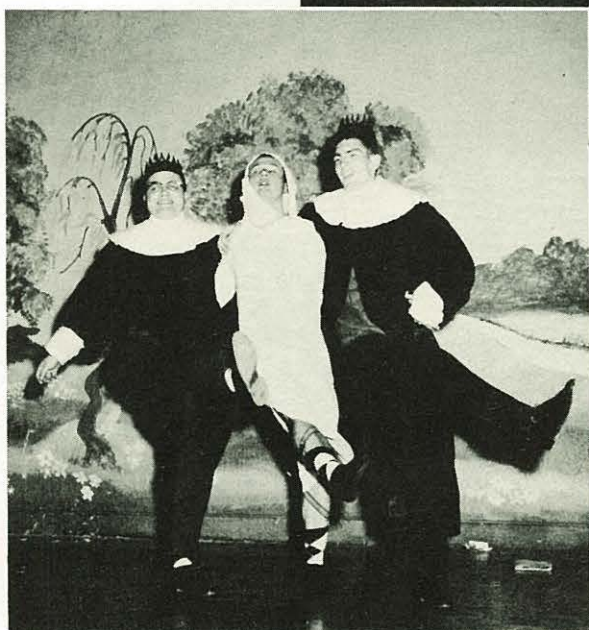
"AND SO SAD WAS SHE"

Queen Lois Holzhauser stands before the fairies; Lois Pearson, Judy Dake, Rita Rowland, Diane Douglas, Jane Agee, and Pat Corbin.



"THE FAIRIES TRIP GAILY ALONG."

Participating in the dance are Diane Douglas, Pat Corbin, Jane Agee, Judy Wildhagen, Maudie Chivington, Judy Dake, Pat Boyer, and Lois Pearson.



"THE BEWIGGED KING DANCES IN HIS NIGHT-SHIRT."

That is the way you do it, Maurice Shier, King Frank Adams, and Roger Kramer.

"I LOVE YOU MY FAIR MAIDEN."

Richard Borngesser is not teasing as he sings to the smiling young eligible, Mary Frances Purcell.



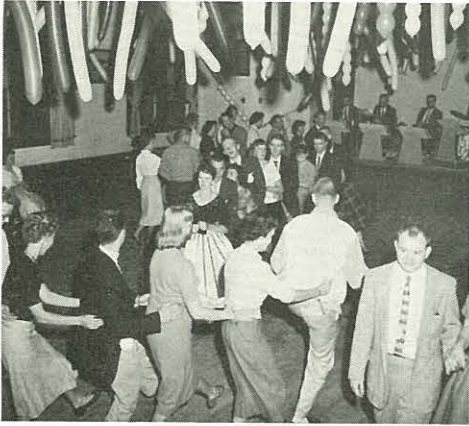
icebreaker dance



Amidst balloons, name cards are being made for Norman Taylor and his date by Barbara Ball and Shirley Sneed, as Junior College students gather to break the ice.



And so they danced, and danced, and danced.



The bunny-hop begins. That's the way Jim, Carol, and Diane!



The Dutch Holland Band sets the musical mood.



Ah, ah, ah . . . the student body President, Bob Ball, croons a bit.



The penguin says, "It must be a cool song by Rita Rowland."



No, "it's mine," says Dick Stephens to Bob Ball and a listener, George Lutz.

"the twelve pound look"



The dignified lady, Susie Kerns, dramatically grants knighthood to Ronnie Atkins.



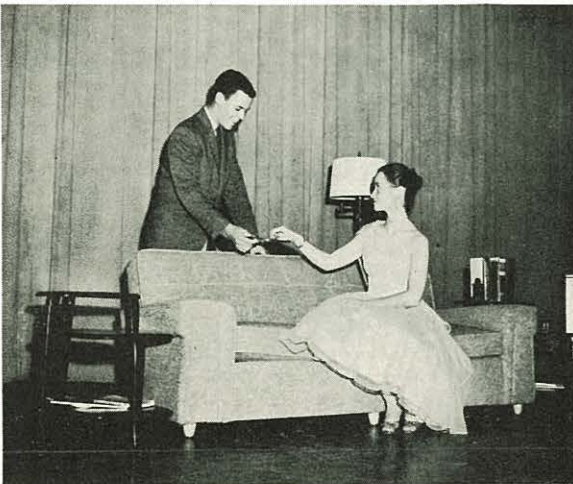
"Now, if you do it this way," states Dick Stephens, the student director of The Twelve Pound Look. Assisting him with her book is Linda Muir. The cast consists of Nancy Sue Morehead, Susie Kerns, Jim Patten, and Ronnie Atkins.



The ideal secretary arrives for work. Present are Jim Patten, Nancy Sue Morehead, and Susie Kerns.



Fascinated by the work of the secretary is Susie Kerns, as Nancy Sue Morehead types a letter.



"At your service, Madame," says Jim Patten, casually. Naturally, Susie Kerns is intensely interested.



... and thus the letter reads, Sir." Ronnie Atkins listens carefully as Nancy Sue Morehead reads it to him."



"The Musicians"

Bob Gould, Sharon Schneider, Linda Hill.



"Here Already Sergies"

Dick Stephens, Roger Thompson, Jerry Hopper, Linda Gardner.



"I Beg Your Pardon, Ladies"

Joann Hummel, Linda Gardner, Jim Patten.

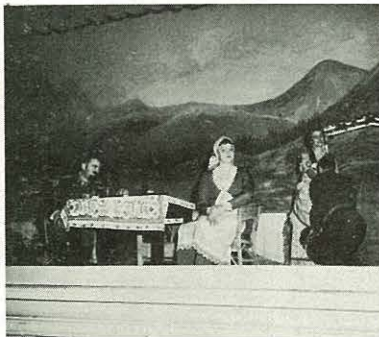


"Chocolate Creams! My Favorite."

Roger Kramer, Joann Hummel.

"arm's and the man"

—the annual play at junior college under the direction of Miss Louise Lacy.



"She Always Appears At Just The Right Time."

Roger Thompson, Linda Gardner, Joann Hummel, Dick Stephens.



"Where Did You Find The Major's Coat, Nichola?"

Roger Thompson, Jerry Hopper, Linda Gardner, Joann Hummel, Dick Stephens, Roger Kramer.



"Finale"

Roger Thompson, Linda Gardner, Joann Hummel, Roger Kramer, Susie Kerns, Dick Stephens, Miss Lacy, Jim Patten.



"Down Our Way"

Buddy Taylor, Dick Miller, Dick Stephens, Harry Crowell.



"Charleston, Charleston"

Jane Agee, Carol Glancy, Carol Moore, Mary Jane Stewart.



"The Unemployed"

Rita Roland, Frances Purcell, Carol Glancy, Jerry Hopper.

"crime does not pay well"

—the production of footlights under the direction of Mike Vaughn and Nancy Sue Morehead.



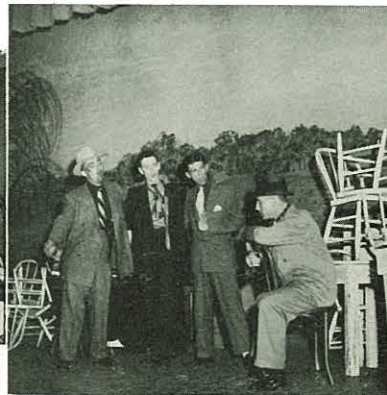
"Some People Here Are Very Conspicuous"

Don Garrett, "Big Louie"—Kermit Boyer, Tom Judah, Richard Borngesser, Bill Roumas, Larry Englehart.



"Anything Goes"

Don Garrett, Kermit Boyer, Tom Judah, Richard Borngesser, Ronda Wachter, Ken Strawn, Francie Purcell, Carol Freeman, Lois Holzhauser, Jerry Hopper, Valerie Smith, Lawrence Poirier, Carol Bryant, Bob Ball, K. C. Boyle, Rita Rowland, Paul Livingston, Linda Gardner, Roger Drake.



"A Smile Will Go a Long Long Way"

Don Garrett, Richard Borngesser, Tom Judah, Kermit Boyer.



"It Was a Success"

K. C. Boyle, Don Garrett, Richard Borngesser, Carole Bryant, Tom Judah, Mike Vaughn, Nancy Sue Morehead, Bob Ball, Rita Rowland, Jane Agee, Carol Moore, Mary Jane Stewart.

science kermis



Did you say travel?



Read a good book.



Progress in a test tube.



An experiment?



I just don't understand it.



Looks comfortable.

