

## Foreword . . .

The "Gay Nineties" meant livery stable rigs, tintype portraits, and rows of private shaving mugs in the barber shops. It meant balloon sleeves and bustles, the can-can, and handle-bar mustaches.

More to the point, it meant **no** penicillin, **no** atomic energy, **no** television, **no** education for the masses. It stood for few opportunities for women to develop their talents, very slow means of communication and transportation. It was a colorful period, but who would prefer it to the exciting, progressive world of the present?

Today's world means a high standard of living and education for great numbers of people, improvements in labor-management relations, significant advances in the field of medicine. It stands for a United Nations working toward world peace in a world that seems quite small since the vast improvements in communication and transportation.

Why the difference? The answer is education. Behind all the improvements and advancements which are made and have been made since the "Gay Nineties" have been educated persons using the wisdom they have acquired through study and research. More and more we see the need for "higher education" and we are grateful for the existence of St. Joseph Junior College which signifies one more plateau in our growth in wisdom. As we grow in wisdom, may we not only value wisdom gained, but apply it, that we may help those generations to follow.



This yearbook may contain images, language, or other content that could be offensive to modern users. The content may be disturbing and offensive, but should be viewed within the context of that period. The material is being presented as part of a historical record and in no way reflects the values of Missouri Western State University.

# Dedication

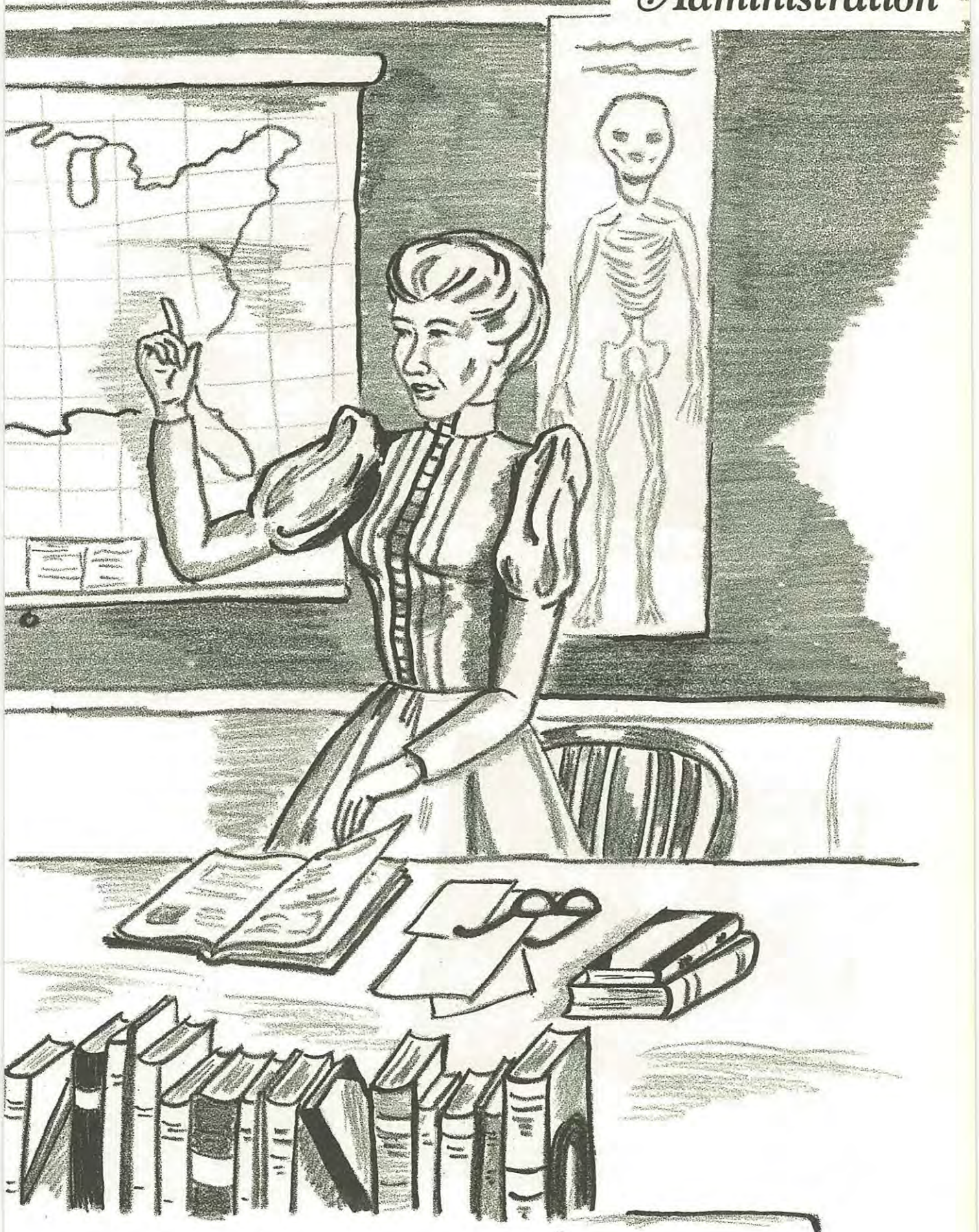


We, the students of St. Joseph Junior College, humbly dedicate our 1957 Griffon Yearbook to Miss Nelle Blum, our Dean. We do not attempt to enumerate the advancements at our college during Dean Blum's administration; neither do we attempt to tell of the personal guidance afforded by her through the years, nor could we know all that she does and has done for the students of Junior College, for she is a quietly efficient and modest individual. Therefore, we merely state that we are dedicating this 1957 yearbook out of a sincere gratitude to one whom we hold in high esteem, our Dean, Nelle Blum.



# Table of Contents

	Page
Title Page .....	1
Foreword .....	2
Dedication .....	3
Administration .....	5
Board of Education .....	6
Administration .....	7
Faculty .....	8
Student Body Officers.....	11
Senate and Cabinet .....	12
Students .....	13
Sophomore Class Officers.....	14
Sophomore Class .....	15
High Ranking Sophomores .....	24
Freshman Class Officers .....	25
Freshmen .....	26
Glimpses .....	32
Honor Societies .....	33
Phi Theta Kappa .....	34
Delta Psi Omega .....	35
Mace .....	36
Organizations .....	37
Spanish Club .....	38
French Club .....	38
German Club .....	39
Science Club .....	39
Griffon Yearbook .....	40
Griffon News .....	41
Engineers' Club .....	42
Psychology Club .....	42
Dramatic Workshop .....	43
Art Club .....	43
Newman Club .....	44
Nurses .....	44
Choir .....	45
Madrigal Singers .....	45
Girls' Ensemble .....	45
Melody Mill Dances.....	46
Activities .....	47
"Our Town" .....	48
Icebreaker .....	50
"Sparkin' " .....	51
"Double Cross" .....	52
Science Kermis .....	54
Sports .....	55
Basketball Queen and Attendants.....	56
Homecoming .....	57
Junior College Tournament.....	58
Basketball Team .....	59
Basketball Lettermen .....	60
Cheerleaders .....	62
Pep Squad .....	63
"J" Club .....	63
Women's Athletic Association .....	64
Basketball Team .....	64



# Board of Education



Left to right: Mr. G. L. Blackwell, Mr. Alva Lindsay, Mr. R. V. Blomfield, Mr. W. Fairleigh Enright, Mr. Dwight L. Dannen, Mr. David Hopkins, Mr. E. F. Garvey, Mrs. Paul Knepper.



Mr. G. L. Blackwell, Superintendent of Schools; Mr. C. M. Coleman, Assistant Superintendent in Charge of Instruction; Mr. R. V. Blomfield, Assistant Superintendent in Charge of Finances.

Although it is not essential that the St. Joseph Board of Education maintain a junior college, it has seen fit to do so since 1915 when St. Joseph Junior College was first established. Here in this institution, many young people of this community have been able to attain an education on a college level. We of Junior College take this opportunity to express our gratitude to the Board of Education, Mr. Blackwell, Mr. Coleman, and Mr. Blomfield for the opportunity of attending St. Joseph Junior College and for the fine work they are doing in educating young people to become better citizens and leaders of tomorrow.

# Administration



**DEAN NELLE BLUM**

Junior College is indeed privileged to have a Dean such as Nelle Blum. For years she has lent her time and aid in counseling and guiding the students. This wise counseling has set many students on the right path toward their goal. Dean Blum is also always ready to help any student with a personal problem. We, the students, express our gratitude to her and feel that Nelle Blum is rightfully deserving of the title, Dean of St. Joseph Junior College.

**EDGAR C. LITTLE**

One of the most deserving of the respect paid him by Junior College students is Mr. Little, dean of men. In addition to his fine counseling, he has proved himself an efficient chemistry teacher and an able sponsor for the Engineers' Club. Mr. Little this year also assumed the responsibility of Chairman of the Attendance Committee, a project which has proved very successful.



# Faculty



## CLARA L. ALBRECHT

Subjects: French, German, Physical Education.  
 Colleges: University of Missouri, University of Southern California, Middlebury Language School, Rocky Mountain School of Languages.  
 Degrees: B.S. in Education, M.A.  
 Activities: French Club, German Club, W.A.A.

## ORREL M. ANDREWS

Subject: Biology.  
 Colleges: Wichita University, Kansas University, University of Washington.  
 Degrees: A.B., A.M.  
 Activities: Natural Science Club.  
 Hobbies: Dolls, Art, Stamps, Photography.

## BYRON K. BAKER

Subject: Athletic Director, Coach.  
 Colleges: Colorado State, Northwest Missouri State College, University of Arkansas.  
 Degrees: B.S., M.S.

## W. D. BRACKEN

Subject: Physics.  
 Colleges: Yale, Baylor, University of Chicago, University of Iowa, University of Missouri.  
 Degrees: A.B., A.M., LL.B.

## HELEN B. BROWN

Subject: Spanish.  
 Colleges: University of New Mexico, University of Wisconsin, National University of Mexico, Middlebury Language School.  
 Degrees: B.A., M.A.  
 Activities: Spanish Club.

## DENA CLARK

Subject: Librarian.  
 Colleges: Northwest Missouri State College, George Peabody College for Teachers.  
 Degrees: B.S. in Education, B.S. in Library Science.

## INA CULVER

Subject: Art.  
 Colleges: University of Missouri, Colorado State College of Education.  
 Degree: B.S., M.A.  
 Activities: Art Club, Stage Design.

## MARIAN HARVEY

Subjects: Social Sciences, Sociology.  
 Colleges: Northwestern University, University of Chicago, University of Wisconsin.  
 Degrees: A.B., A.M.  
 Activities: Phi Theta Kappa Sponsor.  
 Hobbies: Reading, Gardening.



# Faculty



## LOUISE CHURCHILL LACY

Subject: English.  
 Colleges: St. Joseph Junior College, University of Missouri, University of Colorado, University of Iowa.  
 Degrees: B.A., M.A.  
 Activities: Dramatics, Delta Psi Omega Sponsor.

## ROLAND L. LANSER

Subjects: Economics, History.  
 Colleges: University of Missouri, University of Kansas.  
 Degrees: M.A., B.S.  
 Hobbies: Gardening, Church, Young People's Work.

## MURIEL M. LOMAX

Subject: Health Education.  
 Colleges: New York University, University of Kansas City.  
 Degrees: B.S., M.A.  
 Activities: Director of Health and Physical Education, School District of St. Joseph.  
 Hobbies: Travel, Fishing, Photography, Reading.

## GLENN E. MARION

Subject: Pre-Engineering.  
 Colleges: Maryville State, Colorado State, Oregon State, Rolla School of Mines.  
 Degrees: B.S., M.S.  
 Activities: Engineers' Club, Stage Construction.  
 Hobbies: Gardening, Crafts.

## CARL NURSKI

Subject: Psychology.  
 Colleges: Northwest Missouri State College, University of Missouri.  
 Degrees: B.S., M.S.  
 Activities: Counseling and Guidance Work.  
 Hobbies: Music, Hunting and Fishing, Woodworking, Gardening.

## KARAMANEH OSCHWALD

Subject: Chemistry.  
 Colleges: University of Kansas, Vanderbilt University, Peabody College for Teachers.  
 Degrees: B.A., M.A.  
 Activities: Dramatics Workshop.  
 Hobbies: Sketching, Reading.

## ELIZABETH PHELAN

Subject: American History, Algebra.  
 Colleges: Junior College, St. Mary College, Creighton University.  
 Degrees: A.S., B.S., M.S.  
 Hobby: Travel.

## FRANK S. POPPLEWELL

Subject: American History, Government.  
 Colleges: Kansas State College, Pittsburgh, University of Missouri.  
 Degrees: B.S., M.S., M.A.

# Faculty



**ROBERTA S. RIEMER**

Subject: Music.  
 Colleges: Park College, Chicago Musical College,  
 Missouri State Teachers, Colorado University, Co-  
 lumbia University, Northwestern University.  
 Degrees: A.B., M.M.  
 Activity: Choir.  
 Hobby: Chamber Music.

**RICHARD B. TAYLOR**

Subject: English.  
 Colleges: Northeast Missouri State College, Uni-  
 versity of Missouri.  
 Degrees: B.S., B.J., M.A.  
 Activity: Griffon News.  
 Hobbies: Reading, Fishing.

**MARY F. ROBINSON**

Subject: Psychology.  
 Colleges: University of Michigan, Washington Uni-  
 versity, University of Chicago.  
 Degrees: A.B., M.A., Ph.D.  
 Activity: Research.  
 Hobbies: Reading, Cats.

**LILLIAN R. WATKINS**

Subject: Mathematics.  
 Colleges: St. Joseph Junior College, University of  
 Chicago, University of Missouri, University of  
 Michigan, Columbia University, Northwestern Uni-  
 versity.  
 Degrees: Ph.B., A.M. in Spanish, A.M. in Math.  
 Hobby: Driving a car.

**LOIS JANE ROPER**

Subjects: Mathematics, Physics.  
 Colleges: Northwest Missouri State College, Uni-  
 versity of Missouri.  
 Degrees: B.S., A.M.

**JOHN R. YANCEY**

Subject: Microbiology.  
 Colleges: Central Missouri State College, Uni-  
 versity of Kansas City, University of Colorado, Uni-  
 versity of Missouri.  
 Degrees: B.S., M.A.  
 Hobbies: Fishing, Gardening.

**CELIA F. SUTHERLAND**

Subject: Education.  
 Colleges: St. Joseph Junior College, Northwest Mis-  
 souri State College, University of Kansas City.  
 Degrees: A.E., B.S., M.A.

**RADIANCE ZOLLINGER**

Subjects: Registrar, Treasurer.  
 College: St. Joseph Junior College.  
 Degree: Junior College Certificate.

# Student Body Officers



**JOHN BEIHL**  
President



**LARRY GREGORY**  
Vice-President



**JEAN McINTOSH**  
Secretary-Treasurer

The student body officers chosen for their ability to plan and lead the student body have capably executed these duties during their year in office. By faithfully carrying out the school business and

social affairs, they have fulfilled the trust which was placed in them when they were elected by the student body.

# Senate and Cabinet

## FIRST SEMESTER SENATE



**Back Row:** Don Brown, Roger Kramer, Jean McIntosh. **Second Row:** Fred Gee, Beverly Johnson, Bob Ball, Larry Gregory, Donna Godman, Helen

Bush. **Front Row:** Glenda Nichols, Gary Phillips, Nancy Sue Morehead, John Beihl, Louanne Robreau.

## CABINET



**Left to right:** John Beihl, Louanne Robreau, Page Buckey, and Helen Bush.

Senate, which is J. C.'s student-governing assembly, is composed of the student body officers, members of the Cabinet, the two class presidents and nine senators elected by the sophomores and six by the freshmen. The Senate holds weekly meetings at which the student body president presides. It is by this body of students that activities are planned, committees appointed, and students' wishes made known to the administration.

## SECOND SEMESTER SENATE



**Back Row:** Gary Phillips, Jim Patten, Don Brown, Nancy Sue Morehead, Mary Frances Purcell, Susan Nash. **Second Row:** Glenda Nichols, Donna Holmes, Helen Bush, Donna Godman, Mary Jane Stewart.

**Front Row:** Beverly Johnson, Page Buckey, John Beihl, Jean McIntosh, Larry Gregory, Louanne Robreau.

# Students





"Posing for a picture" are the sophomore class officers Gary Phillips, president; Louanne Robreau, vice-president; and Joann Fleek, secretary-treasurer.

## *Sophomore Class Officers*

These students have served well as spokesmen for J. C.'s upper-classmen this year of 1956-57, presenting the complaints, suggestions and wishes of their fellow classmen to the student body president, the dean or to the Senate. They supervise the purchasing of some token of gratitude to be left to the college by the Sophomore Class. The president is automatically a member of Senate, the student-governing assembly.

**EUGENE ELLSWORTH ADAMS**

Engineers' Club, Psychology Club.



**ANITA L. ALLEN, A. E.**

Committees, "Footlights," Pep Squad, President of Psychology Club, Strategy Board.



**DONALD BACHALI**

**J. C. Certificate**

Engineers' Club, Newman Club.

**GARNET RAE BARKUS, A. E.**

Committees, Convocations, "Footlights," W.A.A., Pep Squad, Science Club, Yearbook Staff, Strategy Board, Psychology Club.

**BARBARA LOUISE BARTH, A. E.**

Committees, Pep Squad.



**JOHN PHILLIP BEIHL, A. A.**

Committees, Convocations, Dramatics Workshop, "Footlights," Mace, Phi Theta Kappa, Delegate to Phi Theta Kappa National Convention, President of Student Body, Senate, Yearbook Staff, Spanish Club, Pep Band, Delta Psi Omega, All School Play, Business Manager of Griffon News.



**CONRAD NOEL BENSYL, A. S.**

Committees, Convocations, "Footlights," German Club, Track, All School Play, Operetta, Pep Band.

**GARY BRINTON, A. S.**

**ROBERT ALLEN BROWN**

Pep Master, Committees, Convocations, "Footlights," Melody Mill Committee, Operetta.



**PAGE BUCKEY, A. A.**

Mace, Phi Theta Kappa, Griffon News Editor, All School Plays, Cabinet, President of Delta Psi Omega, Committees, Convocations, Yearbook Staff, French Club, Psychology Club, Co-director of "Footlights" stage direction.



**HELEN BUSH, A. E.**

Basketball Queen Attendant, Committees, Convocations, "Footlights," Mace, Pep Squad, Science Club, Senate, Cabinet, Melody Mill Committee.

**FRANK WOOD CLARK**

Engineers' Club, Science Club, Track.

**FREDERICK VERN CODER**  
Engineers' Club, Psychology Club.

**DAVID CONKLING**



**JEANETTE CONNELL, A. S.**

Newman Club, Pep Squad, Science Club, Operetta, Psychology Club, Choir.

**RONALD COOK, A. S.**

**ROBERT CRAWFORD**

Science Club.

**MRS. JOHN CREAL, A. E.**



**SANDRA JEANE DAWSON**

**J. C. Certificate**

Art Club, French Club, W.A.A., Pep Squad, Phi Theta Kappa, Yearbook Staff, Griffon News Staff.

**ELAINE DONOVAN, A. E.**

Committees, W.A.A., Pep Squad.



**JAMES PAUL DROWNS, A. A.**

Art Club, Committees, Convocations, Dramatics Workshop, "Footlights," French Club, Science Club, All School Play, Christmas Play, Delta Psi Omega, Psychology Club.

**DIXIE DUNLAP, A. E.**

Committees, "Footlights," Pep Squad, Phi Theta Kappa, Science Club, Psychology Club.



**CHARLES ECKART**

J. C. Certificate

**JOHN ELLIOTT, A. S.**

**CHARLES R. FELLING, A. A.**

French Club, Phi Theta Kappa.

**HELEN JOANNE FLEEK, A. E.**

Basketball Queen Attendant, Pep Squad, Psychology Club, Secretary of Sophomore Class.



**JACK FREDRICKSON**

Spanish Club.

**HARVEY FRY**

**RONALD FULLER, A. A.**

Spanish Club.

**MARY DONNA GANNAWAY**





**FRED GEE**

**J. C. Certificate**

Committees, Phi Theta Kappa, Senate, All School Play.

**JOELLA M. GIDDENS, A. E.**

Pep Squad, Psychology Club.

**CONAN TERRY GRACE**

Science Club, Psychology Club.

**LARRY FRANK GREGORY, A. S.**

Convocations, "Footlights," German Club, Science Club, Vice-President of Student Body, Senate, Track, Operetta, Choir, Madrigal Group.



**JANE HALL**

**J. C. Certificate**

Committees, Convocations, Dramatics Workshop, "Footlights," French Club, Pep Squad, Phi Theta Kappa, Choir Accompanist, Psychology Club, Operetta, All School Play.

**JOHN W. HALL, A. S.**

Basketball Letterman, President of German Club, President of Science Club, Intramural Sports, Griffon News Staff, Track, Baseball.



**NORMAN HALPAIN**

Engineers' Club, Phi Theta Kappa.

**BOB HAUTZENROEDER, A. S.**

"Footlights," Phi Theta Kappa, President of Spanish Club.



**HAROLD W. HAWMAN**

**J. C. Certificate**

**STEPHEN HAYES, A. A.**

Newman Club, Phi Theta Kappa, Spanish Club, Griffon News Staff.



**RICHARD HICKS, A. S.**  
Engineers' Club, Phi Theta Kappa.

**ROSEMARY HOGGATT, A. S.**  
Science Club.



**DONNA MAY HOLMES, A. A.**

Basketball Queen Attendant, Committees, Convocations, "Footlights," Pep Squad, Senate, President of French Club, Science Kermis, Strategy Board, Attendant to Melody Mill Sweetheart, Melody Mill Sweetheart, Melody Mill Committee, Operetta, Choir.

**GORDON E. HOPKINS**

**J. C. Certificate**

Committees, Dramatics Club, "Footlights," All School Plays, Operetta.

**MARY ALTA HOPKINS**

**J. C. Certificate**

Convocations, "Footlights," French Club, Pep Squad, Phi Theta Kappa, Griffon News Staff, Operetta, Psychology Club, Choir.

**CHARLENE IVEY, A. S.**

Committees, Dramatics Club, "Footlights," Pep Squad, Science Club, Melody Mill Committee, Science Kermis, Griffon News Staff, Halloween Queen of Melody Mill.



**MILDRED JENNINGS, A. S.**

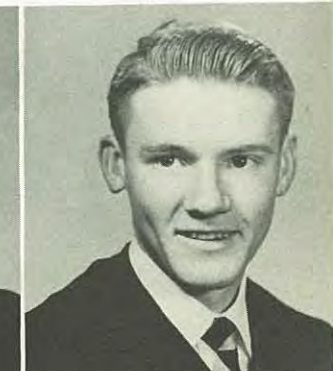
**BEVERLY JEAN JOHNSON, A. A.**

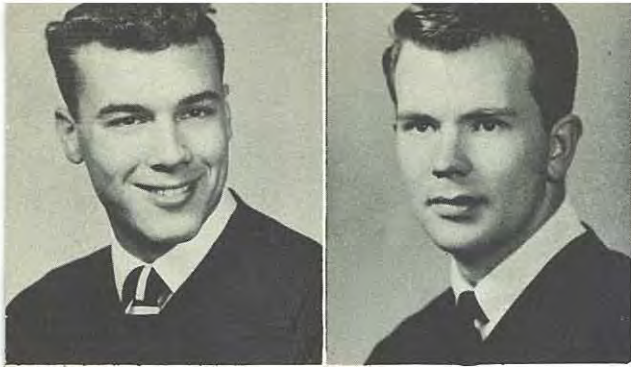
Basketball Queen, Committees, Convocations, "Footlights," French Club, W.A.A., Mace, Pep Squad, Phi Theta Kappa, Senate, Yearbook Staff, Page Editor of Griffon News, Operetta, President of Phi Theta Kappa, Choir, Melody Mill Sweetheart.

Pep Band.

**JIMMY JONES**

**BYRON KAGAY, A. S.**  
Basketball Letterman, Convocations, Phi Theta Kappa, Intramural Sports.





**CARYL MYER KURZ, A. S.**

Engineers' Club, "Footlights," Phi Theta Kappa.

**DARRELL EUGENE LILE, A. S.**

Delta Psi Omega, Yearbook Staff, Dramatics Workshop, Engineers' Club, "Footlights," Committees, Strategy Board, All School Play.

**ADOLPH LUSTENBERGER, A. S.**  
Engineers' Club, "Footlights," Phi Theta Kappa.

**SANDRA McADOW**



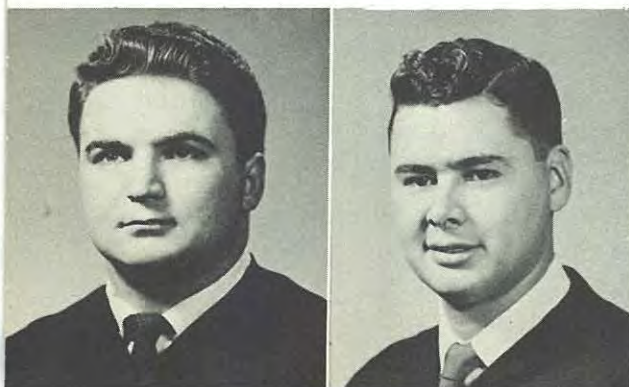
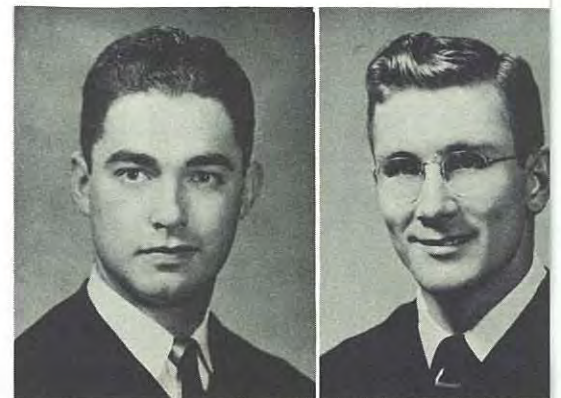
**JEAN McINTOSH, A. S.**

Basketball Queen Attendant, Cheerleader, Convocations, Dramatics Workshop, W.A.A., German Club, Mace, Phi Theta Kappa, Secretary-Treasurer of Student Body, Senate, Strategy Board, Psychology Club.

**MARY M. MAXWELL, A. E.**

**THOMAS MAXWELL**  
J. C. Certificate  
Basketball Manager, Spanish Club.

**WILLIAM D. MAXWELL**  
Engineers' Club.



**CHARLES F. MEINERT**

J. C. Certificate  
Science Club.

**BOB MEJIA, A. S.**

Basketball Letterman, Committees, Science Club, Intramural Sports.

**JANET MELVIN, A. E.**

Cheerleader, Committees, Convocations, W.A.A., Newman Club, Phi Theta Kappa, Yearbook Staff, Strategy Board.

**MARCEE MOLDAVER, A. E.**

Basketball Queen Attendant, Cheerleader, Committees, Convocations, Dramatics Workshop, W.A.A., Choir, "Footlights."



**ALENE MUELLER**

**I. C. Certificate**

Committees, Convocations, "Footlights," Mace, Pep Squad.

**THOMAS NERNEY, A. A.**

Newman Club.

**JON NEWMAN, A. S.**

Engineers' Club, Phi Theta Kappa.

**GLENDA KAY NICHOLS, A. E.**

Basketball Queen Attendant, Committees, Convocations, "Footlights," W.A.A., Senate, Sophomore Editor of Yearbook, Strategy Board, Cheerleader.



**GARY L. PHILLIPS, A. A.**

Committees, Convocations, Engineers' Club, French Club, Senate, Yearbook Staff, Psychology Club, Strategy Board, President of Sophomore Class.

**WILLIAM G. PITTHAN, A. S.**

Newman Club, Psychology Club.

**GERALD PRINDLE**

Dramatics Workshop, "Footlights," Spanish Club.

**PATRICIA ANN PRUETT, A. E.**





**CLARENCE RAINES, A. S.**

**ANNA EILEEN RITTMANN, A. E.**

Mace, Phi Theta Kappa, Delta Psi Omega, Yearbook Editor, Cheerleader, Dramatics Workshop, "Footlights," All School Plays, Choir, Operetta, Madrigal Group, Strategy Board, Committees, W.A.A., Convocations, Science Club, Psychology Club, "J" Club.

**LOUANNE MARGE ROBREAU, A. A.**

Committees, Convocations, "Footlights," W.A.A., Mace, President of Pep Squad, Phi Theta Kappa, Spanish Club, Vice-President of Sophomore Class, Cabinet, Dramatics Workshop.

**MARY JANE RODRIGUEZ, A. S.**

Newman Club, Pep Squad, Science Club, Griffon News Staff, Science Kermis.



**WANDA RUSSELL**

Pep Squad.

**ROBERT FRANKLIN SNELL, A. A.**

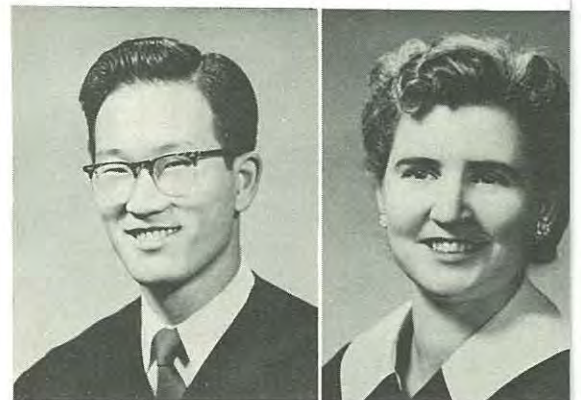
Spanish Club.

**YOUJIN TOKKO**

German Club, Choir.

**MRS. ROBERT E. TOLBERT**

Convocations, Accompanist.



**ROGER H. ULRICH**

J. C. Certificate.

**BARBARA MAE VETTER, A. A.**

Art Club, Committees, Convocations, "Footlights," W.A.A., Pep Squad, Phi Theta Kappa, Melody Mill Committee, Psychology Club, Dramatics Workshop, Spanish Club, Choir, Bowling Champion.

Engineers' Club.

**JERRY L. WALKER, A. S.**

**A. L. WEESE**



**E. LUCILLE WERTIN**

W.A.A., Newman Club, Pep Squad, Psychology Club.

**JAMES WHITE, A. S.**

**SANDRA SUE WHITE, A. A.**

Basketball Queen Attendant, Cheerleader, Dramatics Club, "Footlights," French Club, Operetta, Madrigal Group.

**COLLEEN L. WILEY**

Art Club, German Club, Phi Theta Kappa.



**CHANDRA CLARK WILSON, A. E.**

Co-editor of Griffon News.

**CURTIS GENE ZAHND, A. A.**

Convocations, Dramatics Workshop, "Footlights," Newman Club, Yearbook Staff, Delta Psi Omega, All School Play, Spanish Club, Psychology Club, Choir, Strategy Board.

## Sophomore - Camera Shy

John Armstrong  
Donald Berry  
Emery Bradley  
David Bridenstine  
Lawrence Chaldecott  
Kenneth Christgen  
Gary Coder  
Roger Cox  
Gregg Croner  
Ben Crowley  
Thomas Dawson  
Carl Edgar  
Peter Elo  
Thomas Fairlie  
Melvin Fulcher  
Albert Grable  
Richard Graham  
Robert Grant  
Carl Hamann

Ruth Ann Hansen  
Richard Harris  
Sidney Harris  
Bob Hubbard  
Nancy Johnson  
Howell Kemp  
Wilber Kline  
Martin Kunze  
Kay Laderoute  
Nadine Lebow  
Clarence Mabin  
H. D. Miller  
Barbara Moenning  
Don Morriss  
Gerald Myers  
Richard Nelson  
Marilyn Odson  
Robert Pettepier  
Fred Poland  
Jack Reddick

Lowell Roberts  
John Schraufek  
John Schultz  
Franklin Seever  
Don Silcott  
Helen Sloan  
Ronald Smith  
Mrs. Marion Stahlin  
Walter LeRoy Steele  
Norman Stickler  
Jerry Strong  
Larry Symes  
Bernard Tuck  
William Violett  
Bill Wachendorfer  
A. G. Waitkoss  
Roger Weitlich  
Carolyn Sue Whitfield  
Roger York

## Sophomore Honor Students



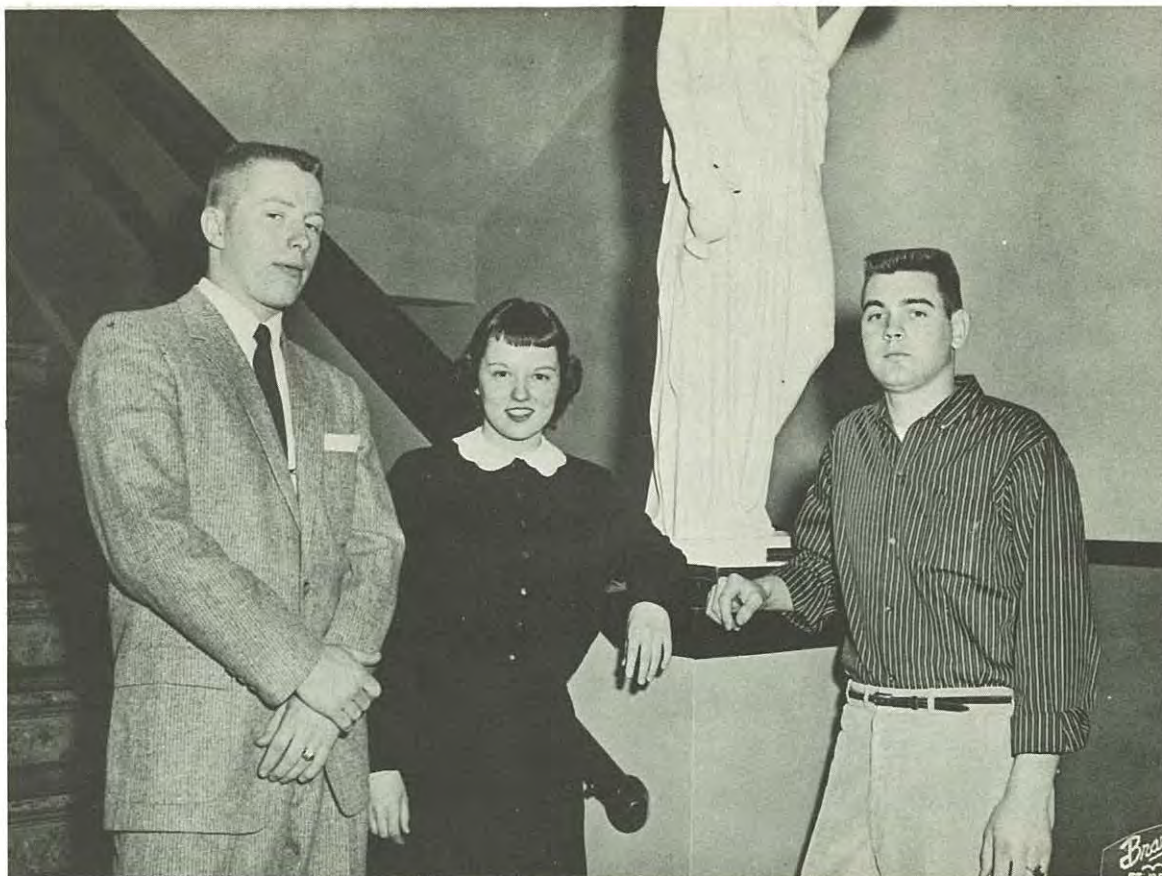
Beverly Johnson



Jon Newman

These two students have excelled scholastically while at Junior College and have the highest grade average in the Sophomore class. However, along with their scholastic achievements, they have also been active in various organizations. Beverly served as president of Phi Theta Kappa, was a Mace member and Basketball Queen. Jon was also a member of Phi Theta Kappa and program chairman of the Engineers' Club.





"Happy Days Are Here Again" for the freshmen class officers Ronnie Tiffany, secretray-treasurer; Mary Jane Stewart, vice-president; and Don Brown, president.

## *Freshmen Class Officers*

These students have ably served this year of 1956-57 as representatives for the Freshman Class at J. C. They have passed on the ideas presented to them by fellow classmen in order that the majority's wishes may be carried out. The president is automatically a member of Senate, the student-governing assembly.

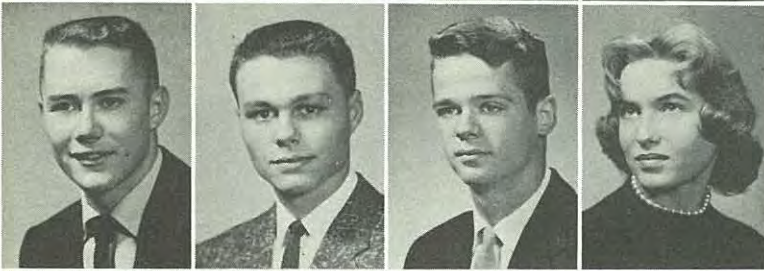


Jane Agee

Norma Jean Ahle

Marcia Akers

Carolyn Archdekin



Bob Ball

Edmund M. Bartel

Thomas Bauman

Sharon Sue Bezona



Patricia Billings

Larry Bonham

Gene Borowski

Claude Bradford

Roger Bradley

Sue Bridgford

Charlotte Brown

Donald C. Brown



Harold E. Callaway

Maudie Chivington

Melvin Clark

Sharon Conley



Rebecca Cook

Pat Corbin

James Courtney

Sherry Crockett



Bill Cunningham  
 Judy Dake  
 John L. Davis  
 Helen Dischner



Diane Douglas  
 Jeanne Douglas  
 Marian Douglas  
 Richard Duckworth



Karol Elder  
 Jan Ronald Elkins  
 Ruth Anne Eychaner  
 Janice Fankhauser



Edward Fattig  
 Kay Faulkner  
 John M. Feuerbacher  
 Paddy Fletcher

Margaret Giffin  
 Donna Godman  
 Donna Groh  
 Darlene Hahn

Darrel Hanson  
 Donna Mae Harvey  
 Rosemary Hausman  
 Marilyn Hees



Erma Helton  
 James Herter  
 Ellen Hiatt  
 Elizabeth Hinkle

William Hoffelmeyer  
 Barbara Hoffman  
 Freida Mae Hoffman  
 Gary Holtsclaw

James Hord  
 Lorella Hubbard  
 Joann Hummel  
 Robert Hunt

Sandra Jackson  
 Paul Jennings  
 Betty Jean Johnson  
 Helen Johnstone

Dale Kenneth Jones  
 Thomas Judah  
 Roger Kramer  
 Norma Lambert

Joyce Lane  
 David Layton  
 Linda Lewin  
 Paul Livingston



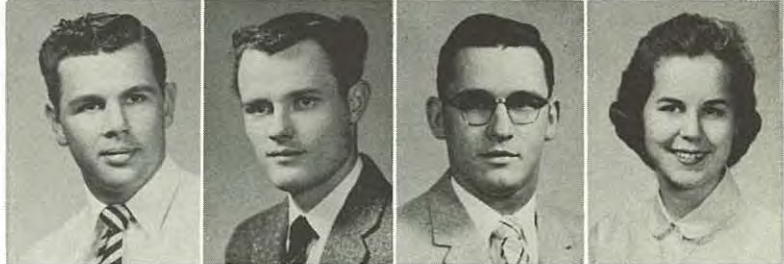
Linda Lomax  
 Robert McCoppin  
 Lee McNair  
 Janice Mabin



Carolyn Miller  
 Nancy Sue Morehead  
 Larry Morgan  
 Susan Nash



John Neff  
 Gerald Nigh  
 Eldon Norris  
 Carol Olney



James L. Patten  
 Lois Ann Pearson  
 Lyla Lee Pollard  
 Nancy Pugh

John Punzo  
 Mary Frances Purcell  
 Mary Sue Richardson  
 Arthur Rocha

Sally Schmitt  
 Lawrence Schultz  
 Maurice Shier  
 Robert C. Smith



Wallie Smith  
 Willadean Smith  
 Shirley Sneed  
 Suzanne Spears



Clark Sprake  
 Milton Stark  
 Richard Stephens  
 Mary Jane Stewart



Mary Lou Stewart  
 Thomas Taylor  
 Sylvia Thacker  
 Juana Tietz

Robert Tietz  
 Ronald Tiffany  
 Robert E. Tolbert  
 Sharon Trapp



Madeline Verssue  
 Alan Weaver  
 Clyde Weeks  
 Leon Weston



John White  
 Marshall White  
 Wesley White  
 Judy Wildhagen



# Freshmen - Camera Shy

James Allen  
 William Allen  
 Jerry Ashlock  
 Phyllis Atkins  
 Gary Bachman  
 Mark Bagby  
 Connie Barnes  
 Donna Blade  
 Jeanie Boyd  
 K. C. Boyle  
 Billie Brown  
 Mary Jo Bryson  
 Peggy Ann Callwell  
 Jacqueline Carter  
 Ronald Carter  
 Billy Catron  
 Carl Chatfield  
 Charles Cline  
 Paulette Cooper  
 Wayne Coy  
 Sandra Crowell  
 William Davenport  
 Robert DeBord  
 Jim DeNeen  
 Nancy Dewey  
 Bonnie Sue Edson  
 Connie Edwinson  
 Bernard Fleischman  
 Larry French  
 Donald Furr  
 Patricia Fry  
 Donna Gabriel  
 Francis Gall  
 Gary Gargis  
 Don Garrett  
 Clara Garrison  
 Larry Gloschen  
 Juanita Goins  
 Gladys Gore  
 Larry Gore  
 Mary Jane Gore  
 Jim Grant  
 Marvin Grimm  
 Max Grooms  
 Roger Henman  
 Rosemary Henry  
 LaVerla Hill



Forrest Hoff  
 Gerald Hopper  
 Larry Irwin  
 Nadia Iwasyk  
 Ann Jackson  
 Kenneth Johnson  
 Loren Johnson  
 Robert Johnson  
 Mrs. Virginia Jones  
 John Joseph  
 Eva Karr  
 Dion Kasakoff  
 George Kemp  
 David Kent  
 Ronald Kistler  
 Lawrence Kline  
 Paul Knapp  
 Joyce Locklin  
 Mary Jane Long  
 Mary Lovelady  
 George Lutz  
 Larry McDowell  
 Gary McIntosh  
 Anna McKanna  
 John McLean  
 Robert McNamara  
 Bernard Madel  
 John Matson  
 Joseph Mazur  
 John Meers  
 Emma Meredith  
 Ronald Midyett  
 Juanita Moore  
 Earl Moran  
 Ada Louise Morgan  
 David Moyer  
 Barbara Nelson  
 Thomas Nurnberger  
 Donna O'Conner  
 Richard O'Konski  
 James Ozenberger  
 Charles Parker  
 Donald Parker  
 Christine Potter  
 Zisis Pourikas  
 Charles Ramsey  
 Dean Elvin Retremeyer  
 George Rice



Donald Richey  
 Robert Rigg  
 Michael Riordan  
 Roger Ripper  
 Donald Ritter  
 Gary Rodes  
 Richard Roberts  
 Charles Roesle  
 Richard Wayne Roll  
 Frank Sansone  
 Frand Schaag  
 Richard Scharff  
 Marguerite Schmitter  
 Jerry Schmutzler  
 Leo Schott  
 Rose Selby  
 Jack Shafer  
 Lester Jerome Shalz  
 Lawrence Shue  
 Roger Sigars  
 Elizabeth Simpson  
 Mary Smith  
 Roger Smith  
 Rosanna Smith  
 Sherry Smith  
 Lowell Snapp  
 Gerald Sommers  
 Delores Sosinski  
 Rex Spangberg  
 Sylvia Stains  
 Robert Stalder  
 Kenneth Stams  
 Gary Swartz  
 Rachel Swoboda  
 Bobby Thompson  
 Roger Thompson  
 Mary Ann Tuley  
 Donald Vollintine  
 Richard Waisblum  
 David Wales  
 Patricia Weiland  
 Thomas West  
 Jack Wheat  
 Armenta Williams  
 Eugene Wilson  
 Carol Wolfing  
 Wilbur Wray  
 Gilbert Wright  
 Gary Yurdovich

# Glimpses



1. Perfect form.
2. Backstage help of the play, "Sparkin."
3. Left holding the bags, Ronnie?
4. A usual morning scene.

5. Getting in the swing.
6. The Christmas dance.
7. Let's all dance.



# Honor Societies



# Phi Theta Kappa



**Back Row:** Dean Irwin, John Beihl, Jane Agee, Janet Melvin, Jean McIntosh, Eileen Rittman, Colleen Wiley, Carol Elder, Rachel Swoboda. **Fourth Row:** Norman Halpain, Gary Brinton, Helen Johnstone, Adolf Lustenberger, Kay Faulkner, Sherry Crockett, Jane Hall. **Third Row:** Carl Hamann, Maudie Chivington, Bob Hautzenroeder, Lois Pear-

son, Lee McNair, John Punzo, Barbara Vetter, Richard Hicks. **Second Row:** Sandra Dawson, Carl Edgar, Caryl Kurz, Sandra Jackson, Page Buckey, Janice Fankhauser, Charles Felling, Fred Gee, Joann Hummel. **Front Row:** Dixie Dunlap, Beverly Johnson, Jon Newman, Stephen Hayes, Louanne Robreau, Mary Alta Hopkins.



**Back Row:** Jon Newman, historian; Stephen Hayes, corresponding secretary; Beverly Johnson, president. **Front Row:** Dixie Dunlap, vice-president; Louanne Robreau, treasurer; Mary Alta Hopkins, recording secretary.

Kappa Chapter of Phi Theta Kappa is the national honorary society chapter of J. C. Membership is based solely on scholastic achievement. The annual project of Kappa Chapter is the compiling and editing of the Junior College Directory. Proceeds from this project are used to send delegates to the annual national convention, which was held at Lawton, Oklahoma. Miss Marian Harvey is the sponsor of Kappa Chapter.



# Delta Psi Omega



**Back Row:** Nancy Sue Morehead, Dick Stephens, James Drowns, Sandra White, John Beihl, Sandra

Jackson (not pictured). **Front Row:** Curtis Zahnd, Darrell Lile, Eileen Rittmann, Page Buckey.

Active participation in dramatic productions at J. C. earns membership in Delta Psi Omega, national dramatics fraternity, a group which seeks to encourage an active interest in drama. Miss Louise Lacy is the sponsor. Much talent is drawn from the organization to produce the student dramatic production known as "Footlights" and the all-school play.



**Back Row:** Darrell Lile, treasurer; Curtis Zahnd, historian. **Front Row:** Eileen Rittmann, vice-president; Page Buckey, president.

# MACE



**John Beihl**



**Louanne Robreau**



**Page Buckey**



**Eileen Rittmann**



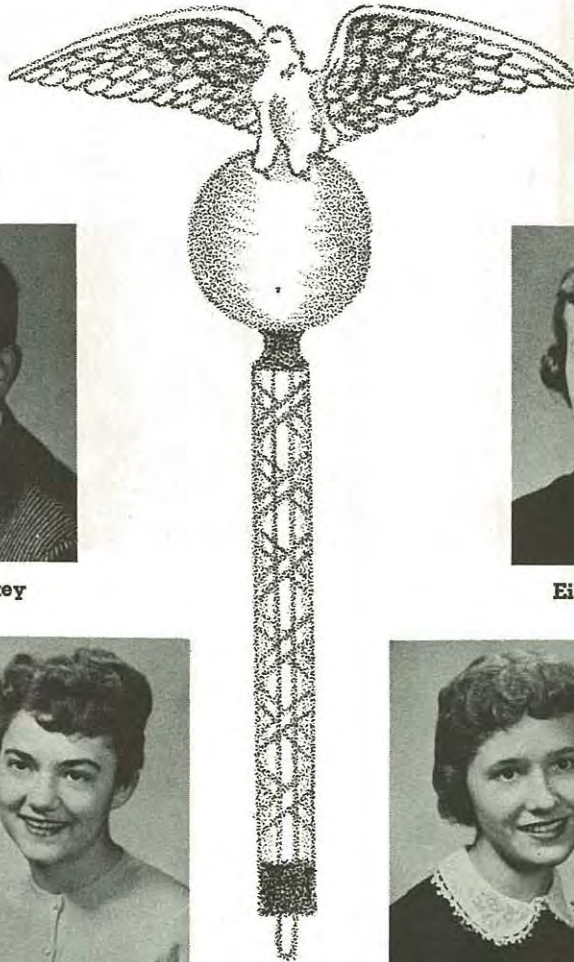
**Helen Bush**



**Jean McIntosh**

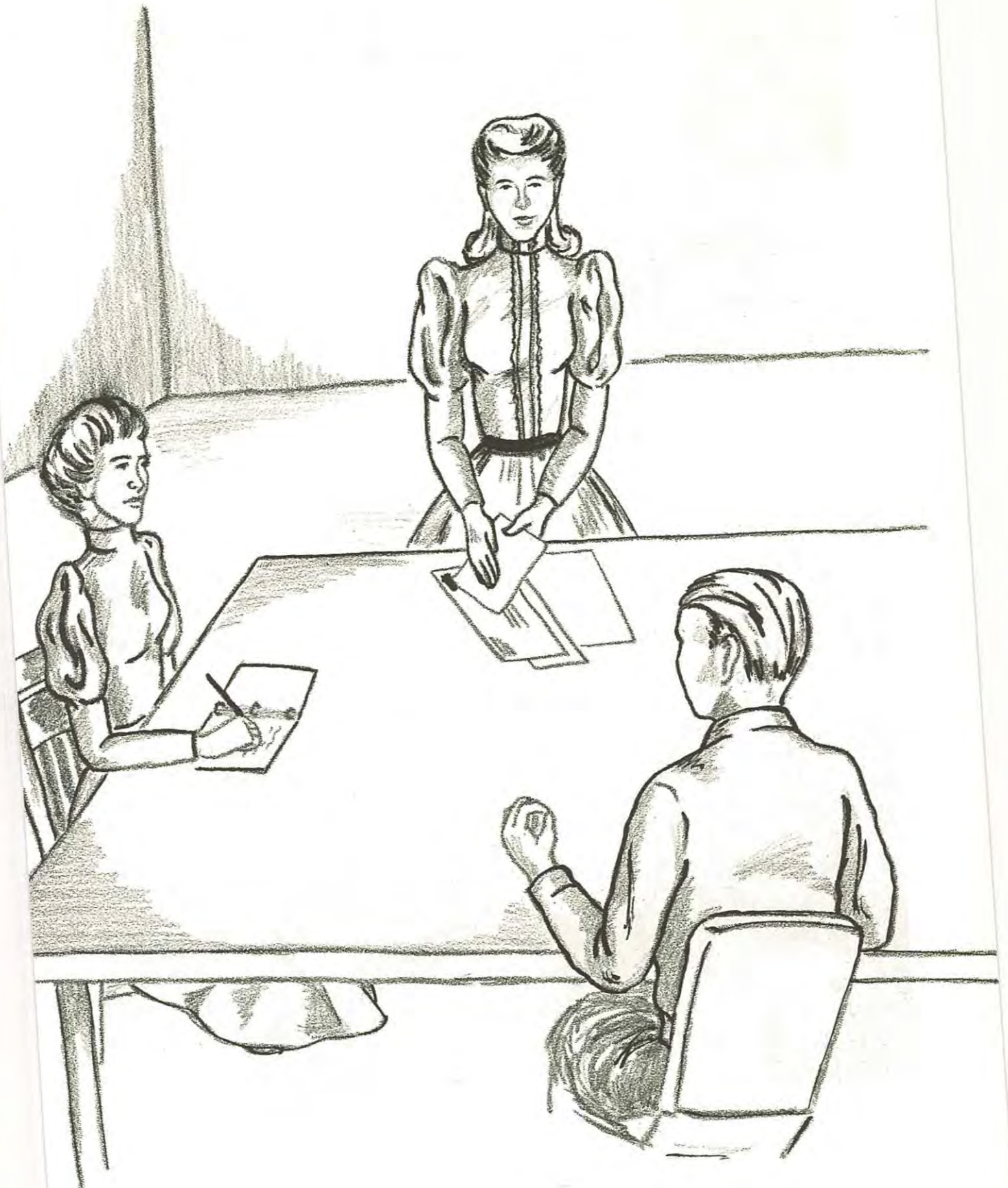


**Beverly Johnson**



The Mace was organized in 1936 and has recognized each year those students who have excelled in service to the college. With Mace membership goes not only recognition, but encouragement to

students to continue to serve in whatever capacities they are able to. Mace membership is the highest honor a student at J. C. can receive.



# Spanish Club



**Back Row:** Jack Frederickson, Nancy Sue Morehead, Dick Stephens, Stephen Hayes, Bob Hautzroeder, Louanne Robreau. **Second Row:** Helen Johnstone, John Beihl, Robert Snell, Ronnie Fuller,

Linda Lewin, Tom Maxwell, Barbara Hoffman. **Front Row:** Nadia Iwasyk, Mary Frances Purcell, secretary; Janice Mabin, vice-president; Joann Hummel, president; Barbara Vetter.

Those students who have studied at least one semester of Spanish at J. C. are eligible for the Spanish Club. Under the direction of Miss Helen Brown the members study the Spanish-speaking countries and become more fluent in the use of the Spanish language. The Spanish Club, along with the other language clubs, meets at the close of the year for an international picnic.



The French Club, under the sponsorship of Miss Clara Albrecht, is composed of students who have completed at least one semester's work of French. All of the programs and meetings of the club are conducted in French and the members endeavor to learn more about the geography, customs and literature of France in addition to increasing their ability to speak the French language.



# French Club



**Back Row:** Rachel Swoboda, Karol Elder, Maudi Chivington. **Second Row:** Charles Felling, Gary Phillips, David Bridenstein, Donna Holmes. **Front**

**Row:** Sandra White, Mary Alta Hopkins, president; James Drowns, secretary; Page Buckley, vice-president; Sandra Jackson.

# German Club



**Back Row:** Colleen Wiley, Youjin Tokko, Charles Roesle, Ed Fattig, Sherry Crockett. **Front Row:** Jean

McIntosh, secretary; John Hall, president; Larry Morgan, vice-president.



The German Club is composed of students of German at J. C. who have had at least one semester of German. Through this club their knowledge of the German language, customs and literature is increased. Miss Clara Albrecht is the sponsor.

Under the direction of Miss Orrel Andrews, the National Science Club was organized to encourage the study of natural science and to assist in the advancement of the St. Joseph Museum. Each year the club sponsors the Science Kermis, proceeds of which are contributed to the Natural Science Endowment Fund.



# Science Club



**Back Row:** Sally Schmitt, Tony Masters, John Hall, Jim Drowns, Tom Bauman, Helen Bush. **Third Row:** Christine Potter, Norma Ahle, Marian Douglas. **Second Row:** Elizabeth Hinkle, Donna Harvey, Frank Clark, Charlene Ivy. **Front Row:** Garnet

Barkus, secretary; Rosemary Hoggatt, reporter; Lawrence Shue, president; Bob Mejia, vice-president; Mary Jane Rodriguez, treasurer; Jeannette Connell, historian.



## Griffon Yearbook

The Griffon Yearbook Staff each year is under the direction of two co-editors and a faculty sponsor. The co-editors for the 1957 Griffon Yearbook are Eileen Rittmann and Suzanne Spears. Mrs. Roberta Riemer is the sponsor. From the beginning of the college term to the end of it, staff members are making preparation for the time when the yearbook will be taken to the printer. Sales are being made, pictures are being taken, a theme is being chosen, art work is being done, copy is being written, and many other details taken care of in order that students of J. C. will have a book of priceless memories to enjoy for years to come.



Eileen Rittmann



Suzanne Spears

1. Tom Fairlie and Sandra Dawson, art editors.
2. Beverly Johnson, literary editor; Janet Melvin and Gary Phillips, business managers.

3. Glenda Nichols, sophomore editor; Shirley Sneed, freshman editor; Garnet Barkus, club pictures.

4. **Back Row:** Shirley Sneed, Sandra Dawson, Janet Melvin, Darrell Lile, Garnet Barkus. **Front Row:** Beverly Johnson, Suzanne Spears, Eileen Rittmann, Glenda Nichols, Tom Fairlie.





## Griffon News

Under the direction of Mr. Richard Taylor and the editors Page Buckey, David Kent and Chandra Wilson, a newspaper known as the **Griffon News** is published bi-weekly. These co-editors along with their staff work many hours to give the students an interesting paper. Page editors and reporters contribute articles of news and arrange their pages, contributing what talents they have in order that the students at J. C. may be informed about events in the future and may have written accounts of activities which take place during the year.



Page Buckey



Chandra Wilson



1. Roger Kramer, business manager; Page Buckey, co-editor; David Kent, second semester co-editor.
2. Beverly Johnson, Mary Alta Hopkins, Sandra Dawson, Stephan Hayes, first and second page editors.

3. Linda Lewin, Sherry Crockett, third page editors; Jim Hord, fourth page editor.
4. **Back Row:** Beverly Johnson, Jim Hord, Mr. Taylor, advisor; David Kent. **Front Row:** Stephen Hayes, Mary Alta Hopkins, Linda Lewin, Sherry Crockett, Page Buckey, Sandra Dawson.

# Engineers' Club



**Back Row:** Eugene Wilson, Norman Halpain, Gene Adams, Carl Hamann, Marshall White, Bill Hoffelmeyer. **Third Row:** John Punzo, Frank Clark, Lee McNair. **Second Row:** Richard O'Konski, Frank Schaag, Mr. Marion, sponsor; Fred Coder, Bob

Pettepier, Jim Ozenberger. **Front Row:** Caryl Kurz, secretary-treasurer; Don Bachali, Adolph Lustenberger, president; Jon Newman, program chairman; Bill Maxwell, vice-president; Art Rocha, Paul Sansone.



All students planning to become engineers are eligible for the Engineers' Club. Under the direction of Mr. Little and Mr. Marion the club held an engineers' banquet this year. They also made trips to Atchison, Kansas to view the Locomotive Finished Materials Plant, and to Iowa University to tour the engineering department there.

Under the direction of Dr. Mary Robinson the Psychology Club holds its monthly meetings at the Woodson Building at the State Hospital. Members seek to plan programs of entertainment for patients there and at the same time further their interest in psychology.



# Psychology Club



**Back Row:** Mary Alta Hopkins, Donna Godman, Betty Johnson, Fred Coder, Joann Fleek, Lyla Lee Pollard, Curtis Zahnd. **Second Row:** Janice Fankhauser, Page Buckey, Gene Adams, Judy Wildhagen, Kay Faulkner, Pat Pruet, Mary Frances

Purcell, Mary Sue Richardson. **Front Row:** Jeanette Connell, Joella Giddens, secretary; Bob Hubbard, vice-president; Anita Allen, president; Linda Lewin, treasurer; Dixie Dunlap.

# Dramatics Workshop



**Back Row:** Dick Stephens, James Drowns, Darrell Lile. **Third Row:** Curtis Zahnd, Sandra Jackson, Joann Hummel, John Beihl. **Second Row:** Susie Nash, Eileen Rittmann, Mrs. Oswald, Marcia

**Akers. Front Row:** Mary Jane Stewart, Sandra White, Louanne Robreau, Nancy Sue Morehead, Page Buckey, Donna Godman.

Dramatics Workshop members are interested in dramatics and help make up the casts, do make-up work, work behind the scenes and help with scenery for college dramatic productions. This year, through the efforts of members of the dramatics workshop and the sponsor, Mrs. Karamenah Oswald, a Christmas play and a one-act play entitled "Sparkin'" were presented at convocations for the student body's enjoyment.



The Art Club is composed of students talented in painting and drawing. Their purpose is to create a real interest in art. Under the sponsorship of Miss Ina Culver, the members make sketching trips and a trip to a nearby art gallery during the course of the year. Members help individually during the year whenever posters, scenery or publicity for J. C. activities are needed. This year they painted murals on the walls of the lunchroom as one of their projects.



## Art Club



**Back Row:** Pat Pruett, Jim Drowns, Kay Laderoute, Mary Maxwell. **Second Row:** Barbara Hoffman, Colleen Wiley, Karol Elder, Helen Bush, Carolyn

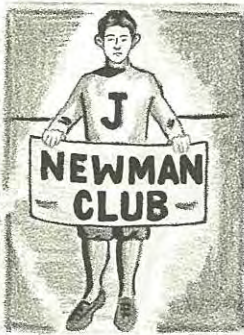
Archdekin. **Front Row:** Sandra Dawson, president; Tom Fairlie, vice-president; Barbara Vetter, secretary; Madeline Verssue.

# Newman Club



**Back Row:** Susie Nash, Charles Roesle, Tom Bauman, Bill Hoffelmeyer, John Punzo, John White, Janet Melvin, Mary Frances Purcell. **Second Row:** Lucy Wertin, Frank Schaaq, Dale Flowers, Roger Thomp-

son, Joann Hummel, Mary Jane Stewart. **Front Row:** Curtis Zahnd, Sherry Crockett, Bill Pittham, treasurer; Tom Nerney, vice-president; Don Bachali, president; Mary Jane Rodriguez, Jeanette Connell.



The Newman Club is an organization composed of Catholic students at J. C. with objectives "to deepen the spiritual and enrich the temporal lives of its members through a balanced program of social, religious, and intellectual activities." They hold their weekly meetings at the Knights of Columbus building, and Father Patrick Tobin is chaplain.

This is the second year that Missouri Methodist Hospital has granted full-time scholarship to the freshmen nurses in order that they can attend J. C. and study such courses as chemistry, comparative anatomy and sociology as a part of their training. Their participation in activities is limited due to their full schedule of training.



# Nurses



**Back Row:** Norma Ahle, Barbara Nelson, Peggy Callwell, Patricia Billings, Connie Edwinson, Donna Harvey, Mary Jo Bryson. **Third Row:** Sherry Smith, Ada Morgan, Velma Kunkle, Carolyn Whitfield, Mary Gore, May Tuley, Marilyn Odson. **Second Row:** Ellen Hiatt, Ann Simpson, Rosemary Henry,

Rose Selby, Anna McKanna, Paulette Cooper, Eva Karr. **Front Row:** Patricia Weiland, Charlotte Brown, Mary Stewart, Rosanna Smith, Joyce Locklin, Elizabeth Hinkle, Carolyn Miller, Luella Hubbard, Patricia Fry.

# Choir



**Back Row:** Larry Gregory, Maurice Shier, Roger Kramer, George Lux. **Second Row:** Donna Holmes, Mary Donna Gannaway, Nadia Iwasyk, Conrad Bensyl. **Front Row:** Mrs. Riemer, Jane Hall, Mrs. Bette Tolbert, Janice Mabin, Mrs. John Creal, Rosemary Housman, Donna Groh, Mary Alta Hopkins, Lyla Lee Pollard.

All those who enjoy singing are eligible for choir. This year the choir took part in the all-school play, **Our Town**, and presented inspirational selections at the Christmas convocation. Mrs. Roberta Riemer directs the choir.



## Girls' Ensemble

**Back Row:** Shirley Sneed, Nadia Iwasyk, Linda Lewin, Pat Corbin, Janice Fankhauser. **Front Row:** Diane Douglas, Donna Godman.

These two singing groups were organized at the beginning of second semester this year and are to be available for programs, convocations and to take an active part in the Easter Program. Mrs. Roberta Riemer directs the two groups and Mrs. Bette Tolbert acts as accompanist for the Madrigal Singers and Miss Donna Groh accompanies the Girls' Ensemble.

## Madrigal Singers



**Back Row:** Sharon Trapp, Larry Gregory. **Front Row:** Sandra White, Beverly Johnson, Eileen Rittmann, Maurice Shier, Roger Kramer, Ronnie Carter.

# Melody Mill Dances



1. Jim Courtney and Charlene Ivey reign over the Halloween dance.
2. Watching the crowning.
3. Jim and Charlene have the first dance.

4. Melody Mill Committee: Mary Jane Stewart, Charlene Ivey, Helen Bush, Barbara Vetter, Donna Holmes.
5. Valentine Sweetheart—Donna Holmes.
6. Valentine Sweetheart and Attendants.
7. A pause to refresh.

# Activities



# OUR



The Stage Manager listens to Mr. Webb answer questions about "Our Town."

Tom—Page Buckey.

Mrs. Gibbs—Nancey Sue M head.

Mr. Gibbs—Dick Stephans.

Rebecca—Marcia Akers.



George and Emily enjoy an ice cream soda in the corner drug store.



Professor Willard—Fred Gee.  
Simon Stimson—Gerald Hopper.  
Mrs. Soames—Joann Hummel.



"The mind of God—that's what it said on the envelope."

Stage Manager—John Beihl.  
Joe Crowell—Larry Symes.  
Howie Newsome—Conrad Bensyl.

"Well, if you love me, help me "

"I figure its just the way a person born."





# TOWN

aily—Sandra Jackson.

Mrs. Webb—Eileen Rittmann.

Mr. Webb—James Drowns.

Wally—Gerald Prindle.



Howie delivering the milk as usual to Mrs. Gibbs's door.



"I'm the brightest girl in school for my age."



"Really, it's the worst scandal that ever was in this town!"



Constable Warren—Roger Thompson.  
Si Crowell—Mike Riordan.  
Sam Craig—Darrell Lile.

Joe Stoddard—Jim Patten.  
Director—Louise Lacy.

Mrs. Gibbs and Mrs. Webb enjoy their bean picking and gossip session.

The entire cast takes a final curtain call.

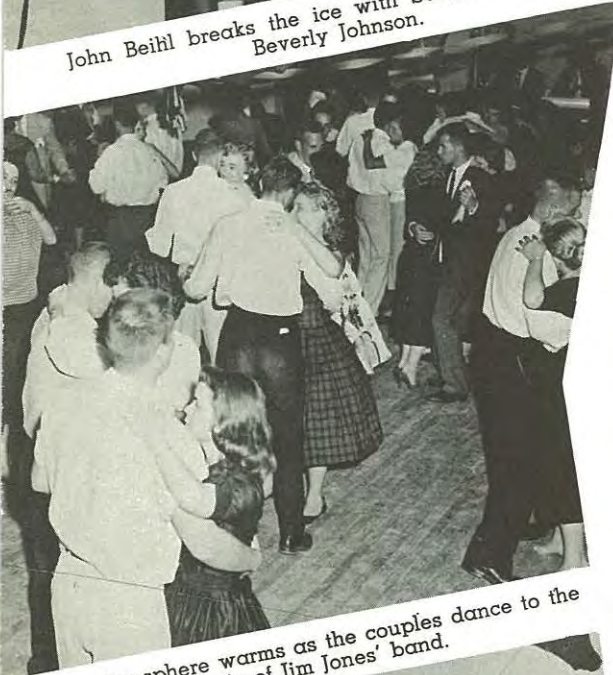




John Beihl breaks the ice with Sally Schmitt and Beverly Johnson.



The faculty joins in to help break the ice.



The atmosphere warms as the couples dance to the music of Jim Jones' band.

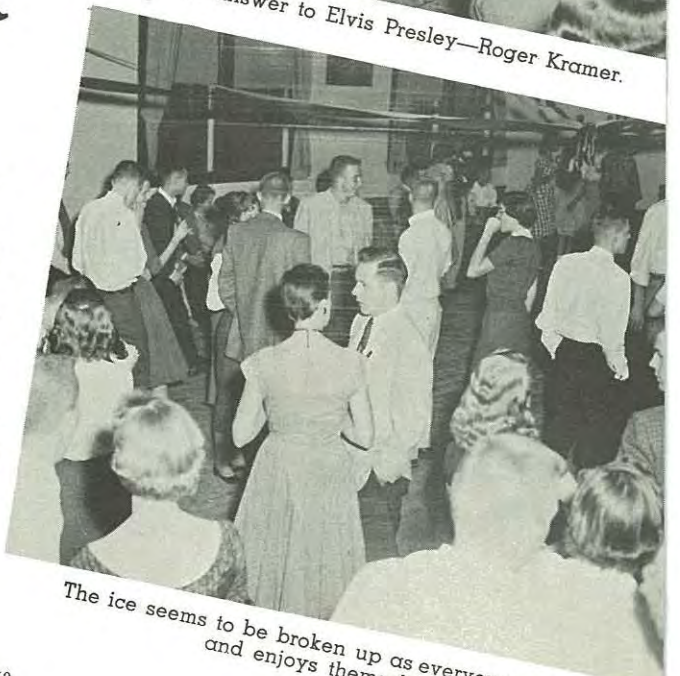
I  
C  
E  
  
B  
R  
E  
A  
K  
E  
R  
  
1  
9  
5  
6



J. C.'s answer to Elvis Presley—Roger Kramer.



"Meanwhile, back in the states" sings Sharon Trapp assisted by John Beihl and Jim Jones.



The ice seems to be broken up as everyone mingles and enjoys themselves.



Ganny accuses Orry of ruining her new white dress.



Curtain call for the cast of the comic one-act play.



Orry has come acourtin' Lessie.

### Cast

Susan Hanna—Jane Agee.  
 Lessie Hanna—Helen Johnstone.  
 Director—Louise Lacy.

# SPARKIN

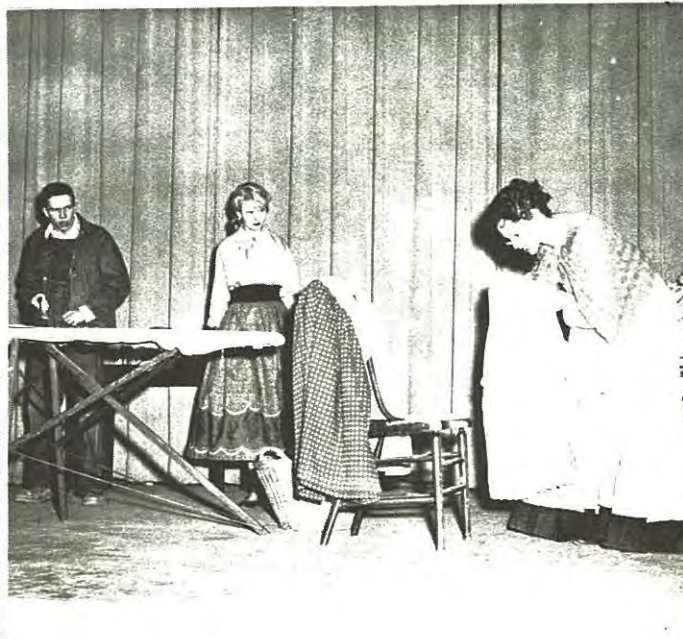
### Cast

Granny Painsberry—Joann Hummel.  
 Orry Sparks—Conrad Bensyl.  
 Prompter—Maudie Chivington.

Orry shows Lessie a strange handkerchief.  
 Orry Sparks.



"Somebody's been spitting tobacco all over my dress."



Granny prepares to stay up while Orry courts Lessie.





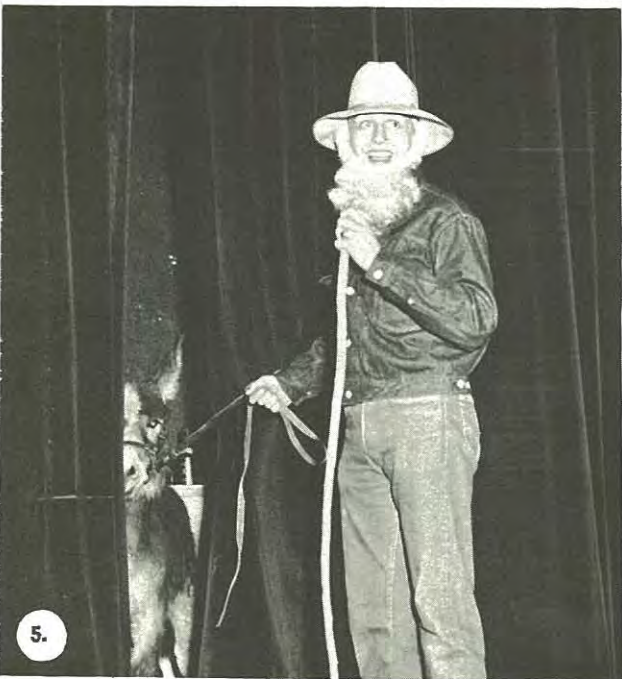
1.



3.



# DOUBLE



5.



1. "I'm In The Jail House Now."
2. Becky, Dan and "One Night of Love."
3. Lynching the town hero.

4. Just a "Good Old Fashioned Hoe Down."
5. Stage frightened burro.
6. "It was self-defense."



# CROSS



- 1. The cast takes a bow.
- 2. "If I Had My Life to Live Over."
- 3. Jailbirds.

- 4. Villain and hero clash.
- 5. Let's have a little can-can.
- 6. "Swing your partner."

# Science Kermis



1.



2.



3.



4.



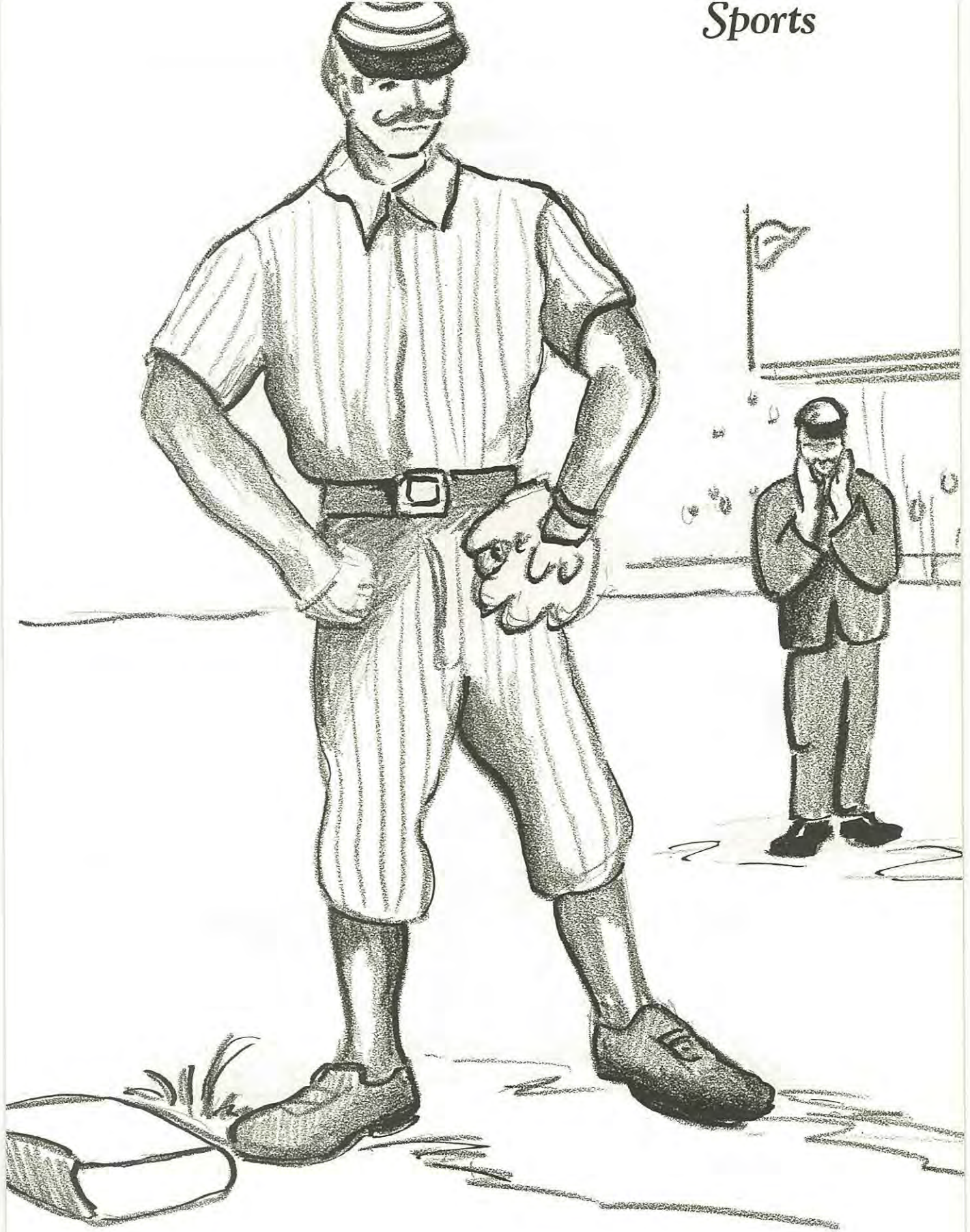
5.



6.

1. What's cooking?
2. The correct use of fire extinguishers.
3. The fashion show garden party.

4. Zoology and botany class works on display.
5. Nice display at the refreshment stand, too.
6. Geology and chemistry displays draw interest.



# Basketball Queen and Attendants



**Queen Beverly Johnson**



**Glenda Nichols**

**Maid of Honor**



**Marcee Moldaver**



**Susan Nash**



**Jean McIntosh**

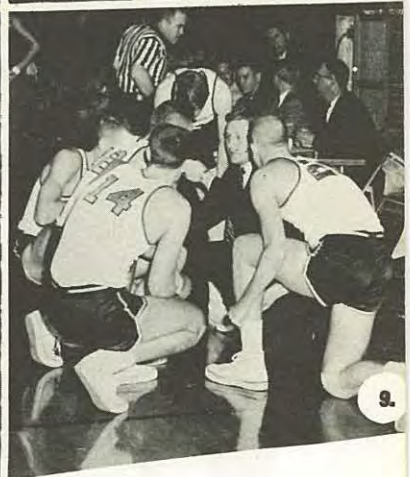


**Helen Bush**

Beverly, as this year's Basketball Queen, displays all the characteristics of royalty. Her pleasing personality and winning smile have won her a multitude of friends. Always eager to lend a helping hand in the various activities, she has won the admiration of the entire student body.



# Homecoming



1. What! A dance!

2. "We just love a parade."

3. Behold! our Queen.

4. "Jump, John."

5. Queen Beverly and her court.

6. "Get that ball and go to town."

7. Off to a warm start.

8. Give us a yell.

9. Shhhh——Top secret.

# Second Annual Junior College Tournament



1. Before the game——!
2. F-I-G-H-T!
3. Legs, legs and more legs!

4. It's in.
5. How high can one go?
6. Trapped!

# Basketball Team



**Back Row:** Dennis Shalley, Bob Mejia, Dick Graham, K. C. Boyle, Roger Bradley. **Second Row:** Byron Baker, Coach; Melvin Clark, Lawrence Poirier,

Bob McNamera, Tom Nurnberger. **Front Row:** Wes Kagay, Don Vollintine, John Hall, Tony Masters, Karlton Nash.

## ST. JOSEPH BASKETBALL

### ST. JOSEPH JUNIOR COLLEGE BASKETBALL STATISTICS

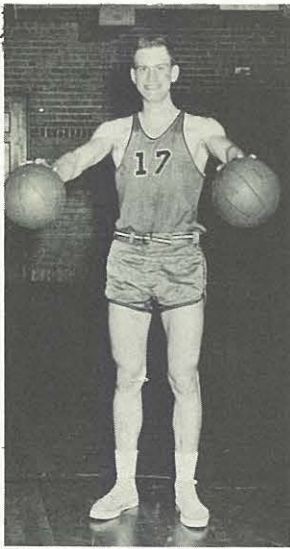
1956-1957

St. Joseph.....	54	St. Paul's College.....	55
St. Joseph.....	76	Clarinda, Iowa .....	84
St. Joseph.....	54	Southwest Baptist .....	68
St. Joseph.....	61	Clarinda, Iowa .....	71
St. Joseph.....	62	Fairbury College .....	64
St. Joseph.....	67	Hannibal Junior College.....	80
St. Joseph.....	64	Fort Leavenworth Flyers.....	62
St. Joseph.....	38	Highland Junior College.....	62
St. Joseph.....	35	Highland Junior College.....	58
St. Joseph.....	74	K. C., Kansas, Junior College.....	104
St. Joseph.....	62	Clarinda, Iowa .....	90
St. Joseph.....	61	Trenton Junior College.....	57
St. Joseph.....	62	Springfield Baptist Bible College.....	60
St. Joseph.....	59	Wentworth Junior College.....	68
St. Joseph.....	75	St. Paul's College.....	57
St. Joseph.....	50	Moberly Junior College.....	93
St. Joseph.....	71	Moberly Junior Colege.....	100
St. Joseph.....	63	Trenton Junior College.....	85
St. Joseph.....	54	Jefferson City Junior College.....	71
St. Joseph.....	33	Hannibal Junior College.....	76
St. Joseph.....	59	K. C., Kansas, Junior College.....	56
St. Joseph.....	82	Jefferson City Junior College.....	86
St. Joseph.....	69	Fairbury Junior College .....	79
St. Joseph.....	80	Springfield Baptist Bible College.....	51
St. Joseph.....	64	Southwest Baptist .....	98

### NATIONAL REGIONAL TOURNAMENT

St. Joseph.....	53	Highland Junior College.....	66
-----------------	----	------------------------------	----

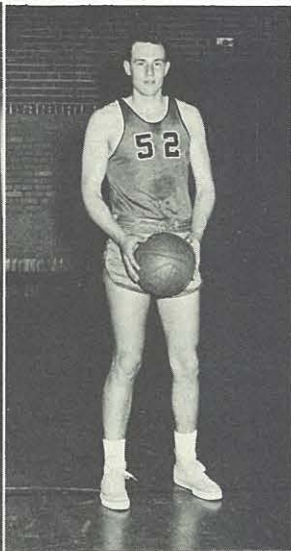
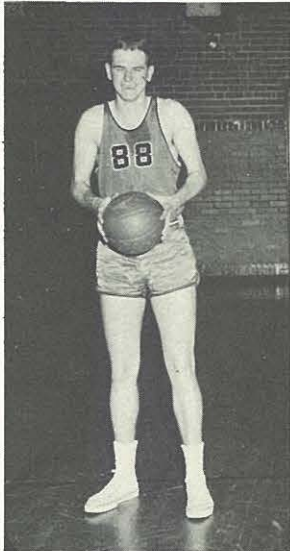
# Basketball



John Hall

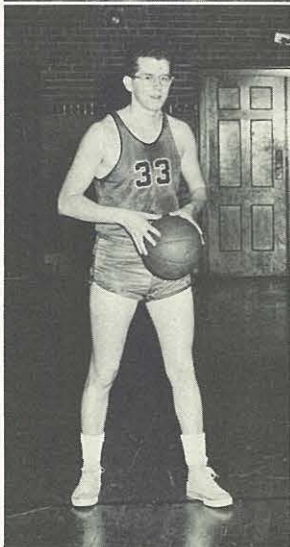


Coach, Byron Baker



Don Vollintine

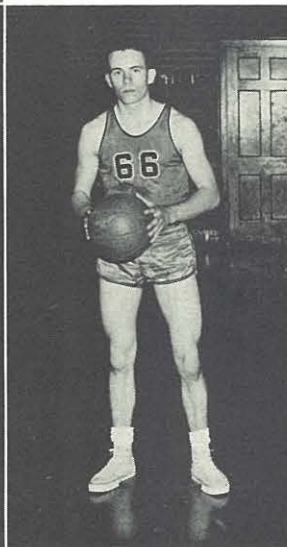
Dick Graham



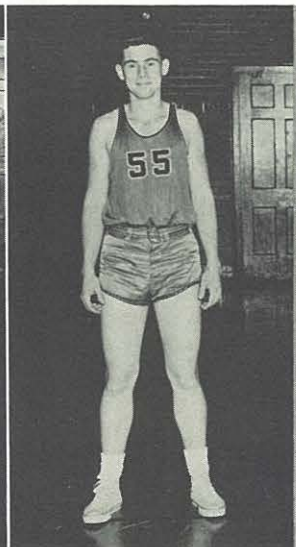
Roger Bradly



Tony Masters



Lawrence Poirier



K. C. Boyle

# Lettermen

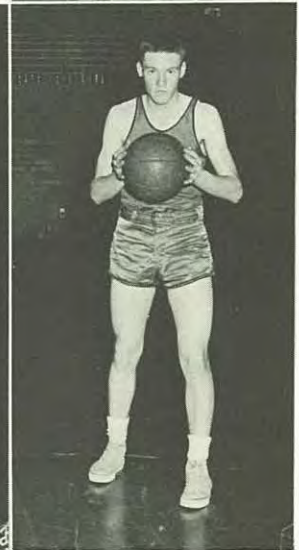


Wes gets some assistance.

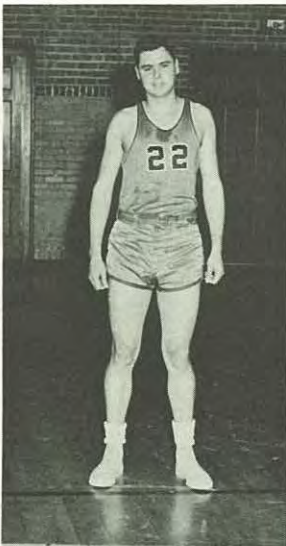
Tom Nurnberger  
Student Manager



Wes Kagay



Bob McNamara



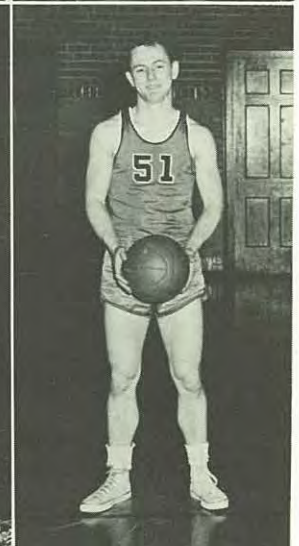
Bob Mejia



Karlton Nash



Melvin Clark



Dennis Schalley

# Cheerleaders



Sandra White, Sandra Jackson, Glenda Nichols, Janet Melvin, Jean McIntosh, Eileen Rittmann, Sally Schmitt, Susie Nash, Marcee Moldaver.



"Are we gonna beat———?", the enthusiastic cheerleaders ask the Pep Squad. At the beginning of this year three new cheerleaders were chosen from seven freshmen girls. The nine cheerleaders and the pep-master helped to bring pep and enthusiasm to the games, and presented several Pep assemblies to rouse the student body spirit. Traveling to Jefferson City with the Pep Squad, they helped cheer the team along. Thus much of the school spirit is due to the cheerleaders.



**Back Row:** Jim Hord, pep master. **Second Row:** Sandra White, Eileen Rittmann, Jean McIntosh, Sally

Schmitt, Marcee Moldaver. **Front Row:** Sandra Jackson, Glenda Nichols, Janet Melvin, Susie Nash.

# Pep Squad



**Back Row:** Beverly Johnson, Sandra Dawson, Karol Elder, Kay Laderoute, Helen Bush, Anita Allen, Jeanne Douglas, Wanda Russell, Glenda Nichols, Sally Schmitt. **Fourth Row:** Sharon Bezona, Lucy Wertin, Norma Lambert, Linda Lewin, Betty Johnson, Barbara Hoffman, Helen Dischner, Sharon Conley, Eileen Rittmann, Susan Nash. **Third Row:** Nancy Sue Morehead, Donna Holmes, Lyla Lee Pollard, Paddy Fletcher, Mary Sue Richardson, Jane

Agee, Mary Frances Purcell, Pat Corbin, Mary Jane Rodriguez, Jean McIntosh, Janet Melvin, Sandra White. **Second Row:** Dixie Dunlap, Helen Johnstone, Linda Lomax, Charlene Ivey, Jeanette Connell, Joanne Fleek, Donna Godman, Sandra Jackson. **Front Row:** Garnet Barkus, Judy Dake, Louanne Robreau, Joann Hummel, Darlene Hahn, Shirley Sneed, Mary Jane Stewart, Willadean Smith, Marcee Moldaver.



Along with the cheerleaders and pep-masters, the pep squad members provide a cheering section for J. C. at basketball games. The Pep Squad has charge of the concession stand at home games. This year members of the Pep Squad traveled to Jefferson City to see the Griffons play basketball.

Membership in the "J" Club is automatic when one receives a "J" for participation in some sport or athletic activity. The purpose of the club is to increase the interest in J. C.'s athletic program.



## "J" Club



**Back Row:** Frank Clark, Lawrence Poirier, Wes Kagey, K. C. Boyle. **Fourth Row:** Larry Gregory, Bob Mejia, Dick Graham. **Third Row:** Janet Melvin, Beverly Johnson, Tony Masters, Mel Clark, John

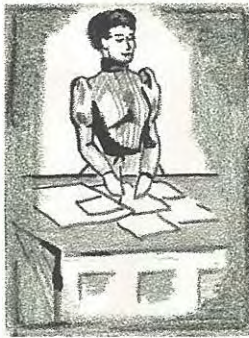
Hall. **Second Row:** Don Vollintine, Louanne Robreau, Karol Elder, Sandra Dawson, Linda Lewin. **Front Row:** Marcee Moldaver, Glenda Nichols, Jean McIntosh, Sandra Jackson, Eileen Rittmann.

# Women's Athletic Association



**Back Row:** Louanne Robreau, Judy Wildhagen, Jean McIntosh, Karol Elder, Helen Dischner, Kay Faulkner. **Front Row:** Barbara Vetter, Linda Lewin,

Lucy Wertin, Beverly Johnson, Norma Lambert, Sandra Dawson, Pat Corbin.



The W. A. A. is composed of those girls at J. C. who are interested in athletics. Members this year organized a basketball team, under the sponsorship of Miss Clara Albrecht, and played in the Y. W. C. A. League. Bowling and ping-pong were other activities of the group.



## Girl's Basketball Team



**Back Row:** Kay Faulkner, Beverly Johnson, Norma Lambert, Sandra Dawson, Karol Elder. **Front Row:** Luck Wertin, Linda Lewin, Jean McIntosh.