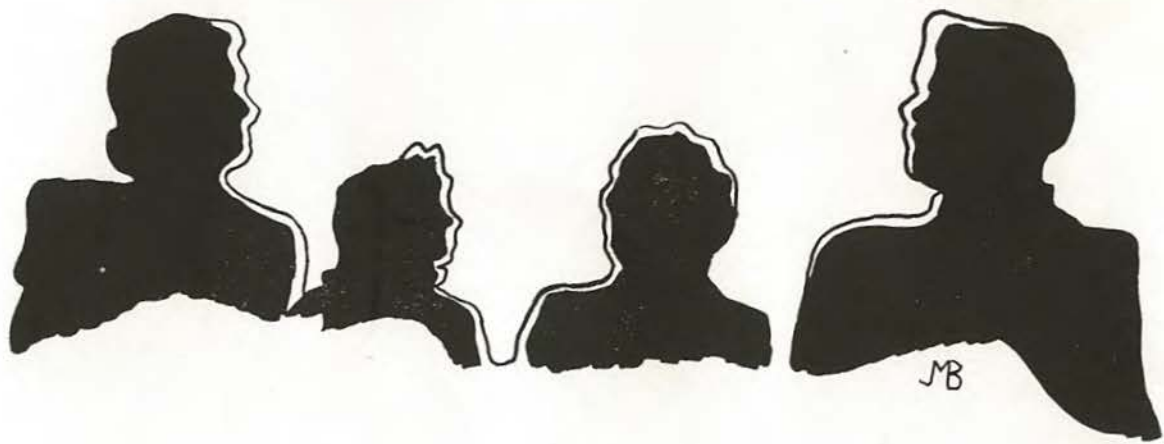
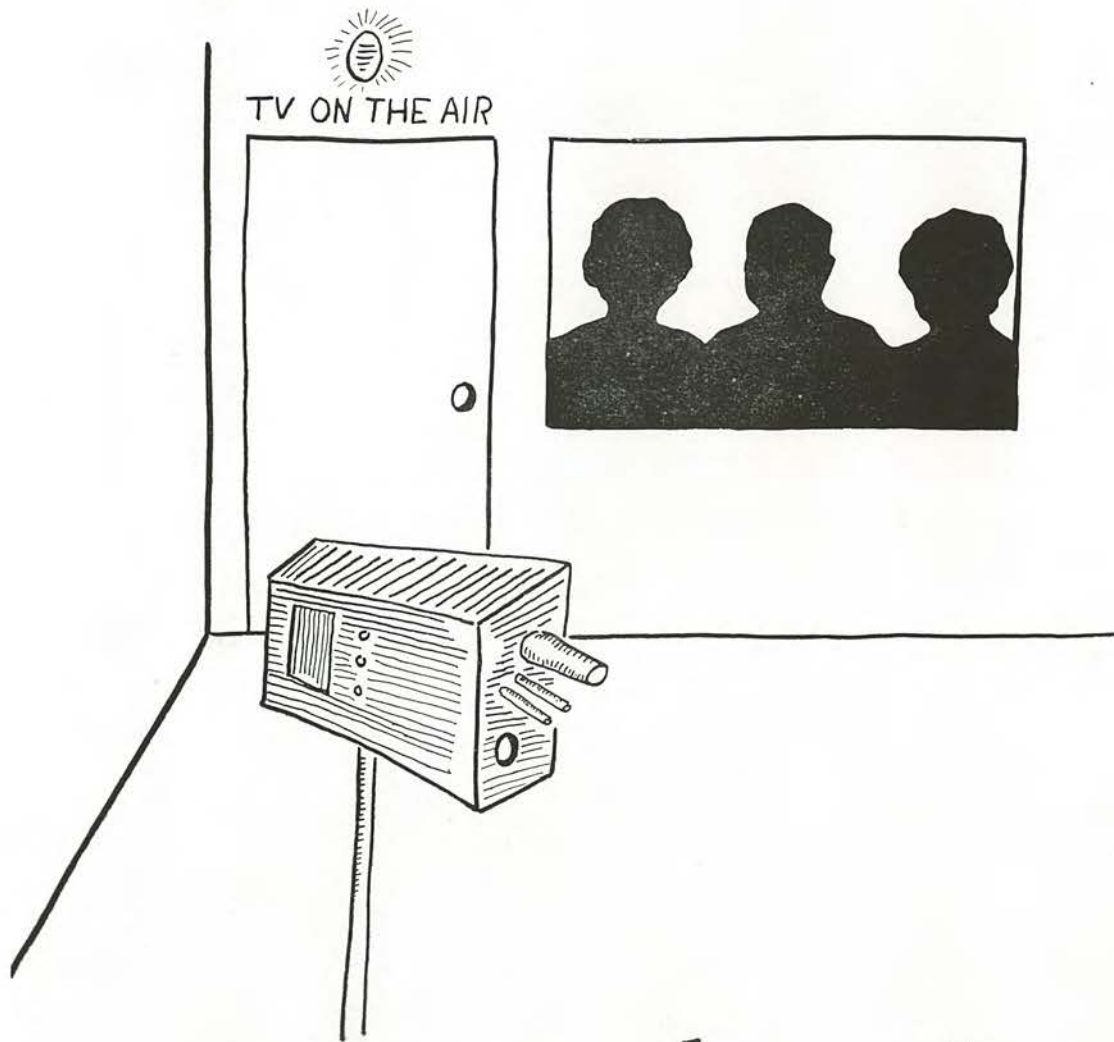


The Griffon



This yearbook may contain images, language, or other content that could be offensive to modern users. The content may be disturbing and offensive, but should be viewed within the context of that period. The material is being presented as part of a historical record and in no way reflects the values of Missouri Western State University.

Sponsors



administration

JB



Our dean, Miss Nelle Blum, has again guided the students of Junior College through an excellent school year. Through her great wisdom, she has been able to attack each new problem with courage and perseverance, seeing it through to its successful conclusion. Although ever busy, Miss Blum never fails to find time to give to the student who needs her help. So it is that we salute our dean.



R. V. BLOMFIELD

Assistant Superintendent, in Charge of Business



G. M. COLEMAN

Supervisor of Instruction and Attendance



W. D. BRACKEN
Physics
A. B., A. M.



HELEN BULLARD BROWN
Spanish
A. B., A. M.



INA CULVER
Art
B. S., A. M.



D. T. DOWNS
Economics
A. B., A. M.



AMY DOROTHY EWAN
Education
B. S., A. M.



MARIAN HARVEY
Social Science
A. B., A. M.



BEULAH M. HICKS
Music
A. B., A. M.



LOUISE LACY
English
A. B., A. M.



GLENN E. MARION
Mechanical Arts
B. S., M. S.



DORIS ADAMS



NEVA ADAMS



ANNA MAE BARTO



SUSAN BECK



JANE BENIGHT



WILLIAM BLAIR



MONTE BLUE



MAX BODENHAUSEN



ALBERT BOLZ



BETTY CAROL BOYDSTON



LOU ANN BOYER



MADINE BUCKEY



BILL BURTNETT



ALICE COOK (PHILLIPS)



PAUL CROTTY



DARLENE DALE



JEAN JOHNSON



SHIRLEY JOHNSON



DONALD KAGAY



GYRA KASTNER



GEORGE KEMP



GLEN KITZENBERGER



JAMES KLINE



CAROL KRAMER



CHARLES LARSON



PATRICIA LEHMAN



PAULA McVAY



ROBERT McVEY



ROBERT MATTILL



BARBARA MAXWELL



GERALD MELKOWSKI



ROBERT MILLS



ELEANOR ROSE



GEORGE SANBORN



JEANNETTA SAWYER



MONTE SCHAUFFLER



FRANCIS SCHLUP



MADALYNE SCHWEDER



BARBARA SEWELL



GENE SHANKLIN



JACK SHANKLIN



ROBERT SHEA



KATHLEEN SHREVE



DONALD SILCOTT



CONNIE SKINNER



ANNA SMAICH



ROBERT STINSON



JO ANN STUREK

Understudies



Joan Carpenter
 Charlene Carr
 Donna Coons
 Robert Cook



Ronald Cook
 Thomas Cook
 Hugh Corbet
 Phillips Cox



Doris Jean Coy
 John Creal
 Jack DeVorss
 Mary Ann Doolen



Donna Dotson
 Clifford Duty
 Allan Eberle
 Pete Elo



Donald Farris
 Shirley Felch
 Robert Flint
 William Grieshaber



Beverly Moore
 Norma Mossman
 Glenn Muir
 Larry Ozenberger



Carol Peters
 Donna Radke
 Carolyn Rice
 Charlene Riemen



Thomas Robertson
 Robert Sauceman
 Roseanne Schranck
 Barbara Seeber



Larry Seever
 Larry Sell
 John Shanahan
 Peggy Shepherd



Beverly Smith
 Floyd T. Smith
 Fred Smith
 Byron Thompson



Organizations



MACE



First row (left to right)—Bob Stinson, Barbara Sewell.

Second row—Fred Beihl, Neva Adams, Jim Ozenberger, Gene Shanklin.

The Mace was organized in 1936 in order to encourage constructive student activity in the service of the school.

Membership in the Mace is based exclusively on activity and service. The new members are chosen by the existing ones each semester as specified by the constitution.

This society is an honorary one and has no officers or activities. To be elected to the Mace, by his fellow students, is considered one of the highest honors that can come to a student.

CHESHIRE CHEESE



First row (left to right)—Fred Beihl, Meredith Ray, Bob Stinson, Charlene Carr, Barbara Maxwell.

Second row—Madine Buckey, Pat Pettepier, Jeannetta Sawyer, Joan Carpenter, Carol Peters.

Third row—Barbara Douglas, Bill Wilson, Donna Van Volkenburgh, Laura Gallacher, Harry Walker, Penny Maggas.

The Cheshire Cheese Club is the literary club of Junior College. Its purpose is to stimulate the appreciation of good literature and to encourage literary efforts of the members.

Each year tryouts are held in which prospective members read an original work and a critical review.

The name of the club is taken from an 18th century London tavern which was the meeting place of the intellectual and literary figures of the day.

The officers of the club are: Bob Stinson, president; Meredith Ray, vice-president; and Charlene Carr, secretary. The sponsor is Miss Emily Wyatt.

The highlight of this year's activities was the trip to Kansas City where members of the club saw Katherine Hepburn and William Prince in Shakespeare's "As You Like It."

FRENCH CLUB



First row (left to right)—Charlene Riemen, Pat Pettepier, Jo Ann Hardman, Meredith Ray, Donna Radke.

Second row—Sally Freeman, Neva Adams, Jim Ozenberger, Carolyn Rice, Nanette Nelson.

Third row—Susan Beck, Jeannetta Sawyer, Bob Stinson, Barbara Douglas, Pauline Richey.

The purpose of the French Club is to develop the student's ability to speak and understand the French language and to acquaint him with France and the French people.

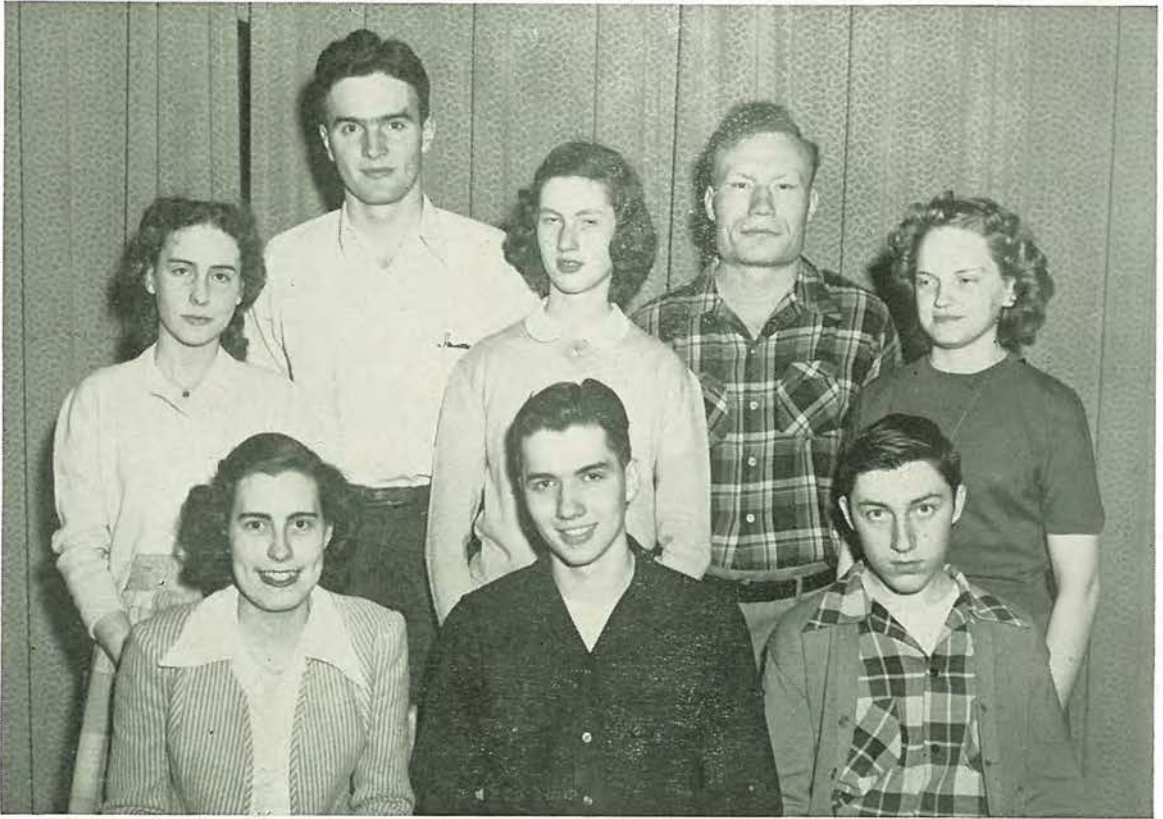
To be a member, the student must have completed at least one semester of college French.

Programs and entertainment at the meetings are presented in French.

The officers are: Jo Ann Hardman, president; Meredith Ray, vice-president; and Pat Pettepier, secretary.

Miss Clara Albrecht is the club's sponsor.

GERMAN CLUB



First row (left to right)—Barbara Seeber, Glen Kitzenberger, Bob Nold.

Second row—Nancy Hoopes, Carole Kleeman, Eleanor Rose.

Third row—Roger Knapp, Bob Mattill.

The German Club seeks to develop the students' ability to speak and understand German, especially in social intercourse, and to promote understanding of the German people.

To become a member, the student must be a second year student or a second semester student of first-year German.

The business sessions of the meetings are conducted exclusively in German.

The officers of the club are: Glen Kitzenberger, president; Bob Mattill, vice-president; Nancy Hoopes, secretary; and Carole Kleeman, treasurer.

Miss Clara Albrecht sponsors the club.

PSYCHOLOGY CLUB



First row (left to right)—Barbara Sewell, Anna Mae Barto, Carol Kramer, Bette Miller, Katherine Athens, Penny Maggos, T. L. Pursley, Donna Radke, Carolyn Rice, Neva Adams.
Second row—Doris Jean Coy, Janet Black, Carol Peters, Dixie White, Romaine Douglas, Bill Raymond, Hugh Wilson.
Third row—Pauline Richey, Charlene Riemen, Lucy Everett, Jim Ozenberger, Betty Jo Phillips.
Fourth row—Mary Garvey, Darlene Horine, Marilyn Waggoner, Gene Kasper.
Fifth row—Letha Adams, Gene Shanklin, Glen Kitzenberger, Bob Shea, George Rice, Max Bodenhausen.

The Psychology Club has as its purpose the increasing of the student's interest in psychology and in knowledge of its principles through discussion and experimentation.

There are no requirements for membership other than a sincere interest in psychology and the willingness to devote time to its study.

The club meets every week at the State Hospital. The members take part in community sings and volleyball while at the meetings.

This year the club sponsored a student talent show, "Footlights," "The Happy Journey," and the Central Variety Show which were given at the hospital for the entertainment of the patients.

The first semester officers are: Jim Ozenberger, president; T. L. Pursley, vice-president; Barbara Sewell, secretary; Carol Kramer, treasurer; and Larry Ozenberger, reporter.

The second semester officers are: T. L. Pursley, president; Bob Shea, vice-president; Carol Kramer, secretary; Romaine Douglas, treasurer; and Marilyn Waggoner, reporter.

Dr. Mary Robinson sponsors the club.

DRAMATICS CLUB



First row (left to right)—Penny Maggas, Paula McVay, Betty Jo Phillips, Bill Raymond, Charlene Carr, Virginia Gray, Mary Garvey.

Second row—Doris Jean Coy, Barbara Douglas, Neva Adams, Hugh Wilson, Bill Wilson.

Third row—Joan Carpenter, Marilyn Waggoner, Jim Ozenberger, Jackie Utz, Romaine Douglas.

Fourth row—Bob Stinson, Fred Beihl, Jeannetta Sawyer, Gene Kasper, George Kiefer.

The Dramatics Club has as its purpose the promotion of appreciation and interest in the drama by study and acting. Tryouts, open to all students in the school, are held twice yearly and new members are elected by the old members.

This year the Dramatics Club presented "The Happy Journey," a one-act play by Thornton Wilder, on a convocation, and later gave the same play for the entertainment of the patients at the State Hospital.

The club meets twice a month and short plays are given and discussed at the meetings.

The activities of this year included a party held at the home of Neva Adams in King City, Mo.

The first semester officers are: Jim Ozenberger, president; Fred Beihl, vice-president; Jeannetta Sawyer, secretary-treasurer; and Neva Adams, reporter.

The second semester officers are: Betty Jo Phillips, president; Bill Raymond, vice-president; Charlene Carr, secretary-treasurer; and Larry Ozenberger, reporter.

Miss Louise Lacy sponsors the club.

NEWMAN CLUB



First row (left to right)—Virginia Gray, Mary Ann Doolan, JoAnn Sturek.
Second row—Mary Garvey, Ann Smaich, Monte Schauffler, JoAnne Barry, Roseanne Schranck.
Third row—Tom Lorenz, George Kiefer, Jerry Reeves, Byron Thompson, Genaro Montemore.
Fourth row—Jack Bennett, Clark Morin, Pete Elo, Gene Shanklin, Tom Robertson.

The Newman Club is the organization at Junior College for Catholic students. The programs are planned to carry out the broad objectives of the national Newman Club Federation — "to deepen the spiritual and enrich the temporal lives of its members through a balanced program of religious, intellectual, and social activities."

The club meets once a week at St. Joseph's Cathedral.

The officers for this year are: Thomas Cook, president; Jo Ann Durks, vice-president; Roseanne Schranck, secretary; and Charles Larson, treasurer.

J CLUB



First row (left to right)—David Lewis, Byron Thomas, Bill Gloschen, Don Tilton.
Second row—Glen Kitzenberger, Larry Ozenberger, Max Bodenhausen, Byron Thompson.
Third row—George Rice, Charles Larson, Bill Raez, Paul Crotty.

The J Club is the organization for men students in Junior College who have earned a letter. The letter may be earned in basketball, track, golf, tennis, cheerleading, or any other sport or activity.

The purpose of the J Club is to further interest in athletics and to cooperate with the coach and the administration in the development of a strong athletic program at Junior College.

J. C. Y. W. C. A.



First row (left to right)—Willa Mae Brock, Betty Boydston, Emma Yurkovich, Mary Beutler.
Second row—Delores Miller, Letha Adams, Norma Mossman, Mary Ellen Brock.

The Junior College Young Women's Christian Association was organized to stimulate wholesome activities and to promote friendship through adherence to Christian ideals and techniques.

The J. C. Y. W. C. A. this year sponsored the Easter services held each morning during Easter week. In conjunction with these, members collected contributions from Junior College students for the World Service Fund.

The officers are: Betty Carol Boydston, president; Willa Mae Brock, vice-president; and Mary Beutler, secretary.

The sponsor is Miss Amy Ewan.

Productions



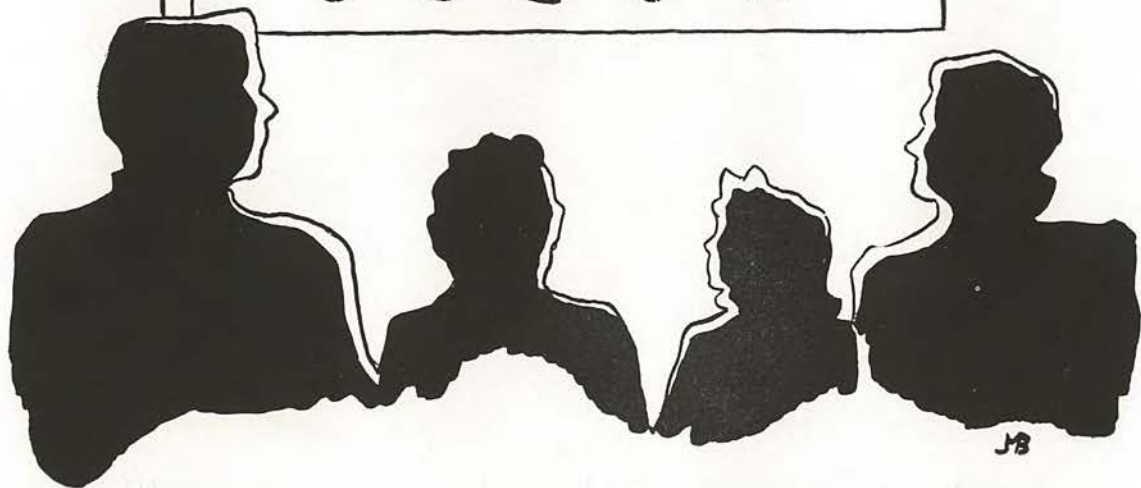


SCENES FROM "THE LATE GEORGE APLEY"
 page forty-seven



SCENES FROM THE 1951 "FOOTLIGHTS"

Sports



JB

VARSIITY BASKETBALL



DAVID LEWIS



J. C. WOOD



ED MESSBARGER



JACK GUINN



CHARLES LARSON

COACH AND SQUAD



BILL RINGER, Manager



BYRON BAKER, Coach



BILL GLOSHEN, Assistant Coach



First row (left to right)—Bill Gloschen, Ed Messbarger, Paul Crotty, Byron Thompson, David Lewis, J. C. Wood, Byron Baker.
 Second row—Larry Ozenberger, Don Tilton, Byron Thomas, Bill Ringer, Jack Guinn, Charles Larson.



OUR QUEEN — JO ANN HARDMAN

PEP MASTERS



Max Bodenhausen and Bill Raymond

PEP CLUB



First row (left to right)—Penny Maggas, George Rice, Jean Godman, Neva Adams, Pat Lehman, Pauline Richey, Janet Booth.
Second row—Pat Carlson, Lucy Everett, Katherine Athens, Elaine Walker, Barbara Sewell, Jackie Utz, Marilyn Waggoner.
Third row—Darlene Dale, Charlene Riemen, Janet Black, Mary Carvey, Eleanor Keller, Donna Dotson.
Fourth row—Betty Jo Phillips, Gene Shanklin, Doris Jean Coy, Bill Raymond, Letha Adams, Jim Ozenberger.

GIRLS' SPORTS



after hours



A
F
T
E
R

T
H
E

G
A
M
E





PHOTOGRAPHY
BY
BRAY STUDIO



ENGRAVING
BY
AMERICAN
ENGRAVING AND
COLORPLATE CO.



PRINTING
BY
WING PRINTING
COMPANY

