



This yearbook may contain images, language, or other content that could be offensive to modern users. The content may be disturbing and offensive, but should be viewed within the context of that period. The material is being presented as part of a historical record and in no way reflects the values of Missouri Western State University.



EX LIBRIS



GRIFFON



1935



RIFFON

CONTENTS

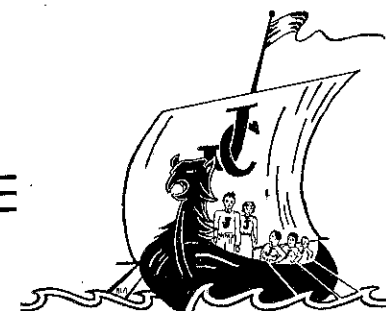
- I. School.
- II. Features.
- III. Organizations.
- IV. Athletics.

*Published by a staff
chosen from the
Sophomore Class of
St. Joseph Junior
College*

1935



THE GRIFFON'S LAIR



FOREWORD

We, the staff, present this, the fifteenth annual publication of the Griffon. Contained herein are the personalities and events of the school year 1934-35. It is only fitting that the Griffon itself should serve as our theme, symbolizing, as it does, invincibility. We sincerely hope that this book will serve to perpetuate those ambitions, achievements, and joys in college life for which our school stands.



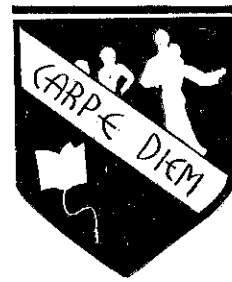
Editor, Rodney McAuliffe Business Manager, Arthur Goldberg



DEDICATION

To our sage counsellor, and sympathetic advisor, who has in a large part made possible this publication, whose fineness of character has inspired us to keep our eyes forever fixed on the goals of World Fellowship and intelligent Christian Living---

To Miss Nelle Blum, Dean of St. Joseph Junior College, we affectionately dedicate this, the Griffon for 1935.



● THE SCHOOL



MISS NELLE E. BLUM
Dean St. Joseph Junior College



I. E. STUTSMAN
Superintendent of Schools



RAYMOND S. ELLIOTT, Dean of Men



RADIANCE ZOLLINGER, Registrar

Board of Education

- JOHN W. PATT
President
- MRS. CLIFFORD B. ADAMS
Vice-President
- D. E. CURTIN
- DR. H. W. CARLE
- G. D. BERRY
- MRS. TRUE DAVIS

CLARA ALBRECHT
Department of Physical Education. B. S.,
University of Missouri.

NEILE BLUM
Department of Philosophy and Education.
A. B., Oklahoma University. A. M., Colum-
bia University.

HELEN BULLARD BROWN
Department of Modern Languages. A. B.,
University of New Mexico. A. M., Univer-
sity of Wisconsin. National University of
Mexico, Mexico City, Mexico.

MABEL G. COOK
Department of Home Education. A. B.,
Maryville State Teachers' College. A. M.,
Columbia University.

HASBROUCK DELAMETER, M. D.
Department of Hygiene.

ELBERT DONAHUE
Department of Sociology. A. B., M. A.,
St. Louis University. University of South-
ern California.

RAYMOND ELLIOTT
Department of Music. B. M., University
of Kansas. North Texas State Teachers'
College. Graduate work at Kansas and New
York Universities.

AMY DOROTHY EWAN
B. S., Central Missouri State Teachers'
College, Warrensburg, Mo. M. A., Teachers'
College, Columbia University.

MARY E. B. NEELY
Department of Modern Languages. A. B.,
Middlebury College. A. M., University of
Wisconsin. Sorbonne, Paris, France. A. A.,
Vassar College.

FRANK POPPLEWELL
A. B., A. M., Kansas State Teachers'
College. History Fellowship, 1930-31. Grad-
uate Work at Missouri University.



SCHOOL LABS



ORREL MARIE ANDREWS
Department of Biological Sciences. A. B.,
Wichita University. A. M., University of
Kansas.

G. H. DUERKSEN
Department of Chemistry. A. B., Tabor
College. B. S., Southwestern Teachers' Col-
lege of Oklahoma. A. M., Kansas University.

MARY ROBINSON
Department of Psychology. A. B., Univer-
sity of Michigan. A. M., Washington Uni-
versity. Graduate Work at Chicago Univer-
sity.

GRANT L. PISTORIUS
Department of Physics. B. S., Kansas
State Teachers' College. A. M., University
of Kansas.

EDITH MOSS RHOADES
Department of English. A. B., Wellesley
College. A. M., University of Wisconsin.

HESTER ROBINSON
Department of Art. A. B., University of
Michigan. M. A., University of Chicago.
California School of Arts and Crafts.

SAMUEL T. SANDERS
Department of Mathematics. A. B., M. S.,
Louisiana State University.

R. E. STONE
Department of Social Sciences. A. B.,
University of Idaho. A. M., University of
Washington. Columbia University. Univer-
sity of California.

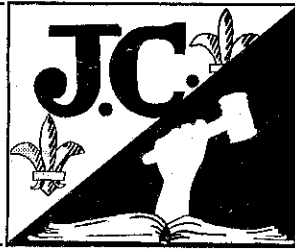
JEAN TROWBRIDGE
Librarian. University of Wisconsin Li-
brary School.

B. O. WILLHITE
Engineering Drawing. B. S., Warrens-
burg, Missouri State Teachers' College.
A. M., University of Missouri.

EMILY WYATT
Department of English. A. B., University
of Missouri. A. M., Middlebury College.



STUDENT GOVERNMENT



THE SENATE

The members of the Student Senate are selected from both the Freshman and Sophomore classes. They must rank high in both scholarship and personal conduct. It is the duty of this body to provide a link in the long chain of relations between the administration and student body. It is through this group that the students are given self-government and self-discipline that a college group warrants.

All transactions concerning the student body must be approved by the Senate. It is their duty to appoint committees to serve on extra-curricular activities such as "Prowl Day," and the school dances. In addition, the Senate helps select the staff for the various school publications, as well as makes laws pertaining to the student body, and upholds the ideals and traditions of the school.



[Page Ten]

SENATE

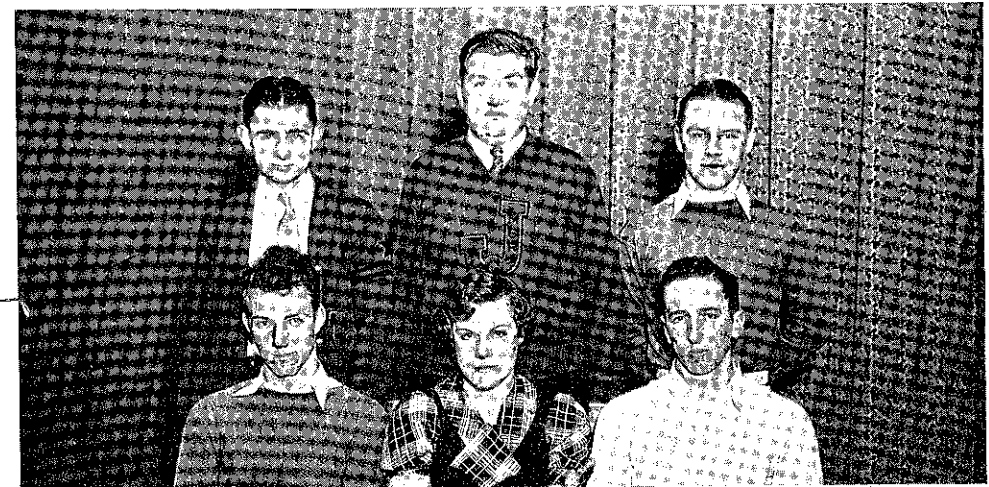


Back Row, Standing—Elizabeth Townsend, Jerome Kintner, Ted Bloom, Mary K. Badger, Bruce Cottier, Emerson Carpenter, Julia Greenfield.
Front Row, Seated—John Minor, Charles Fore, Elizabeth Dahlenburg, Frank Wright, Keith Compton.

ATHLETIC COUNCIL

This group is composed of representatives from the various athletic organizations of the college, supplemented by a member of the Senate.

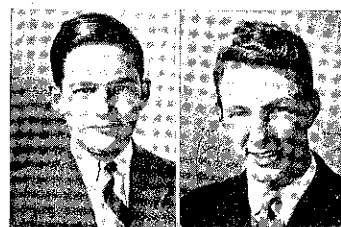
The members chosen this year were: Lloyd Thomann, John Minor, Charles Fore, Keith Compton, Verona Come, and Glen Welsh. These people represent basketball, intramurals, Senate, minor sports, girls' athletics, and track, respectively.



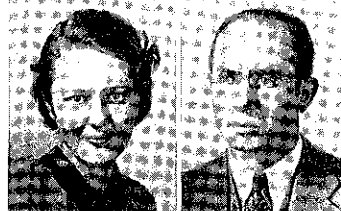
Bottom Picture, Back Row, Standing—Lloyd Thomann, John Minor, Charles Fore.
Front Row, Seated—Keith Compton, Verona Come, Glen Welsh.

[Page Eleven]

THE SOPHOMORE CLASS



JEROME KINTNER
President, Sophomore Class; Sec. Treas., Freshman Class; Queen Coronation, '34; Senate; International Relations Club.



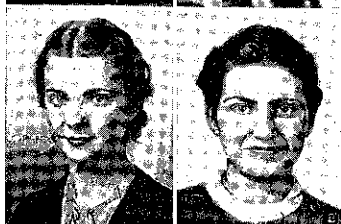
ELIZABETH TOWNSEND
Dramatic Club; "Michael and Mary"; Advertising Press Club Convocation; Senate; Sec. Treas., Sophomore Class; Art Editor, Griffon News, '34; Mace, '33, '34; Art Editor, Penny Whistles, '34; Advertising Manager, Griffon, '35.



FARNOL ADLER
Basketball, '34, '35; "J" Club, Treas.; "J" Club Dance Committee; Press Club; Griffon News; German Club.



MARY CATHERINE BADGER
Dramatic Club; "Michael and Mary." Student Director; Senate; German Club; "Altruism"; "Mary, Mary, Quite Contrary"; "J" Club Queen; Mace.



BOB BIGHAM
Phi Theta Kappa, Pres.; French Club, Pres.; "Mary, Mary, Quite Contrary"; "Altruism"; Chairman of Queen Coronation, '34; French Club Convocation; International Relations Club; Spanish Club; Dramatic Club; Prowl Day Committee; Sophomore Editor, Griffon; "College Footlights."

KEITH COMPTON
Boot and Spur, Pres.; Dramatic Club; Golf Team; "Mary, Mary, Quite Contrary"; "Michael and Mary."

RAYMOND ELLIOTT
Class Sponsor

RETTA LU ALEXANDER
Science Club, Pres.; Art Editor, Griffon and Griffon News; Press Club; Boot and Spur; G. A. A.

GRETCHEN BERGHOFF
A Cappella Chorus; Mixed Chorus; "Seven Last Words."

HARRIET BLUMENFELD
French Club; Griffon News; Penny Whistles.

VIRGINIA BONE
Natural Science Club; Boot and Spur; Queen Attendant; Volleyball Captain; Basketball.

BERNICE BRADLEY
Teachers' Guild; J. C. Y. W.



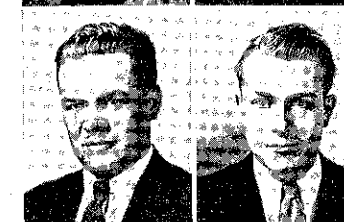
MARTHA BRISTOL
Executive Committee, Penny Whistles, '34, '35.

DOROTHY BROWN
Dramatic Club, Pres.; French Club; Cheshire Cheese; "Michael and Mary"; "The Twelve-Pound Look"; "Mary, Mary, Quite Contrary"; Mace, '34, '35; Penny Whistles.



NORMAN CARTER
Spanish Club; Organization Co-Editor, Griffon.

JACK CHANEY
Dramatic Club; "Altruism"; "Twelve-Pound Look"; All School Play Committee.



ROSE COLLOFF
Organization Co-Editor of Griffon; German Club; French Club; Spanish Club.

VERONA COME
Girls' Sports Editor, Griffon; G. A. A., Pres. Athletic Council; Teachers' Guild; Girls' Basketball Manager.



MARY ELIZABETH COOPER
Dramatic Club; "Michael and Mary"; "Altruism."

LOIS COY
"Boot and Spur."



JOSEPHINE CUMMINGS
Spanish Club.

ELIZABETH DAHLENBURG
Student Body Secretary; Senate; Mace, '34, '35; German Club; Natural Science Club.



VIRGINIA DEDRICH
A Cappella Chorus; Mixed Chorus; Teachers' Guild; "Seven Last Words".

FRANCES DENEEN
Teachers' Guild.





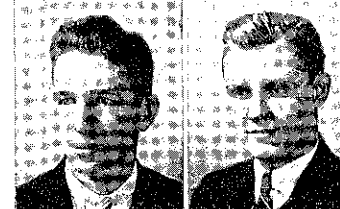
RUTH ANN ELISCU
Cheshire Cheese, Pres.;
Press Club, Treas.;
French Club, '34; Press
Club Convocation; Liter-
ary Editor, Griffon News;
Editor, Penny Whistles.



ALICE FLOREA
J. C. Y. W.; Girls'
Sports Editor, Griffon
News; G. A. A.



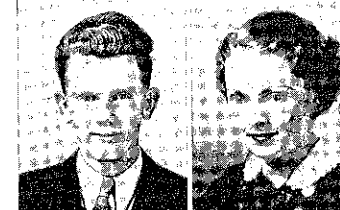
CHARLES FORE
Student President; Sen-
ate; Mace; International
Relations Club, Vice-
Pres.; Cheerleader; Track,
'34, '35; Business Com-
mittee, All School Play;
Swimming Team.



ROBERT GILES
Spanish Club.



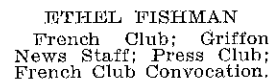
CORBIN GOFF
Cheerleader; Track; A
Cappella Chorus; Mixed
Chorus; "Seven Last
Words."



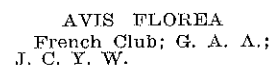
HOWARD GRAY
"J" Club, Pres.; Bas-
ketball Manager, '34, '35;
International Relations
Club; "Michael and
Mary."



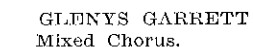
MOILA GREER
Teachers' Guild.



ETHEL FISHMAN
French Club; Griffon
News Staff; Press Club;
French Club Convocation.



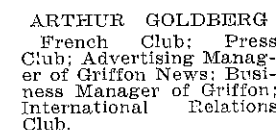
AVIS FLOREA
French Club; G. A. A.;
J. C. Y. W.



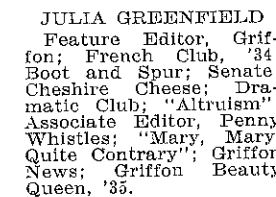
GLENYS GARRETT
Mixed Chorus.



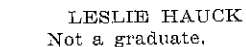
GEORGE GLIDEWELL



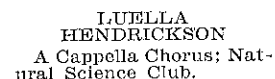
ARTHUR GOLDBERG
French Club; Press
Club; Advertising Manag-
er of Griffon News; Busi-
ness Manager of Griffon;
International Relations
Club.



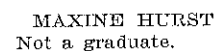
JULIA GREENFIELD
Feature Editor, Grif-
fon; French Club, '34;
Boot and Spur; Senate;
Cheshire Cheese; Dra-
matic Club; "Altruism";
Associate Editor, Penny
Whistles; "Mary, Mary,
Quite Contrary"; Griffon
News; Griffon Beauty
Queen, '35.



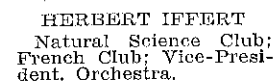
LESLIE HAUCK
Not a graduate.



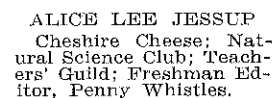
LUELLA
HENDRICKSON
A Cappella Chorus; Nat-
ural Science Club.



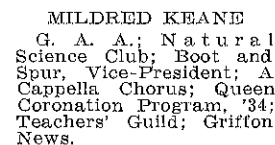
MAXINE HURST
Not a graduate.



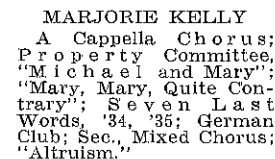
HERBERT IFFERT
Natural Science Club;
French Club; Vice-Pres-
ident, Orchestra.



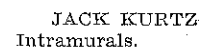
ALICE LEE JESSUP
Cheshire Cheese; Nat-
ural Science Club; Teach-
ers' Guild; Freshman Ed-
itor, Penny Whistles.



MILDRED KEANE
G. A. A.; Natural
Science Club; Boot and
Spur, Vice-President; A
Cappella Chorus; Queen
Coronation Program, '34;
Teachers' Guild; Griffon
News.



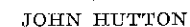
MARJORIE KELLY
A Cappella Chorus;
Property Committee;
"Michael and Mary";
"Mary, Mary, Quite Con-
trary"; Seven Last
Words, '34, '35; German
Club; Sec., Mixed Chorus;
"Altruism."



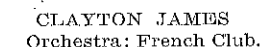
JACK KURTZ
Intramurals.



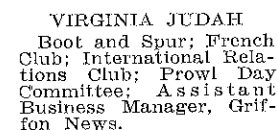
RACHEL HOCHMAN



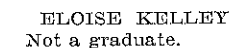
JOHN HUTTON



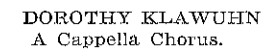
CLAYTON JAMES
Orchestra; French Club.



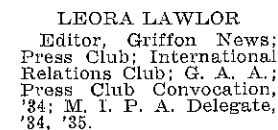
VIRGINIA JUDAH
Boot and Spur; French
Club; International Rela-
tions Club; Prowl Day
Committee; Assistant
Business Manager, Grif-
fon News.



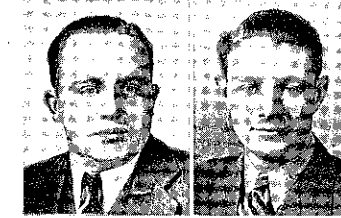
ELOISE KELLEY
Not a graduate.



DOROTHY KLAUHN
A Cappella Chorus.



LEORA LAWLOR
Editor, Griffon News;
Press Club; International
Relations Club; G. A. A.;
Press Club Convocation,
'34; M. I. P. A. Delegate,
'34, '35.

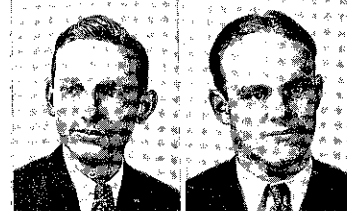




FRANK LEIBOLD
Mixed Chorus.



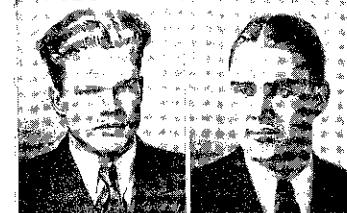
JUNIOR LIBEL



EDWARD MARTI
Phi Theta Kappa; Spanish Club.



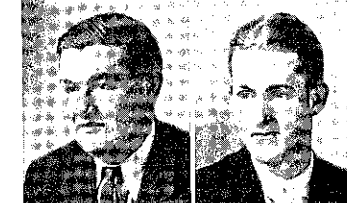
HARRISON MAXWELL
French Club; Spanish Club; Phi Theta Kappa; A Cappella Chorus; Pres. Mixed Chorus; "Seven Last Words".



RUSSEL McCAMY
Track, '34, '35; Co-captain Track, '35; "J" Club; Intramurals.



FLORENCE ANN McININCH
French Club, '34.



JOHN MINOR
Dramatic Club; International Relations Club; "J" Club; Assistant Track Manager, '34; Intramural Manager, '35; Senate; Griffon News; Sports Editor, Griffon; "Michael and Mary"; "Mary, Mary, Quite Contrary"; "Altruism"; Medicine Show.

MORTON LEIBOWITZ
International Relations Club; Spanish Club; Circulation Manager; Griffon; Senate, '34; Intramurals.

JULIA LUCAS

DON MARSHALL
Basketball, '34, '35; Track, '34, '35; "J" Club; Intramurals; Varsity Baseball, '34.

RODNEY McAULIFFE
Editor-in-Chief, Griffon; Spanish Club, '34, '35; Sports Editor, Griffon News; M. I. P. A. Delegate, '34, '35; International Relations Club; Penny Whistles; College "Y" Club; Cheshire Cheese; Intramurals; Varsity Baseball, '34; Beauty Queen Board; College "Y", Convocation; "Y" Club, Faculty Tea Committee; "Altruism."

BILL McCALLUM
French Club; Dramatic Club; A Cappella Chorus; French Club Convocation; "Mary, Mary, Quite Contrary"; "Michael and Mary"; "Altruism"; "Seven Last Words."

ORVILLE McVAY
Spanish Club; Natural Science Club.

WILLIAM MORGAN
Mixed Chorus; Stage Crew.

MILDRED MOORE

Phi Theta Kappa, Sec.; J. C. Y. W., Pres.; Natural Science Club, Sec.; A Cappella Chorus; Mixed Chorus; Teachers' Guild; "Seven Last Words."

LOUISE NOELLSCH

Natural Science Club; Teachers' Guild; Mixed Chorus.

WILLIAM PEACOCK

Psychology Association, Pres.; International Relations Club; Chairman, Prowl Day Committee, '34; Griffon News; Financial Manager, Basketball. (Not a graduate.)

CAROL POPE

MARGARET RANKIN

EMMETT RHODES

LEONARD ROTHSTEIN

Basketball '34, '35; "J" Club; German Club; Intramural Basketball Manager.

VIRGINIA NELSON

Spanish Club; Ping Pong Tournament.

LOUISE PANIGOT

Phi Theta Kappa; Spanish Club; Natural Science Club; J. C. Y. W.; Literary Editor, Griffon; Cheshire Cheese; Griffon News; Exposition Editor, Penny Whistles.

CARL PERRY

Senate; Natural Science Club.

DOROTHY POWELL

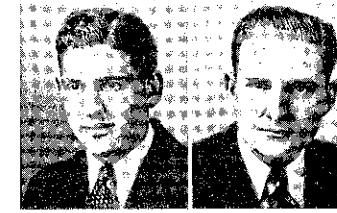
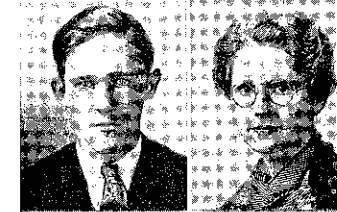
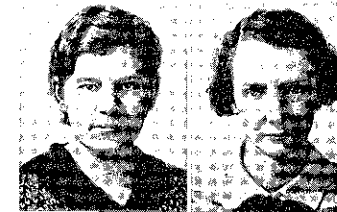
Natural Science Club; A Cappella Chorus; J. C. Y. W.; "Seven Last Words."

GEORGE REES

DOROTHY ROBNETT
French Club; Natural Science Club; Boot and Spur; A Cappella Chorus; G. A. A.; Press Club Convocation.

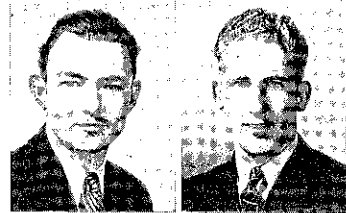
NORMAN SCHREIBER

Phi Theta Kappa.





MARY SHIKLES
French Club; Boot and Spur; Mixed Chorus; Orchestra; Griffon Beauty Queen.



VERN SNIDER
(Not a graduate.)



VELMA STETTER
International Relations Club; Natural Science Club; News Editor, Griffon News; Boot and Spur; Press Club; Ping Pong Manager; G. A. A.



MAUREEN TAULTY
Exchange Editor, Griffon News; Press Club; Volley Ball; Basketball; G. A. A.; International Relations Club.



JACK TOPPING
"J" Club; Griffon News; Golf Team.



FRANCES VINCENT
Dramatic Club; Mixed Chorus; Christmas Program; "Seven Last Words"; "Mary, Mary, Quite Contrary."



DOROTHY WELSH
Phi Theta Kappa, Vice-President; Chesire Cheese; Associate Editor, Griffon; President, Press Club; Feature Editor, Griffon News; Press Club Convocation, '34; International Relations Club; Penny Whistles; Spanish Club, President.

MARY KATHRYN SMITH
French Club; Queen Attendant, '34.

J. R. STAFFORD
Dramatic Club; Spanish Club; "Altruism"; College "Y" Club; Intramurals; Horseshoe Champion.

HAROLD TALIAFERRO
Phi Theta Kappa; Press Club; International Relations Club; Press Club; Business Manager, Griffon News; "J" Club; Tennis Captain.

LLOYD THOMANN
Basketball, '34, '35; Captain, '35; Natural Science Club; "J" Club; Intramurals; Mace.

ELIZABETH UTZ

EARL WASSERMAN
International Relations Club; Natural Science Club; General Chairman, "College Footlights."

JEANETTE WESTPHELING
Boot and Spur; Griffon News; Mixed Chorus; "Seven Last Words."

STANLEY WIENSHIENK
Natural Science Club; International Relations Club.

JOHN WILLMAN
Phi Theta Kappa.

FRANK WRIGHT
Vice-President, Student Body; International Relations Club; Senate.

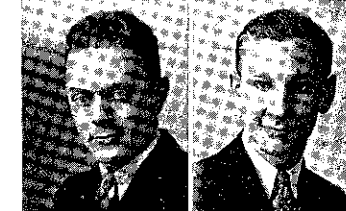
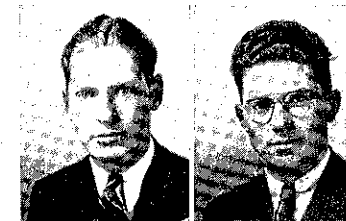
MARGARET LIBBE

KENNETH WILBY
Mixed Chorus; "Seven Last Words."

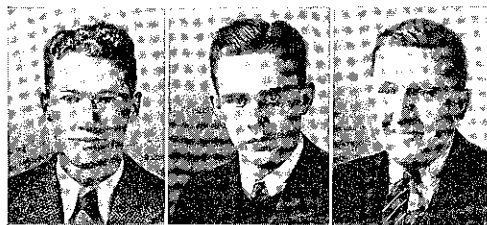
FRANCES WILL
Mixed Chorus; Spanish Club; Griffon Beauty Queen; "Seven Last Words."

HERMAN LIBBE

LILA CAMPBELL



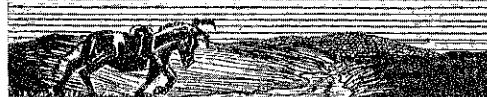
THE FRESHMAN CLASS



LAWRENCE KIRK
President

WILBURT KLAMM
Vice-Pres.

MAX WITT
Sec.-Treas.



MARGARET ADAMS

MARY KATHRYN ADAMSON

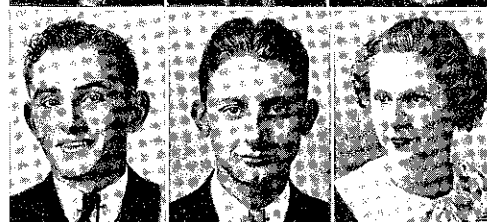
WILLIAM ALBRIGHT



BERNEIL ANDREWS

NORMAN BAILEY

MEGARIE BARFIELD



NORTON BEDFORD

H. C. BEHRENDT

SARAH BENDER



BILL BIRD

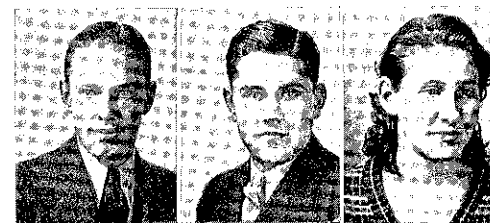
ESTELLE BLANAR

TED BLOOM

WALTER BOWEN

JACK BOWLING

MILDRED BRINGMAN



CLARENCE BROWN

ELIZABETH BRUBAKER

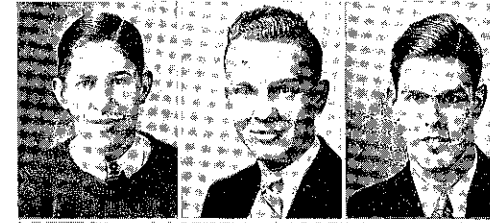
ABRAHAM BURSTEIN



MILTON COWGILL

EMERSON CARPENTER

VAL CAVBY



JAMES CLARK

WILLIAM CORRINGTON

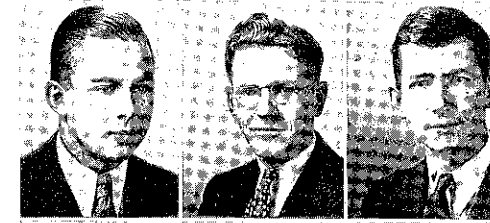
THORA SUE DEVALL



JOHN DOBLER

WILBUR DUFFENDACK

BURTON DUNBAR



RODNEY ERICKSON

REGINA ESTEP

HUBERT FITCH



FRANK FITZPATRICK

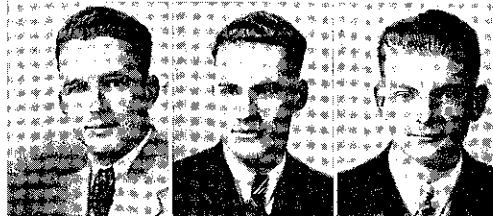
JOHN FOGARTY

MARY ELIZABETH FUHRMAN

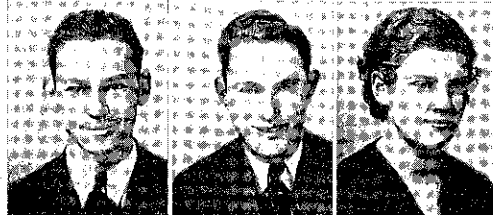




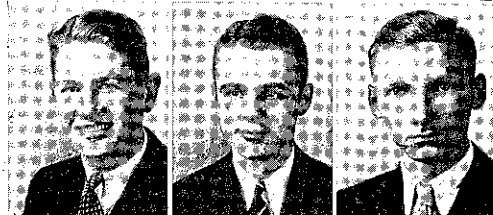
LORENE GOLLEDGE
ERNESTINE GARD
VIRGINIA GIBSON



RICHARD GILES
LEE GOMEL
CHARLES GRABLE



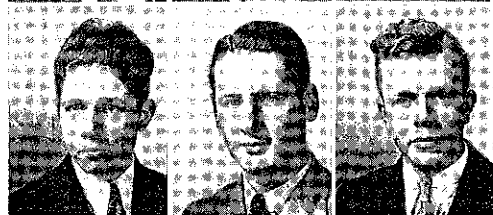
GWYN GREEN
PAUL GROWNEX
LOUISE GUENTHER



NEIL GUFFEY
HAL HALSTED
WALTER HORCKER



HELEN HULL
HARRIET HUTCHINSON
VEVA HELTZEL



HERMAN HELTZEL
ALLEN HEFLIN
RICHARD KARRASCH



WILLIAM KILEY
GERALDINE KREBS
ROBERT LACALLI

BURTON LARSON
ROSALIE LAZRIOWICH
HARRY LECHTMAN



MARGARET LOWE
JACK LUSH
BOB McKISSICK



LLOYD McPHAIL
DALE MEANS
ELEANOR MEEK



RUTH MEYER
LENA CATHRIN MILLER
CORWIN MOORE



BILLY MOORE
GERALDINE MOSKAU
MARGARET MUIR



ROBERT MUIR
JAMES MURRAY
RUTH MYERS



SYDNEY NAIDORF
HERBERT NECHEMIAS
BILLY NEUDORFF





ELAINE NEUDORFF
CLEO NOLAND
DOROTHY ORTH



JULIET OSBORN
RUHAMAH PERET
EVELYN PIPER



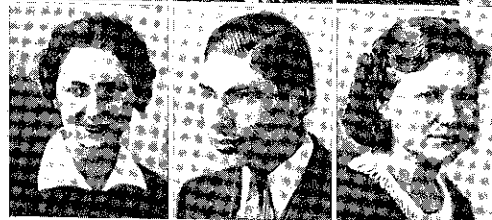
ALTHA POLK
WHITNEY POTTER
MARGARET REDDINGTON



JOHN RUCKER
GWEN ROWDEN
ANNA LOUISE ROSEN



LUCILLE RUBY
GORDON RUBY
CARLETON SCHIRMER



VIRGINIA SCHWARTZ
ELLSWORTH SHAFFER
MARY SHAW



MARGUERITE SHERIDAN
MARCELENE SHIPMAN
GLENN SMITH

VIRGINIA SMYTH
ELAYNE SPRINGER
VIRGINIA TALBOTT



JACK TAPEE
MADONNA TIBBS
GARNET THOMAS



IRIS I. THOMPSON
VIRGINIA THOMPSON
FRED THUMAN



GRACE OPAL VOGELMAN
FLORENCE WALL
EDWARD WEGENBK

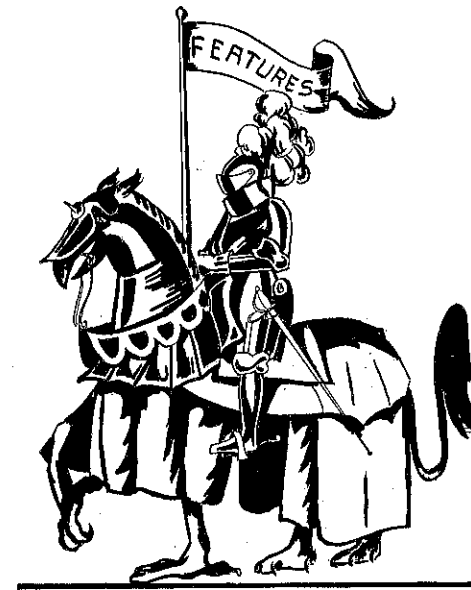


GLEN WELSH
LOUISE WESTPHELING
DONALD WHITCRAFT

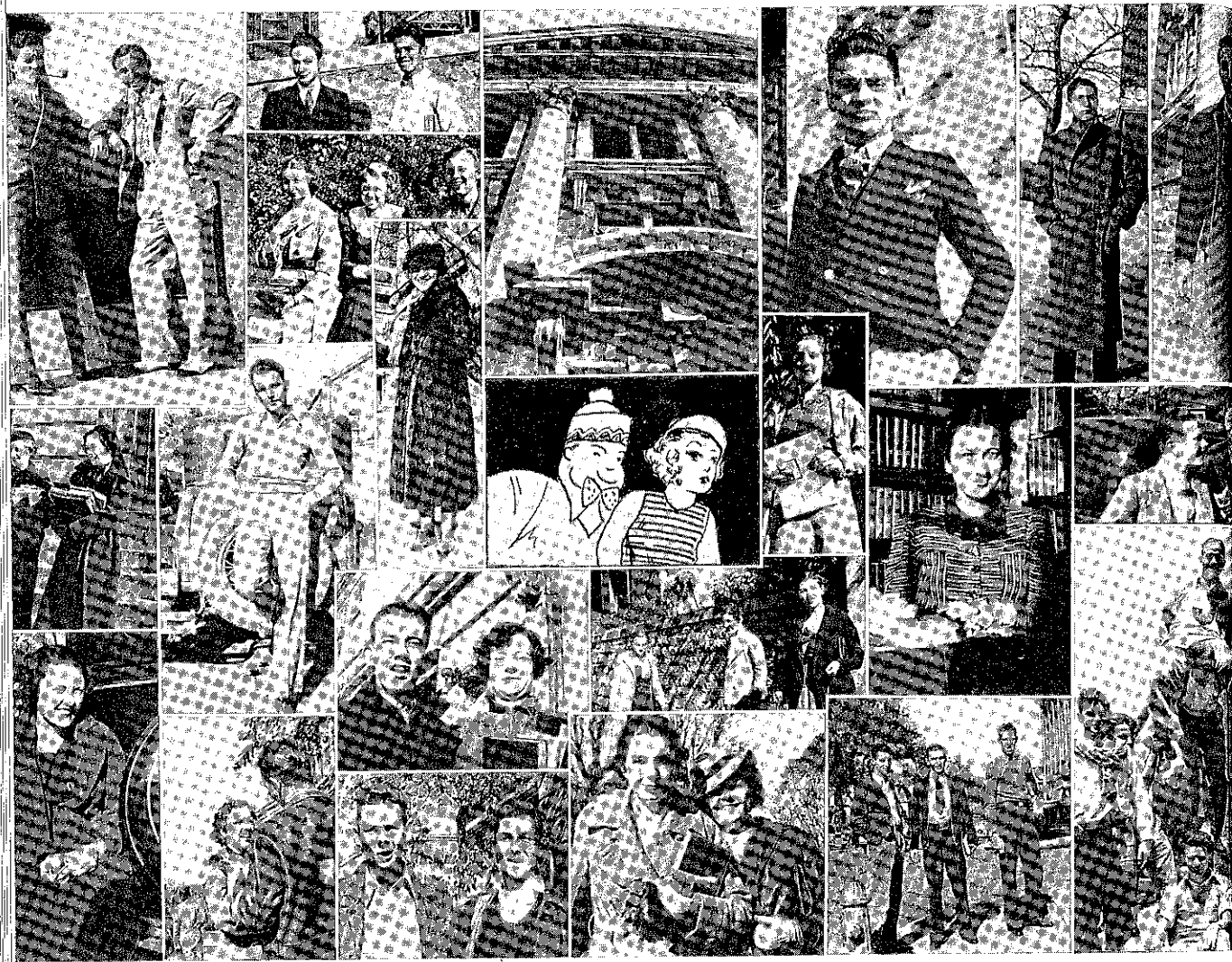


ANNALEE WILDBAHN
MARION WILSON
HOWARD ZELIFF





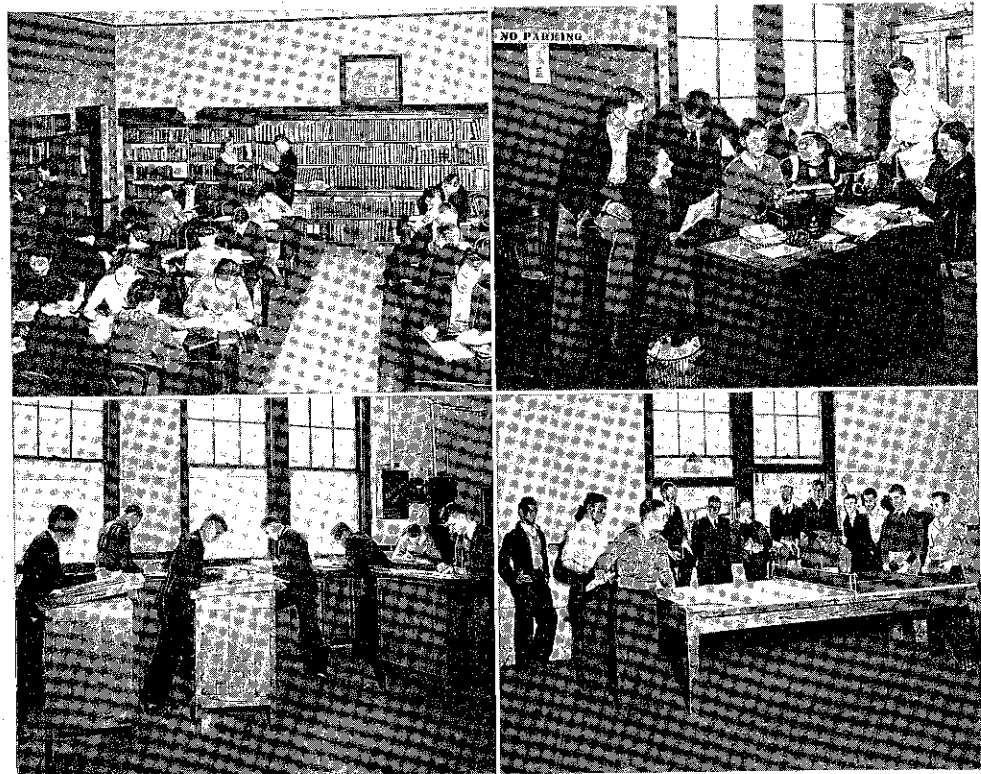
Within the following pages we have tried to preserve those things about the campus which we consider worthy of being classed as a representative feature of Junior College life . . . students without their company manners, college friendships, workers and playboys, and our Griffon queens.



Noon hour—the Jellys' paradise
 "Rats, Lice, and History"
 Plenty of inseparables around school
 Boys will be boys
 We do have good looking men
 We smile sweetly—if it's at a camera
 Don't be fooled by the books



Between classes
 Up in the air over nothing
 Massive columns and a head
 Twenty below
 Waitin' for a street car ?
 Just seventeen
 Suave
 News Room Industry
 Cute
 Use your thumb, lady
 Goin' home ?
 Oh! for a bee-bee gun
 In the spring



LIBRARY

Most popular room in college . .
 Quiet, please
 Two newspapers every morning .
 So very studious

NEWS ROOM

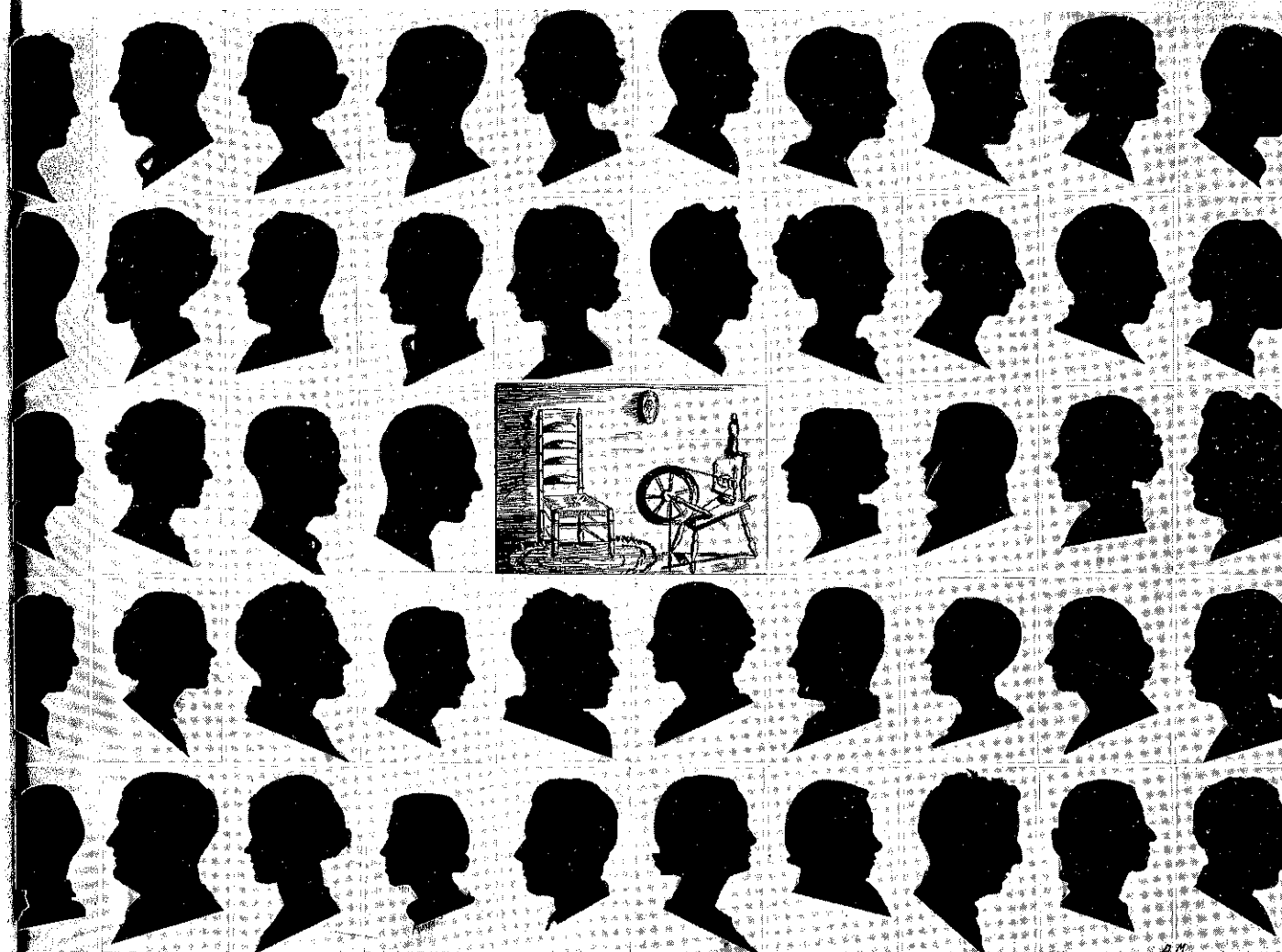
Loafers
 Griffon workers and—players . .
 They look busy, but
 Such bridge games

ENGINEERING ROOM

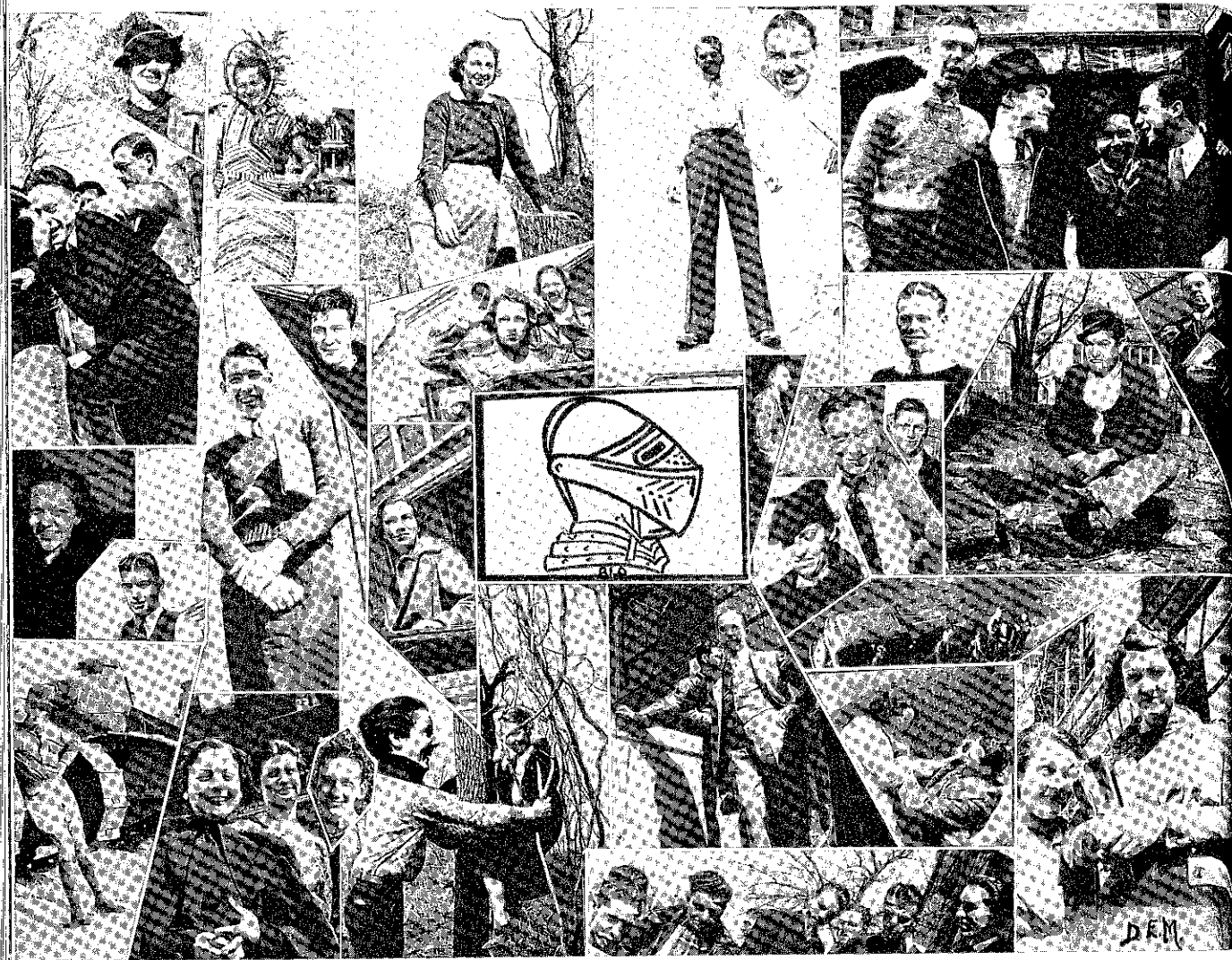
Master Builders
 Mechanical Drawing
 What a stance!

PING PONG

Chief J. C. intramural
 What a game
 Don't lose that pose
 The audience looks interested . .



Silhouettes of Who's Who in J. C.



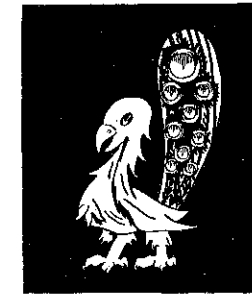
Tennis Tillie
 King Kong's Bewildering Offspring
 Block and Blockheads
 Nosey Frank
 Rosebud
 Nothing need be said about Minor
 Pacifist—Yeah ?
 Smiles
 Watching—what ?
 Rough house
 Expressions deluxe



Shrinking Violet
 Camera Conscious
 La Belle Ethel
 Mmmmmmmmm
 Three Blind Mice
 Me! Cooper
 Hold everything !
 Posed especially
 Products of Missouri
 Muggers
 That tooth paste smile
 What! No roller skates ?

Acknowledgment

We wish to acknowledge and express our appreciation to the judge of the 1935 Griffon Queens, Mr. Rositer Howard, Dean and Director of the Kansas City Art Institute.



BEAUTY



FRANCES WILL



JULIA GREENFIELD



MARY SHIKLÈS



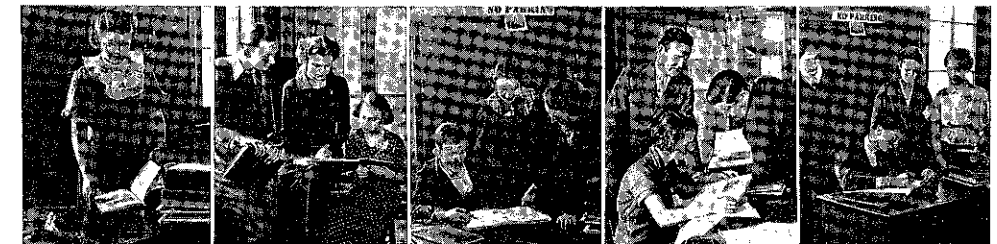
THE GRIFFON STAFF



Back Row, Standing— Louise Westpheling, Circulation; Verona Come, Girls' Sports; Louise Panigot, Literary Editor; James Murray, Sports; Dale Means, Snapshot Editor; Dorothy Welsh, Associate Editor; Harry Lechtman, Advertising.
Front Row, Seated—John Minor, Sports Editor; Julia Greenfield, Feature Editor; Rodney McAuliffe, Editor-in-Chief; Bob Bigham, Class Editor; Retta Lu Alexander, Art Editor; Arthur Goldberg, Business Manager.

At the beginning of each school year the Senate submits to the administration their choice for the Editor and Business Manager of the year-book. The Editor and Business Manager in turn choose their assistants to serve with them in publishing The Griffon.

It is the duty of this staff to arrange a budget and let all contracts for outside work that is to be done on the book. This work entails many conferences with the engraver, printer, and photographer before actual work can be started. The editor of each section of the book is given a layout with which to work. He is responsible for all work in that section of the book.



GRIFFON NEWS STAFF



Back Row, Standing—Grace Opal Vogelman, Arthur Goldberg, James Murray, John Minor, Harold Tallaferro.
 Middle Row—Louise Westpheling, Rodney Erickson, Maureen Talty, Harry Lechtman, Estelle Blahar.
 Front Row—Farnol Adler, Ruth Ann Eliscu, Louise Guenther, Leora Lawlor, Editor-in-Chief; Dorothy Welsh, Rodney McAuliffe, Retta Lu Alexander.

The Griffon News is published by the student body ten times during the year. Primarily it is the chief organ of student opinion and the medium by which all news of importance is presented to the student body. In addition to providing an accurate account of events at Junior College, this monthly publication presents, through its editorials and various columns, comments on school affairs, thus providing an outlet for student thought.

The publishing of the paper is under the direction of a staff chosen for their ability and interest in journalism. One member of the faculty serves as advisor to the staff and at the close of each school year joins with them in picking a staff for the coming year.

The Griffon News holds a membership in the Missouri Interscholastic Press Association and competes in the National Press Association contest, last year, winning a first class honor rating. It was given first place in the annual state contest sponsored by the University of Missouri last year.

EDITORS AND PUBLICATIONS



Back Row—Rodney McAuliffe, Arthur Goldberg, Dorothy Welsh.
 Front Row—James Murray, Leora Lawlor, Ruth Ann Eliscu, Julia Greenfield, Rodney Erickson.

Sponsored by Cheshire Cheese, Penny Whistles in 1934 and '35 scored first honors among the literary magazines of Missouri Junior Colleges. The material found in Penny Whistles is the work of the students themselves. Many types of writing are included in the magazine; short stories, poetry, drama, sketches, description, and expository articles. It is the hope of the editor, Ruth Ann Eliscu, and her associate, Julia Greenfield, that the 1935 Penny Whistles will be of the same high caliber as that of last year. Penny Whistles is published in May and is obtained by the school activity ticket.

The Griffon News also copped honors in the annual press meet of 1934. It was judged the best all-around Junior College newspaper. The editor of the 1935 Griffon News is Leora Lawlor, assisted by James Murray, Margaret Adams, and a host of reporters. Despite the fact that Junior College does not have a journalism department, the Griffon News is unfailingly published once a month. It is the Griffon News that welds the students in a closer bond of fellowship.

The Griffon year-book is a compilation of all the events of the year in Junior College. It is the medium through which the achievements and personalities of each class are preserved. The loss of this publication was not fully appreciated until it failed to appear last year. Its "come back" was assured by the untiring efforts of the Editor, Rodney McAuliffe and his enthusiastic assistants, Arthur Goldberg, Business Manager, Dorothy Welsh, Associate Editor, Julia Greenfield, Feature Editor, and Retta Lu Alexander, Art Editor.

A year-book is essential to school life and this year's staff hopes that their work will serve to spur future classes on to continued and successful publishing of this book.

CHESHIRE CHEESE



Back Row—Dorothy Welsh, Alice Lee Jessup, Louise Panigot.
Front Row—Harriet Hutchinson, Paul Hesse, Ruth Ann Eliscu, Julia Greenfield.

CHESHIRE CHEESE

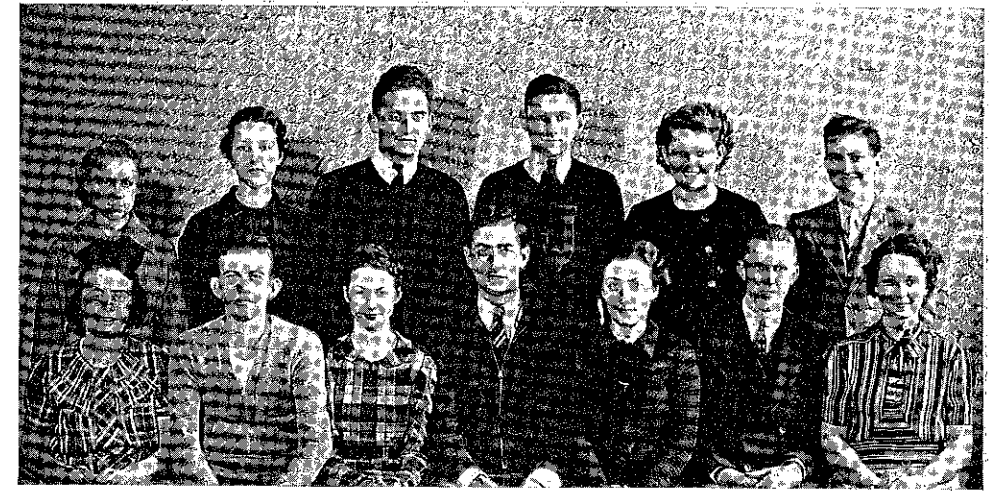
PRESIDENTRUTH ANN ELISCU
ADVISORY BOARD.....DOROTHY BROWN, DOROTHY WELSH

Membership in the club is limited to fifteen. To be eligible a student must be making an average of M in all subjects excepting English courses, in which he must average S or above. The purpose of the club is to further the interest in literature in Junior College, both in writing and reading. The bi-monthly meetings of the organization are given each time to one member who assumes charge of the program and presents some form of literature, usually contemporary, to the club members.

It is this club which sponsors the publication of the literary magazine, Penny Whistles, whose staff is chosen from its members. This year the staff expects to publish a larger magazine than any that have appeared.

In addition to these activities the members of Cheshire Cheese also play an important part in the growth of the Anne Lowe Wells Scholarship Fund, by holding regular food sales at school. All of the funds derived from these sales go into this scholarship fund.

PRESS CLUB



Back Row—Margaret Adams, Louise Westpheling, Harold Tallafarro, Farnol Adler, Retta Lou Alexander, Harry Lechtman.
Front Row—Maureen Talty, Rodney McAuliffe, Leora Lawlor, Arthur Goldberg, Ruth Ann Eliscu, James Murray, Dorothy Welsh.

PRESS CLUB

PRESIDENTDOROTHY WELSH
VICE-PRESIDENTLEORA LAWLOR,
SECRETARY-TREASURERRUTH ANN ELISCU

The Press Club is an organization composed of only those students who take an active part in the publishing of The Griffon News. The membership is limited to sixteen. The purpose of the club is to further the interest in journalism in Junior College, and to improve upon the various school publications.

Meetings are held twice a month. One is a business meeting held in the News Room, and the other is a social meeting held in the various homes of the members. The members of the staff are brought closer together through these meetings and are thus more able to work as an organized group toward the betterment of their mutual "pet," The Griffon News. Miss Mary Robinson, faculty advisor for the paper, is also the sponsor of the club.

PHI THETA KAPPA



Back Row, Standing—Mildred Moore, Iris Thompson, Louise Panigot, Dorothy Welsh, Frances Flanagan.
 Middle Row, Standing—Edward Marti, Harrison Maxwell, Bill Corrington, Max Witt, Norman Schreiber, Harold Taliaferro.
 Front Row—John Willman, Grace Opal Vogelman, Harriet Hutchinson, Helen Marie Hull, Altha Polk, Bob Bigham.

PHI THETA KAPPA

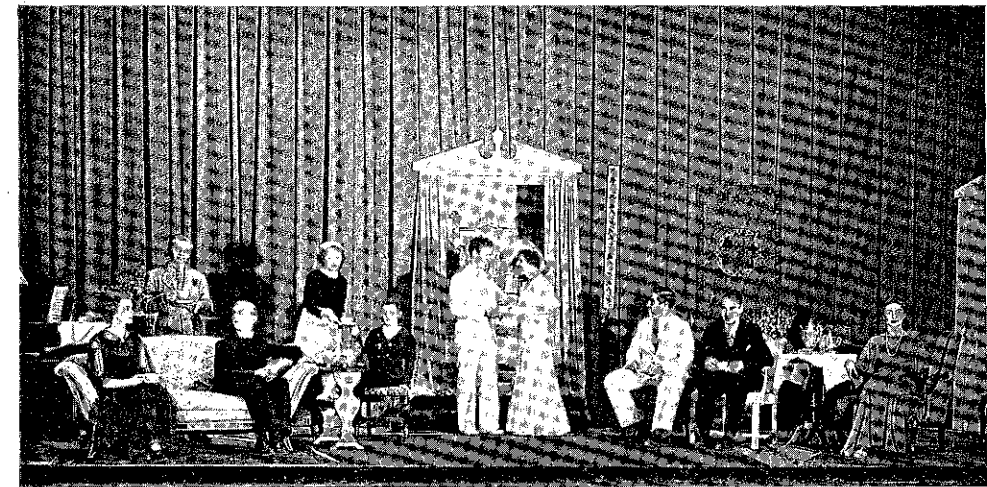
PRESIDENTBOB BIGHAM
 VICE-PRESIDENTDOROTHY WELSH
 SECRETARYMILDRED MOORE
 TREASURERHAROLD TALIAFERRO

Phi Theta Kappa is the national honorary scholastic fraternity for Junior Colleges. The chapter here at Junior College is the Kappa chapter, to which students having an average of S are eligible for membership.

With its members having such high scholastic standings, it is only natural that the primary purpose of the group is to uphold and further these same standards of scholarship. The members of the club furnish the monthly programs which are of many types, including literature, music, and original papers written on various subjects.

This year the club sent four of its members to the national convention held at Jacksonville, Texas. The information gathered at this convention was given to the student body at a special convocation and proved most entertaining.

"MARY, MARY, QUITE CONTRARY"



The highly temperamental actress, Mary Westlake, because of her penchant for getting engaged almost played havoc with the hearts of Geoffrey Consodine and his uncle, and incidentally disrupted the whole Consodine household during her two days' stay there. She kept the unsophisticated Shiela—who thought she knew all there was to know about love—torn with jealousy for fear she would lose Geoffrey to the actress who had supposedly come for the purpose of hearing Geoffrey's play, "Joan of Arc," a poetic drama in five acts. But she went off in a boat for a moonlight ride with Geoffrey's Uncle Henry, lost the oars, and let Uncle Henry develop an attack of rheumatism from the exposure. He proposed to her next day, nevertheless, and she promptly accepted him, as well as Geoffrey. But everything came out all right when she returned to town, leaving Geoffrey safe and sound for Shiela.

Dorothy Brown, in her best professional manner, captured the audience by her representation of Mary Westlake, while Keith Compton, as Geoffrey, realistically fell in love with her. Mary Catherine Badger made an adorable Shiela, while Bill McCallum, as the self-centered Uncle Henry, gave the audience many laughs. Rodney Erickson, as Hobbs the cockney business manager, contributed his share of humor. Julia Greenfield, Miss Mimms, if you please, made everyone uncomfortable every time she came into the room, while Bob Bigham gave character to an otherwise spineless preacher. Beebe, played by John Minor, and the preacher's wife, Virginia Schwartz, held up their end of the performance.

THE MACE



Back Row—Charles Fore, Mary Catherine Badger, Lloyd Thomann.
Front Row—Elizabeth Townsend, Elizabeth Dahlenburg, Dorothy Brown.

The Mace is composed of students who are outstanding in school activities. Its membership is limited to six students, three chosen the Freshman year and three the Sophomore year. Last year Dorothy Brown, Elizabeth Townsend, and Elizabeth Dahlenburg were chosen from the Freshman class. The new members from this year's Sophomore class are Mary Catherine Badger, Charles Fore, and Lloyd Thomann.

Dorothy Brown was a member of the Dramatic Club and Cheshire Cheese Club. She also was one of the chief contributors to Penny Whistles, besides being very prominent in dramatic activities here at school. Elizabeth Townsend was secretary of the Sophomore class, a member of the Press Club, Senate, Dramatic Club, art editor of Penny Whistles, and advertising manager of The Griffon. Elizabeth Dahlenburg was secretary-treasurer of the student body, member of the Senate, German Club, and Natural Science Club. Mary Catherine Badger was a member of the Dramatic Club, Senate, "J" Club Queen, German Club, and student director of "Michael and Mary." Charles Fore was president of the student body, cheerleader, member of the track team, swimming team, International Relations club, and the president of the Senate. Lloyd Thomann was captain of the basketball team, member of the "J" club, Natural Science club, and prominent in intramural sports.

NATURAL SCIENCE CLUB



Back Row, Standing—Elizabeth Dahlenburg, Alice Lee Jessup, Dorothy Powell, Luella Hendrickson.
Middle Row, Standing—Stanley Wienshienk, Herbert Iffert, Orville McVay, Earl Wasserman, Jerome Kintner.
Front Row, Seated—Lloyd Thomann, Louise Noellsch, Mildred Moore, Dorothy Robnett, Virginia Bone, Retta Lu Alexander.

NATURAL SCIENCE CLUB

PRESIDENT.....RETTA LU ALEXANDER
VICE-PRESIDENT.....EARL WASSERMAN
SECRETARYMILDRED MOORE
TREASURERLOUISE NOELLSCH

The Natural Science club is one of the most active clubs in Junior College. Membership is limited to thirty students. In order to be eligible for membership a student must average M in all subjects with the exception of his biological courses, in which he must average S or above.

The purpose of the club is two-fold. It strives to further interest in all phases of natural science and to build up and support the Childrens' Museum. It is this organization which founded the Childrens' Museum in 1927.

Each year the club sponsors a lecture given by some widely known speaker. This year they brought the well known lecturer, Dr Burris Jenkins, who spoke on the European situation. A feature of the club meetings is the waffle suppers which Miss Andrews, the club sponsor, gives for the members.

LA LUCECITA



Back Row, Standing—Ernestine Gard, Virginia Smyth, Virginia Nelson, Juliet Osborn, Annalee Wildbahn, Rose Colloff, Dorothy Robnett.
 Middle Row, Standing—Richard Giles, William Vaughn, James Murray, Norman Carter, Edward Marti, Rodney McAuliffe.
 Front Row, Seated—Josephine Cummings, Bob Bigham, Louise Panigot, Robert Giles, Bruce Cottier, Dorothy Welsh, Orville McVay, Virginia Talbott.

LA LUCECITA

PRESIDENTDOROTHY WELSH
 VICE-PRESIDENTLOUISE PANIGOT
 SECRETARY-TREASURERORVILLE McVAY

This club is the medium through which the students of Spanish may become better acquainted with the language which they are studying. All conversation at the meetings must be carried on in Spanish, as well as the games played and songs sung. For it is the purpose of the club to better acquaint its members with the language, and this can be no better accomplished than through actual conversation.

Membership is limited to second year students and second semester students having an average of S. The warmth and courtesy found in Spain are to be found in equal amounts in this club.

For the past four years La Lucecita has supplied a family from Old Mexico with provisions, food, clothing, Thanksgiving and Christmas baskets, and seeds for the spring garden. Each year the club holds its annual picnic, in honor of its sponsor, Miss Brown.

LA CERCLE FRANCAIS



Back Row, Standing—Mary Shikles, Virginia Judah, Orville Dawson, Rodney Erickson, Ethel Fishman, Harriet Blumenfeld.
 Middle Row, Standing—Bob Bigham, Clayton James, Arthur Goldberg, Hubert Fitch, Harrison Maxwell.
 Front Row, Seated, Avis Florea, Harriet Hutchinson, Bill McCallum, Altha Polk, Florence Wall.

LE CERCLE FRANCAIS

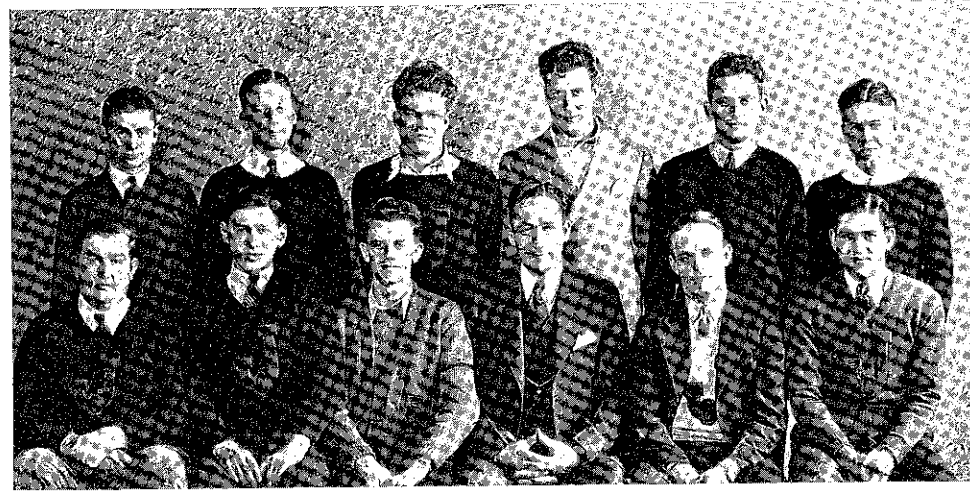
PRESIDENTBOB BIGHAM
 VICE-PRESIDENTCLAYTON JAMES
 SECRETARY-TREASURERRODNEY ERICKSON

Le Cercle Francais is a club devoted to furthering the interest of the students of French in Junior College. Its membership is limited to second year students and to those of the second semester class who have an average of S in French.

The activities of the club include the study of French drama, literature, poetry. All conversation is carried on entirely in French. The various members also carry on correspondence with students in France. The letters are read and greatly enjoyed at the meetings. Plays are given by the club members portraying French life.

Each Christmas the club prepares a basket of food, clothing, and toys, for a French family in whom it has become interested. Miss Neely's many years in France and her enthusiasm lend much toward the success of the group

THE "J" CLUB



Back Row, Standing—Lloyd Thomann, Jack Morton, Russell McCamy, Frank Kiefer, Harold Talaferro, Jack Topping.
Front Row Seated—John Minor, Farnol Adler, Howard Gray, Coach Donahue, Don Marshall, Leonard Rothstein.

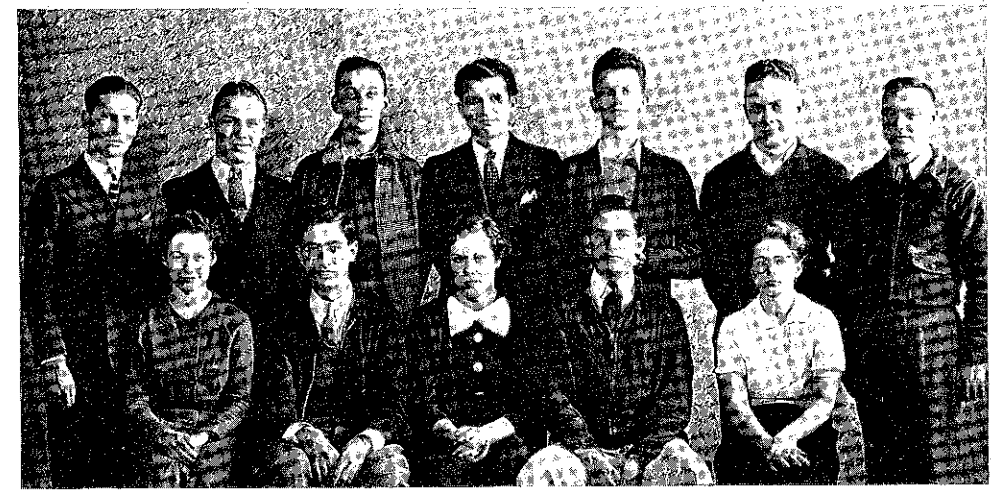
"J" CLUB

PRESIDENT HOWARD GRAY
VICE-PRESIDENT LLOYD THOMANN
SECRETARY JOHN MINOR
TREASURER FARNOL ADLER

This club is composed of men who have won a school letter in some intercollegiate sport. The members of the organization are constantly striving to cultivate loyalty to the college among its students, to preserve the ideals and traditions of Junior College, to promote and regulate athletics and to encourage the exhibitions of good sportsmanship in all athletic games.

They have been unusually active this year. Their chief contribution toward swelling the traditions of the college was the dance which they sponsored, and during which they crowned Miss Mary Catherine Badger as "J" Club Queen. Each member of the club wore a small black and gold "J" to distinguish him from the dancers. Later, at the annual convocation devoted to the awarding of athletic awards, they presented their Queen with a pin bearing a small black and gold "J."

INTERNATIONAL RELATIONS CLUB



Back Row, Standing—Stanley Wienshienk, Charles Fore, Bob Bigham, George Sakellaris, Howard Gray, Frank Wright, Jacob Reis.
Front Row, Seated—Leora Lawlor, Arthur Goldberg, Verona Come, Jerome Kintner, Dorothy Robnett.

INTERNATIONAL RELATIONS

PRESIDENT ARTHUR GOLDBERG
VICE-PRESIDENT JEROME KINTNER
SECRETARY-TREASURER VELMA STETTER

International good will and a broader knowledge of world affairs are the two chief aims of this organization. To secure these ends the club often sponsors local and national speakers of note.

Membership in this club is open to students of Social Sciences and to those who have an average of M in all subjects excepting whatever course in Social Science they are taking, in which they must have at least an S.

The club meetings are bi-monthly and include discussions on all topics of contemporary international importance. This year the club was represented on one of the Public Forums by the club president, Arthur Goldberg. He was asked to serve on the invited panel, whose duty it was to question the speaker and to stimulate the discussion.

MIXED CHORUS



Back Row, Standing—Wm. Neudorff, Bernell Andrews, Frank Leibold, Dale Means, Corwin Moore, Kenneth Wilcy, Frank Fitzpatrick, Norman Mitchell, Cleo Noland.
 Second Row—Madonna Tibbs, Louise Noellsch, Frances Vincent, Jeanette Westpheling, Evelyn Piper, Louise Panigot, Mary Shikles, Glenys Garrett, Frances Will, Mary Elizabeth Fuhrman.
 Front Row, Seated—Louise Guenther, Louise Ruby, Helen Marie Hull, Ruth Myers, Mr. Elliott, Freda Hayes, Louise Westpheling, Lena Cathrin Miller, Dorothy Orth.

MIXED CHORUS

PRESIDENT HARRISON MAXWELL
 VICE-PRESIDENT MILDRED MOORE
 SECRETARY-TREASURER MARJORIE KELLY
 LIBRARIAN FRANK LEIBOLD

"Music," someone has said, "is the fourth need of man: food, clothing, shelter—then music." The Mixed Chorus is endeavoring to supply that need for Junior College. Meeting every Monday and Wednesday afternoon, the sixty-some members of the chorus whole-heartedly sing for their own enjoyment. Then they share this enjoyment with the rest of the school in two convocation programs, a Christmas program, and their most outstanding achievement—"The Seven Last Words," by Dubois. Not only do they share it with the school, but they bring the community in to enjoy with them this annual presentation which always attracts capacity crowds. The Chorus invites the singers of the community to take a part in the actual production as well as inviting the public to hear it. They are cherishing dreams of the time when the chorus and audience shall be so large as to necessitate the use of the Krug Park Bowl or the steps and park in front of the City Hall.

Just to pause on Tenth Street on a day when the windows are open provides a ready concert for any passer-by; and if his imagination be active, he will find himself whirled into the midst of a "Czecho-Slovakian Dance," off on a "Gypsy Trail," or fairly dizzy from the spinning of the "Russian Top."

"The man that hath no music in himself,
 Nor is not moved with concord of sweet sounds,
 Is fit for treason, stratagems, and spoils."

A CAPPELLA CHORUS



Back Row, Standing—Chester Lee Smith, Paul Frantz, Phillip Frantz, Harrison Maxwell, Wm. Moore, David Allen, Hubert Fitch, accompanist; Bill McCallum, John Rucker.
 Second Row—Gwen Greene, Margaret Lowe, Glenna Smith, Ruth Riplinger, Gwyn Rowden, Gretchen Berghoff, Luella Hendrickson, Marjorie Kelly Corbin Goff.
 Front Row, Seated—Dorothy Robnett, Mildred Moore, Dorothy Powell, Juliet Osborn, Mr. Elliott, Virginia Dedrich, Dorothy Klawuhn, Julia Lucas, Ruhamah Peret.

Singing its way straight into the hearts of the people of St. Joseph, the A Cappella Chorus is one group in the college which carries its activities outside the school. As far as the A Cappella is concerned, it has put Junior College on the map, not only in St. Joseph, but in many towns in northwest Missouri and has pushed its frontiers on into Kansas. During this school year the A Cappella appeared more than thirty-five times to sing before convention groups, civic clubs, teachers' meetings, and churches, being heard by several thousand people during the season.

The twenty-five members of the A Cappella Chorus are chosen on the basis of voice quality and dependability. They meet with the Mixed Chorus on Mondays and Wednesdays, and as a separate group on Fridays, and frequently hold practices during the week at the homes of the members. Although the director and members of this group receive no remuneration or extra academic credit, they must be present at all rehearsals or be dropped from the chorus. They sing because they love to sing, giving their time and talent for that reason alone. The idea is not merely to sing a few songs, but to make good music for themselves, for others, and with others—music "of the people, for the people, and by the people."

WOMEN'S ATHLETICS



Back Row—Thora Sue DeVall, Maryn Matthews, Lila Campbell, Grace Opal Vogelman, Alice Florea, Maureen Talty, Mildred Bringman.
Front Row—Avis Florea, Dorothy Robnett, Virginia Gibson, Verona Come, Dorothy Welsh, Leora Lawlor.

WOMEN'S ATHLETICS

PRESIDENTVERONA COME
VICE-PRESIDENTMILDRED BRINGMAN
SECRETARYMARGARET MUIR

This organization has as its primary purpose the furtherance of athletic interests among the women of Junior College. The members take active part in their own intramural games which include swimming, baseball, basketball, ping pong, and volleyball.

Athletic awards are made to each girl making a total of 500 points in the various sports. An award of 100 points is made in each of the team sports. Points are also awarded for individual matches and for championships won.

DRAMATIC CLUB



Back Row, Standing—Mary E. Cooper, Frances Vincent, Elizabeth Townsend, Mary Kathrine Badger.
Second Row, Standing—Bill McCallum, John Minor, J. R. Stafford, Bob Bigham, Keith Compton.
Front Row, Seated—Wm. Corrington, Julia Greenfield, Dorothy Brown, Margaret Bowen, Jack Chaney.

DRAMATIC CLUB

PRESIDENTDOROTHY BROWN
VICE-PRESIDENTKEITH COMPTON
SECRETARYMARY CATHERINE BADGER

It was the custom to reach a long hook out of the wings and jerk the offending actor unceremoniously off the stage. The members of the Junior College Dramatic Club, although not exactly Walter Hampdens or Katherine Cornells, have at least, in their several public performances, not been "given the hook." In convocations they presented two plays, a satirical comedy and a serious play. In the all-school play, "Mary, Mary, Quite Contrary," the club was well represented.

Dramatic Club members rarely miss the meetings. That would be missing a cue! It isn't often that one may see scenes from "Ah, Wilderness," "Beyond the Horizon," and "Ile," as was possible at the Eugene O'Neill meeting.

The most dramatic Dramatic Club activities, not to mention the perhaps melo-dramatic steak-fry, were the Movie-Night party and the trip which several of the members made to Kansas City to see George M. Cohan in "Ah! Wilderness."

At the Movie-Night party the members came dressed like their favorite movie-picture actor and did scenes from that actor's current picture. It was a very well-attended party, drawing such favorites as Ginger Rogers, George Raft, Edna May Oliver, The Marx Brothers, Frederick March, Constance Bennett, Kay Francis, Katherine Hepburn, and Leslie Howard. Greta Garbo, however, had said, "Ay thank ay stay home!"

BOOT AND SPUR



Back Row—Eleanor Weller, Retta Lu Alexander, James Murray, Keith Compton, Lois Coy, Virginia Judah.
Front Row—Dorothy Robnett, Jeanette Westpheling, Altha Polk, Marguerite Sheridan, Louise Westpheling, Mary Shikles.

BOOT AND SPUR

PRESIDENTKEITH COMPTON
VICE-PRESIDENTMILDRED KEANE
SECRETARY-TREASURERVELMA STETTER

A personality pleasing to the group and a deep interest in riding are the only qualifications for admittance to the club.

When the club was first organized only women were eligible for membership. Since then, however, several males have been admitted to this equestrian group. This year the club enjoyed several picnics and moonlight rides. The feature of one was the abrupt unseating of Miss Julia Greenfield.

The members rode Sanders' horses from the Parkway Stables.





HOWARD GRAY
Basketball Mgr.

COACH DONAHUE
JOHN MINOR
Intramural Mgr.

MASON AUSTIN
Track Mgr.

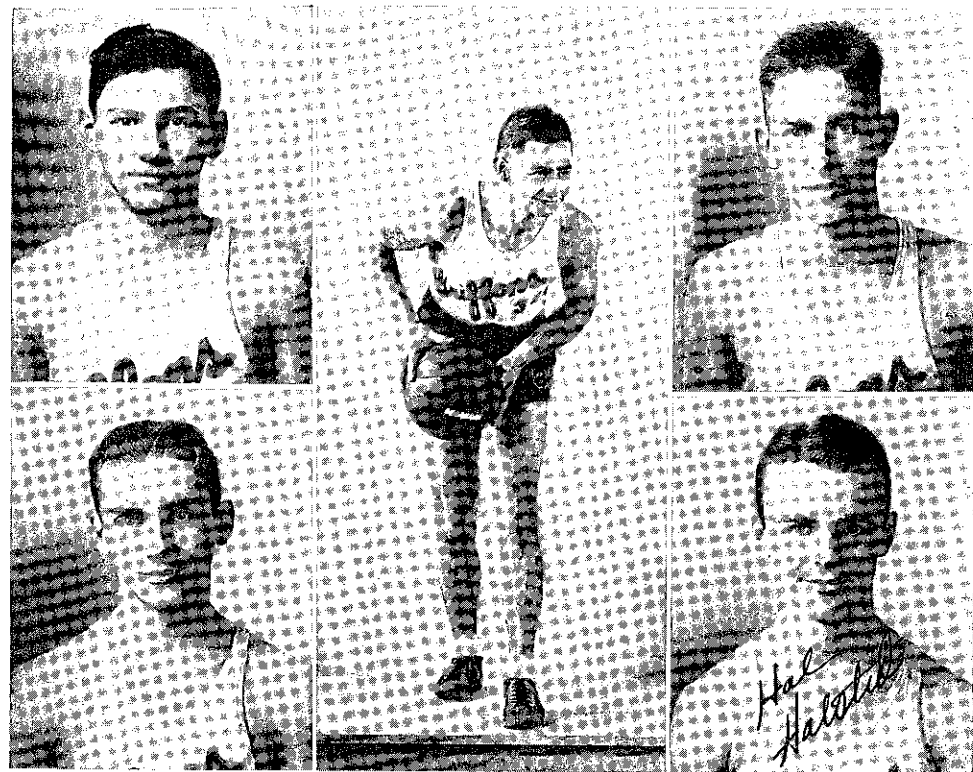


CHARLES FORE

PERRIN KENT

CORBIN GOFF

VARSDITY BASKETBALL



Farnol Adler (Forward): Possessed of a head as cool as it is dark, he plays consistent good ball. His spirit and sportsmanship have been an inspiration to the squad.

Mason Austin (Center): Despite a bad knee injury, he has played bang up ball all season. A smooth, accurate passer, as well as a cool headed floor man, he fits well in any combination.

Captain Loyd Thomann (Forward): A two-year veteran and the outstanding star in the Griffon athletic constellation. Probably the best man of his size the city has ever turned out. He topped the city scoring column this year, as well as that of the team.

Milton Cowgill (Center): Playing the hardest position on the team because of his height, "Cowg" turned in one brilliant floor game after another and finished the season second in the team's scoring column.

Hal Halsted (Guard): Offensively Hal's brand of ball cannot be topped. One of the few good spot passers in the city and very adept at retrieving the ball from the backboard, his aggressiveness has initiated many Griffon scoring sprees.

VARSDITY BASKETBALL



COACH DONAHUE

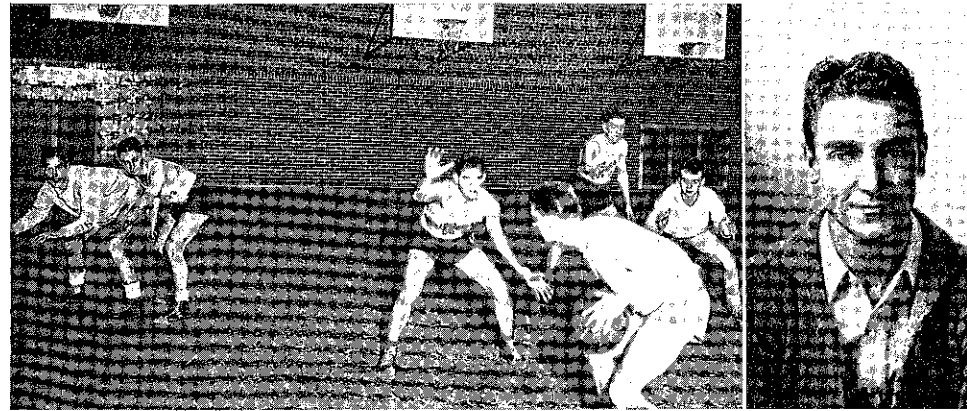
Robert Kiley (Guard): The personification of the ideal guard. He plays a defensive game to perfection. His feeding the ball to his teammates was a strong factor in the team's success. A court man par excellence.

Wilburt Klamm (Guard): The hardest driving man on the squad. Fast breaking, aggressive, and a bulwark on defense as well as offense. His all around floor game and team work did much toward piling up the long string of Griffon victories.

Don Marshall (Forward): Small, fast, and deceptive, Don's cool headed playing and steady influence ironed out many ragged attacks into smooth running plays.

Leonard Rothstein (Forward): A typical hot shot. When he begins to barrage the bucket the scorer reaches for his chalk. His side court thrusts pulled many games out of the fire. Concentrating on offense, he proved a nightmare to opposing guards.

BASKETBALL SEASON



HAROLD DUTTON

With four lettermen and a number of former high school stars from the Freshman class, Coach Mike Donahue, with the help of Captain Lloyd Thomann, built up an excellent team, handicapped in size, but veritable giants in "fight."

Playing their first game against the college team from Conception, the Griffons scored a 27-22 victory. The following week the team from Clarinda Junior College went home with the short end of a 35-16 score. Nebraska Wesleyan, a four-year school, was the third victim for the fast stepping Griffons, losing 31-24.

In the fourth game of the season, played at Conception, the Griffons lost a close fight 21-18. The next night the weary Griffons dropped a hard fought battle to Tarkio College, 16-30. Graceland College of Lamoni, Iowa, suffered a 17-28 setback at the hands of the Griffons.

The Blue Eagles of Kansas City, Kansas, went down under a 34-43 defeat.

Trenton Junior College was unable to hold down Thomann and Rothstein and lost 32-48. Then the Griffons suffered their third loss of the season at the hands of St. Paul's College, 47-34. Four days later the team journeyed to Trenton and again won, in a low-scoring melee, 16-11.

Junior College, Red Oak, Iowa, was defeated 33-28. The Kansas City, Kansas, Junior College easily defeated the Griffons, scoring 37 points to 14. Cameron Junior College stepped up to eke out a 19-17 decision.

In the next game Chillicothe Business College offered little opposition. Graceland College was handed another setback, losing 30-42. In the next game, against Clarinda, the Griffons, led by Thomann, chalked up 50 points to 17. Chillicothe Business College took a one point decision over the Griffons, winning 22-21. St. Paul's College gained a 33-18 decision from J. C. In the final scheduled game of the season J. C. defeated Cameron J. C. 22-19.

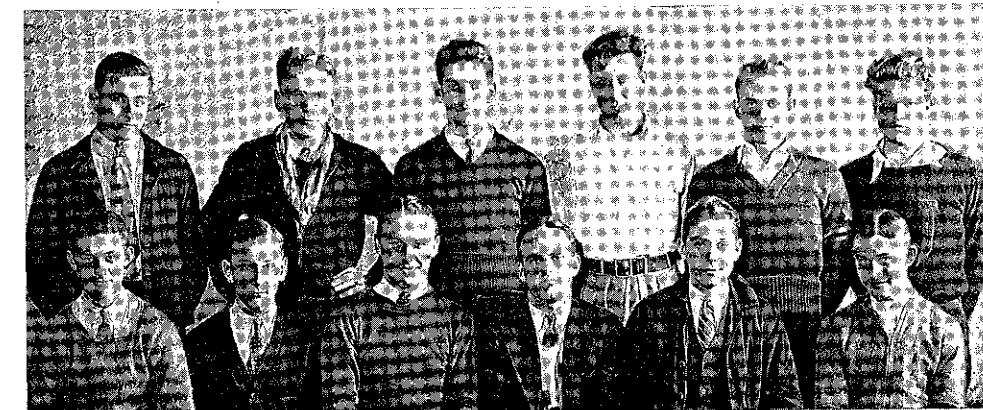
Playing in the State Junior College tournament, the Griffons won their first round game but lost out in the second round to Hannibal-La Grange.

TRACK



CAPT. FRANK KIEFFER

CAPT. RUSSELL McCAMY



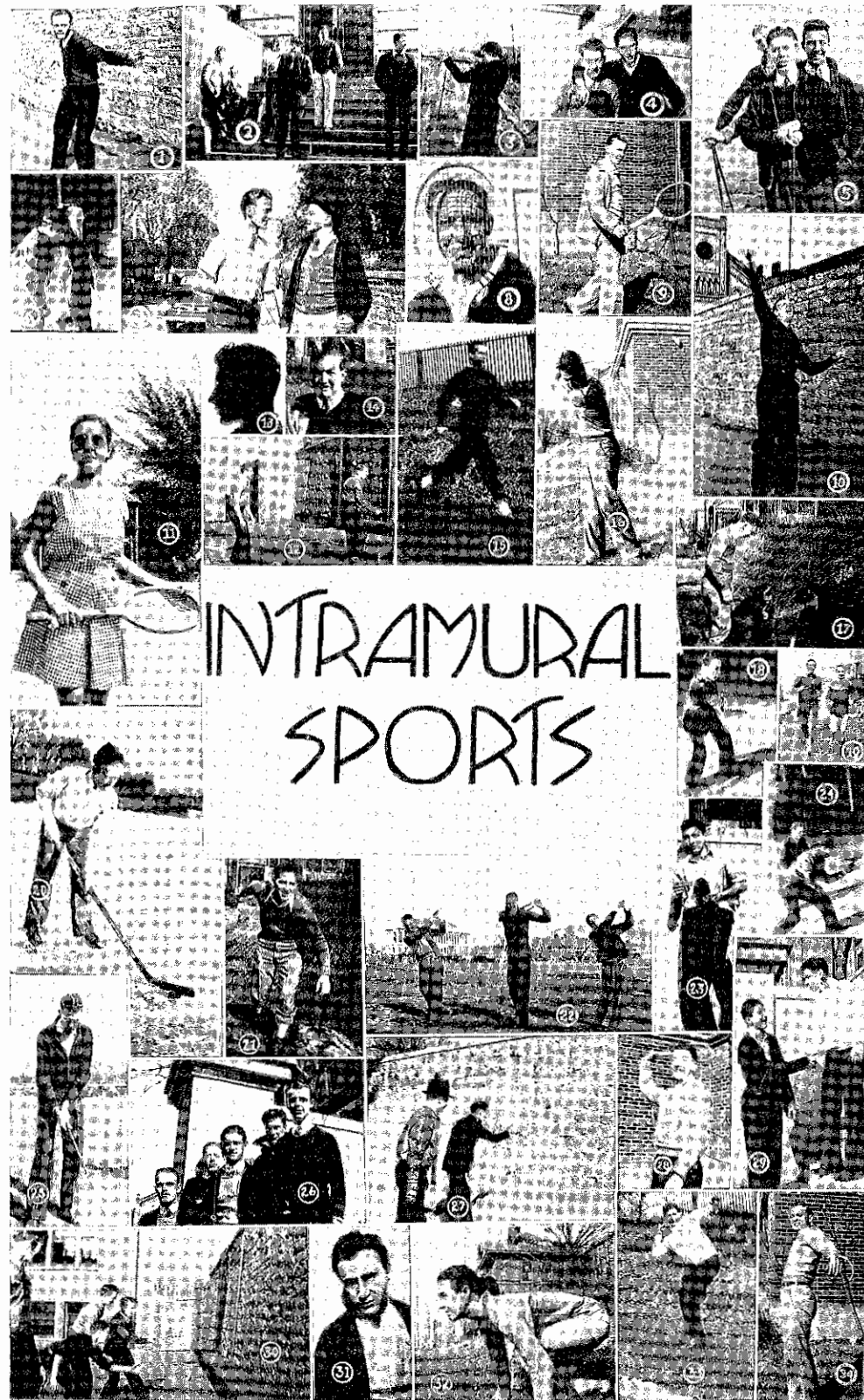
Back Row—Billy Grimes, Wilbur Duffendack, Phillip Frantz, Frank Kiefer, John Rucker, Russell McCamy.
Front Row—A. L. Jones, Herman Libbe, Charles Fore, Don Marshall, Earl Wasserman, Cleo Noland.

Both the past records of the members of our '35 squad and our heavy '35 schedule promise a good year on the cinder track.

Although building his team around only two lettermen from last year, the co-captains, Russell McCamy and Frank Kiefer, Coach Donahue has promising material in the incoming freshmen.

The schedule opens with a dual meet with Fort Scott, Kansas, Junior College, March 29th. The next event is the state Junior College indoor meet which is to be held at Columbia, Missouri, April 5th. The next meet will be with Chillicothe Business College, April 12th.

The team will compete next in the state Junior College outdoor meet, which will be held at Columbia, either May 10th or 11th. Those men who place in the state outdoor meet will compete with those who place in the Kansas state meet at Kansas City, Kansas, some time the latter part of May.



INTRAMURAL SPORTS

At the opening of the 1934-35 intramural season, Walter Wagner was selected intramural manager, but upon his withdrawal from school John Minor assumed his duties and proved to be an excellent manager.

The intramural year began with a basketball tourney in which the team piloted by Don Marshall won the title. Closely following this event on the sport calendar were the bi-weekly swimming meets held in the Y. M. C. A. pool. The fall season was climaxed by tourneys in golf and horseshoes. Jack Wilson emerged the winner among the club wielders. J. R. Stafford proved the best of the tossers of the "lucky iron" and was crowned champion along with Jack Wilson.

Ping Pong proved to be the most popular winter sport. In the first tournament Farnol Adler captured the singles title and the team of Morton Leibowitz and Bob Kiley took the doubles crown. In the second tourney, in which the better players were placed in an upper bracket, Morton Leibowitz took the title in the championship flight. Burton Larson was the winner of the lower bracket. The final ping pong event of the year was the mixed doubles tournament in which the team of Velma Stetter and Farnol Adler were "smitten" queen and king, respectively.

CUE TO PICTURES

1. Chester lines up for a hard drive.
2. One of the most popular of intramural sports, gabbing in the sun.
3. Pot him! Julie.
4. "Ego" and Bob, the ping pong doubles champs.
5. Golfers three.
6. Swat it, Paul!
7. No, we don't conduct boxing tournaments.
8. Guess which, Corwin or Billy.
9. Libbe's a lazy--
10. Oh! swat that high one!
11. Yes, go ahead and play, Louise, but don't muss those pretty shorts.
12. Keep your eye on the pill.
13. Farnol, the ping pong player.
14. Here is the manager. Ain't he nice?
15. Nice stride, Dale.
16. That Compton form!
17. No not a crap game, just measuring a close one at the horseshoe pit.
18. It's a bottom.
19. Fore and Means in a driving finish.
20. Didja ever see a fish on skates?
21. J. R. and his championship form.
22. A hook, a slice, and one down the middle.
23. Now, what's Adler and his paddle doing in here again.
24. I'll bet on Paul.
25. Douglas, the "golf nut."
26. Marshall's championship basketball team.
27. My gosh! those guys in here again?
28. You can be as good as Bob if you hold your mouth right.
29. Leibowitz, second semester ping pong champ, being congratulated by Adler, the first semester winner.
30. And the 4th hour calculus class (to the left of the picture) buzzes on.
31. Jack Wilson, champeen golfer.
32. Get set! Go!
33. At least 25 feet.
34. Calm, cool, classy, Carpenter.

[Page Sixty-seven]

This yearbook may contain images, language, or other content that could be offensive to modern users. The content may be disturbing and offensive, but should be viewed within the context of that period. The material is being presented as part of a historical record and in no way reflects the values of Missouri Western State University.



Back Row—Jack Martin, Corwin Moore, William Moore, Wilbur Duffendack.
Front Row—Robert Kiley, Chester Lee Smith, Harold Taliaferro, captain; Herman Libbe, Emerson Carpenter.

TENNIS

The Tennis squad of 1935 starts its year with what is perhaps the brightest outlook of any year in the history of Junior College.

GOLF

Junior College starts the 1935 golf season with a well balanced squad and hopes of a better than average year.



Back Row—Jack Martin, Fred Hartley, Dick Douglas.
Front Row—Jack Topping, captain; Keith Compton, John Hastings, Jack Wilson.

[Page Sixty-eight]

ADVERTISING

Dance at the
FROG-HOP

St. Joseph's Finest Ballroom

PICKETT ROAD AT BELT HIGHWAY

Compliments of
WONDER BREAD BAKERY

Acknowledgment

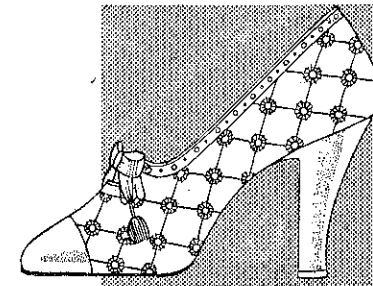
We, the staff of the 1935 Griffon, wish to thank our advertisers for making possible the publication of this book. It is only possible through the co-operation of the business men of St. Joseph to carry on our school publications. In view of this fact, we wish to urge the patronage of the firms whose names have appeared in this book.

The Griffon Staff

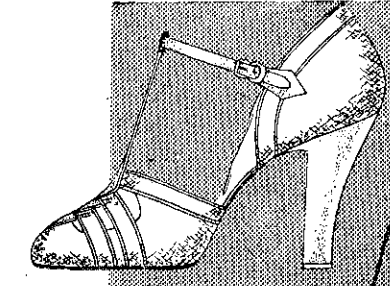
You'll be doubly thrilled in wearing white

for GRADUATION

Of course, you'll want to look your loveliest. . . . That's why all young moderns shop at Bon Marche's, because they know we always select the gayest and most youthful styles, and price them so reasonably low, too. . . . Why not come in tomorrow and select yours early?



Polo Cloth with embroidered eyelets, accented with white kid. Priced \$3.95.



An irresistible sandal of white kid cut-outs at vamp. Priced \$2.95 and \$3.95.

BON-MARCHE

6TH AT FELIX

SPECIAL! Tintable sandals in both high or low heels, only \$1.99. Tinted any color FREE.

Congratulations to the
"GRIFFON"
EDITORIAL STAFF



And Best Wishes to the Student
Body of Junior College

DRINK . . .

**HUND
&
EGER**

QUALITY

SODA WATER

Drink—

Goetz
**COUNTRY CLUB
BEER**

NO BETTER BEVERAGE BREWED

M. K. GOETZ BREWING COMPANY

Phone 6-0654

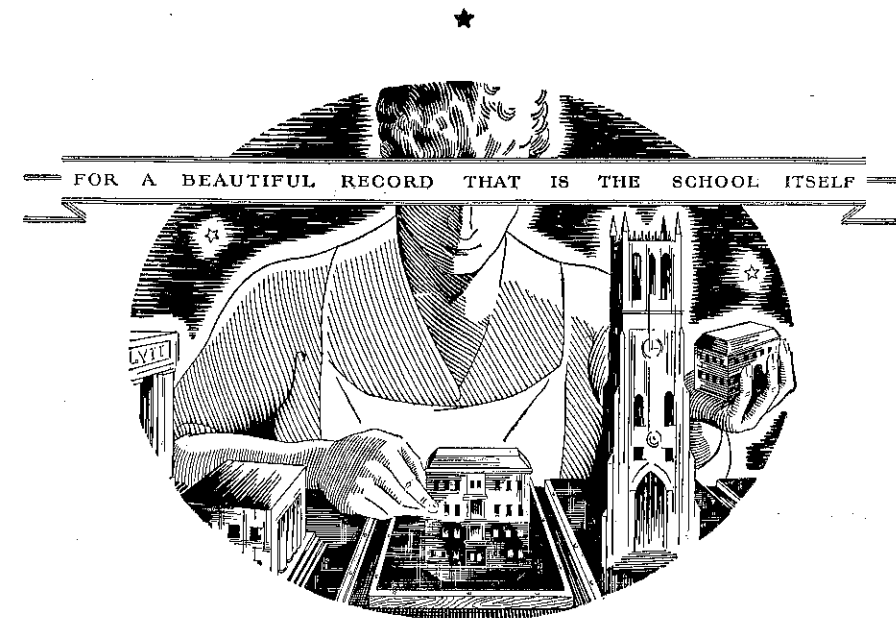
RENT—

A PITTSBURG
AUTOMATIC WATER HEATER

20 Gallon Size \$1.00 per Month

ST. JOSEPH GAS CO.

[Page Seventy-two]



ARTCRAFTS ENGRAVING CO.

*Designers
Engravers of Books*

ST. JOSEPH, MO.



[Page Seventy-three]

Always —

COOK'S CAMERA SHOP

for the best in Kodak Finishing
and Greeting Cards

110 North Eighth Street ∴ ∴ ∴ Phone 6-2897

Compliments of

PLATT-GARD BUSINESS UNIVERSITY

SPECIAL SUMMER CLASSES

Phone 6-0700 for Free Information

Accredited by the National Association of Accredited Commercial Schools.

Compliments of

**ST. JOSEPH RAILWAY
LIGHT, HEAT AND
POWER COMPANY**

1935 Griffon photography by

PRAWITZ STUDIOS

PORTRAIT . . . COMMERCIAL

9th & Francis King Hill Bldg. Phone 6-0259

Justrite

ICE CREAM

WESTERN DAIRY & ICE CREAM COMPANY
218 South Fifth ∴ ∴ ∴ ∴ ∴ ∴ Phone 6-7186

When thinking of Hamburgers, think of

HOB NOB

105 South Ninth Street

Open All Night - - - - - By the News-Press

WING PRINTING CO.

Commercial Forms, Envelopes, Letterheads
School Papers, Booklets, Catalogues
Wedding Invitations

PHONE 6-4903 - - - - - 320 SOUTH FOURTH

Rainbow Bread

is

Good Bread

CRIBE BAKING CO.

*Compliments
of*

HILLYARD CHEMICAL CO.
St. Joseph, Mo.

ST. JOSEPH LUMBER CO.

WESTMINSTER PHARMACY

CHAS. McROBERTS, Prop.

2518 Frederick Ave.

St. Joseph, Mo.

AUTOGRAPHS



C O M B E
PRINTING
COMPANY

WITHIN our own organization we have complete facilities for creating and producing modern printed and lithographed products.

. . . . Letterheads, direct-mail folders, broadsides, booklets, four-page letters, window displays, counter cards, stationery supplies, catalogs, checks, ruled forms, calendars, blotters, posters in fact any form of printed or lithographed work required by the business world today.

Printers of this Junior College Annual

For prompt and
EFFICIENT SERVICE
PHONE
6-0213

Combe Printing Co.
Fourth and Charles
St. Joseph, Missouri

[Page Seventy-seven]

SOPHOMORES AND FRESHMEN WITHOUT PICTURES

SOPHOMORE GIRLS

ADAIR, JUNE
BOWEN, MARGARET
HATFIELD, AMELIA
HOPKINS, ALBERTA

HUNT, MADELINE MAY
REIPLINGER, RUTH
RUTHERFORD, COLLEEN
WELLER, ELEANOR

SOPHOMORE BOYS

ANDRUS, CHARLES E.
AUSTIN, MASON
BOTTORFF, GLENN
CHANCE, THEODORE
COOPER, LEROY
DAWSON, O. L.
DOUGLAS, RICHARD
FENNER, GEORGE
GOLDMAN, IRVING
GORDON, LYNN
KIEFER, FRANK
O'MARA, JOHN

MITCHELL, NORMAN
MORROW, ROBERT
MORTON, JACK
PIERCE, FRANCIS
PUGH, JESSE E.
ROSS, FRANCIS R.
SHARP, ROBERT
SMITH, CHESTER LEE
TOPPING, JACK
TOWNSEND, FRED
WEAKLEY, JAMES
ZUROVSKY, RAYMOND

FRESHMEN GIRLS

BROWN, VIOLETTA
CRANDALL, LUCILLE
FETTING, JEANNETTE
HAGEN, CLARA
HAYES, FREIDA
JOHNSON, ONA MAE
KERSEY, MARJORIE
MASON, ELEANOR
MATHEWS, MARYRN

OZENBERGER, ELIZABETH
RUTHERFORD, MAXINE
STURHAHN, BETTY
TATE, GLADYS
TEGELER, MABEL
WALPOLE, MURIEL
WASWO, LUCILLE
WILLIAMSON, ESTHER
WYATT, JOSEPHINE

FRESHMEN BOYS

AGRANOFF, LEO
ALLEN, DAVID
BASS, J. R.
BLOCK, LEON
BRIDENSTINE, HARVEY
BURNSTEIN, IRVIN
BURTON, JIM
BURTON, TOMMY
BUTTERLY, BILL
CAMPBELL, BILL
CATRON, EDDIE
CLIZER, NORMAN
COTTIER, BRUCE
COURTIER, BILLY
COY, ROY E.
CUMMINGS, JACK
CURTISS, BILLY
CURTIS, MAX
DILLON, KENNETH
DUTTON, HAROLD
ESPING, JOHN
FARBER, ISADORE
FARRIS, EDWIN
FLYNN, JAMES
FOX, ROBERT
GIBSON, ROBERT
HARTLEY, FRED
HASTINGS, JOHN
HESSE, PAUL
HIGGINBOTHAM, NEIL
HOLCOMB, FREDERICK
HUNT, LEWIS

JAMESON, WM.
JOHNSON, CONDON
JOHNSTON, WALKER
JONES, A. L.
KENT, PERRIN
KILBY, ROBERT
McCLELLAN, RAY
MARTIN, JACK
MEANS, DALE
MILLER, STUART
MUIR, ROBERT
PENNY, SMITH
PFAFF, HAROLD
PIERCE, KENNETH
ROSE, RUSSELL
ROTH, JOHN
ROTHMAN, HARRY
RUDDY, WARREN
SAKELLARIS, GEO.
SALLYARDS, RICHARD
SCHINDLER, LEON
STARKS, CONDON
STEFFENS, ROGER
THOMSON, HOWARD
THOMAS, CHARLES
VAUGHAN, WM.
WAKE, RAYMOND
WILSON, GARVEY
WISE, LESTER
WOOD, JOHN
WOOD, WILLIS
KIRSCHNER, DALE

1934-1935