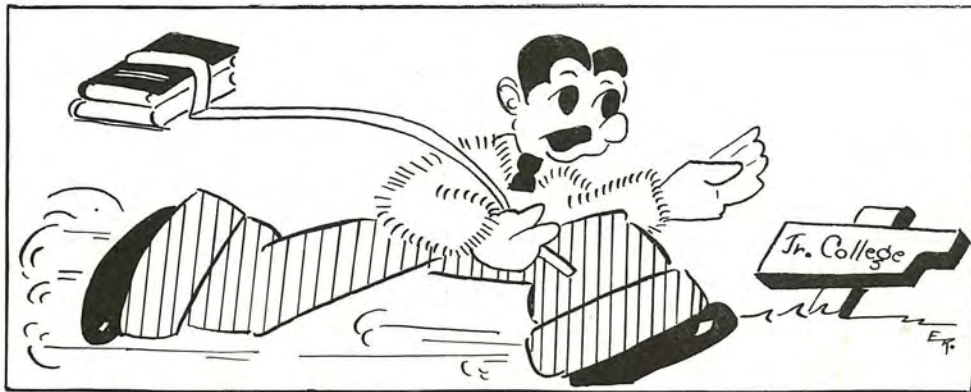




EX LIBRIS

This yearbook may contain images, language, or other content that could be offensive to modern users. The content may be disturbing and offensive, but should be viewed within the context of that period. The material is being presented as part of a historical record and in no way reflects the values of Missouri Western State University.



GRIFFON

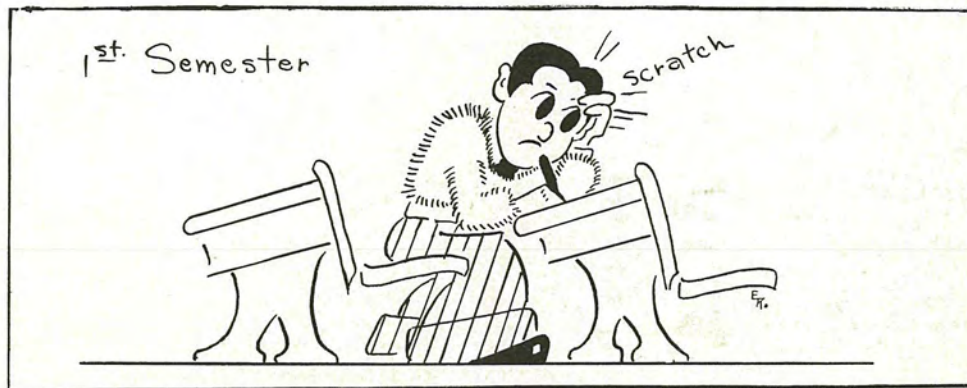
NINETEEN HUNDRED AND THIRTY-SIX

Published by a staff chosen
from the student body of
St. Joseph Junior College



SECTIONS

1. Faculty
2. Sophomore
3. Freshman
4. Features
5. Beauty
6. Organizations
7. Athletics
8. Advertising



FOREWORD

The staff gives this, the sixteenth annual publication of The Griffon, to the Griffonites and their friends. We have tried to give you a real picture of our college life—as one who sees its humorous side. We hope we are not too credulous, in portraying college life as a farce, in believing this book may, somehow, mitigate life's future sorrows. If our theme should serve as an exhilarant, then our work on this, the 1936 Griffon, has been successful.

CO-EDITORS

DON WHITCRAFT

MARGARET ADAMS



DEDICATION

To our Sophomore sponsor and to one who has helped make this publication possible, Dr. Samuel T. Sanders, we, the Griffon Staff, dedicate this, the 1936 year-book.



section I
FACULTY



MISS BLUM

BOARD OF EDUCATION

JOHN PATT
President

MRS. CLIFFORD B. ADAMS
Vice-President

DR. H. W. CARLE

G. D. BERRY

MRS. TRUE DAVIS

E. F. GARVEY



I. E. STUTSMAN



RAYMOND S. ELLIOT



RADIENCE ZOLLINGER

ORREL MARIE
ANDREWS
A. B., Wichita Municipal University; A. M., University of Kansas.



NELLE BLUM
A. B., University of Oklahoma; A. M., Columbia University, New York.



HELEN BULLARD
BROWN
A. B., University of New Mexico; A. M., University of Wisconsin.



MABEL COOK
A. B., Maryville State Teachers College; A. M., Columbia University, N. Y.



HASBROUCK
DELAMETER
M. D., University of Alabama.



ELBERT DONAHUE
B. S., A. M., St. Louis University.



GEORGE H.
DUERKSON
B. S., Southwestern State Teachers College, Weatherford, Okla.; A. M., University of Kansas.



RAYMOND ELLIOTT
B. M., University of Kansas; New York University, N. Y.; M. S., University of Kansas.



AMY DOROTHY
EWAN
B. S., Central Missouri State Teachers College; A. M., Teachers College, Columbia University, N. Y.



MARY E. B. NEELY
A. B., Middlebury College; A. M., University of Wisconsin.



FRANK S.
POPPLEWELL
B. S., M. S., Kansas
State Teachers Col-
lege, Pittsburg, Kan-
sas.



GRANT PISTORIUS
B. S., Kansas State
Teachers College, Em-
poria; A. M., Univer-
sity of Kansas.

EDITH MOSS
RHOADES
A. B., Wellesley Col-
lege; A. M., Univer-
sity of Wisconsin.



HESTER ROBINSON
A. B., University of
Michigan; A. M., Uni-
versity of Chicago.

MARY ROBINSON
A. B., University of
Michigan; A. M., Uni-
versity of Washing-
ton.



SAMUEL T.
SANDERS, JR.
A. B., A. M., Uni-
versity of Louisiana;
Ph. D., University of
Iowa.

R. E. STONE
A. B. University of
Idaho; A. M., Univer-
sity of Washington.



JEAN TROWBRIDGE
A. B., University of
Wisconsin; Library
Training at St. Louis
Public Library; Grad-
uate of Library
School, University of
Wisconsin.

B. O. WILLHITE
B. S., State Teach-
ers College, Warrens-
burg; A. M., Univer-
sity of Missouri; Stu-
dent Stout Institute,
Minomonie, Wisconsin.



EMILY WYATT
A. B., University of
Missouri; A. M., Mid-
dlebury College.



section 2
SOPHOMORES

MARGARET ADAMS

Co-editor of Griffon Annual, 1936; Associate Editor Griffon News, 1935; Freshman Editor Griffon Annual, 1935; Boots and Spurs, 1936; Press Club, '35 and '36; Editors and Publications, 1936; Co-Business Mgr. Annual Staff, 1936; Advertising Committee of All-School Play, 1935.



WILLIAM ALBRIGHT
Spanish Club; Rifle Club.

BERNEIL ANDREWS



WILLIAM BIRD
A Cappella Chorus; Mixed Chorus; String Quartet; Vice-Pres. Boots and Sprus, 1936; Christmas Program; Sophomore Program; Footlights, '35 and '36; Orchestra; College Night.

JACK BLACET



ESTELLE BLANAR
Cheshire Cheese; Advisory Board, Penny Whistles; French Club; Program of French Club Banquet, 1935; Contributor to Penny Whistles; Reporter Griffon News, 1936; Sophomore Editor, Griffon, 1936; All-School Play, 1936; Alternate Member of Senate, 1935.

TED BLOOM

President of Student Body, '35 and '36; Mace; College "Y"; Athletic Council; Chairman Music Committee, Footlights, '35 and '36; Director Footlights Orchestra, '35 and '36; Director All-School Band.



MILDRED BRINGMAN
Vice-President of Women's Athletics, '35 and '36; Sec.-Treas. Teacher's Guild; Secretary of Athletic Council; Girls' Sport Editor of Griffon Annual; J. C. Y. W.

ELIZABETH BRUBAKER

G. A. A., '35 and '36; Horseshoe Manager, '34 and '35; Basketball Manager, '35 and '36; J. C. Y. W., '35 and '36; Natural Science Club, '35 and '36; Mixed Chorus, '34 and '35; "Seven Last Words," '34, '35 and '36; Teacher's Guild.



IRVIN BURNSTEN
College Footlights, 1935.

ABRAHAM BURSTEN
Teacher's Guild.



BILL CAMPBELL
Dramatic Club Play; Footlights Orchestra, '35 and '36; All-School Play, '36; Sophomore Program, 11936; College Night.

EMERSON CARPENTER
Senate; President, Athletic Council; "J" Club; Natural Science Club; Tennis Team; All-School Band; Mixed Chorus.



VAL CAVEY
Intramural Manager; Vice-President Bowling League; Stage Crew Manager; Clipper Club.

BRUCE COTTIER
Senate, '34 and '35; Spanish Club; Natural Science Club; International Relations Club; Mixed Chorus; All-School Band.



BILLY CURTISS
Physic Assistant.

THORA SUE DEVALL
Spanish Club, '34 and '35; Women's Athletic Association, '34 and '35; Band; Mixed Chorus; A Capella, '35 and '36; J. C. Y. W.; Teacher's Guild; "Seven Last Words," '35 and '36.



WILBUR DUFFENDACK
Track Manager, 1936; Assistant Basketball Manager; Mixed Chorus.

BURTON DUNBAR
Intramurals; Footlights, '35 and '36; Sophomore Program; Orchestra; Convocation Program.



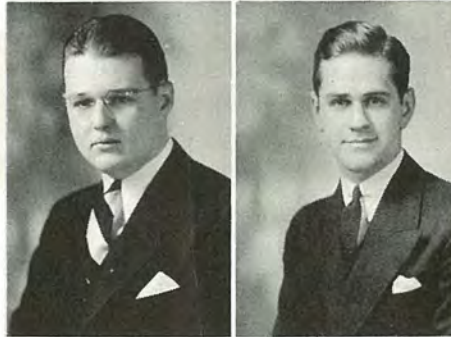
RODNEY ERICKSON
Mace; News Editor of Griffon News, '36; Cheshire Cheese; French Club; All-School Play, '35 and '36; Vice-President, Sophomore Class; Senate, '36; Master of Ceremonies, College Night; Press Club; International Relations Club.

ISADORE FARBER
 Mace; General Manager,
 Footlights, '36; "College
 Night" Program; President
 of International Relations
 Club; French Club; Track,
 '36; Dramatic Club; Sopho-
 more Convocation; J. C.
 Radio Program; Psychology
 Club.



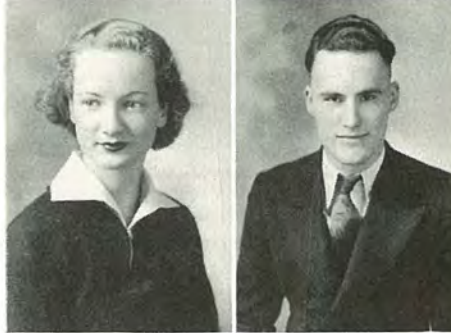
JEANNETTE FETTING

HUBERT FITCH
 French Club; J. C. Radio
 Program; Accompanist for
 Mixed Chorus, Boys' Glee
 Club, "Seven Last Words,"
 "Messiah" and A Cappella
 Program.



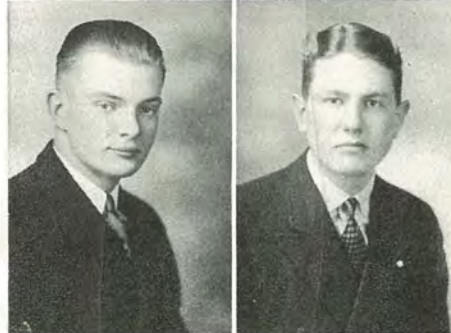
ROBERT FOX

ERNESTINE GARD



LEE GOMEL

CHARLES GRABLE
 Natural Science Club;
 Teacher's Guild; Boots and
 Spurs.



NEAL GUFFEY
 Spanish Club; Spanish
 Club President, 1936; French
 Club; International Rela-
 tions Club; Mgr. of Season
 Basketball Ticket Sale;
 Footlights; Griffon News
 Staff.

CLARA HAGAN



FRED HARTLEY
 Golf Team, '35 and '36.

FRIEDA HAYES

Women's Athletic Association, '35 and '36; Mixed Chorus, '34, '35 and '36; Teacher's Guild; J. C. Y. W.; "Seven Last Words," '35 and '36.



ALLAN HEFLIN

Natural Science Club; Boots and Spurs.



PAUL HESSEE

All-School Play, 1936; Dramatic Club.



WALTER HOECKER

Riding Club; Snapshot Editor of Griffon Annual, 1936.



FREDERICK HOLCOMB



HELEN MARIE HULL
Phi Theta Kappa; Teacher's Guild; Vice-President, J. C. Y. W.; Mixed Chorus.



WILLIAM JAMISON



CONDON JOHNSON
Vice-President of Student Body; President, Missouri Inter-Scholastic Press Association; Footlights, 1935; Press Club.



LAWRENCE KIRK

Pres. Freshman Class, 1935; President College "Y"; College Footlights; Mace; Press Club; Business Mgr., Griffon News, 1936; Phi Theta Kappa; Spanish Club; Senate, 1935.



GERALDINE KREBS
Girls' Athletic Association; Horseshoe Manager, '35 and '36; J. C. Y. W.; Teacher's Guild.



ROBERT LACOLLI



BURTON LARSON
"Footlights"; Table Tennis Team; Class B Table Tennis Champion; Bowling News Reporter.

HARRY LECHTMAN
Assistant News Editor of Griffon News, '35; Vice-President Press Club; Vice-President International Relations Club; Cheshire Cheese; Journalism Delegate to Columbia, '35; Natural Science Club; Arrangement Committee Sophomore Program, 1936; Advisory Committee of Penny Whistles.



ALVIN LIBERMAN

MARGARET LOWE
Girls' Athletic Association; A Cappella Chorus, '35 and '36; Teacher's Guild; Secretary, J. C. Y. W.; Mixed Chorus, '35 and '36.



ELEANOR MASON

MARYAN MATHEWS
Girls' Athletic Association, 1935; Teacher's Guild, 1936; Footlights, 1935; Mixed Chorus, 1936.



DALE MEANS
President of Sophomore Class; Senate; Mixed Chorus, '34 and '35; President of Boots and Spurs; Swimming Team, 1934; College Footlights, 1935; Kodak Editor of Griffon Annual, 1935; Griffon News; "Seven Last Words"; Track and Intramurals, '34.

ELEANOR MEEK



LENA CATHERIN MILLER
Mixed Chorus; Teacher's Guild; J. C. Y. W.; Girls' Athletic Association; Christmas Program, '34 and '35; Easter Program; "Seven Last Words," '35 and '36; "Messiah," 1936.

CORWIN MOORE
 Natural Science Club;
 Footlights Orchestra, 1935;
 J. C. Orchestra, 1936; Brass
 Quartet, 1936.



WILLIAM MOORE

GERALDINE MOSKAU
 French Club; Natural
 Science Club; Ping Pong.



MARGARET MUIR
 Girls' Athletic Association;
 Secretary of G. A. A., '34
 and '35; Vice-President of
 G. A. A., '35 and '36; J. C.
 Y. W.; President, '36; Nat-
 ural Science Club, '35 and
 '36; Teacher's Guild, '35 and
 '36.

JAMES MURRAY
 Press Club, '35 and '36;
 Boots and Spurs, 1935; Span-
 ish Club, '35 and '36; Asso-
 ciate Editor, Griffon News,
 1935; Asst. Sports Editor,
 Griffon, 1935; Editors and
 Publications, 1935.



RUTH MYERS
 Secretary of Student Body,
 1936; Senate, 1936; Griffon
 Annual Staff, 1936; Mixed
 Chorus, '35 and '36; "Seven
 Last Words," '35 and '36;
 Member of College Night
 Arrangement Committee;
 "Messiah," 1936.

SIDNEY NAIDORF
 Footlights of 1935; Intra-
 mural Sports; Cheerleader.



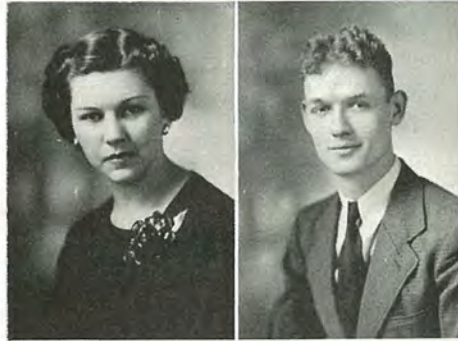
ELAINE NEUDORFF
 Spanish Club; Natural
 Science Club; Boots and
 Spurs; Mixed Chorus;
 "Seven Last Words"; "Mes-
 siah"; Ping Pong.

CLEO NOLAND
 Track, '35 and '36; Orches-
 tra; Footlights, '35 and '36;
 Mixed Chorus.



DOROTHY ORTH
 Mixed Chorus; "Seven
 Last Words"; "The Mes-
 siah"; Teacher's Guild;
 Girls' Athletic Association.

JULIET OSBORN
 A Cappella, '35 and '36;
 Mixed Chorus; Christmas
 Program, 1935; Spanish
 Club; "Messiah"; "Seven
 Last Words."



KENNETH PIERCE

EVELYN PIPER
 Natural Science Club;
 Teacher's Guild; J. C. Y. W.;
 Mixed Chorus; "Seven Last
 Words."



ALTHA POLK
 French Club; Dramatic
 Club; Property Committee
 for All-School Play, 1935;
 Boots and Spurs, 1935; Phi
 Theta Kappa.

RUTH REIPLINGER
 A Cappella, '35 and '36;
 Mixed Chorus; Girls' Ath-
 letic Association; Tennis
 Manager, 1935; "Seven Last
 Words"; J. C. Y. W.; Bas-
 ketball; Volleyball; Christ-
 mas Program; "The Mes-
 siah," 1936.



JACOB REISS

GWEN ROWDEN
 A Cappella, '35 and '36;
 Mixed Chorus; Natural
 Science Club; International
 Relations Club, 1935; "Seven
 Last Words," "The Mes-
 siah."



GORDON RUBY

LUCILE RUBY
 Mixed Chorus; Press Club;
 Griffon News Staff; A Cap-
 pella; Program Committee
 for Sophomore Play; "Seven
 Last Words"; "The Mes-
 siah."



JOHN RUCKER
 Track, '35 and '36; Foot-
 lights, '35 and '36; J Club;
 A Cappella; College Y;
 "Seven Last Words."

WARREN RUDY



GEORGE SAKELLARIS
Student Assistant in
Chemistry; International Re-
lations Club; Boots and
Spurs; Griffon Annual Staff;
Griffon News Staff.

LEON SCHINDLER



CARLETON SCHIRMER
All-School Play, '36; Adv.
Mgr. Griffon Annual Staff,
'36; Boots and Spurs; Foot-
lights, 1936; Ping Pong.

ELLSWORTH SCHAFFER



MARCELINE SHIPMAN
French Club; Footlights,
1935; Girls' Athletic Associa-
tion.

GLENN SMITH
"Seven Last Words," '35
and '36; Natural Science
Club, '35 and '36; "Messiah,"
1935; Spanish Club, '35 and
'36; Footlights, '35 and '36;
International Relations Club;
A Cappella; Mixed Chorus;
Christmas Program, '35.



VIRGINIA SMYTH

ELAINE SPRINGER



VIRGINIA TALBOTT
Spanish Club.



JANE AHLBERG
MARY MARGARET ALLISON
JEAN ANDREWS



WALTER AUG
NELLE AUSTIN
EARL AUXIER



SAMUEL BAKER
CLAYTON BANTA
GERALD BARSCH



JAMES BRADSHAW
ELEANOR BRINTON
BERNICE BRISTOL



HARRY BROADHEAD
ELMER BROWN
THOMAS BURNETT



ELLA MAE BURTON
MARY LOUISE CARGILL
VIRGINIA CARSON



HUGH CAUGHEY
RAY CELLAR
IVAN CHATHAM

s
y
y
N
C
e
l
s
n
s
l
f

PATTY CRANE
VIRGINIA CLEVELAND
FLOYD COCHRAN



GRETCHEN COEN
MARY KAY COOKSEY
AUSTIN CRAIG



JACK CRONAN
HERMINE CUSHMAN
ALAN DAVISON



VIRGINIA DAVISSON
CLAUDE DEARING
ESTHER DE BORD



DAVID DICKENS
MARY DILLER
SAM GOLINSKY

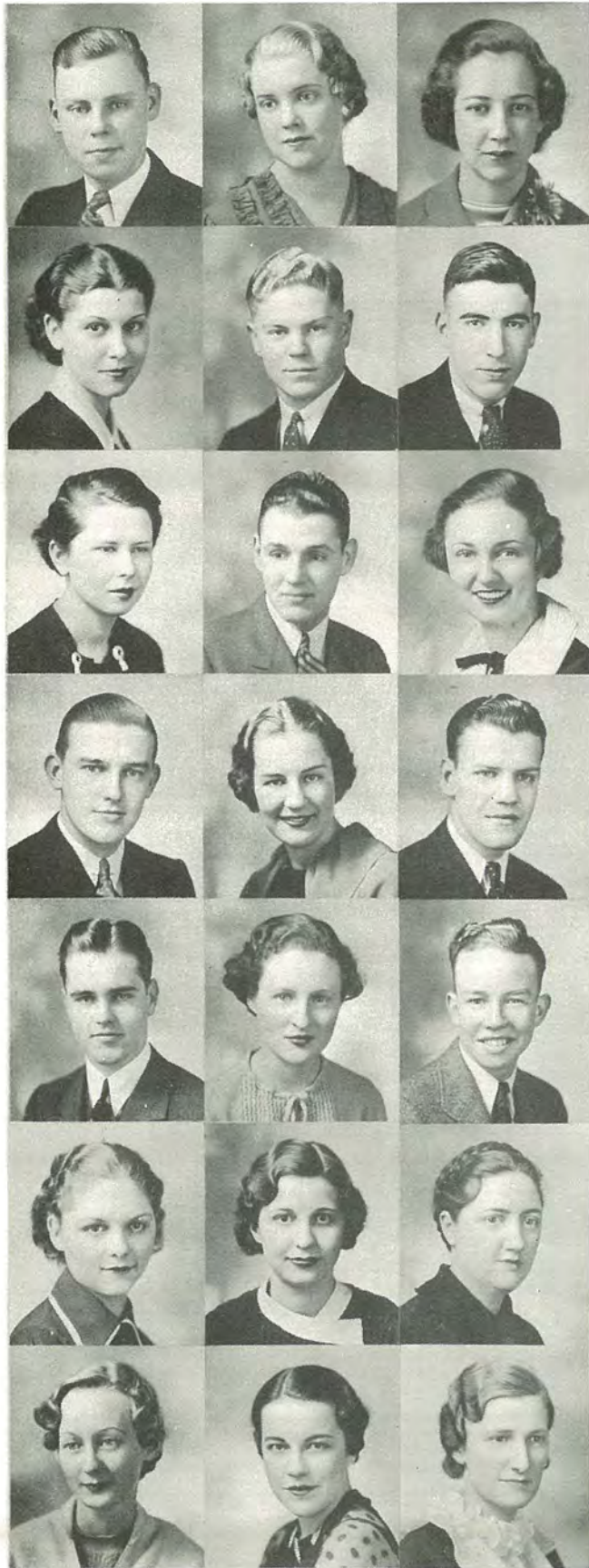


JOE HAGUE
MARY HALE
HAROLD HALL



ROBERT HALLIDAY
FRANCES HAMLET
GEORGE HAMMETT





RUSSELL HEUMANN
 ROBERTA HOFFMAN
 MARIE HOLDING

HELEN HORN
 JACK HOSFORD
 FRED HUNT

ANNA MARIE IGOE
 EUGENE JAMES
 FRANCES JONES

H. D. JUDSON
 GLATHA LEE KAPP
 DON KECK

RAY KEENAN
 MILDRED KELLY
 PAUL KIMBERLIN

INA JANE KOHLER
 AUDREY LARGE
 ALLENE McVAY

MILDRED MACKEY
 ESTHER MAXWELL
 HELEN MEYER

DORA MILLER

JACK MOORE

MAUDE MOORE



FAE MURPHY

SYLVIA NELSON

VIRGINIA LEE NEUDORFF



MIKE O'MALLEY

BEN PASTERNAK

HELEN PERET



JANE PHALP

PHYLLIS PITLUCK

LEONA PLUMB



SIMON POLSKY

JOHN PRIDGEON

BERNARD PRIEBE



RICHARD PURVIS

KATHRYN RAICH

GORDON RAMSEIER



BENNY TRILINSKY

HARRY REEVES

ELEANOR RIVERS





MARGIE LOU ROACH
MILLIDEAN ROBNETT
ROBERT ROYER



INEZ RUTLIDGE
CONSTANCE SAVAGE
KATHERINE SCHER



HARRY SILVERGLAT
ANNA LEE SMITH
DOROTHY STOCKTON



HELEN TYSON
RUTH VAN ANDLE
LENORE VAUGHAN



L'ELLA VOGEL
DUNCAN WADDELL
BENJAMIN WEIL



CAROL WEIL
WALTER WESTPHELING
LUCILLE WHITE



RICHARD WHITE
CHARLES WILCOX
SPENCER WILDHAGEN
FREDERICK STOERKER

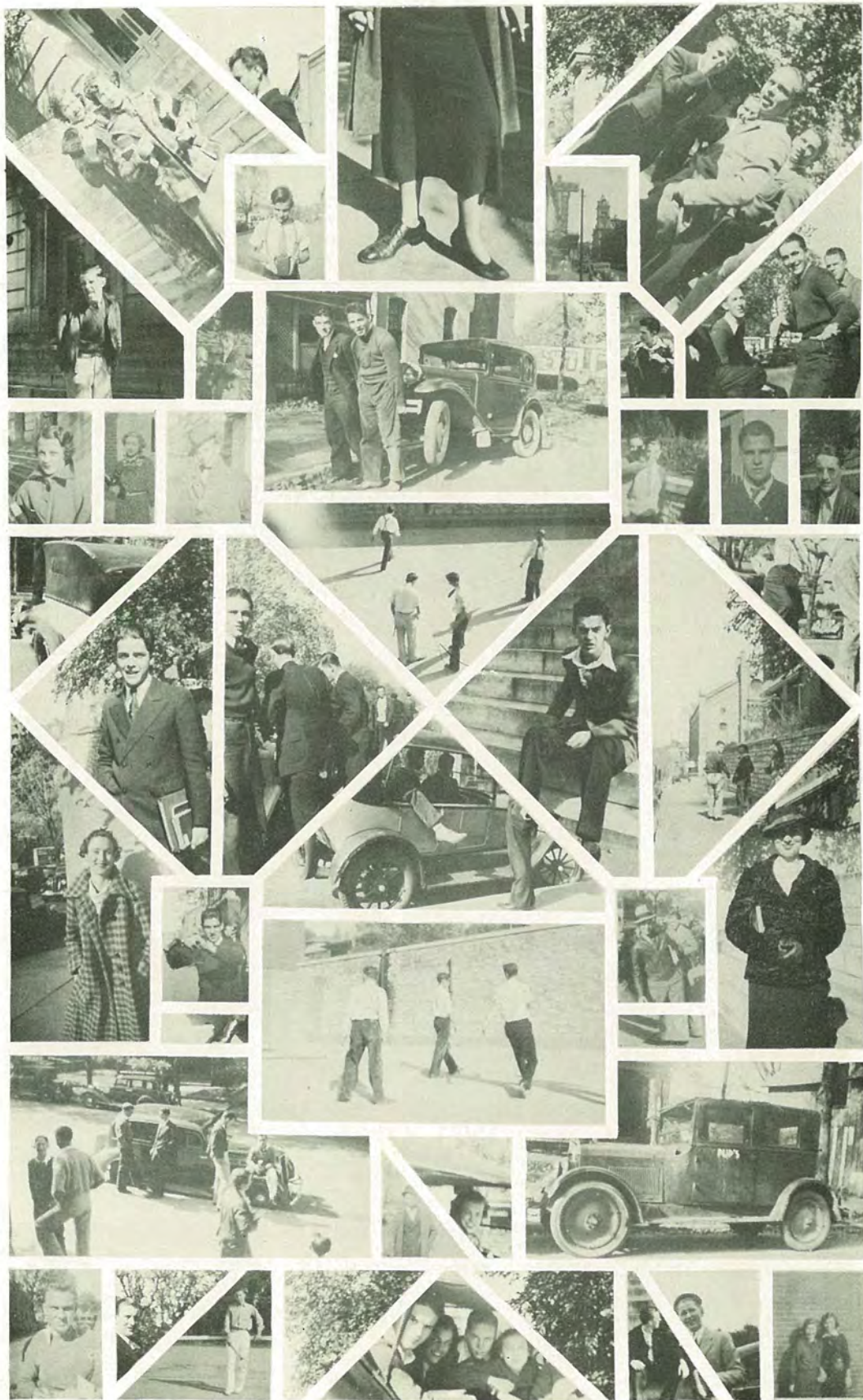




section 4

FEATURES









section 5
BEAUTY



Estelle Blazar





Jean Hale Bird





Ruth Myers





ACKNOWLEDGMENT

We, the staff, wish to acknowledge and express our appreciation to Mr. Bing Crosby, famed radio, screen, and stage star, for judging the 1936 Griffon Annual Beauty Queen Contest.



section 6

ORGANIZATION

GRIFFON ANNUAL STAFF



MARGARET ADAMS



DON WHITCRAFT

The Editor and Business Manager of The Griffon are chosen by the Senate and the administration. They in turn choose their assistants to serve with them in publishing the year book.

It is the duty of this staff to arrange a budget and let all contracts for outside work that is to be done on the book. Each section is assigned to separate editors and these editors are responsible for their particular assignment. The organization and details of the book must then be completed. The Griffon plays an important part in the extra curricular activities of its staff members.



Back Row—Ray Cellars, advertising; Elaine Neudorff, assistant kodak editor; Walter Hoecker, kodak editor; James Murray, athletics; Carleton Schirmer, advertising; Hannah Sarno, freshman editor; Harry Lechtman.

Front Row—Glatha Lee Kapp, typing; Eleanor Rivers, art editor; Mildred Bringman, girls' athletics; Donald Whitcraft, Margaret Adams, co-editors; Estelle Blamar, sophomore editor; Phyllis Pitluck, freshman editor.

Not in picture: Ruth Myers, Grace Vogelman, organization editors; Elaine Springer, sophomore editor; Ray Keenan, advertising; Dale Means, business manager.

PRESS CLUB



Back Row—Donald Whitcraft, James Murray, Lawrence Kirk, Rodney Erickson, Hannah Sarno.

Front Row—Margaret Adams, Louise Guenther, Louise Westpheling, Harry Lechtman, Bernice Compton, Lucille Ruby.

The Press Club, organized in 1933, has as its purpose the promotion of journalism and emphasizes work for the improvement of the school publication, Griffon News.

The club is composed of those students who take an active part in the publishing of the school paper. Membership is limited to sixteen. The officers for this year have been: Louise Westpheling, President; Harry Lechtman, Vice-President; and Margaret Adams, Secretary-Treasurer.

Meetings are held twice a month. One meeting is a business meeting and is conducted at school. The other is a social meeting held at the homes of the members of the club. At these meetings-the paper is criticized and subjects of journalistic interest to members of the club are discussed. Miss Mary Robinson, faculty advisor for the paper, is also the sponsor of the Press Club.

GRIFFON NEWS STAFF



Back Row—Phyllis Pitluck, Hannah Sarno, George Thompson, Harry Lechtman, Bernice Compton.

Front Row—Estelle Blonar, Lucille Ruby, Louise Guenther, Lawrence Kirk, Don Whitcraft.

The Griffon News is published by the student body of Junior College. Primarily it is the chief organ of student opinion and the medium by which all news of importance is presented. In addition to providing an accurate account of events at Junior College, this publication presents, through its editorials and various columns, comments on school affairs, thus providing an outlet for student thought.

The publishing of the paper is under the direction of a staff chosen for their ability and interest in journalism. Miss Mary Robinson, a member of the faculty, is the sponsor of the publication.

The Griffon News holds a membership in the Missouri Interscholastic Press Association and annually sends delegates to its convention.

EDITORS AND PUBLICATIONS



RODNEY ERICKSON MAX WITT DON WHITCRAFT MARGARET ADAMS

The publication of the Griffon year-book is a compilation of all the events of the year in Junior College. It is the medium through which the achievements and personalities of each class are preserved. Editors, managers and members of the staff each try to do their part to make the Griffon Annual the outstanding achievement of the school year. Don Witcraft and Margaret Adams are the co-editors of the book this year. A year-book is essential to the preservation of school life and this year's staff hopes that this work will serve to encourage future "Griffonites" to continue the publishing of the Griffon Annual.

The "Penny Whistles," Junior College's literary magazine, is sponsored by the Cheshire Cheese. The material found in its pages is the work of the students alone. Included in "Penny Whistles" are short stories, poems, drama, sketches, discription and expository articles. The publication is usually distributed to the students during the month of May and is obtained through the activity ticket. Miss Harriet Hutchinson is editor of this year's "Penny Whistles."

The Griffon News is published once a month, despite the fact that Junior College does not have a journalism department. Articles are written by the students, relating to the activities and news items of the school. Max Witt is editor of the 1936 editions of the Griffon News. He is ably assisted by Rodney Erickson and a host of reporters.

CHESHIRE CHEESE



Back Row—George Thompson, Constance Savage, Benjamin Weil.
Front Row—Mary Kay Cooksey, Paul Hesse, Estelle Blonar, Harry Lechtman.

Cheshire Cheese has long been one of the most active of all Junior College clubs. Early in the fall the president, Harriet Hutchinson, and her advisory committee, consisting of Estelle Blonar and Harry Lechtman, met to plan the program for the year. An extensive study of Narration, Drama, Exposition, and Original Writing was outlined, and has been carefully followed. The purpose of the club has been to bring about a better understanding and appreciation of great literature, and to assist each member to improve the quality of his own writings. The meetings have been held fortnightly at the homes of the members.

New members are elected on the basis of their ability to write, read, and speak, and upon their scholarship. They must average S in their English courses, and M in others to be eligible, and then each one must prepare an original piece of writing and two book reviews in order to qualify for his tryouts. The new members taken in in 1935 and 1936 are Constance Savage, Mary Kay Cooksey, Benjamin Weil, and George Thompson. The original members at the beginning of the school year were Rodney Erickson, Harry Lechtman, Paul Hesse, Harriet Hutchinson, and Estelle Blonar.

Among the activities of the club is the supervision of the Anne Lowe Wells Scholarship Fund. Also, various members have been selected from the club to make up the staff for the publication of the literary magazine, "Penny Whistles."

BOOTS AND SPURS



Back Row—Don Whitcraft, Virginia Lee Neudorff, Ted Bloom, Walter Westpheling, Roberta Hoffman, Allen Hefflin.

Front Row—George Sakellaris, Bill Bird, Margaret Adams, Elaine Neudorff, Louise Westpheling, Herbert Erskine, Walter Hoecker.

The Boot and Spur was organized in the fall of the first semester of 1931. Membership was open only to the young women of Junior College. Interest in riding has grown so much among the male students, during the last few years, that their admittance to the club was imperative.

The purpose of the club is to create an interest in riding, to encourage friendship, and to promote good sportsmanship among students of the college. The only requirements necessary for membership to Boot and Spur are a true interest in riding and a willingness to co-operate.

The officers are: Dale Means, President; Bill Bird, Vice-President; and Elaine Neudorff, Secretary.

This year the Boot and Spur members enjoyed many picnics and moonlight rides. All the members of Boot and Spur feel that a brisk canter on a horse from Parkway Stables is more than worth the tell-tale soreness, and that inability to sit down without a painful groan, should be concealed, if possible.

PHI THETA KAPPA



Back Row—Carol Weil, Lawrence Kirk, Esther DeBord, Frederick Stoerker, Benjamin Weil.
Front Row—Gordon Ramsejer, Helen Marie Hull, Phyllis Pitluck, Max Witt, Constance Savage,
Mary Kay Cooksey, Sam Golinsky.
Not in picture—Grace Opal Vogelman, Harriet Hutchinson.

Phi Theta Kappa is the national honorary scholastic fraternity for junior colleges. Its object is to promote scholarship, to develop character, and to cultivate fellowship among the students of the junior colleges of the United States of America. Only students having an average of S to S plus are eligible for membership.

The members of the club furnish the monthly programs. With its members taken from every course the school offers, the programs are varied by letting members present parts of the field of work in which they are interested. Literature, Music, Drama, and Science are naturally to be found on the programs.

This year the club sent eleven of its members to the national convention held at Independence, Kansas. The information gathered at this convention will be used in carrying out the work of the coming year.

The officers this year have been: Max Witt, President; Grace Vogelman, Vice-President; Harriet Hutchinson, Secretary; and Alvin Liberman, Treasurer.

INTERNATIONAL RELATIONS



Back Row—Rodney Erickson, Don Whitcraft, Paul Hesse, Glenna Smith.

Front Row—Max Witt, Mary Kay Cooksey, Isadore Farber, Harry Lechtman.

International good will and a broader knowledge of world affairs are the two chief aims of this organization. To secure these ends the club often sponsors local and national speakers of note.

Membership in the club is open to students of Social Science and to those who have an average of M in all subjects except in the courses of Social Science, in which they must average an S.

The club meetings are held twice a month and include discussions on all topics of contemporary international importance. Round table discussions are held at which each student may express his or her own views and ideas upon the subject being discussed.

Mr. Frank Popplewell, a member of the faculty, sponsors this organization.

"J" CLUB



Back Row—Cleo Noland, Emerson Carpenter.
Front Row—Whitney Potter, Mr. Donahue, Bernard Priebe.

This club is composed of young men who have shown outstanding ability in sports and have won a school letter through that medium. The members of the organization are constantly striving to cultivate loyalty to the college ideals and traditions of Junior College, to promote and regulate athletics and to encourage the exhibition of good sportsmanship in all athletic games.

Among the many activities this year, the club sponsored their annual "J" Club Dance, which is open to all junior college students. They also sponsor the sale of the season Basketball tickets. The young lady selling the most tickets is presented at the dance and is crowned "J" Club queen for the basketball season. Miss Elaine Springer lead the field of contestants and has ruled over the 1936 season.

Mr. Mike Donahue, athletic coach of Junior College, is the faculty sponsor of the "J" Club.

NATURAL SCIENCE CLUB



Row 3—Iris Thompson, Elizabeth Brubaker, Helen Horn, Geraldine Moskau, Elaine Neudorff, Mary Louise Cargill, Ruth Meyer.

Row 2—Bill Vaughan, Whitney Potter, Emerson Carpenter, Miss Andrews, sponsor, Bernard Priebe, Don Cluster, Allen Hefflin, Richard Karrasch.

Row 1—Bruce Cottier, Evelyn Piper, Glenna Smith, Charles Grable, Mildred Bringman, Edward Wegenek, Virginia Cleveland, Corwin Moore.

In order to be eligible for membership in the Natural Science Club, a student must average "M" in all subjects with the exception of his biological courses, in which he must average at least an "S."

The purpose of this club is to encourage the study of natural science and to support the St. Joseph Museum which it founded a number of years ago.

Each year an illustrated lecture by some widely known speaker is sponsored by the club. During the first semester Dr. Roemert of "A Century of Progress," was brought here.

However, not all its activities are serious. The annual Christmas party is always a great success and all the members look forward to the breakfast held on commencement morning.

Miss Orrel M. Andrews is the sponsor of the organization, and the following officers have served this year: President, Edward Wegenek; Vice-President, Charles Grable; Secretary, Glenna Louise Smith; and Treasurer, Mildred Bringman.

LE CERCLE FRANCAIS



Row 3—Lucille White, Isadore Farber, Mary Kay Cooksey, Rodney Erickson.

Row 2—Jerry Moskau, Esther DeBord, Sam Golinsky, Alvin Liberman, Neal Guffey, Sylvia Nelson, Patty Crane.

Row 1—Helen Peret, Estelle Blamar, Marceline Shipman, Phyllis Pitluck, Hermine Cushman, Constance Savage.

Le Cercle Francais was organized to promote an appreciation of France, its language, literature, art, and customs. Membership is extended to all second year students and to those second semester students who maintain an average of "S."

The club holds its meetings the second and fourth Thursday of each month at the homes of the members. The entire session is conducted in French, including the programs of plays, games, songs, and discussions of French literature. Through regular attendance at the meetings, the members gain valuable aid and practice in speaking French.

The organization is sponsored by Miss Mary Neely. The officers are: Alvin Liberman, President; Constance Savage, Secretary; Elizabeth Whitney, Treasurer.

LA LUCECITA



Back Row—Audrey Large, George Thompson, Alan Davison, Fred Hunt, Lawrence Kirk, James Murray, Glatha Lee Kapp.

Front Row—Maude Moore, Mary Louise Cargill, Elaine Neudorff, Neal Guffey, Juliet Osborn, Bill Vaughan, Glenna Smith, Jean Andrews, Lenore Vaughan.

The purpose of La Lucecita is to endeavor to develop greater fluency in speaking the Spanish language and to acquaint the students with the life and customs of the Spanish people. Only Spanish is spoken at the meetings and the programs, games, and songs, are all Spanish. The club affords its members a better opportunity to know and enjoy Spain and her language.

Membership is made up of second-year students and of second-semester students having an average of "S" in Spanish. The officers for this year have been: Neal Guffey, President; Audrey Large, Vice-President; and Juliet Osborn, Secretary.

The club has continued its custom of the past five years of helping a family from Old Mexico with food and clothing. A large basket of food was given them at Thanksgiving time, and again at Christmas. The club also provides them with seeds for their spring garden.

Each year the club holds an annual picnic in honor of its sponsor, Miss Brown.

ALL SCHOOL PLAY



Back Row—Bill Campbell, Estelle Blonar, Paul Hesse, Maude Moore, Gene Vance, Carleton Schirmer.

Front Row—Rodney Erickson, Grace Opal Vogelman, Isadore Farber, Gretchen Coen.

Not in picture—Helen Shemmer.

Rosario Castellanos, a young girl of Madrid, is vexed with what a woman's days must be in a world arranged by men. While brooding alone after her brothers have gone off to the amusements of the town, the girl is startled as a man's hat is blown in at the window. The owner follows immediately after to retrieve it. He falls in love with the girl, and, without telling her that he is a novelist whom she admires, arranges a second meeting. Rosario tries to remain aloof and self-possessed, but the writer proposes and she shows herself a "romantic young lady" by asking her grandmother to answer his proposal for her. Needless to say, the answer is "yes."

Maude Moore, as Rosario, convinced her audience of her romanticism, and Paul Hesse, the writer, was quite believably the knowing and capable intruder in her life. Grace Vogelman, as the grandmother, played her role with understanding. Gretchen Coen, as the maid, brought laughs with every appearance. Rodney Erickson, Carlton Schirmer, and Bill Campbell, as Rosario's brothers, contributed humor to the play in their distinct interpretations. Helen Shemmer and Isadore Farber, contributed an episode of humor as the secretary of the writer and her middle-aged admirer. Eugene Vance, as the man-servant of the writer, and Estelle Blonar, as a Spanish dancer, filled their roles capably. Miss Emily Wyatt gave excellent direction to the play.

WOMEN'S ATHLETICS



Back Row—Kathleen Andres, Eleanor Rivers, Marie Holding, Mary Hales, Frieda Hayes, Lena Catherin Miller, Dorothy Orth.

Front Row—Geraldine Krebs, Thora Sue De Vall, Margaret Lowe, Mildred Bringman, Margaret Muir, Marceline Shipman, Elaine Neudorff, Elizabeth Brubaker.

The purpose of this association is to interest young women in intramural sports; to further good sportsmanship, and to increase school spirit.

All women who are interested in sports are eligible to membership in the organization. Participation in basketball, volleyball, tennis, ping-pong, horseshoes, and other minor sports gives eligibility for a "J" letter for 500 points earned, and a "J" pin for 1,000 points earned. To legally earn an award, a member must participate in at least four of the major sports.

The officers include: Mildred Bringman, President; Margaret Muir, Vice-President; Margaret Lowe, Secretary; Elizabeth Brubaker, Basketball Manager; Thora Sue DeVall, Volleyball Manager; Margie Lou Roach, Tennis Manager; Marceline Shipman, Ping Pong Manager; and Geraldine Krebs, Horseshoe Manager.

MIXED CHORUS



Back Row—Mildred Kelly, Evelyn Piper, Maryan Mathews, Helen Horn, Esther DeBord, Frieda Hayes, Lena Catherine Miller, Mary Margret Allison.

Middle Row—Cleo Nolan, Roy Burrenet, Fred Tegeler, James Bradshaw, Bruce Cottier, Hubert Fitch, Herbert Erskine, Berneil Andrews.

Front Row—Helen Pierce, Leliane Johannes, Helen Peret, Helen Meyers, Helen Marie Hull, Ruth Myers, Nellie Fay Murphy, Mary Louise Cargill, Elaine Neudorff, Dorothy Orth.

“Music,” someone has said, “is the fourth need of man: food, clothing, shelter—then music.” The Mixed Chorus is endeavoring to supply that need for Junior College. Meeting every Monday and Wednesday afternoon, the sixty-some members of the chorus wholeheartedly sing for their own enjoyment. Then they share this enjoyment with the rest of the school in two convocation programs, a Christmas program, and their most outstanding achievement—“The Seven Last Words,” by Dubois. Not only do they share it with the school, but they bring the community in to enjoy with them this annual presentation, which always attracts capacity crowds. The chorus invites the singers of the community to take part in the actual production, as well as inviting the public to hear it. They are cherishing dreams of the time when the chorus and audience shall be so large as to necessitate the use of the Krug Park Bowl or the steps and park in front of the City Hall.

Just to pause on Tenth Street on a day when the windows are open provides a ready concert for any passer-by; and if his imagination be active, he will find himself whirled into the midst of a “Czecho-Slovakian Dance,” off on a “Gypsy Trail,” or fairly dizzy from the spinning of the “Russian Top.”

“The man that hath no music in himself,
Nor is not moved with concord of sweet sounds,
Is fit for treason, stratagems, and spoils.”

A CAPPELLA CHORUS



Row 3—Paul Franz, Clarence Brown, Phil Franz, Bill Moore, David Allen, Bill Bird, Fred Hunt, Richard White.

Row 2—Frank Leibold, Ada McCabe, Madonna Tibbs, Thora Sue DeVall, Lucille Ruby, Louise Guenther, Ruth Reiplinger, Roberta Hoffman, Esther Humphrey, Gwynn Greene.

Row 1—Millidean Robnett, Margaret Lowe, Megarie Barfield, Frances Kueker, Mr. Elliott, director, Gwen Rowden, Juliet Osborne, Glenna Smith.

Singing its way straight into the hearts of the people of St. Joseph, the A Cappella Chorus is one group in the college which carries its activities outside the school. As far as the A Cappella is concerned, it has put Junior College on the map. During this school year the A Cappella chorus has appeared before various groups and made one radio broadcast.

The twenty-five members of the A Cappella Chorus are chosen on the basis of voice quality and dependability. They meet with the Mixed Chorus on Mondays and Wednesdays, and as a separate group on Fridays, and frequently hold practices during the week at the homes of the members. Although the director and members of this group receive no remuneration or extra academic credit, they must be present at all rehearsals or be dropped from the chorus. They sing because they love to sing, giving their time and talent for that reason alone. The idea is not merely to sing a few songs, but to make good music for themselves, for others, and with others—music “of the people, for the people, and by the people.”

TEACHERS' GUILD



Row 3—Abraham Bursten, Maxine Rutherford, Gwynn Greene.

Row 2—Miss Ewan, sponsor, Elizabeth Brubaker, Geraldine Krebs, Lee Gomel, Charles Grable, Margaret Muir, Frieda Hayes, Margaret Lowe.

Row 1—Evelyn Piper, Mildred Bringman, Thora Sue DeVall, Martin Bryan, Madonna Tibbs, Dorothy Orth, Lena Catherine Miller.

Not in Picture—Grace Opal Vogelmann, Maryann Mathews.

The Teachers' Guild is composed of the members of the sophomore class enrolled in the teacher training classes. Its purpose is to study new techniques of teaching, to establish a friendly relation between teachers-to-be, and to compare experiences of practice teaching.

The officers are: Martin Bryan, President; Thora Sue DeVall, Vice-President; and Mildred Bringman, Secretary-Treasurer.

Monthly meetings are held either at school or at the homes of the members. Meetings are varied between study group work and social meetings.

THE SENATE



Ted Bloom

Ruth Myers

Condon Johnson

Senate members are selected in the fall by the students to assist the student body officers in making the laws governing the student body. Members must rank high in both scholarship and personal conduct. It is the duty of this body to provide a link in the long chain of relations between the administration and the student body. By this means, the students become self-governing and self-disciplining.

The Senate appoints committees to serve on extra curricular activities such as "Prowl Day," the school dances, and selects the general chairman of "Footlights." It helps select the staff for the various school publications, as well as makes laws pertaining to the student body, and upholds the ideals and traditions of the school.



Back Row—Bill Vaughan, Blaine Yarrington, Max Witt, Gretchen Coen, Ben Trilinsky, Leland Shilling.

Front Row—Graham Porter, Bruce Cottier, Esther DeBord, Ted Bloom, Ruth Myers, Charles Wilcox, Rodney Erickson.

THE MACE

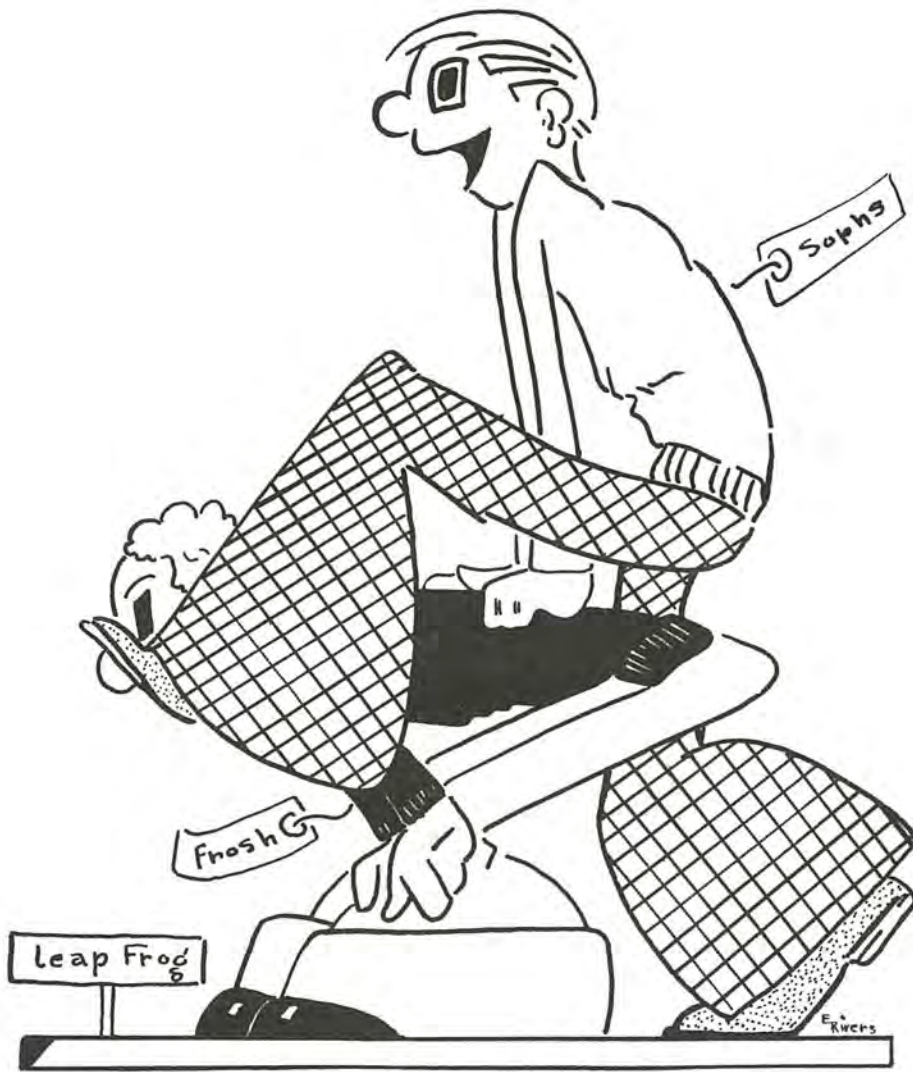


Back Row—Isadore Farber, Lawrence Kirk, Rodney Erickson.
Front Row—Harriet Hutchinson, Ted Bloom, Grace Opal Vogelman.

ATHLETIC COUNCIL



Back Row—Val Cavey, Emerson Carpenter.
Front Row—Mr. Donahue, Mildred Bringman, Theodore Bloom.



section 7

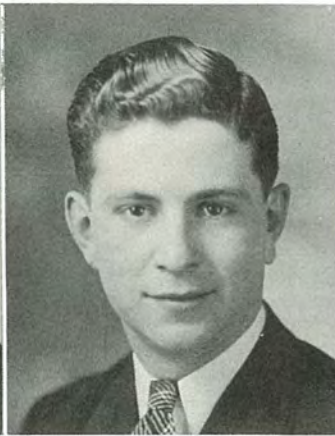
ATHLETICS



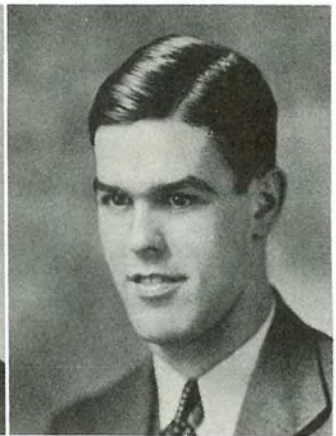
COACH DONAHUE



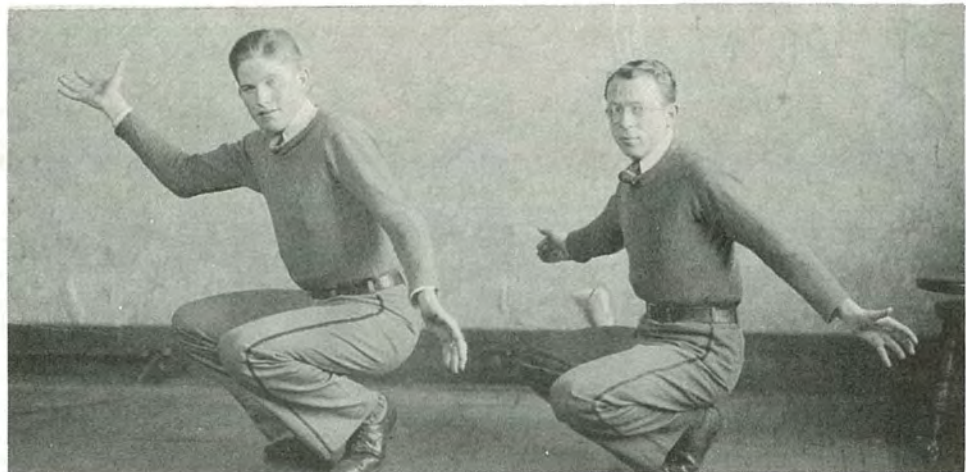
WILBUR DUFFENDACK
Track Manager



BENNY TRILINSKY
Basketball Manager



VAL CAVEY
Intramural Manager



PERRIN KENT

SIDNEY NAIDORF

BASKETBALL SEASON

Starting the season with only two lettermen from the 1935 squad, Coach Mike Donahue's Griffons developed rapidly to win fourteen games while losing four, including three games played in the state tournament. The St. Joseph team copped second place in the Missouri Junior College League, and took third place in the state tourney.

In the first game of the season, the Griffons defeated Graceland College of Lamoni, 40-32, on the Graceland court.

The next night the Griffons opened their home session with a 44-26 win over Clarinda Junior College.

A week later, a 40-33 decision over the strong Hannibal-La Grange team gave St. Joseph its third straight of the season. Coen and Sullivan played outstanding basketball for St. Joseph.

Led by Logan and Cowgill, the Griffons won their fourth game, 35-24, at the expense of Red Oak.

Coen and Halsted led the St. Joseph team to a 46-34 win over Chillicothe Business College in the next game.

The Griffons won their sixth game at the expense of Trenton, 70-9. Halsted, Cowgill, and Sullivan led the scoring in this game.

A 40-29 victory over Red Oak, with Hal Halsted starring, gave St. Joseph its seventh straight win of the season.

Seemingly a bit over-confident, the Griffons dropped their next game to Graceland College, 28-49. Ray Sullivan was the only St. Joseph player who gave Graceland any opposition.

Playing Wentworth on the home court, the Griffons lost a last-minute decision, 21-23, when a Wentworth forward made good two free throws. This was the second loss of the season for St. Joseph.

The following week, the Griffons avenged themselves with a 29-28 victory over Wentworth, by virtue of a free throw by Hal Halsted in the last minute of the game.

Playing at Hannibal, St. Joseph again took a one-point decision this time from Hannibal-La Grange, 26-25. McGuire, a newcomer to the Griffon team, and Cowgill led the scoring.

The Griffons next journeyed to Clarinda and came home with a 45-32 decision over the Clarinda squad. Cowgill, Coen, and Hal Halsted each scored five field goals and a free throw to tie for high-scoring honors.

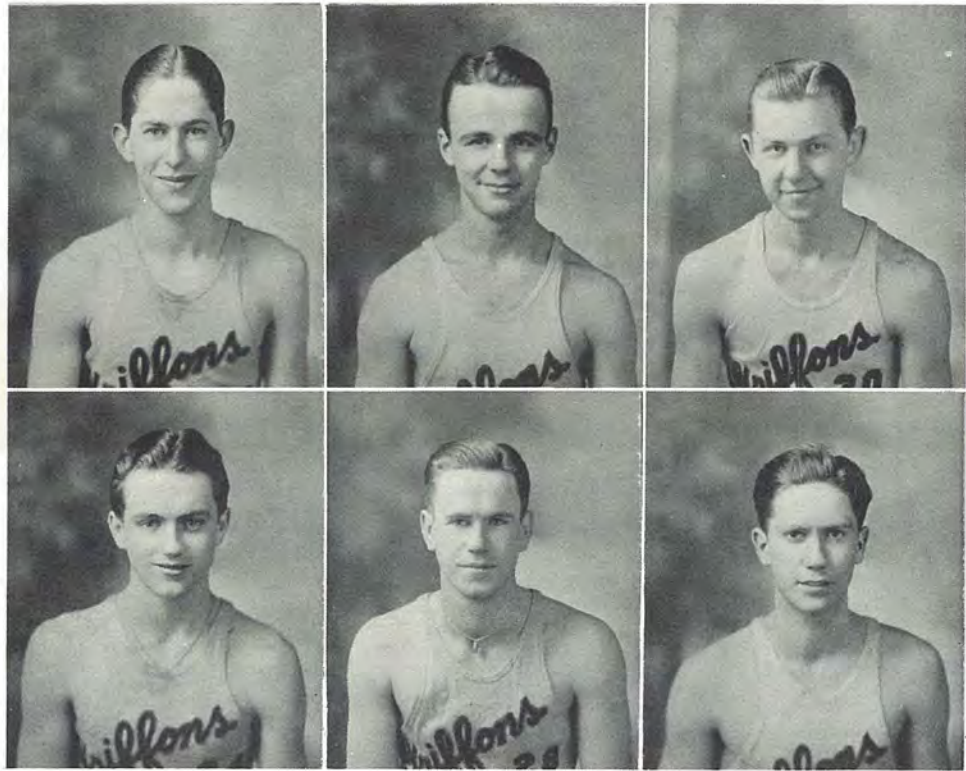
The St. Joseph cagers suffered their third defeat of the season at the hands of Chillicothe, 25-27. Coen was the high scorer of the game.

The Trenton squad went home on the short end of a 31-22 score, when McGuire played an outstanding game to lead the Griffons to their eleventh win of the season.

The St. Joseph squad terminated the regular season with a 35-31 decision over Central Wesleyan, in the most exciting game of the season. Sullivan and Halsted led the Griffons in a melee which saw 33 fouls called on members of both teams. Steiner, Central Wesleyan guard, was high scorer of the game with 11 free throws.

In the state tournament at Hannibal, St. Joseph defeated Kemper, 33-22, in the first round, but lost to Hannibal-La Grange, 19-22, in the semi-finals. The Griffons defeated Wentworth, 28-22, to take third place.

BASKETBALL MEN



Milton Cowgill, co-captain and guard, and one of the best passers seen in this city in many years. "Cog" is also possessed of a keen shooting eye, and was the second highest scorer on the team during the past season.

Hal Halsted, co-captain and guard, and the leading offensive player and scorer for the team. Hal's defensive work saved many a game and he scored in every game in which he played. He was placed at guard on the all-state team.

M. J. Coen, center, and an elongated youth who controlled the tip during most of the games, and was an outstanding defensive player: He was chosen as a forward on the second all-state team. M. J. is a freshman.

"Sky" Logan, forward, who uses his height to good advantage in helping to pile up points. "Sky" was among the five leading scorers throughout the season and was an outstanding ball handler. Logan is a freshman, too.

Ray Sullivan, forward. Ray was probably the outstanding all around player on the team. His defensive and offensive work was good at all times, and his coolheaded playing kept the team going in the pinches.

Benny Pasternak, guard. Benny was literally a ball hawk. He gave opposing forwards a lot of trouble by his constant interception of some of their best passes. His work in getting the rebound left nothing to be desired.

BASKETBALL MEN



Earl Auxier, guard. Earl's defensive work was excellent in the few games in which he played this year. We can expect much from him during the next year, as he is certain to cop a starting place.

Ray Jesberg, guard. A young player who had very little previous experience on the basketball court. Ray has shown that he will be a valuable asset to the team with a little more action.

Rollie Fehrman, guard. Rollie entered school at the second semester and of course did not play in more than three or four games, but the few were well taken care of by his excellent playing.

Bob Minor, guard. Bob also entered at the second semester. He was a good defensive player and he helped to add to the scoring. His handling of the ball and recovering was good.

Mickey McGuire, forward. The third player who entered at the second semester. Despite his lack of size he was a constant menace on the floor. His defensive paying was near perfection and he was a dependable point maker.

Don Cluster, forward. Don is another player with little previous experience. However, he saw action in over half of the games. He plays a steady, consistently good game on both offensive and the defensive.

TRACK



Back Row—Cleo Noland, Sam Golinsky, Mr. Donahue, Graham Porter, Isadore Farber.
Front Row—James Murray, Wilbur Duffendack, Harry Broadhead, Bernard Priebe.

The track team started the 1936 season with only three veterans from the 1935 team. Phil Frantz, a miler, who holds the record for that event in the Chillicothe meet, John Rucker, a quarter-miler, and Cleo Noland, a dash man, are the returning lettermen. In addition to these three, the squad is bolstered by Bernard Priebe, a weight man, also a member of last year's squad, but not a letterman. The rest of the squad will be made up of high school stars. Harry Broadhead, a pole vaulter, Graham Porter, who competes in the dash, broad-jump, and hurdles, and Sam Golinsky, a dash man, are the best prospects among the freshmen. With these men, Coach Donahue will attempt to replace A. L. Jones, Frank Kiefer, and Russ McCamey, who were lost by graduation.

The 1935 squad competed in the state meet, the Chillicothe meet, and in numerous dual meets.

Coach Donahue took a group of four men to the Kemper Indoor meet, where they gained a second in the broad jump and a third in the mile run. However, the athletes had not yet reached the peak of their condition.

Besides the State Indoor and Outdoor meets at Columbia, Coach Donahue will attempt to schedule a number of dual meets with other junior colleges of Missouri and Kansas. The men are working out daily at the city stadium, as there is no suitable place nearer than the east end track.

No captain has been chosen for this year's team. Russ McCamey and Frank Kiefer were co-captains of the 1935 squad. Due to the fact that there are only three lettermen on the squad this year, it is probable that a captain will not be chosen until the end of the season. Wilbur Duffendack has been named student manager of the track team for this year.

TENNIS

The tennis team this year will have four letter men returning from the last year's squad, besides several reserves from the 1935 squad. Bob Kiley, captain, Emerson Carpenter, "Hip" Potter, and Bernard Priebe are the letter winners who are back for this year's season. Herman Libbe, Billy and Corwin Moore also saw action last year. In addition the squad will be reinforced by Mickey McGuire, diminutive star who entered this year from Nebraska U. Only two members of the 1935 team were lost by graduation, and the reserves will fill in those positions. The team last year captured third place in the state tournament. Besides the State Junior College meet at Trenton, the tennis team will play dual matches with Kansas City, Kansas; Tarkio, Missouri, and probably will meet teams from Maryville, Kemper, and Wentworth. By the turnout so far, it seems certain that they will win a large percentage of these matches.

GOLF

The golf team was hard hit by graduation, as only one member of the 1935 squad returned to school this year. Jack Wilson, the returning letter man, will captain this year's team. Fred Hartley and Herman Libbe were reserve players last year and will probably see considerable action with the 1936 squad.

Led by the late Jack Topping, who captained the 1935 team, the golf team enjoyed a successful season last year. They participated in several dual meets with nearby colleges, and also engaged in two meets with the team from Central High School. They also entered the Heart of America tournament in Kansas City and the state Junior College tournament at Columbia. Topping was very outstanding in the state tournament.

Besides the state meets, the 1936 team will probably enter the Heart of America tournament this year, and they are trying to schedule matches with enough good golfers of other college teams. It is hoped that enough good golfers will turn out to uphold the reputation of the school on the links.





section 8

ADVERTISING



COMBE PRINTING COMPANY

WITHIN our own organization we have complete facilities for creating and producing modern printed and lithographed products.

. . . . Letterheads, direct-mail folders, broadsides, booklets, four-page letters, window displays, counter cards, stationery supplies, catalogs, checks, ruled forms, calendars, blotters, posters in fact any form of printed or lithographed work required by the business world today.

Printers of this Junior College Annual

For prompt and
EFFICIENT SERVICE
PHONE
6-0213

Combe Printing Co.
Fourth and Charles
St. Joseph, Missouri

1936 Griffon photography by

PRAWITZ STUDIOS

PORTRAIT

COMMERCIAL



Ninth & Francis

King Hill Bldg.

Phone 6-0259

Compliments of

**ST. JOSEPH RAILWAY,
LIGHT, HEAT AND
POWER CO.**

DRINK

**HUND & EGER
QUALITY SODA WATER**

DRINK . . .

Goetz
**COUNTRY CLUB
BEER**

No Better Beverage Brewed

M. K. GOETZ BREWING COMPANY

Phone 6-0654

RENT . . .

**A PITTSBURG
AUTOMATIC WATER HEATER**



20 Gallon Size \$1.20 per Month



ST. JOSEPH GAS COMPANY

PURE
● FILTERED ●
● WATER
THE ST. JOSEPH WATER CO.

ICE CREAM

WESTERN DAIRY & ICE CREAM COMPANY
218 South Fifth Street Phone 6-7186

Phone 9679



Recreation Club
119½ So. 6th St.



Bowl for Sport and Health



Congratulations to the
"GRIFFON" EDITORIAL STAFF
and Best Wishes to the
Student Body of Junior College

JOHNSON SCHOOL OF BUSINESS

Accredited by American Association of Commercial Colleges

COMPLIMENTS OF MANNSCHRECK'S BOOK STORE

• *Dance at Prinz's* •
Every Friday Night

Dine and Dance at . . .

• • **DRIFT-INN** • •
71 Highway at Blackwell Road

St. Joseph Lumber Co.

When thinking of hamburgers, think of

HOB NOB

105 South Ninth Street

Open All Night **By the News-Press**

Compliments of **BLUE VALLEY DAIRY**

Phone 6-0423

Milk - - - Cream - - - Cottage Cheese - - - Buttermilk

WING PRINTING COMPANY

Commercial Forms, Envelopes, Letterheads, School Papers,
Booklets, Catalogues, Wedding Invitations

PHONE 6-4903

318 SO. FOURTH

Eastman Kodaks Kodak Film Kodak Finishing Home Movie Kodaks

COOK'S CAMERA SHOP
110 North Eighth Street

Anderson Typewriter Company

Corona Portable Now Only \$49.50—Large Type—Small Easy Monthly Payments
Special Students Rental Rates—Three Months, \$5.00
All Makes Standard Typewriters

816 FRANCIS STREET

ST. JOSEPH, MISSOURI

Compliments of
Rainbo Bread Company

Acknowledgment

*We, the staff of the 1936 Griffon,
wish to extend our deepest appreci-
ation to our advertisers, who
have helped make this
publication
possible.*



THE STAFF

FACULTY AUTOGRAPHS

SOPHOMORE AUTOGRAPHS

SOPHOMORE AUTOGRAPHS

FRESHMEN AUTOGRAPHS

FRESHMEN AUTOGRAPHS

