

COPYRIGHT 1931
JUNIOR COLLEGE, ST. JOSEPH, MISSOURI
THEKLA ANDERSON, Editor-in-Chief
GEORGE O. KAROL, Business Manager

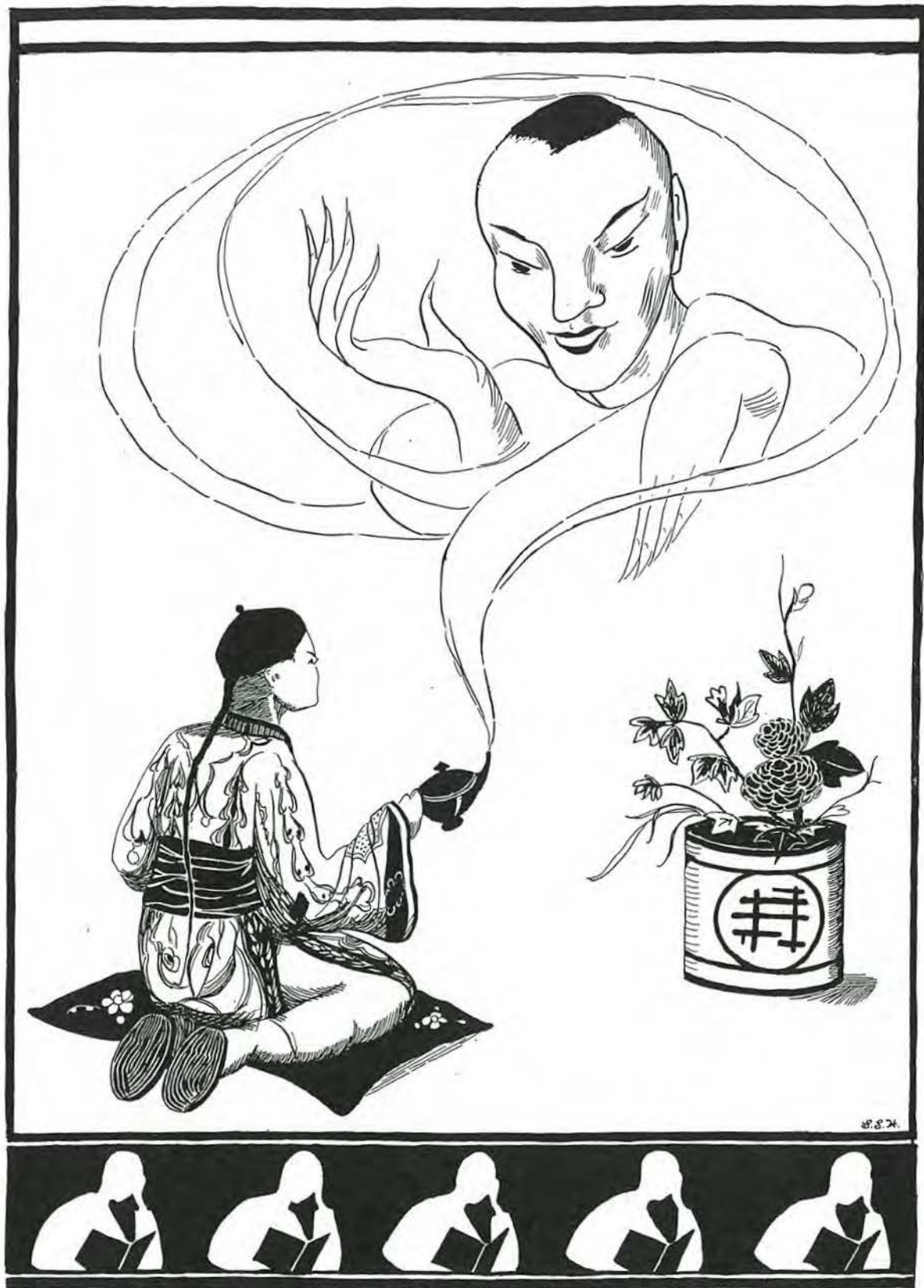
Missouri Western College
ST. JOSEPH, MISSOURI

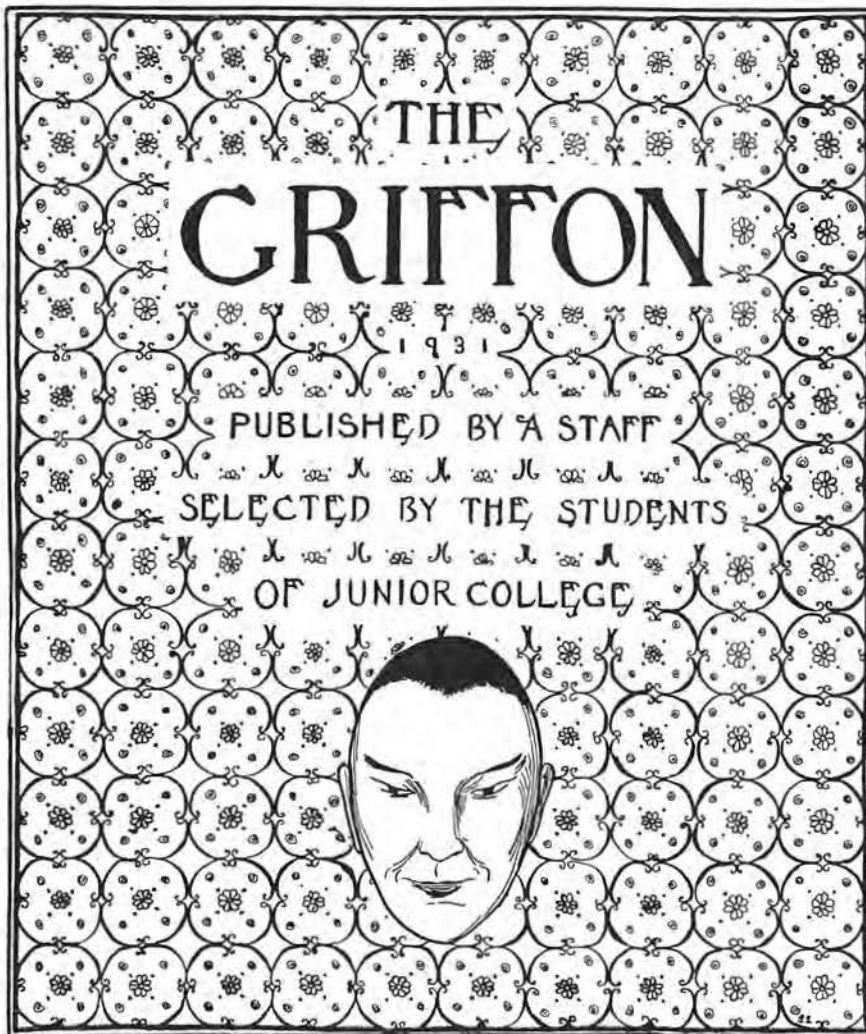
Printed by
ROBIDOUX PRINTING CO.
St. Joseph, Missouri

Engraved by
ARTCRAFTS ENGRAVING CO.
St. Joseph, Missouri



This yearbook may contain images, language, or other content that could be offensive to modern users. The content may be disturbing and offensive, but should be viewed within the context of that period. The material is being presented as part of a historical record and in no way reflects the values of Missouri Western State University.





Missouri Western College
ST. JOSEPH, MISSOURI

DEDICATION



ANNE LOWELL WELLS

She has enriched our lives with her ideals; she has given us the treasure from her great store of knowledge; and she has left us the splendor of her radiant spirit.



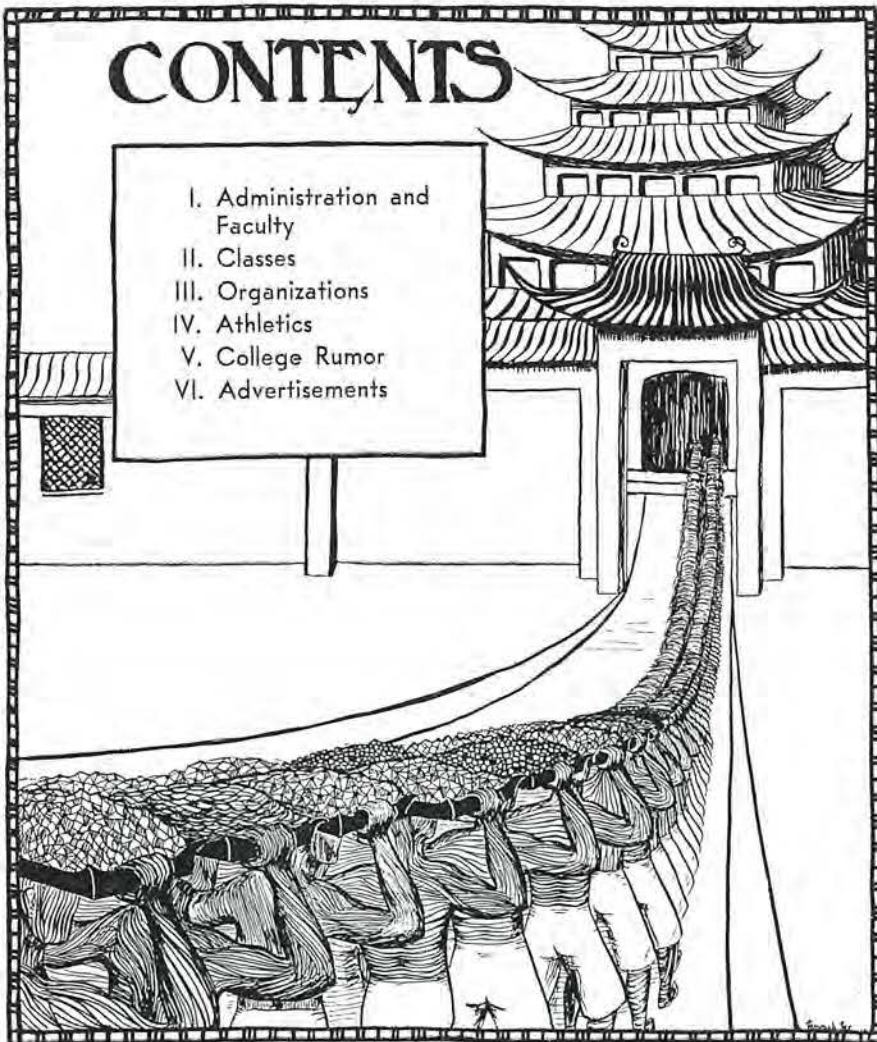
FOREWORD

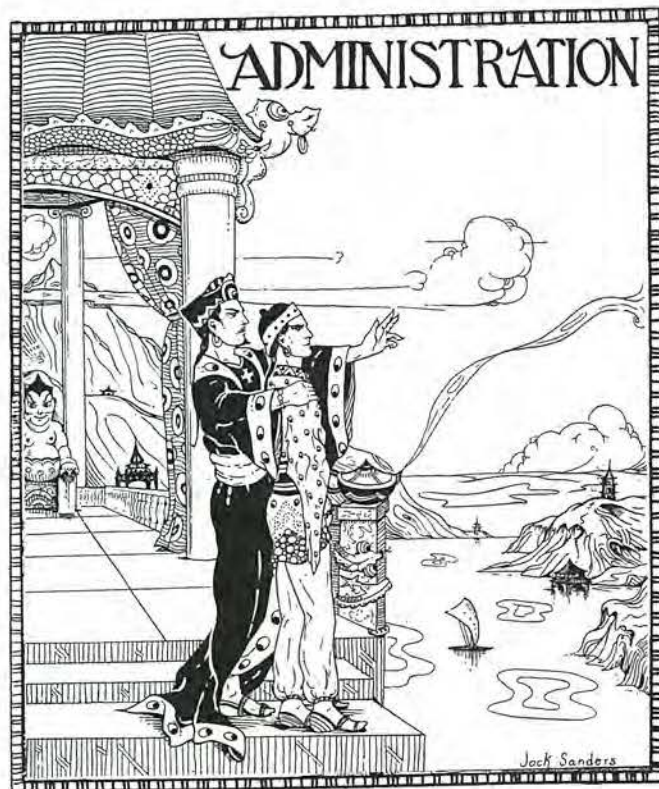
In days of old, Aladdin had a wonderful lamp bringing all the material and spiritual comforts that he fancied. Today we come, not a single Aladdin, but a band seeking our lamp—Education. Our task is far greater than his—our lamp can be won only through years of work, and winning it we must learn to use it wisely. We must ever struggle upward, seeking "the light that never was on sea or land." What the lamp will ultimately bring us, we do not know. But it will surely bring us "to see life steadily and to see it whole."



CONTENTS

- I. Administration and Faculty
- II. Classes
- III. Organizations
- IV. Athletics
- V. College Rumor
- VI. Advertisements





GRIFFON

School Administration



FREDERICK H. BARBEE, B. S., M. S.
SUPERINTENDENT OF SCHOOLS

LEONARD M. HAINES, B. S.
DEAN

CALLA E. VARNER, A. B., A. M.
PRESIDENT

MEMBERS OF ST. JOSEPH BOARD OF EDUCATION

MR. N. S. HILLYARD

MRS. H. W. SANDUSKY

MR. O. A. ZOLLINGER

MR. C. A. GEIGER

MRS. RALPH W. DOUGLAS

MR. W. A. MAXWELL

CRIFTON

Faculty



LOUISE ALLEN
Department of Physical Education
B. S., University of Chicago

ORREL MARIE ANDREWS
Department of Biological Sciences
A. B., Wichita University
A. M., University of Kansas



LEWIS E. ATHERTON
Department of Social Sciences
A. B., A. M., University of Missouri

NELLE BLUM
Department of Education
A. B., Oklahoma University
A. M., Columbia University



R. V. BLOMFIELD
Coach
B. S., Maryville State Teachers' College

HELEN BULLARD BROWN
Department of Modern Languages
A. B., University of New Mexico
A. M., University of Wisconsin
National University of Mexico



MABEL G. COOK
Department of Home Education
A. B., Maryville State Teachers' College
A. M., Columbia University

HASBROUCK DELAMATER, M. D.
Department of Hygiene

GRIFTON

Faculty

G. H. DUERKSEN

Department of Chemistry

A. B., Tabor College

B. S., Southwestern Teachers' College of Oklahoma
Kansas University

RAYMOND ELLIOTT

Department of Music

B. M., University of Kansas

North Texas State Teachers' College

S. E. ELLIOTT

Department of Manual Arts

B. S., Maryville State Teachers' College
University of Missouri

MARY E. B. NEELY

Department of Modern Languages

A. B., Middlebury College

A. M., University of Wisconsin
Sorbonne, Paris, France

GRANT L. PISTORIUS

Department of Physics

B. S., Kansas State Teachers' College
A. M., University of Kansas

EDITH MOSS RHOADES

Department of English

A. B., Wellesley College

A. M., University of Wisconsin

HESTER ROBINSON

Department of Art

A. B., University of Michigan

University of Chicago
California School of Arts and Crafts

MARY FRANCES ROBINSON

Departments of English and Psychology

A. B., University of Michigan

A. M., Washington University



GRIFTON

Faculty



SAMUEL T. SANDERS
Department of Mathematics
A. B., M. S., Louisiana State University

R. E. STONE
Department of Social Sciences
A. B., University of Idaho
A. M., University of Washington



JEAN TROWBRIDGE
Librarian
University of Wisconsin Library School

DONALD E. WILSON
Department of Social Sciences
A. B., A. M., University of Missouri



EMILY WYATT
Department of English
A. B., University of Missouri
A. M., Middlebury College

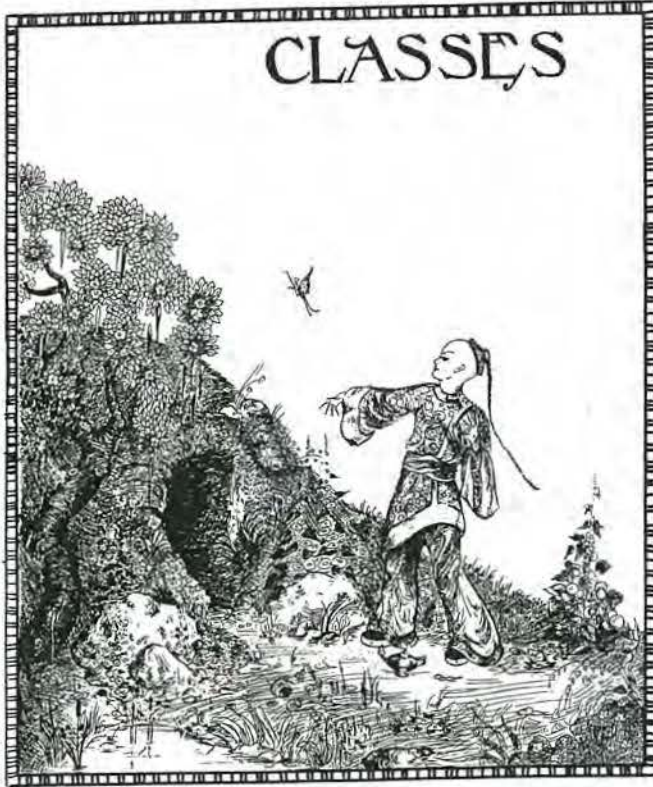
RADIANCE ZOLLINGER
Registrar
A. A., St. Joseph Junior College



SCENE ON A ST. JOSEPH BOULEVARD

CITY HALL, ST. JOSEPH, MISSOURI

CLASSES





GRIFFON

Sophomore Class



KENNETH SHECKLER
PRESIDENT

P. L. BOWERSOX
VICE-PRESIDENT

EUGENE HUFF
TREASURER

HELEN FLANNERY
SECRETARY

We have come far, now, down the pathway; and before us, lighting our footsteps, has always been The Lamp. Now blazing brightly, now flickering dimly, it has urged us—onward, forward, and we have followed

In the past two years it has guided us through work and play—through basketball, baseball, track, dances, the Honor Roll, the Senate, Phi Theta Kappa. It has lighted our way to club meetings; with its flickering flame we have "burned the midnight oil."

And now, oh Freshmen, we leave it to your keeping. Guard and cherish it, and follow ever its beckoning gleam.

For soon, dear old J. C., 'twill be only in dreams that we blend loyal voices

"To sing of your fame and your honor kept bright
Through years when your spirit was our guiding light."

GRIFFON

Classes



ELIZABETH ALLEN

Curly hair—soft voice—willows by a stream—soothing quiet.

DALE ANDERSON

Brown fields—ripe orchards—new mown hay—rustic fences.



THEKLA ANDERSON

Dry humor—sixty-eighth story of Chrysler building—deep lagoon—wrought-iron gates. Cheshire Cheese, '30, '31; Executive Committee, '31; Phi Theta Kappa, '30, '31; Vice-President, '31; Griffon Editor, '31; Penny Whistle Staff, '30; French Club, '30, '31, President '31; Griffon News Staff, '31.

ESTHER ANDRIANO

Brown-eyed susans—ice skates—true blue—fleecy clouds.

Senate, '30, '31; French Club, '30; Capers, '30; Griffon Assistant, '31; Convocation Program Committee, '31.



EARL BEAVER

Striped suits—patent leather—pearl-gray spats—shy smiles.

LEROI BECK, JR.

Test tubes—formulas—satchels—black robe.

Chemistry Assistant; Orchestra.



GRANT BENITZ

Spark plugs—differential—pistons—flywheels. Intramurals.

LILLIAN BLANCHARD

A sandy beach—white-capped waves—swan dives—a spreading ripple.

Cocktails; Intramurals; President W. A. A., '30, '31; International Relations; Spanish Club; Griffon Assistant, '30; Junior College Senate, '30; J. C. Y. W.

GRIFFON

Classes

P. L. BOWERSOX

Mellow pumpkins—frost on a window pane—moonlight.

Intramurals, '30, '31; Basketball, '30, '31; Natural Science Club, President, '31; Vice-President Sophomore Class; Tennis, '30, '31; Boys' Glee Club, President, '30; Capers, '30.

GEORGE BRADFORD

Pine trees on a hill—Kollege Kut-up—clever comments.

Griffon News, '30; Asst. Intramural Manager, '30; Intramural Manager, '31; Griffon Assistant, '30; Basketball, '30, '31; Track, '30; Natural Science Club, '31; Sport Editor Griffon News, '30, '31; Executive Council J. C. Y. M., '31; Capers, '30.

MARY BETH BRINEGAR

Chintz curtains—hot biscuits—blue bells—window plants.

PAUL J. BRYCHTA

Hip boots—hunting lodges—fishing poles.

Freshman Indoor Baseball, '30; Griffon Asst., '30; Sophomore Indoor Baseball, '31; Advertising Manager Griffon, '31; Griffon News Asst., '30.

ELLA CLOUD

Flax—blue china—windmills—red tulips.
French Club; W. A. A.

BENNIE COLLOFF

Research books—thesis—geometric equations—German.

Phi Theta Kappa; Intramurals, '30, '31; Circulation Manager Griffon News.

HARRY CURTIS

Golf clubs—long drives—Skippy—Buster Brown collars.

Senate; Cocktails; Golf Team, '30, '31; Intramurals; Freshmen Hatchet Hop; Dance Committee; Baseball Team, '31; Capers, '30; Cocktail Convocation.

VELMA DENNING

Typewriters—office—hollyhocks—gardens.
Teachers' Guild.



GRIFFON

Classes



AUDRA DICK

A lighted lamp—history papers—red ink.
International Relations Club.



WINONA DICKSON

Winding paths through a wooded grove—
refreshing spring rains—dew-covered violets.
International Relations Club; Spanish Club; Asst.
Literary Editor Griffon News.



DAVID DOWNS

Mr. Pickwick—old curiosity shop
—valises.
Griffon News, '30, '31; Natural Science Club.



HELEN ELISCU

Veiled night—Egyptian sands—silver
bracelets—bright orange.
Advertising Committee "The Queen's Husband";
Capers, '30; Sophomore Capers Committee, '31.



ANNA LEE FINE

Jonquils—tinkling music box
—antique jewelry.
Natural Science Club, '30, '31; International Re-
lations Club, '30, '31; Phi Theta Kappa; Spanish
Club, '31.



POE FISHER

Brown cottage—geraniums in the sun
—quiet brooks.
Phi Theta Kappa; Griffon Staff, '31; Griffon Asst.,
'30; Penny Whistles Staff, '30.



HELEN FLANNERY

English country side—bridle paths
—tweed—airdales.
Cocktails, '30, '31; Spanish Club, '31; Griffon
Asst., '31; Secretary Sophomore Class, '31.



KATHERINE ANN FRASIER

Gingham aprons—hair ribbons—daisy
fields—jumping rope.
J. C. Y. W., '31; Girls' Glee Club, '30; Mixed
Chorus, '31; Teachers' Guild, '31; Natural Science
Club, '31; "Seven to One"; "Singing Girl."

GRIFFON

Classes

ESTHER GEIWITZ

Violets by a brook—rustle of leaves
—green hills.

MARION GIBBONS

Soap-box oratory—boy scouts—harmonicas
—great white way.

Cocktail Club, '30, '31; Capers, '30; Intramurals, '30, '31; Griffon News, '30, '31; "The Queen's Husband"; Dramatic Club, '30, '31; "Sky High"; "Holiday"; "Singing Girl"; President Teachers' Guild.

FAYE GOLDMAN

Russian boots—buttercups—a flower jar.
J. C. Y. W., '30.

ALICE GORDON

Green Chevy—ticket sales
—advertisements.

Senate, '30; Vice-President French Club, '31; Lifetime Pass for Ticket Selling Contest, '30.

ELSIE HAMMER

School rooms—colored paper—blackboards
—window boxes.

Girls' Glee Club, '30; Mixed Chorus, '31; Teachers' Guild; W. A. A., '31; Christmas Program, '30; Operetta; Girls' Glee Club Convocation Program.

LEMMAH LEE HARRISON

Kitten sleeping in the sun—sea shells—iris.
Art Editor Griffon, '30, '31; Cresset Club, Vice-President, '30, President, '31; Teachers' Guild; Art Editor Penny Whistles, '30.

JEAN HAUCK

Fragile teacups—hoop skirts—cameos.
Cheshire Cheese, '30, '31; Treasurer Natural Science Club, '31.

HENRY HAWMAN

Open firesides—books—a pipe
—easy chairs.



GRIFFON

Classes



TRUMAN HENRY

Tops and marbles—straw hats—canoe.

HELEN HERYNK

Cherry blossoms—pussy willows—pinafores.
International Relations Club.



IDA HESSLER

Baseballs—brogans—pioneers.
Intramurals; W. A. A.; Spanish Club.

JOHN HORAN

Phi Theta Kappa—cavaliers—flashing steel.
Phi Theta Kappa, President, '31; French Club,
President, '31.



EUGENE T. HUFF

Texas ranches—lasso—spurs.
Treasurer Sophomore Class.

ASENATH HURST

White cottage—green shutters—dahlias.
Phi Theta Kappa; Cheshire Cheese; French Club;
Griffon News, Asst. Feature Editor; Griffon Staff;
Spanish Club.



ELIZABETH JAMES

Puck—eddying pools—a linnet.
Phi Theta Kappa; Cheshire Cheese; French Club;
Spanish Club; International Relations Club;
Organization Editor Griffon.

BEATRICE JOHNSON

Quiet forests—deep pools—swallows flying.
International Relations Club, '31; Teachers' Guild,
'31; J. C. Y. W., '30, '31.

GRIFFON

Classes

KRUCKER JOHNSON

Airplanes—radios—tinker toys.
Intramurals, '30, '31.

VIRGINIA JUDSON

Rock gardens—rustic bench—yellow roses.
Compton J. C., Los Angeles, California, '30;
Treasurer Literary Club; J. C. Y. W., '31; Teachers'
ers' Guild.

LORENE KIPP

Gypsy trails—red scarfs—splashes of
black and gold.
Cocktails; Teachers' Guild; W. A. A., Secretary
'31; Girls' Intramurals; Volleyball.

JOSEPHINE LAKE

Apple trees—overalls—New Year's
resolutions—ripe cherries.
Cocktails, '30, '31; J. C. Y. W., '30, '31; Convo-
cation Committee, '31; Teachers' Guild; "Seven to
One"; Freshman Baseball, '30; Girls' Intramurals.

PORTER LARSON

Sleepy Hollow—promoters—Intramurals.
Griffon News, '30, '31; Asst. Intramural Mgr., '30;
Asst. Basketball Mgr., '30; Intramural Free Throw
Championship, '30; Intramural Basketball, '30;
Baseball Team, '30; Basketball Manager, '31;
Basketball, '30; Senate, '31; Natural Science
Club, '31; Dramatic Club, '30, '31; "Queen's
Husband"; Asst. Sports Editor Griffon, '30;
Capers, '31.

HUBERT LEVEN

Friendly smiles—tennis courts
—good fellow.

WILBUR McDONALD

Beau Brummel—lace cravats
—walking sticks.

"The Woman Relents"; J. C. Senate; "Twelve
Pound Look"; "Queen's Husband"; "Holiday";
French Club; Student President, '31; Mace; J. C.
Natural Science Club.

LOUISE MAIN

Country roads—glowing campfires
—toasted marshmallows.

Phi Theta Kappa; Cheshire Cheese; Griffon Asst.,
'30; Griffon Staff, '31; Griffon News Staff, '30, '31;
International Relations Club; Spanish Club; J. C.
Y. W.; W. A. A.; Girls' Intramurals.



GRIFFON

Classes



ALICE EVELYN MANSFIELD

Shaded arbors—purple morning glories.
Natural Science Club, '30, '31; Biology Asst.,
'30, '31; J. C. Y. W., '30, '31.

VIRGINIA MARECHAL

Brown leather jackets—cool, green moss
—a lighted window.
International Relations Club, '31; Spanish Club,
'30; French Club, '31; Natural Science Club, '30,
Secretary, '31.

GEORGE MARKLEY

Traveling salesman—J. C. dances
—cheer leaders.
Capers, '30, '31; Dance Committee; Cocktail
Club; Cheer Leader; "Holiday"; Natural Science
Club; Glee Club; Intramurals, '30; Baseball, '30,
'31; "Singing Girl."

HAZEL MAYER

Volleyball—a spangled necklace—peaches
W. A. A.; Griffon Asst., '30; Typist, Griffon
News, '30, '31.

CHARLES MEUGNIOT

Brief cases—books—Frenchmen.

RUTH MILLER

Steinways—musicales—careers.
Phi Theta Kappa, Treasurer, '31; French Club,
'30, '31; Secretary French Club, '31; Girls'
Glee Club, '30; Natural Science Club, '30.

DOROTHY MUDGETT

Carved ivory—orchids—filagree.

WALTER NOLTE

Deep canyons—soldiers—an eagle flying.
Griffon News; Dramatic Club; Cocktails; Glee
Club; Capers, '30; "Holiday"; "The Queen's
Husband"; "The Artist"; Natural Science Club;
Inner Circle College "Y"; Intramurals.

GRIFFON

Classes

MARY FRANCES O'ROURKE

Plantations—lovely old lace—magnolia.
Cheshire Cheese; French Club; Feature Editor
Griffon News; Editor Penny Whistles; Convoca-
tion Committee.

DARYLEEN PAPE

A silver birch—tapestry—emerald green.
Natural Science Club.

IDELLA PARKER

Blue berets—whip-poor-will—house on
top of a hill.

MARGUERITE PARKER

Outdoor girl—March winds
swimming pools.
Girls' Intramurals; Volleyball Mgr., '30; W. A. A.

ERNESTINE PARSONS

Fine silks—lavender—green moss
—old-fashioned lady
Natural Science Club, '30; Girls' Glee Club, '30;
Teachers' Guild, '31.

DALE PERKINS

Briar pipes—sport sweaters—college proms.
Cocktails, '30, '31; Intramurals, '30, '31; "Singing
Girl."

GLEN PERRY

Lumber jackets—dog sleigh—snow shoes.

ALVAH PETERS

Chemist's formulas—vials and tubes
—friendly big tree.



GRIFTON

Classes

MAXINE PHILLIPS

Green shamrocks—a summer night
—etchings—deep sapphires.

Spanish Club, '30; Dramatic Club, '30, '31; J. C. Y. W., '30, President, '31; Girls' Glee Club, '30; Teachers' Guild; "Seven to One"; Griffon News Staff, '30; Sophomore Editor Griffon, '31.

SHERMAN PITLUCK

Concerto—Russian prince—a signet ring.
French Club; Phi Theta Kappa; Natural Science Club; Advertising Mgr. "Queen's Husband"; Editor Griffon News; Capers, '30; "Holiday."

VELMA RAINEY

Snow-capped mountains—Rembrandt
—stained glass window.

Cheshire Cheese, '30, '31; Natural Science Club, '30, '31; Cresset Club, '29, '31; French Club, '31; Spanish Club, '31; Griffon News Staff, '31; Penny Whistles, '29.

WILLIAM S. REDMOND

Ripe strawberry patch—sunny slopes
—a favorite book.

Intramurals; Capers, '29; Convocation Committee, '31; Dance Committee, '31; Basketball, '30, '31; Vice-President Senate, '31.

FRIEDA M. REICHERT

Hardy apples—rich earth—glee clubs.

J. C. Y. W., '31; Mixed Chorus, '31; "Singing Girl"; Christmas Program, '30.

ELWIN ROGERS

Obliging Ford—leather jackets—mechanics.

SIDNEY ROSEN

Law books—judge's robes—philosophy.

NORMAN ST. JOHN

Rustic bridge spanning a mountain stream
—Walt Whitman poetry.

Griffon News; Penny Whistles; Physics Asst.; Phi Theta Kappa; President Cheshire Cheese.



GRIFFON

Classes

DULCIE SCHMIDT

Crocus peeping from beneath the snow
—French gray.

KENNETH SHECKLER

Big business man—riding boots
—rough tweeds—sturdy oak.

President Sophomore Class; Senate, '30, '31;
Business Mgr. Griffon News, '31; Circulation Mgr.
Griffon, '31; Business Mgr. "Queen's Husband";
Business Manager J. C. Prowl, '30.

LEONARD SNOWDEN

A farmhouse—pleasant fields—corn-husking.

JEAN STUART

Fifth Avenue—modernistic furniture
—crystal earrings.

Capers, '29; Dance Committee, '31.

HELEN TANNER

Rock coast—sea gulls—asters.

DOROTHY THOMANN

Gardenias—delicate embroidery
—brown thrush.

Secretary Phi Theta Kappa; Literary Editor Griffon
News; French Club; J. C. Y. W.; Teachers' Guild.

LOUISE THORNTON

Powder blue—ferns—robins.
Teachers' Guild, '31; W. A. A., '30, '31.

HALL TRICE

Tuxedos—silk hats—a mountain crag.
Cocktails, '30, '31; Intramurals, '30, '31.



GRIFFON

Classes



VIRGINIA UTZ

Gay cretonnes—wicker furniture
—a coral necklace.

Griffon News Staff; Art Assistant; Property Committee, "The Queen's Husband."

BETTY VAUGHAN

Blue jay—white satin—formals.

Chr. Committee, Teachers' Guild; Capers, '29.

DELMA FITCH

A deep red rose—dark eyes
—Spanish shawl.

MARY LEE WALKER

Dresden doll—violets—dimples.

Glee Club, '30; J. C. Y. W., '31; Mixed Chorus, '31; Teachers' Guild; "Seven to One"; "Singing Girl."

GRACE WITT

White lilacs—starlit skies—an old-fashioned garden.

Capers, '30; J. C. Y. W., Vice-President, '31; Cheshire Cheese; Spanish Club; Secretary Freshman Class, '30.

GERALDINE WOLFLEY

Fur coats—college pennants—impish eyes.

Cocktails, '30, '31; Freshman Baseball, '30; Girls' Intramurals.

MARGARET WYATT

Clubs—medieval castles—blue velvet.

International Relations Club, President, '31; J. C. Y. W., Treasurer, '30, '31; Alumni Editor Griffon, '31; "Other Side of the Door"; "Seven to One."

MARGUERITE ZIMMERMAN

Russet leaves—marigolds—green-blue sea.
Teachers' Guild.

GRIFFON

Classes

BERNICE BACHMAN

Mauve—a gauzy butterfly—silhouettes.
Girls' Glee Club; Teachers' Guild.

BEATRICE BACHMAN

White lily—whimsical humor—sky blue.
Girls' Glee Club; Teachers' Guild.

HOLLIE BIGGERSTAFF

Basketball—breath-taking shots—Wall Street—big business man.
Basketball, '30, '31, Captain, '31; Mace; Track, '30, '31; Intramural.

BILL BURNETT

Taxidermist—rubber gloves—white uniforms.

BERNICE DAWSON

Blue sky—waving corn tassels—Journalism—sweet williams.
Griffon News Staff; Gazette Correspondent; Chairman Property Committee,
"The Queen's Husband"; Publicity Manager, "Holiday"; Phi Theta Kappa.

ADELAIDE GOLDMAN

Painted plaques—gay plaids—red slippers—an oriole.
Girls' Glee Club, '30; Girls' Swimming Team, '30—Winner; Advertising
Department Griffon News, '30; Christmas Program, '30; Cresset Club, '30.

HAROLD KEARBY

White ivory—physics lab—subtlety—blue prints.
Capers Orchestra, '30; Cresset Club, President, '30.

WILLIAM KENNEY

Leather helmets—soaring planes—miniature cities—safe landings.

E. MELUNEY

English gentleman—London nights—plus-fours.

ANN PATTERSON

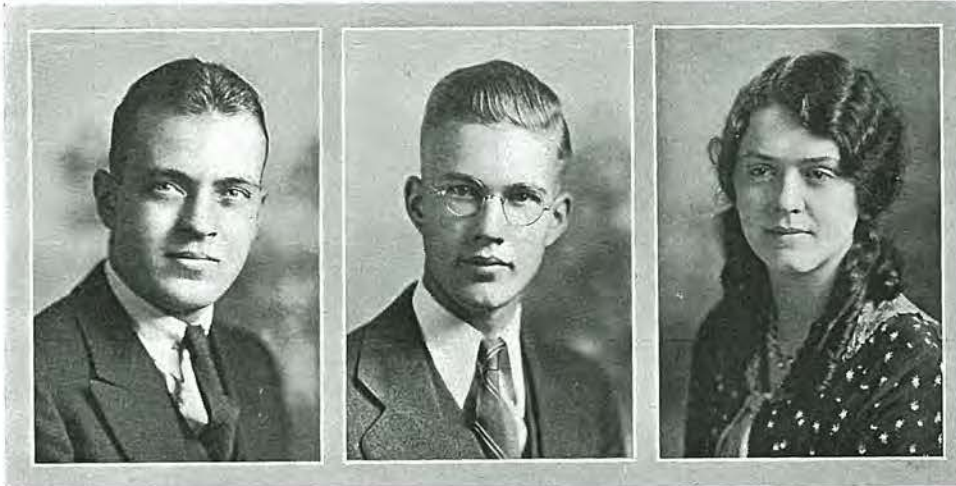
Sport clothes—riding boots—heather—wind-swept plains.
Dramatic Club; Cresset Club; Griffon News; "Holiday"; Capers.

MARGARET HELEN RHINE

Corn tassels—French dolls—snow-balls—swinging garden-gate.
Girls' Intramurals.

CRIFTON

Freshman Class



FERRIS SPOOR
PRESIDENT

WECK LEHR
VICE-PRESIDENT

MAURINE LOE
SECRETARY-TREASURER

We are here! And with our magic lamp! This lamp, however, is not Aladdin's—it is the Freshman lamp. We know, moreover, that our mythical Freshman lamp is quite as powerful in the realm of attainment as was Aladdin's, for it has brought our class of '32 many enviable records and accomplishments. Our Freshman lamp alone, however, cannot receive all of the praise for whatever we may have done in our first year in college. The greater part of our recognition for these successes must be accorded to the faculty and to the students who have made them possible. These students—class leaders, athletes, scholars, actors, and musicians—are the ones to whom we take off our green caps.

We have yelled ourselves hoarse at the pep-meetings and games; we have faithfully followed the traditions of the school; we have turned out strong for the dances; we have burned the midnight oil; we have gone out for basketball, plays, orchestra, chorus, Phi Theta Kappa, Cheshire Cheese, Dramatic Club, and all the other clubs. Now we feel that we have been duly initiated into the society of "College."

GRIFTON

Freshman Class



Albright, Claribel
 Alsbaugh, Jack
 Andres, Dorothy
 Andrew, Frances
 Arthur, Thelma
 Barsch, Gerald
 Blackwell, Mildred
 Bowen, Dorothea
 Bowman, Donald
 Bowman, Homer
 Boyer, Etta Marie
 Bradford, Leroy
 Brady, Irene
 Bratcher, Fannie
 Breit, Donald
 Bristol, Harry

Brooks, Ruth Ann
 Brown, Gertrude
 Butterly, Dorothy
 Byers, Edward
 Cable, Milton
 Canaday, Zarilda
 Cherrington, Ann
 Chesney, Robert
 Clark, Virginia
 Coder, Elizabeth
 Coons, Clifford
 Cooper, Eugene
 Cooper, E. William
 Coopride, Dona
 Crocker, Virginia
 Daily, Robert

Davis, Della Mae
 Davis, Jeannette
 Davis, Lois Ree
 Davison, Marian
 Dawes, M. Frances
 Dawson, Roy
 Didlo, Chester
 Dischner, Donald
 Dorbin, Ruth
 Dougan, Harold
 Duncan, May
 Dunn, Dorothy
 Eggert, Maxine
 Endebröck, Sarah
 Erwin, Gene

GRIFTON

Freshman Class



Fenner, August
 Ferrill, Helen
 Ferris, Deam
 Fisher, Mary
 Fisher, Mary Elizabeth
 Fort, Guerry Louise
 Fox, Hinda
 Francil, Paul
 Frye, La Verne
 Fuller, Catherine
 Furse, Wayne
 Galbreath, Berniece
 Garder, Elizabeth
 Gardner, Fred
 Gilpin, Ray
 Glick, Kathryn
 Goldberg, Herschel

Gregory, Helen
 Groh, Louis
 Gupton, Marguerite
 Hahn, Ruby
 Harpster, Mrs. C. W.
 Hauck, Jack
 Hawkins, Howard
 Hayes, LeRoy
 Herman, Milton
 Hersch, Mary
 Hines, Lillian
 Holcomb, Elizabeth
 Holland, Bill
 Holland, Ruth
 Huersch, Martha
 Hunter, James
 Jutten, Franklin

Kariker, Cecil
 Karol, George
 Kaufman, Harry
 Kelley, Virginia
 Kern, Pauline
 Kimberlin, William
 Kost, Albert
 La Croix, Virginia
 Ladd, Jimmie
 LaMar, Jewell
 Larmer, Elizabeth
 Lehr, Weck
 Lindley, Kathryn
 Lisenby, Martha
 Lockwood, Margaret
 Loe, Maurine

GRIFTON

Freshman Class



Makinson, Hugh
 Mansfield, Ruth
 Manifold, Mabel
 Markley, Katherine
 Mathews, Eleanor
 May, Carl
 Mays, Tom
 McKendry, Mary Catherine
 McNeely, Mary
 Mendell, Anna
 Miller, Jack
 Mitchell, Francis
 Mordaunt, Margaret
 Morton, Mary
 Morton, Joseph

Moyles, Mary Jane
 Muir, Jack
 Myers, Arthur
 Myers, Mary
 Nash, James
 Nelson, Catherine
 Nichols, Jewell
 Nicholas, Paul
 Niday, Benjamin
 Nork, Glenda
 Olney, Ethel
 O'Neill, Jimmie
 Owens, John
 Pearson, Helen
 Petree, Arthur

Plummer, Ruth
 Poole, Anna
 Poor, Erston
 Prindle, Hava
 Rabin, Helen
 Proctor, Catherine
 Reece, Donald
 Reno, Norman
 Rice, M. J., Jr.
 Rice, John
 Richter, Doris
 Riepen, Marguerite
 Rothstein, William
 Ruddy, William

CRIFTON

Freshman Class



Sanders, Jack
 Sauvain, Natalie
 Schindler, Russel
 Schmaltz, William
 Schottel, John
 Schreck, Robert
 Schreiber, LeRoy
 Schreiber, Ray
 Seaman, Elaine
 Seaman, Velma
 Shuster, Erma
 Sidekum, Mary F.
 Siela, Lawrence
 Simstein, Irvin
 Skinner, Phene
 Slusky, Abe
 Smith, Louise
 Smith, Marguerite

Smithers, Robert
 Spoor, Ferris
 Statler, Mary
 Stern, Ruby
 Stuebner, Mildred
 Stuessi, Emily
 Summers, Freddie
 Swafford, Laura
 Swafford, Paul
 Swank, Betty
 Tadlock, Howard
 Taylor, Thurley
 Thompson, Paul
 Thompson, Virginia
 Thorp, Kirk
 Trachsel, Eleanor
 Trachsel, Bernice
 VanAndle, Mary

Wall, David
 Walter, Merl
 Wallingford, Doris
 Ward, Helen
 Wasserman, Herman
 Webster, Mrs. Lucille
 Webster, Milton
 Weed, Helen
 Whitaker, Pat
 Whitchurch, Frank
 Wiley, Della
 Wilke, Milton
 Williamson, Ruth
 Willits, Lorene
 Yager, Lois
 Younker, George
 Zagrodzky, Anita

ORGANIZATION



CRIFTON

Phi Theta Kappa



Back Row: Fine, Fisher, Thomann, Main.
 Second Row: Miller, Myers, Blackwell, Hurst, Bratcher.
 Front Row: Anderson, St. John, Horan, Colloff, Breit, James.
 Other Members: Dawson, Mordaunt, Poor.

"Once upon a time" Aladdin grew tired of holding the lamp; he passed it on to us to guard and keep. This we have done faithfully, as befitted a treasure of such worth.

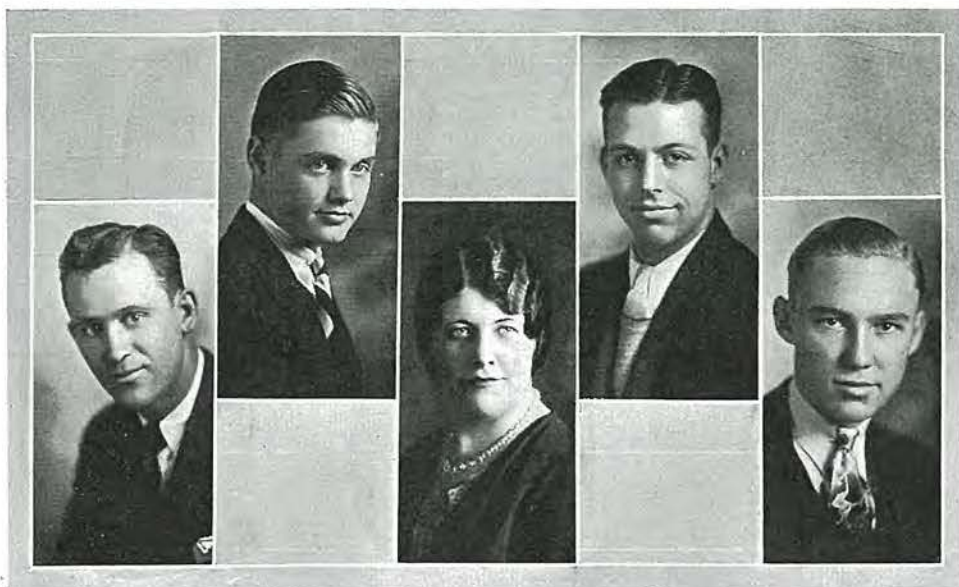
And though the way has at times been difficult, there was always the Lamp to rub, and lo!—treasure stood before us. One time we rubbed it and the genie produced Mrs. Louis T. Golding, who showed us slides of the Cathedral towns of Italy, and another time he brought Mrs. Louise Platt Hauck, who told us about "Being a Writer." He even provided real pickles, steaming hot cocoa, and slightly indigestible "hot dogs" for our fall weiner roast on the old Prospect Hill and in the traditional manner, as a final touch, produced—a spring banquet!

OFFICERS

President	John Horan
Vice-President	Thekla Anderson
Secretary	Dorothy Thomann
Treasurer	Ruth Miller
Faculty Member	Edith Moss Rhoades

GRIFFON

The Mace



BIGGERSTAFF

McDONALD

GORDON

FURSE

GIBBONS

"The Mace" is an honorary organization, the members of which are chosen for their outstanding work for the school in some line of activity.

It was organized in March, 1929, by the Junior College Senate as a means of recognizing leadership in Junior College Activities, and not as an activity organization. This is readily shown by Article III, Section 13, of the Mace Constitution: "Insofar as is humanly possible, the members shall represent the six (or fewer) students who have served Junior College, not only in the most ways, but who have succeeded best in what they have attempted."

We, the members of the Mace, have endeavored to put forth our best efforts in the activities in which we have taken part, and it is our sincere hope that we have lived up to the standard of "The Mace," and to the ideals of our school.

CRIFTON

Junior College Senate



Back Row: Spoor.
 Second Row: Larson, Andriano, Smithers.
 Front Row: Witt, Sheckler, McDonald, Thompson.
 Other Members: Redmond, Curtis, Herman, O'Neal, Rice, Kariker.

Although it has met as usual to discuss and act upon those matters which should come before a student governing body, this year's Senate, unlike its older prototype, has had no important matters of conduct and discipline to consider. It has, however, enforced the rule concerning the restriction of parking cars in the street in front of the building; and it also appointed the dance committee which has functioned so well this year.

Perhaps in all this we owe our good fortune to thee, Aladdin, and to the truly marvelous powers of thy wondrous Lamp. And so, while humbly thanking thee, we dare to rub it, and make the bold wish for succeeding Senates that—the Lamp may aid them as It has aided us!

OFFICERS

President	Wilbur McDonald
Vice-President	William Redmond
Secretary	Grace Witt

GRIFFON

Cheshire Cheese



Back Row: O'Rourke, James.
 Second Row: Moyles, Kelley, Stuebner, Hurst, Proctor.
 Front Row: McNeely, Rainey, Anderson, St. John, Witt, Main, Hauck.
 Other Members: Winona Dickson (Honorary Member).

Just a friendly bunch of J. C. students getting together twice each month to discuss "who's who" and "what's what" in the literary world. Philosophy, biography, poetry, drama, novels, and even bits of nonsense (Stephen Leacock for instance) pass under our microscope and are dissected and trisected—pardon me, I mean, analyzed and synthesized.

Did Sinclair Lewis really deserve the Nobel Prize? And what makes Thomas Mann's "Buddenbrooks" the greatest classic of its day? Why did John Masefield become poet laureate of England, and not Alfred Noyes? How can Marcus Aurelius, a pagan, be quoted today for his Christian-like philosophy? What? You don't know. Then just ask a Cheshire Cheese. He knows.

But lest you think we do only destructive work of criticism, just consult "Penny Whistles"—edition 1931—our lasting memorial in the eyes of the world. Potential novelists, dramatists, critics, poets, dreamers—such are the members of Cheshire Cheese.

OFFICERS

Chairman-Secretary	Norman St. John
Executive Committee	Thekla Anderson, Grace Witt
Faculty Member	Edith Moss Rhoades

GRIFTON

Cresset Club



Back Row: Sanders, Nash.
 Second Row: Ferris, Morton, Smith, Schindler.
 Front Row: Harrison, Rice, Mathews.
 Other Members: Rainey, Moyles, Barsch, Cloud.

A bright orange flame, now burning high, now only a soft red glow, the Cresset is reflected in the mirror of 1930 and 1931. We see a tall flame as the first banquet and initiation ceremony of the year is reincarnated in our memory of a happy evening at the La-na-wah Tea Room. The light fliskers, revealing in its brilliant moments, silhouettes of our inspired creations, thin shadows of fantastic impressions. Perhaps the light dims, but in the dull red glow smoulders the heart of Cresset, ready to leap into flames that touch the heights. May the Cresset ever burn brightly, carried bravely in the hands of those who are deeply and sincerely interested in its purpose—to create and foster appreciation of art.

OFFICERS

President	Lemmah Lee Harrison
Vice-President	Eleanor Mathews
Secretary-Treasurer	Jack Rice

GRIFTON

La Lucecita



Back Row: Rosen, Dawson, May.
 Second Row: Alsbaugh, Main, Hessler, Blanchard, Poor.
 Third Row: Fisher, Fine, Lockwood, Blackwell, James, Andres.
 Front Row: Rainey, Mordaunt, Lehr, Bratcher, Hurst.
 Other Members: Fort, Sauvain, Flannery, Eliscu, Witt.

"Lupita, tu eres hermosa,
 Como los rayos del sol;
 Eres la flor Nicaragua,
 Duena de todo mi amor."

Moonlight, a shadowy courtyard, a tinkling fountain, an iron-grilled balcony, an enamoured serenader picking lightly upon his mandolin, and above—a beautiful Senorita?

But not at all, senor—'tis the Spanish Club—La Lucecita. They reorganized February 10, you know, and at those charming bi-monthly meetings of theirs they always "hablan espanol," and nearly always "cantan los cantos espanoles."

OFFICERS

PresidentWeck Lehr
Vice-PresidentHelen Flannery
Secretary-TreasurerGrace Witt
ReporterVelma Rainey
General Program Committee—Fanny Bratcher, Mildred Blackwell, Elizabeth James, Velma Rainey	
Faculty Member.....Helen B. Brown

GRIFFON

Le Cercle Francais



Back Row: Thompson, Horan, McDonald, Pitluck, Mitchell, Moyles.
 Second Row: Nelson, Marechal, Hurst, Huersch, Gordon, McNeely, Cloud.
 Front Row: Clark, Albright, Rainey, James, Anderson, Bratcher, Kelley, Morton.
 Other Members: Ferril, Holland, Miller, Smithers.

Do you ever pore over the pages of society novels? And do you ever utter all sorts of—er—ejaculations—when you come across the usual freely interspersed French? Well—we used to, too. And then we came to Junior College and learned that by rubbing the Lamp in just the right place we (yes, even we) could learn to "parler francais."

And then one day after we had studied most "awfully" hard, the genie transported us to a meeting of Le Cercle Francais; and we learned to present some "petites scenes," and even to play some "jeux francais." And, oh, yes, we almost forgot—the genie is even teaching us how to gesticulate properly. Perhaps some day he'll teach you, too, so we'll not say "adieu," but—"au revoir."

OFFICERS

President	Thekla Anderson
Vice-President	Alice Gordon
Secretary	Ruth Miller
Treasurer	John Horan
Faculty Member	Mary E. B. Neely

CRIFTON

International Relations Club



Back Row: Johnson, Marechal, Dick, Huersch, James.
Front Row: Fine, Main, Wyatt, Herynk, Blanchard.
Other Members: Mathews, Dickson.

We of the International Relations Club feel that though for us the Lamp may have once burned low, and even been dimmed for a time by the passing of our beloved sponsor, Anne Lowell Wells, yet her living spirit has breathed new strength into it, until it now shines forth yet more brightly than before.

May the Anne Lowell Wells Scholarship, which we have this year founded in her memory, shed as bright and clear a light upon the pathway as she herself did during her lifetime.

OFFICERS

President	Margaret Wyatt
Secretary-Treasurer	Helen Herynk
Faculty Member.....	Lewis E. Atherton

CRIFTON

Natural Science Club



Back Row: Larson, Didlo, Bradford, Downs, McDonald.
 Second Row: Schmidt, Tanner, Pape, Mansfield, Kelley, Thompson, Morton.
 Front Row: Fine, Dorbin, Rainey, Marechal, Bowersox, Hauck, Rabin, Zagrodzky, Fitch.
 Other Members: Reece, Pitluck, Wall, Frasier.

Yum, yum. 'Member that dandy candy we used to crowd to buy? And those food and rummage sales? And the bridge party? All the Natural Science Club's!

And that isn't nearly all, either. For there were monthly meetings with discussion programs of a biological and astronomical nature (but never lectures); and there were parties and outings; there was the annual spring tea; and—there was the Children's Museum.

OFFICERS

President	P. L. Bowersox
Vice-President	Dulcie Schmidt
Secretary	Virginia Marechal
Treasurer	Jean Hauck
Faculty Member.....	Orrel M. Andrews

GRIFTON

J. C. Y. W.



Back Row: R. Mansfield, Reichert, A. Mansfield, Olney, Judson.
 Second Row: Main, Lake, Coopridier, Zagrodzky, Walker, Schmidt.
 Front Row: Hahn, Plummer, Witt, Phillips, Wyatt, Huersch, Loe.
 Other Members: Weed, Lockwood, Johnson, Frasier.

Even Aladdin, we fear, cannot be omnipresent. But he is undoubtedly most fortunate in having this year such an able assistant as the J. C. Y. W.

This group of girls opened the year with a tea for all J. C. girls; they provided a Christmas basket for a poor family; they presented two convocation programs: "The Other Side of the Door," and "Seven to One." But perhaps best of all—and we're certain that Aladdin fairly sighed with relief when they removed from his shoulders this burden—they conducted the Book Exchange at the opening of the fall and spring terms.

The meetings of this group consisted of speeches by those who are interested in girls' problems, and of discussions. Two of their novel social features were a Hallowe'en "Kid" party, and a chili supper previous to a basketball game.

OFFICERS

President	Maxine Phillips
Vice-President	Grace Witt
Secretary	Helen Weed
Treasurer	Margaret Wyatt
Advisory Board.....	Miss Nelle Blum, Miss Emily Olsen, Miss Emma Nelson

GRIFTON

Teachers' Guild



Back Row: Mayer, Walker, Hammer, Geiwitz.
 Second Row: Duncan, Parker, Zimmerman, Tanner, Denning, Frasier.
 Third Row: Gupton, Thornton, Crouch, Thomann, Fitch.
 Front Row: Parsons, Kipp, Gibbons, Vaughn, Johnson.
 Other Members: Bernice Bachman, Beatrice Bachman, Harrison,
 Judson, Lake, Phillips, Swafford, Trachsel.

As in olden times the apprentices of medieval guilds learned from the masters of their trade, so we, the sophomore students of the Department of Education, have banded together that we may learn from the professionals in our field.

We have called our club the "Teachers' Guild," and since its organization in 1926 our members have all striven mightily to fulfill our purpose—to obtain first-hand information about Teaching Projects. And in our success we feel we almost rival those old guilds whose fame has traveled down the ages.

OFFICERS

President	Marion Gibbons
Secretary-Treasurer	Lorene Kipp
Faculty Member	Nelle Blum

CRIFTON

School of Nursing



Back Row: Duncan, Johnston, Duerksen, Painter, Wickizer.
 Second Row: Smart, Winkler, Temple, Downing, Patton, McDaniel.
 Third Row: Foster, Marriott, Weddle, Feigenbaum, Potter, V. Jones, Moser.
 Front Row: Beckwith, D. L. Jones, Boswell, McKee, Richey, Dittimore, Nevins, Casey.

The Junior College endeavors to reach out into the community and serve definite community needs. An experiment in that line is being tried this year in the teaching of a course in Chemistry to the Freshman students of the Missouri Methodist Hospital School of Nursing. Mr. G. H. Duerksen is the instructor.

The students in this class include: Bernadine Beckwith, Wheeling, Mo.; Sarah Boswell, Salem, Neb.; Coy Casey, Clio, Ia.; Lola May Dittimore, Severance, Kan.; Dorothy Downing, DeKalb, Mo.; Mercedes Duncan, Fillmore, Mo.; Bernice Feigenbaum, Hiawatha, Kan.; Noma Foster, Faucett, Mo.; Rosa Johnston, Manderson, Wyo.; Donna Lee Jones, St. Joseph; Virginia Jones, St. Joseph; Margaret McDaniel, Faucett, Mo.; Sarah McKee, St. Joseph; Beulah Marriott, Trenton, Mo.; Arlene Moser, St. Joseph; Rachel Nevins, Maitland, Mo.; Jean Painter, St. Joseph; Louise Patton, McFall, Mo.; Margaret Irene Potter, Turney, Mo.; Jean Richey, Maysville, Mo.; Louisa Smart, St. Joseph; Norma Temple, Hiawatha, Kan.; Marguerite Weddle, Stewartsville, Mo.; Marjorie Wickizer, Jamesport, Mo.; Ruth Winkler, Atchison, Kan.

GRIFTON

J. C. Cocktails



Rack Row: P. Wolfley, Sanders, Trice, Perkins, Lisenby.
 Second Row: Clark, Lake, Kipp, G. Wolfley, Flannery, Blanchard.
 Front Row: Lehr, Muir, Gibbons, Rice, Wilke.
 Other Members: Biggerstaff, Bowersox, Nolte, McKendry, Markley.

Cocktails—ah, what connotations that word arouses! And don't think the J.C. Cocktails lack any of the "kick" and "punch" of the original. In fact, to quote our worthy president, "The Cocktails are behind everything!"

The purpose of the club is to support the basketball team in every possible manner. And how! This year we helped in the sale of season tickets, gave a party for the team, held pep meetings, and generated pep and enthusiasm both at school and at games. As a grand finale, we wound up the year's work with a big celebration—cocktails and all the trimmings.

OFFICERS

President—Chief Cocktail.....	Marion Gibbons
Faculty Member.....	Samuel T. Sanders

CRIFTON

Orchestra



Back Row: Breit, Henry, Marti, Ferris, Kost.
 Second Row: Taylor, Beck, Davis, Elliott, Snowden, Thorp.
 Front Row: Wiley, Riepen, Davis, Shuster, Nork, Dorbin, Holcomb.
 Other Members: Pitluck, Perry, Swafford, Whitchurch, Johnson, Proctor.

Who played the accompaniment for "The Singing Girl?" Who furnished music between the acts of the all-school play, "Holiday?" Who furnished the convocation program on April 8? Who played between the acts of the Little Theater's presentation of the "Royal Family?" Who played those stirring strains which brought us up, up, up those flights upon flights of steps on Convocation Days? Who brought us to our feet with a thrill at the first notes of our school song? And who, by a cheerful and lively tune hurried our lagging feet back to classes—and to work? Who, you ask? Why—THE ORCHESTRA.

OFFICERS

Director.....	Raymond Elliott
Librarian	Krucker Johnson
Accompanists.....	Marguerite Riepen, Thurley Taylor

CRIFTON

Dramatic Club



Back Row: Manifold, Clark, Patterson.
Front Row: McDonald, Lisenby, Nolte.
Other Members: Galbreath, Gibbons, Larson, Lyle, Phillips, Rice, Trachsel.

The purpose of the Dramatic Club is to increase appreciation of the drama by study and by acting. Admission to the club is gained only after careful tryouts.

During the first semester seven meetings were held at the homes of various members. The programs consisted of the presentation of the one-act play, "The Minuet"; the study of the life and works of Henrik Ibsen, and a review of his play, "Hedda Gabler"; the study of Bernard Shaw's life and works, and a review of his play, "The Devil's Disciple"; the study of the life and works of James Barrie, and a review of his play, "The Admirable Critcheon"; reviews of the current productions, "Roar China," "Elizabeth, the Queen," "Green Pastures," "Death Takes a Holiday"; and sketches of the lives of Walter Hampton and David Belasco.

During the second semester the club sponsored a convocation program, presenting a one-act play entitled "Done In."

OFFICERS

President	Wilbur McDonald
Vice-President	Martha Lisenby
Secretary-Treasurer	Eleanor Trachsel
Faculty Member	Emily Wyatt

GRIFFON

Mixed Chorus



Back Row: Henry, May, Ferris, Kost, Marti.
 Second Row: Daffron, Davis, Ferguson, Elliott, Webster, Thorp.
 Third Row: Hahn, Coopridner, Plummer, Olney, Willits, Reichert, Loe, Riepen, Fuller, Wiley.
 Front Row: Taylor, Lockwood, Garder, Holcomb, Mordaunt, Walker, Huersch, Stuessi, Seaman.
 Other Member: Allen.

The youngest of our organizations, the Mixed Chorus, is by no means the least successful. By some it has been called the most "wide-awake" organization in Junior College.

Singing here, singing there, like the jongleurs of old the members of the chorus have provided many hours of entertainment for their various audiences. They have sung at the high schools, at the Missouri Theatre, at the Robidoux Hotel, at the St. Joseph Teachers' Institute, at the Doniphan County Musical Festival.

Versatile? From merry England they have revived the old, old custom of Yuletide caroling; they have "crooned" over the "mike"; they have delighted the audiences of their own college; and with their hay ride and their parties they have seen to it that "Jack" isn't a dull "boy."

As a fitting climax to a most successful year, on May 7 they presented a three-act comic operetta, "The Singing Girl."

OFFICERS

President	Milton Webster
Vice-President	Elizabeth Holcomb
Treasurer	Kirk Thorp
Librarian	Deam Ferris
Reporter	Norman Marti
Director	Raymond Elliott

CRIFTON

"The Singing Girl"



Musical Comedy in Three Acts by Victor Herbert

CAST

Greta	Catherine Fuller
Count Otto	Milton Webster
Prince Pumpnickel	Deam Ferris
Stephen	Marian Gibbons
Aufpassen	Milton Herman
Lady Marie	Margaret Mordaunt
Frederick	Albert Kost
Governor Rudolph	Rex Shaver
Elsa	Elizabeth Garder
Mina	Elizabeth Larmer
Katrina	Dona Coopridier
Margaret	Elizabeth Allen
Elizabeth	Maurine Loe
Alma	Betty Swank

Chorus of Thirty Voices—Della Wiley, Lorene Willits, Katherine Frasier, Ruth Plummer, Elaine Seaman, Ruby Hahn, Virginia LaCroix, Elsa Hammer, Helen Weed, Mabel Manifold, Emily Stuessi, Mary Lee Walker, Martha Jane Huersch, Margaret Lockwood, Elizabeth Garder, Lois Ree Davis, Mary Van Andle, Kirk Thorp, Carl May, Dale Perkins, William Rothstein.

Accompanists

Director

Margaret Riepen and J. C. Orchestra

Raymond Elliott

GRIFTON

"Holiday"



A brilliant and delightful comedy in three acts, Philip Barry's "Holiday," was presented on February 27 as the all-school play.

"Holiday" is the story of young Johnny Case, and of Linda and Julia Seton. The Setons are a family of great wealth and social distinction and Johnny is engaged to Julia. But Johnny is a "man of the Peepul," and when he rather unexpectedly makes \$40,000 in the stock market, he plans to take Julia to Europe and spend his tidy little sum in exploring life for himself. Julia and her father, however, finds the plan quite mad, and because Johnny prefers to enjoy life as a holiday, as an independent adventure in happiness, he and Julia separate.

But all the time there has been the younger sister, Linda—Linda, who understands—Linda, who loves Johnny.

And so Johnny gets his "Holiday," and Linda gets her Johnny, and we suppose that "they all lived happily ever after."

Anyway, it was a grand play!

CAST

Edward Seton.....	Walter Nolte
Julia Seton.....	Virginia Clark
Linda Seton.....	Martha Lisenby
Johnny Case.....	Wilbur McDonald
Ned Seton.....	George Markley
Laura Cram.....	Laura Swafford
Seton Cram.....	Sherman Pittluck
Nick Potter.....	Marion Gibbons
Susan Potter.....	Ann Patterson
Henry.....	David Wall
Charles.....	Milton Wilke
Delia.....	Margaret Mordaunt

GRIFTON

Penny Whistles Staff



Back Row: Dickson, Proctor, Kelley, Anderson.
Front Row: Hurst, Hauck, St. John, O'Rourke, Stuebner.
Other Members: Pitluck.

It was our own beloved "R. L. S." who once remarked that "although we cannot all play an æolian harp, we can at least toot upon a Penny Whistle."

But the book for which Stevenson had once considered "Penny Whistles" as title went to press under another name. And we in our turn have chosen it as a fitting title for our modest expression of literary talent—the Junior College literary magazine, which the members of Cheshire Cheese have successfully sponsored for the past four years.

And so we toot joyfully upon our Penny Whistles, in the bright hope that there may some day come one who from practice on it will learn to play the æolian harp. And who can say that our dream shall not come true?

THE STAFF

Editor.....	Mary Frances O'Rourke
Sophomore Assistant.....	Jean Hauck
Freshman Assistant.....	Mildred Stuebner
Business Manager.....	Norman St. John
Typist.....	Virginia Kelly
Other Members: Thekla Anderson, Winona Dickson, Asenath Hurst, Catherine Proctor, Sherman Pitluck.	

GRIFFON

Griffon News Staff



Back Row: Bradford, Leven, St. John, Downs, Rice, Colloff, Alsbaugh, Nolte.
 Second Row: Pittluck, Karol, Thomann, Proctor, Moyles, McNeely, Hurst, O'Rourke, Larson, Kaufman.
 Front Row: Kariker, Ward, Rainey, Mayer, Dickson, James, Clark, Main, Sheckler.
 Other Members: Dawson, Utz, Anderson, Marti, Myers, Marechal, Bowman, Lisenby, Lindley.

Aladdin and his lamp have brought about mighty doings at Junior College this year—doings of which the world must be told. And from basketball games through dances and convocation programs to the Honor Roll and Phi Theta Kappa we have done our utmost to "spread the news."

And so, although we are just the record-keepers of the Lamp's activities, we think that perhaps we deserve some small niche in the hall of "Organizations" as Scribes of The Lamp.

THE STAFF

Editor-in-Chief	Sherman Pittluck
Associate Editors	Martha Lisenby, George Karol
News Editor	Virginia Clark
Literary Editor	Dorothy Thomann
Assistants	Velma Rainey, Winona Dickson
Feature Editor	Mary Frances O'Rourke
Assistants	Asenath Hurst, Mary Jane Moyles
Personal Editor	Homer Bowman
Sports (Boys)	George Bradford
Assistant	Herbert Leven
Sports (Girls)	Louise Main
Exchanges	Helen Ward
Art Editor	John Rice
Reporters—Bernice Dawson, Porter Larson, Mary McNeely, Harry Kaufman, Cecil Kariker, David Downs, Virginia Utz, Thekla Anderson, Mildred Stuebner, Norman Marti, Walter Nolte, Virginia Marechal, Mary Myers.	
Business Manager	Kenneth Sheckler
Advertising Manager	Harry Kaufman
Assistants	Kathryn Lee Lindley, Laura Swafford
Circulation Manager	Bennie Colloff
Typist	Hazel Mayer
Faculty Advisor	Mary Robinson

GRIFFON

Griffon Assistants



Back Row: Downs, Andriano, Hurst, Kaufman.
Second Row: Fisher, Kelley, Crouch, Morton, O'Rourke.
Front Row: McNeeley, Smith, Rice, Loe, Proctor.

We've done so many of these write-ups that we find we haven't left a single, solitary idea to use in praise of ourselves. (For of course we were polite and did everyone else first.)

But before our names are lost in the shades of oblivion (trite!) may we suggest that we'd like awfully to have inscribed over our memory the single phrase:

"Faithful unto [or perhaps we should say—until] life—the life of the annual."

For we've written praises of your organizations until our heads ached; we've drawn illustrations until our hands became cramped; we've telephoned people until now we're even afraid to call our own friends lest the operator recognize our voices; we've typed until—but enough—we're modest, you see.

Yet let it not be thought that we did not strive joyfully and gladly to contribute our small part towards the success of this, the Griffon of 1931.

GRIFFON



Back Row: Anderson, Karol.
Second Row: Harrison, Brychta, James, Phillips, Sheckler.
Front Row: Wyatt, Kariker, Main, Fisher.

We, the members of the Griffon Staff, wish to thank all those who have helped build this Griffon. To the students, faculty, advisors, assistants, advertisers, printers, engravers, patrons, and hosts of others, chief credit for any measure of success which the Griffon might attain, is due. We are most grateful for everything they have done.

THE STAFF

Editor-in-Chief	Thekla Anderson
Business Manager	George Karol
Art Editor	Lemmah Lee Harrison
Advertising Manager	Paul Brychta
Organization Editor	Elizabeth James
Sophomore Editor	Maxine Phillips
Circulation Manager	Kenneth Sheckler
Alumni Editor	Margaret Wyatt
Boys' Athletic Editor	Cecil Kariker
Girls' Athletic Editor	Louise Main
Typist	Poe Fisher
Faculty Advisors—Lewis E. Atherton, Miss Hester Robinson, Miss Edith Moss Rhoades	

ATHLETICS



CRIFTON

Athletic Department



PORTER LARSON
BUSINESS MANAGER



LEONARD HAINES
ATHLETIC DIRECTOR



RAY BLOMFIELD
VARSITY COACH



GEORGE BRADFORD
INTRAMURAL MANAGER

Coach Blomfield has finished his second year with Junior College. Both years he has enjoyed successful teams in basketball and track. Ray is certainly well qualified for his task as he has lettered in many sports at Maryville State Teachers' College.

Leonard Haines is the director of Junior College's athletic affairs. He arranges the schedules for our basketball games and track meets.

Porter Larson's duty consists of all business matters confronting the team on their trips. Jimmy Nash was Larson's assistant in looking after the personnel of the team.

George Bradford has filled his position in such a way that intramurals has been very successful and interesting throughout the year.

When Wilke and Markley lead J. C. cheers everyone feels that impulse to yell his best.



GEORGE MARKLEY

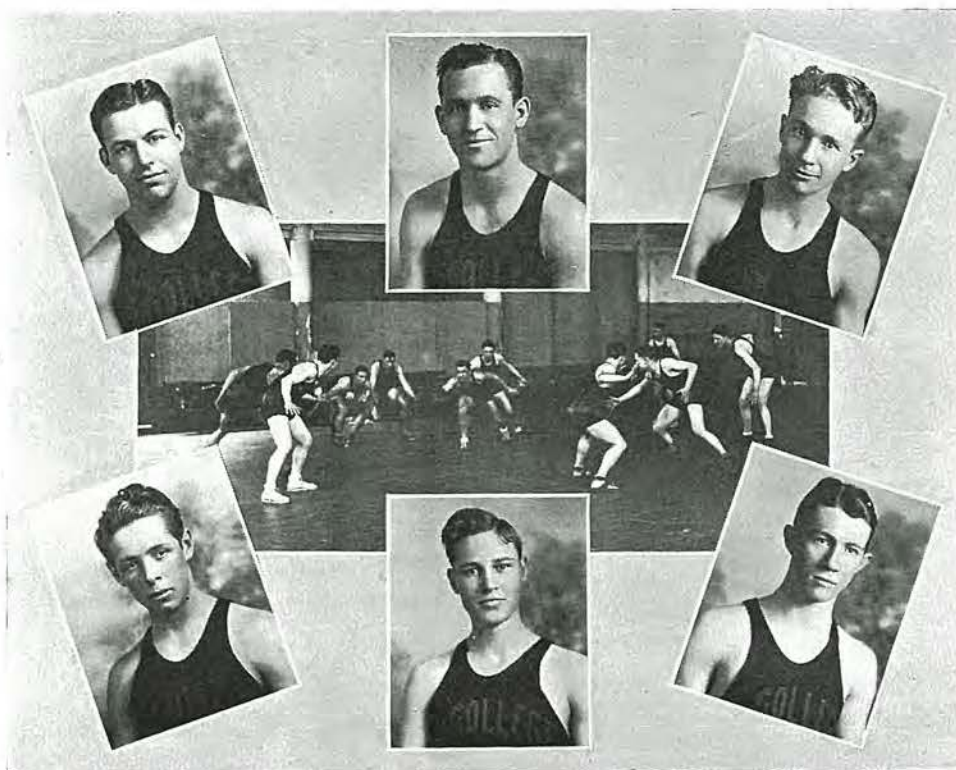


CHEERLEADERS



MILTON WILKE

GRIFFON



WAYNE FURSE
HARRY CURTIS

HOLLIE BIGGERSTAFF, Captain
EUGENE HUFF

CECIL KARIKER
P. L. BOWERSOX

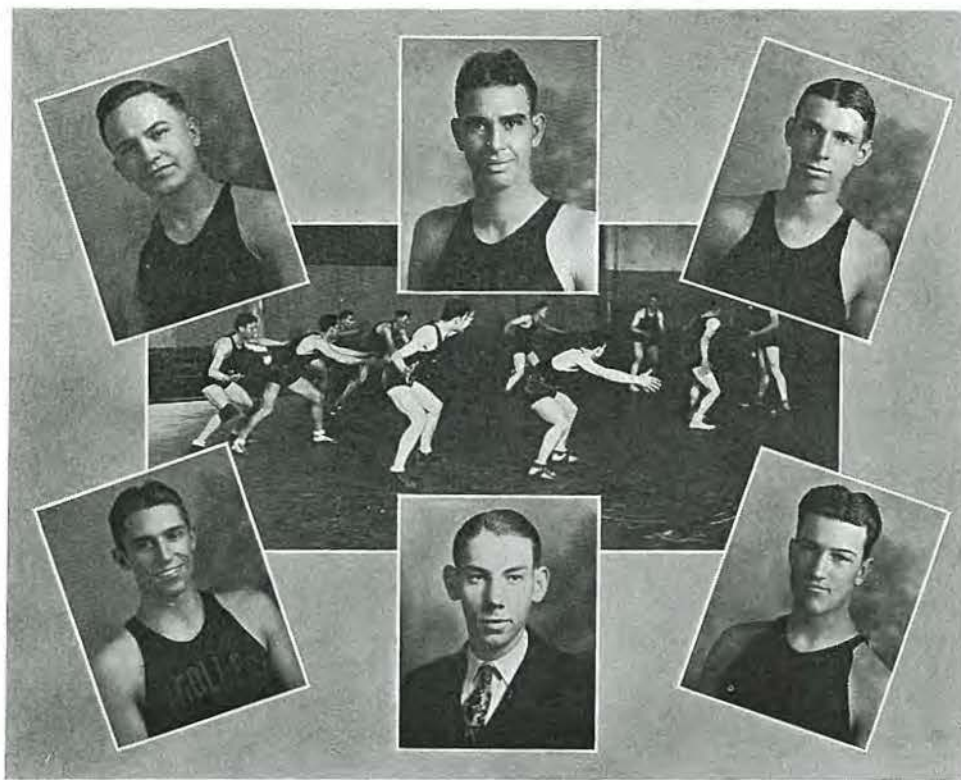
Basketball Review

The Junior College Griffons played a hard schedule of nineteen games against several strong college quintets. With Coach Blomfield, Junior College won eleven games and lost eight. The team showed that it had been well-coached in many games, but some of the court battles were a little ragged. The review of the season shows every letterman played at least one outstanding game.

Basketball letters were awarded to eleven men this year: Captain Hollie Biggerstaff, P. L. Bowersox, Eugene Huff, Wayne Furse, Harry Curtis, Russel Schindler, Cecil Kariker, Donald Reece, William Redmond, Raymond Gilpin, and Lawrence Siela. Student manager sweaters were awarded to George Bradford and Porter Larson. James Nash was assistant manager.

The first opponent of the year was the Kansas City Dental College. This was one of the Griffons' outstanding performances of the year. Only four K. C. players could penetrate the set defense during the entire game. On the offense Kariker played his outstanding game of the year, counting over half of the team's score, and as much as the entire visiting team made during the game. Captain Biggerstaff and Siela were also instrumental in the team's 28 to 15 win.

GRIFFON



WILLIAM REDMOND
RAYMOND GILPIN

LAWRENCE SIELA
JAMES NASH

DONALD REECE
RUSSEL SCHINDLER

Biggerstaff and Siela led the Griffons' attack upon Conception College and aided by the baskets of Bowersox, Schindler, and Kariker, the score was 21 to 12 at the finish. In the next game, the first defeat of the season was handed the Junior College quintet by the Chillicothe Business College, by a 22 to 11 score.

In the fourth, the Kirksville Teachers eked out a 23 to 22 victory over the fighting St. Joseph team. If Pettigrew had been held down, the baskets made by Biggerstaff, Gilpin, Kariker, Reece, and Siela would probably have been sufficient to overwhelm the teachers. Gilpin was outstanding in this game, making three long shots.

Captain Biggerstaff again got hot when J. C. won from Clarinda by a score of 43 to 14, making seventeen points. Reece, Bowersox, and Redmond aided the lopsided win with their several two-pointers.

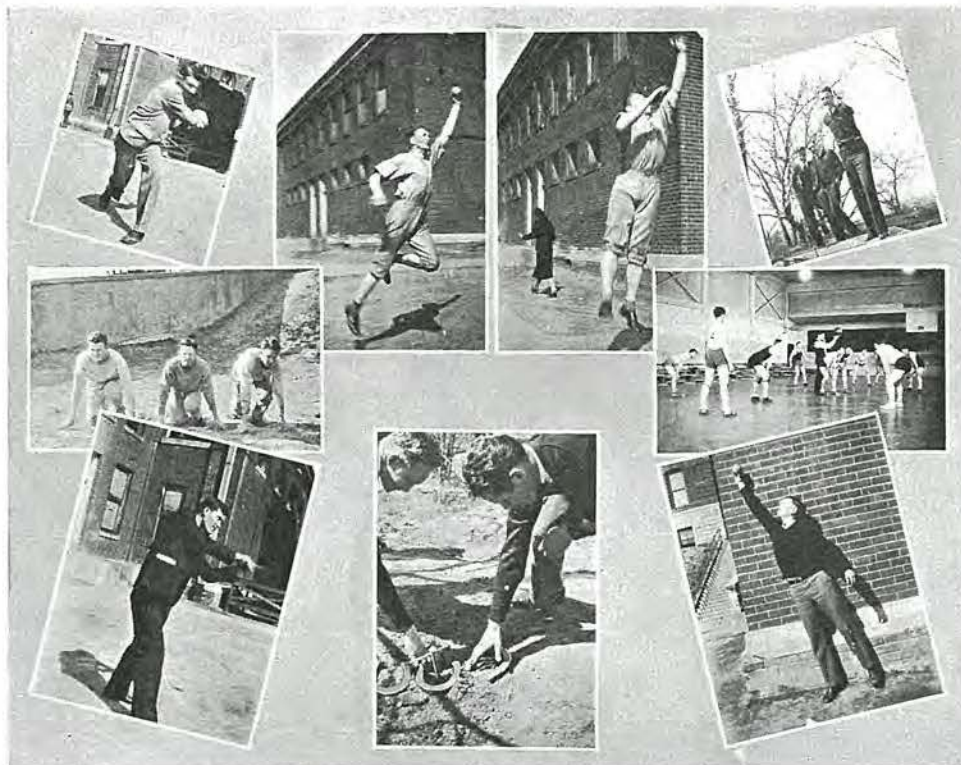
GAMES WON

Kansas City Dental College	15; Griffons, 28
Conception College	12; Griffons, 21
Clarinda	14; Griffons, 41
Trenton	16; Griffons, 17
Clarinda	12; Griffons, 40
Conception	14; Griffons, 23
Lincoln and Lee	31; Griffons, 31
Kidder	22; Griffons, 26
Lamona	18; Griffons, 23
Kidder	19; Griffons, 25
Lamona	21; Griffons, 36

GAMES LOST

Chillicothe Business College	22; Griffons, 11
Kirksville Teachers' College	23; Griffons, 22
Trenton	28; Griffons, 22
Kansas City J. C.	23; Griffons, 13
Chillicothe	14; Griffons, 11
Cape Girardeau	22; Griffons, 18
Wentworth	26; Griffons, 23
Kansas City J. C.	39; Griffons, 31

GRIFTON



INTRAMURAL GAMES

This year's intramural basketball tournament found seven teams entered for competition. The games were all played at Hillyard's gymnasium.

In the first round, team number 1, captained by Masteller, lost to Siela's quintet by a 11 to 6 score. Bowersox's team met Didlo's cagers and won 11 to 9. In another game Huff's team held Gilpin's court rambles to a lone field goal in winning 28 to 2.

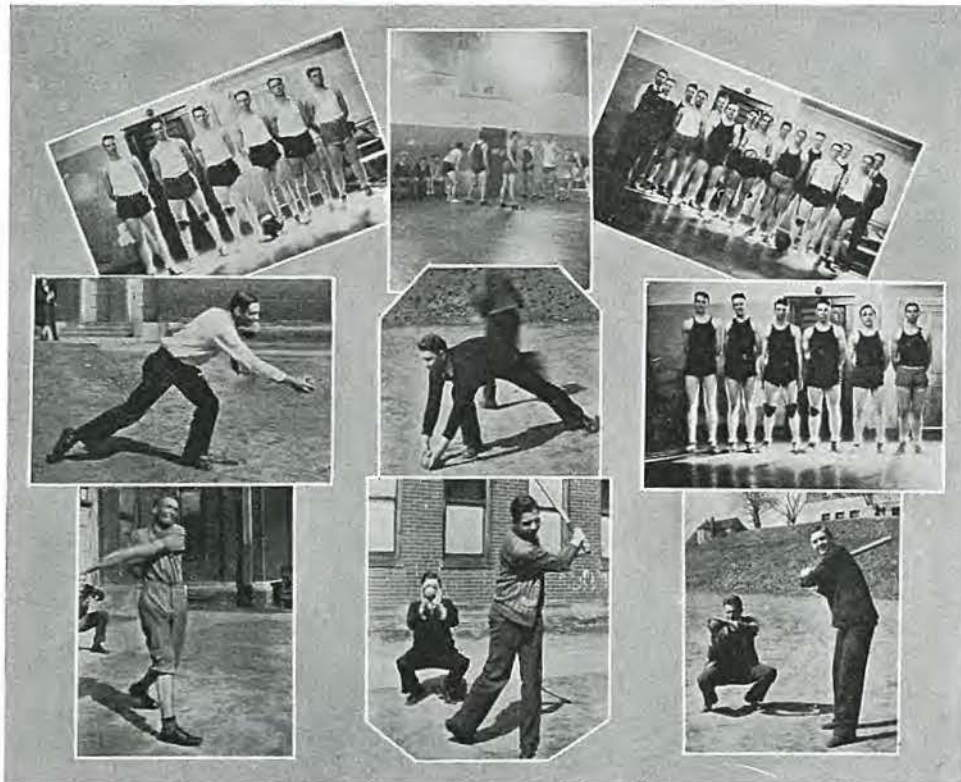
The second round results included only one contested game, that being a 10 to 9 decision by Bowersox over Huff. Biggerstaff forfeited to Siela after having drawn a bye in the first round.

Consolation playoffs were won by Didlo's team, defeating Gilpin 22 to 15 and Masteller 25 to 8. Masteller had only four men to hold down Didlo's sharp shooters.

Bowersox defeated Siela in a hard-fought final round by an 18 to 14 tally. The score at the beginning of the last quarter was tied, but Bowersox finally pulled away to win. Siela, like Masteller, had only four men for the game.

Bowersox took high scoring honors with 22 to his credit during the tournament. He was closely followed by Schindler, Reece, and Kariker, each chalking up 19 points to tie for second scoring honors.

GRIFFON



A round robin tournament was started in intramural baseball on September 25, 1930. The opening game was won by Schindler's team by a 5 to 2 score, Bowersox's team losing. The second game resulted in a 13 to 3 win for Redmond's team over Sheckler's team. Miller hit the first home run of the tournament in this game. Then Huff's team met defeat at the hands of Kariker's team in an 8 to 2 game that was decided in the first inning. On October 7, Kariker's team was subdued by 9 to 6, although outhitting Bowersox's outfit 12 to 11. Sheckler's team was pounced upon by Schindler's crew, and lost a 17 to 3 landslide. Leven let the losers down with three scattered hits.

One of the closely contested games of the season was won by Redmond's team in the last inning of a 4 to 3 game when Francil who pitched for Huff's men, walked in the winning run. Although outhit, Redmond's team won their second game of the season by running up a 5 to 2 advantage over Schindler's outfit. This was Schindler's only defeat of the regular season. Redmond then won the season's first shut-out game, defeating Bowersox 6 to 0. Masteller allowed only two hits in the best pitching performance of the year in this encounter.

The rest of the season's games, in the order played, produced wins for Redmond's, Schindler's, Bowersox's, Kariker's, and Huff's teams. It was Kariker's win over Schindler's team that caused a play-off between his team and Redmond's, in which Redmond won the championship by a 10 to 6 score. The season closed with the Freshmen winning over the Sophomores in an interclass game.

CRIFTON



INTRAMURAL INTERESTS

Each year a cup is awarded to the J. C. student who makes the most points in intramural sports. Wayne Furse won this cup in 1930. In capturing the second place cup, Paul Bollinger repeated his performance of his freshman year. The intramural winners for 1931 will not be determined until about graduation time, but at present several students are running neck and neck for the honors.

The popularity of J. C. Intramurals is assured; practically every boy enters at least one athletic activity and some boys enter several events. This opportunity to take part in college athletics will be offered as long as boys show as much interest as they have shown this year.

Although baseball takes up the most time and accommodates the most boys, much interest is shown in basketball, horseshoes, free throw contests, tennis, handball, and track. The interest developed in track led to the formation of a varsity track team last year, and this team had a good season under Coach Blomfield. Ray Blomfield took four men to the state track meet for colleges at Columbia, Missouri, March 28, 1931, and won third place. Schreck won first place in the 60-yard low hurdles; Biggerstaff took another first in the shot put; the 880-yard relay, composed of Furse, Schreck, Groh, and Biggerstaff, placed third. Eight colleges were represented in the meet.

GRIFTON

Women's Athletic Association



LILLIAN BLANCHARD
President of Women's Athletic
Association



MADELEINE McDONALD
Advisor of Women's Athletic
Association



MINNIE REITAL
Intramural Champion
1930

It started last year, this jolly organization, open to all girls of Junior College. It started when a small but determined group of Freshmen and Sophomores began to raise the question, "Why can't the Junior College girls have sports too?" They could, said the Dean, if enough girls came out to make it worth while. And have they come out? I should say so! The Women's Athletic Association is an infant among Junior College organizations, but it is a very lusty infant. Never yet have we lacked enough players to make up a round-robin tournament in every sport.

Each spring the members meet and elect a president who has general charge of all sports, a vice-president who keeps a record of points earned, a secretary-treasurer, and a reporter. Besides these officers each individual sport has a manager who keeps a record of the points won in her sport and helps select team captains and make drawings for games.

The games are organized on much the same plan as those of the boys. They are divided into major and minor sports and outings. Major sports comprise volleyball, basketball, swimming, and baseball; minor sports—horseshoes and tennis; outings—skating, hiking, etc.

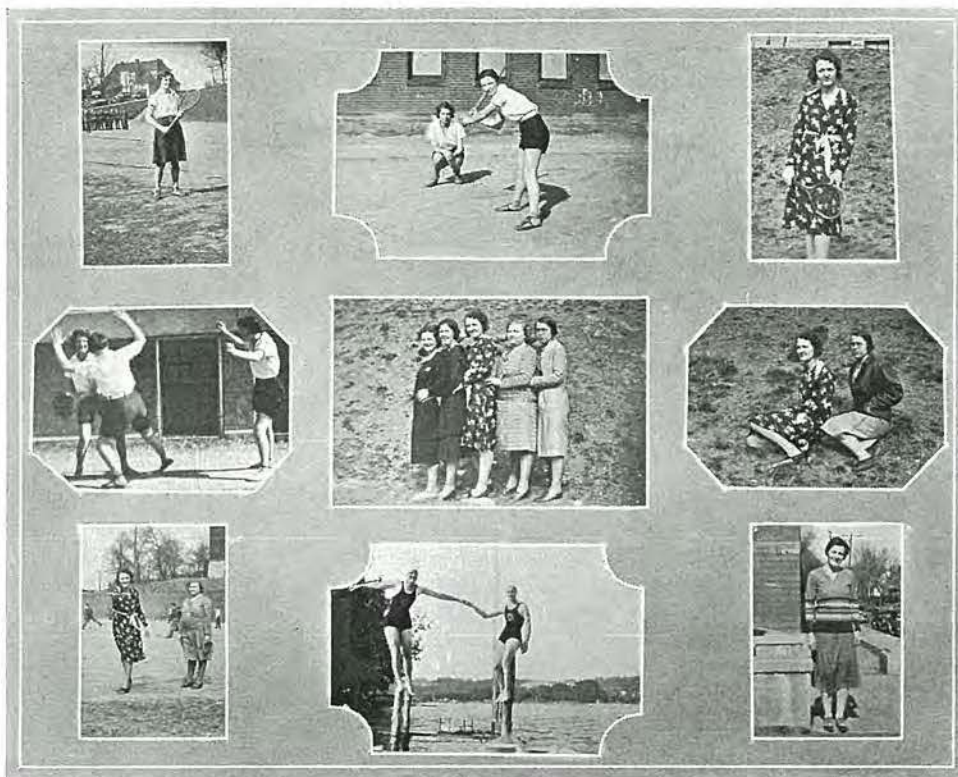
At the end of each year trophies are awarded to the two girls who have, in that year, secured the greatest number of points. For 1930 these awards went to Minnie Reital and Flora Culver.

OFFICERS

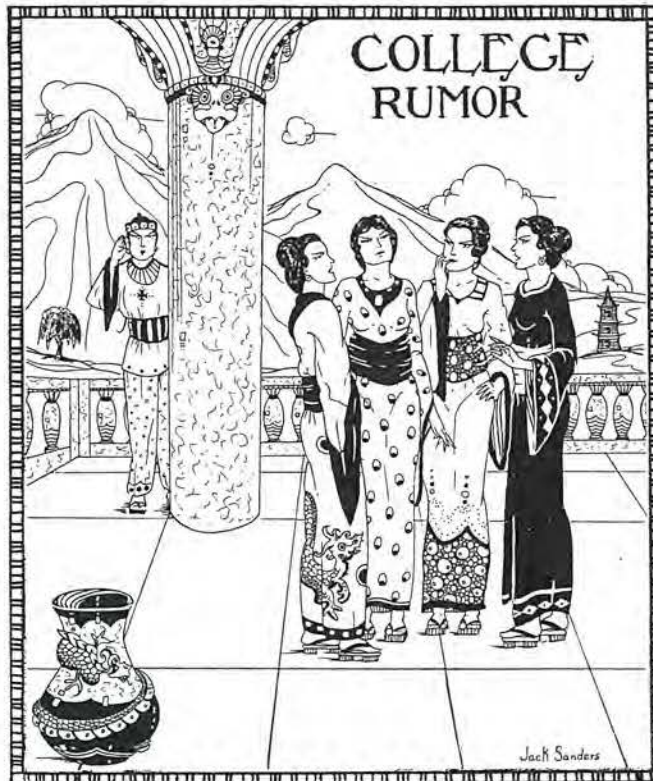
President	Lillian Blanchard
Vice-President	Josephine Lake
Secretary-Treasurer	Lorene Kipp
Reporter	Louise Main

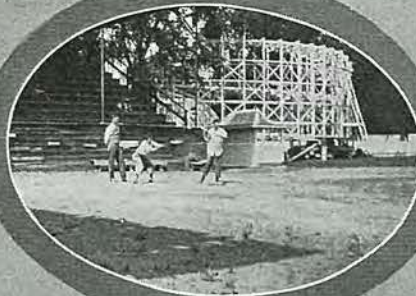
GRIFTON

Women's Athletic Association



The old gym has seen some exciting battles this year, and we present here some of the participants in these battles. Notice the force on the face of our president as she prepares to knock a homer. See the determination with which our basketball teams play—and the expressions of the volleyball girls that speak of happy hours together. We swim, too—we boast two Reserve Examiners and two Senior Lifesavers. And we hike and play tennis, and are adept at horseshoes—our champion and runner-up pose for you. Miss Allen has refereed a number of our games.





PROWL DAY

Every spring Junior College picks itself up and goes prowling. These pictures bring an echo of last year's prowling. Mr. Blomfield starts track event; the Frosh mop up the diamond with the Sophs; the Senate serves lunch; and we, dignified college students that we are, cannot resist the lure of the chute-the-chutes, and the dizzy thrills of the Figure Eight.



GRIFTON

Alumni

Aladdin's lamp! What enchantment, what magic, what dreams! To each of us Aladdin's lamp is connotative of all of which we joyously dream. We are the youth and youth is made to dream, but dreams alone will not suffice. The lamp is at our feet, but it must have the touch of warm hands to become the servant of our wills. We need only to stoop, raise it in our hands, and it is ours—ours to convey us into the realm of heart's desire. It is a fairy-tale come true, one no person can doubt, for before us every day are some of the people who have stooped to raise the lamp and with this, their certificate from our own beloved Junior College, have stepped forward prepared.

These pages are a tribute to those Junior College alumni who have gone forth from this institution; they are rays of light from the magic lamp.

Eugenia Andriano, '28; secretary in office of St. Joseph Central High School.

John Blakely, '28; graduate, Park College, Parkville, Missouri, '30; president senior class of Park; being trained as electrical expert by General Electric Co., Schenectady, New York.

Merritt Blanchard, '25; clerk St. Joseph Stock Yards Bank.

Chester Buzard, '28; student of Commerce and Finance, Drake University, Des Moines, Iowa; student secretary and treasurer, School of Commerce and Finance.

Gavin Doughty, '29; student of Music, Kansas University; Phi Mu Epsilon; organist Plymouth Congregational Church, Lawrence, Kansas.

Margaret Belle Endebrock, '30; artist at Art-crafts Engraving Co.

Edna Gibbons, '27; principal Gower Elementary School, Gower, Missouri. Attended summer session, Wisconsin University, '29.

Dorothy Gilmore, '26; A. B., University of Missouri, '28; teacher of Mathematics, Keokuk, Iowa, '29-'30; teaching and working for M. A., University of Iowa.

William Groneweg, '28; Elmhurst College, Chicago, Illinois, '30; studying for the Ministry, Eden College Seminary, St. Louis, Mo.

Mary Jane Hane, '30; composer of "Go, Griffons, Go"; assistant, St. Joseph Public Library.

Elizabeth Hartwig, '26; Phi Theta Kappa; B. J., University of Missouri, '28; advertising department, St. Joseph News-Press.

Theodore Heim, '28; Phi Theta Kappa; student, Massachusetts Institute of Technology, Cambridge, Massachusetts; editor-in-chief of yearbook.

Virginia Heim, '27; A. B., University of Wisconsin, '29; Girl's Industrial Secretary, Y. W. C. A., Kansas City, Missouri.

GRIFFON

Billy Hinckley, '29; Phi Theta Kappa; student, Rollins College, Winter Park, Florida; chairman of Student-Faculty Committee.

Donald Johnson, '28; graduate New York University, '30; Supervisor Public School Music, Huntington, Penn.

Mercedes Lake, '27; teacher elementary school, Gower, Mo.; attended summer session, Wisconsin University, '28, '29.

Jacquetta Linck, '29; student of Journalism, University of Missouri; president Sigma Alpha Chi, '31; secretary and treasurer Journalism Students Association.

Fred Lodholz, '28; Elmhurst College, Chicago, Illinois, '30; employed by Standard Oil Company, Kansas City, Missouri.

William Miller, '28; A. B., Missouri University; Phi Beta Kappa; graduate laboratory assistant in history.

Orestes Mitchell, Jr., '25; A. B., Missouri University, '27, L. L. B., '29; president Delta Theta Phi; admitted to Missouri Bar, '28; associated with father in law practice, St. Joseph.

Frank Nelson, '28; Phi Theta Kappa; Park College, Parkville, Missouri, '30; exchange student to University of Norway, Oslo, Norway, '29-'30; student assistant to Christopher Morley, Haverford College, Haverford, Penn.

Hazel Petree, '29; student of English, Park College, Parkville, Mo.; teacher of advanced freshman rhetoric, Park College.

Helen Raez, '28; teacher at Freemont, Nebraska; principal Oak Grove School, '30; cadet St. Joseph Public Schools, '31.

Jessie Redfern, '29; cadet teacher, St. Joseph, '30; student summer session, Wisconsin University, '30; clerk, Bliss Junior High School '31.

Louis Reimer, '28; graduate New York University, '30; one of artists on Fortnightly program, September, '30; teacher of violin, St. Joseph.

Ivan Rumsey, '30; passes final exams for West Point entrance in June, '31.

Gertrude Selecman, '26; A. B., Missouri University, '28; English teacher, Robidoux Junior High School.

Leah Spratt, '21; Missouri University, '23; president of St. Joseph College Club.

Bernice Stockler, '28; A. B., Missouri University, '30; working on M. A., Cornell University, Ithaca, New York.

Virginia Story, '28; B. J., Missouri University, '30; reporter on daily paper at Clay Center, Kansas.

Virginia Utz, '28; cadet teacher, St. Joseph, '29; student, Missouri University; member Girl's Rifle Team, '30-'31.

Frank Walker, '29; president J. C. class of '29; student of Chemistry, Rollins College, Winter Park, Florida; editor-in-chief, "Tomokan," Rollins yearbook; member student committee on suggested changes in curriculum.

Lillian Watkins, '22; graduate University of Chicago, '24; M. A., Missouri University; teacher, Cotty College, Nevada, Missouri.



BETWEEN

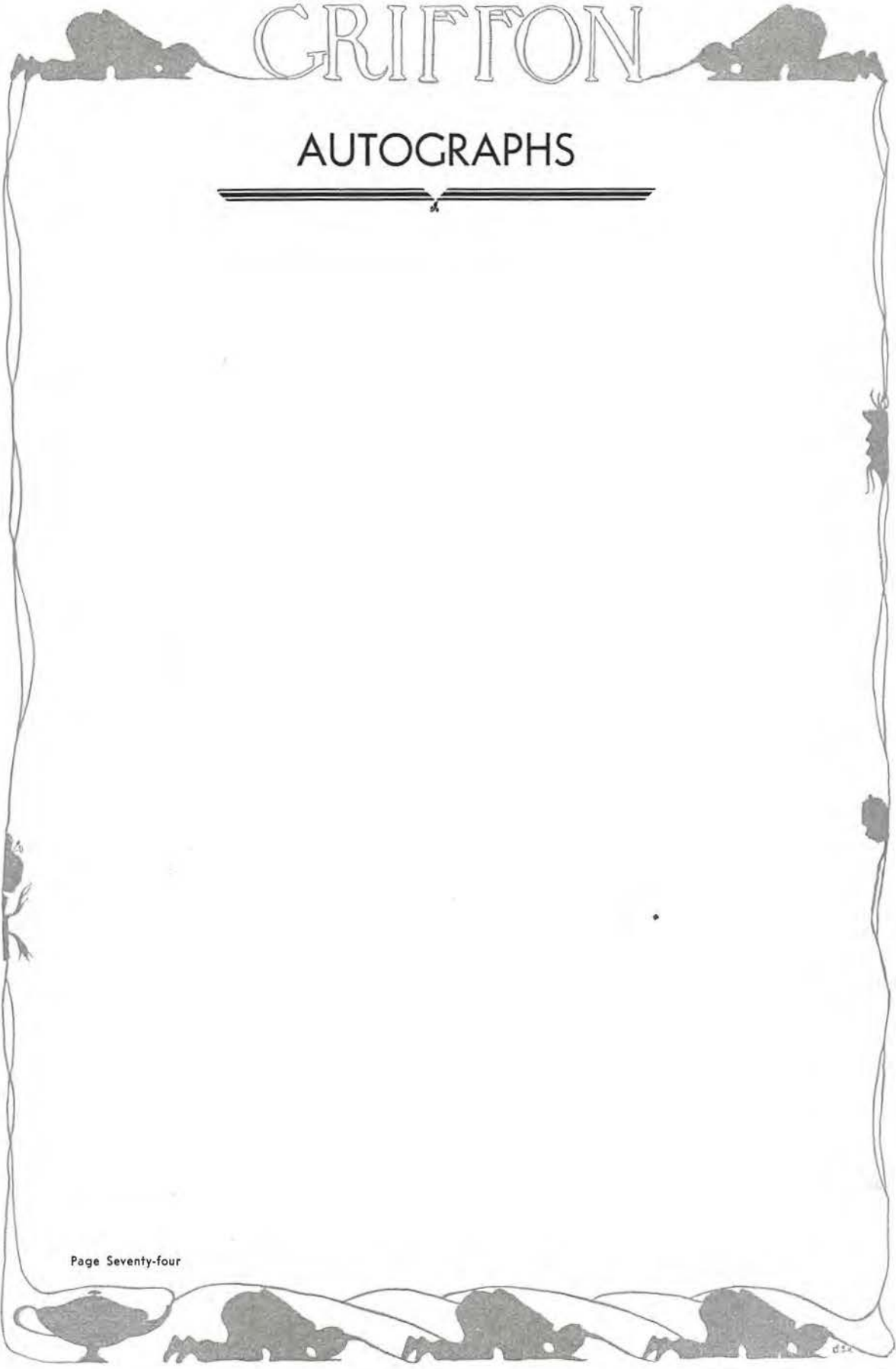
What a taxi that will
be—when it g e t s
older. That life pre-
server really is part of
the equipment. Who
said girls were afraid
of cemeteries?





CLASSES

Our teacher is trying to decipher some Frosh essays. Bicycles built for two must be coming back. Don't let him fool you, the keg is empty.



GRIFTON

AUTOGRAPHS

GRIFTON

Dads' Page

This page was contributed by parents of Junior College students who have indicated their interest in school by supporting one of its activities.

H. M. BRYCHTA Paul's Dad	JOSEPH GOLDMAN Adelaide's Dad	ARTHUR T. MAYER Hazel's Dad
DR. J. C. CURTIS Harry's Dad	LESLIE F. HAUCK Jean's Dad	R. W. MUDGETT Dorothy's Dad
J. R. ALBRIGHT Claribel's Dad	R. W. HAYES Ailene's Dad	DELAWARE PARKER Idella and Marguerite's Dad
P. H. BROWN Gertrude's Dad	F. E. WHITCHURCH Frank's Dad	H. W. WALKER Mary Lee's Dad
DR. A. H. KELLEY Virginia's Dad	FRANK WALL David's Dad	T. Z. MAYS Tom's Dad
FRANK O'ROURKE Mary Frances' Dad	BEN A. WEBSTER Milton's Dad	ORESTES MITCHELL Francis' Dad
J. W. MOYLES Mary Jane's Dad	W. O. DIDLO Chester's Dad	SAMUEL MUIR Jack's Dad
H. D. JUDSON Virginia's Dad	H. HERMAN Milton's Dad	REV. C. R. SWAFFORD Paul's Dad
G. M. THOMPSON Eleanor's Dad	P. J. HOLLAND Bill's Dad	H. M. WITT Grace's Dad
FRANK KIPP Lorene's Dad	FRANK JUTTEN Franklin's Dad	DR. B. W. TADLOCK Howard's Dad
LEO V. ANDERSON Thekla's Dad	W. R. ERWIN Gene's Dad	JAMES H. NICHOLAS Paul's Dad
T. J. BACHMAN Bernice and Beatrice's Dad	J. L. FLEMING Wilson's Dad	G. D. STATLER Mary's Dad
L. R. BEATY Juanita's Dad	DR. G. M. KIMBALL Ruth's Dad	A. D. GOLDBERG Herschel's Dad
W. E. BLANCHARD Lillian's Dad	C. F. HESSLER Ida's Dad	WALTER D. LADD Jimmie's Dad
S. E. CLOUD Ella's Dad	GEORGE C. HURST Asenath's Dad	EDWIN COONS Cliff's Dad
S. O. DENNING Velma's Dad	W. A. McNEELY Mary's Dad	E. COOPER Eugene's Dad
D. FINE Anna's Dad	EUGENE A. MARECHAL Virginia's Dad	J. A. FERRIS Deam's Dad
DR. FREDERICK ELISCU Helen's Dad	V. H. SANDERS Jack's Dad	CHARLES ALSBAUGH Jack's Dad
P. L. BOWERSOX P. L.'s Dad	NATE ROTHSTEIN William's Dad	

EDUCATION

Tomorrow's world will be a real world. The world has already been stripped of many of the fanciful legends which have fed our minds in the past. Science will have demonstrated its reality in many ways about which we hardly dare to think. Our feet must be upon the ground. It will be a matter-of-fact world. As now we are in an economic age, tomorrow we will be confronted even more than today with stark realism. Bread and butter problems will remain. Economic areas must be lowered or abolished altogether. The stark realist will be here with all his strength and solemnity and self-sufficiency. We need to prepare for him, for the facts of human life—facts that may be handled by the touch and tasted in bitterness or in joy. We will need for tomorrow a knowledge of things, and of the science of things, of business and the economics of business, of government and the scope and authority of government—whatever counts in the making of a living for the physical man. We must come to grips with reality, a necessity to man always, and whether they like it or not. But tomorrow even more than today. As one contemplates the distress, the poverty, the unemployment, the widespread revolution and increase of death-dealing inventions, the depression and sickness of the world today, shall we, dare we, be unprepared for the grim realities of tomorrow? It is true that the race is between effective education, righteous education, and overwhelming catastrophe, for the capture of the city of man's soul, of the citidels of civilization itself.

What is an educated man, yesterday, today, and tomorrow? He expresses himself clearly in written and in spoken speech. He thinks straight. He does worth-while things in the right way. He lives comfortably and helpfully with other people. He knows books and the hearts of men. He acknowledges the supremacy of the spiritual to the material in all things. He has an inquiring mind, an understanding heart, a noble soul. He is a gentleman, unafraid. It is such as he that with noble curiosity, with unfeigned faith, with unfettered imagination and hope, in the fine lines of Browning, "Face the unknown future with a cheer."

Walter Williams -

President, University of Missouri.

(Space for this article was paid for by a St. Joseph friend of Junior College)

ADVERTISEMENTS



GRIFFON

WHEN YOU THINK OF PHOTOS, THINK OF




SCHULTZ STUDIO

805½ FREDERICK AVENUE

"If there's beauty, we take it,
If none, we make it."

GRIFFON

COMPLIMENTS OF

 ST. JOSEPH WATER CO.

Know Your Cleaner
IT PAYS

CALL
STUEBNER'S
1101 SOUTH 18TH STREET
PHONE 6-0664

BEAUTY ACADEMY

711 Francis Street
ST. JOSEPH, MISSOURI

Learn a Profession

FOSTER TAILORING CO.
213 South Seventh Street

—
Specializing in
YOUNG MEN'S STYLES FOR
COLLEGE STUDENTS

F. C. O'DONOGHUE
FRUIT CO.

—
Headquarters for
Fresh Fruits and Vegetables
PHONE 6-0365

Cripe's Bread

IS

Good Bread

CRIFTON

WM. E. JOHNSON, B. S. C., Pres.

LUCY HAAS, B. A., Treas.

MISSOURI BUSINESS SCHOOL

"Honesty, Loyalty, Ability"

716½ FELIX ST.

OPPOSITE JENKINS

COMPLIMENTS OF
BROWN TRANSFER AND
STORAGE CO.

Operating
YELLOW CABS

PHONE 6-2255

STORY
SERVICE
SATISFIES

Laundry—Dry Cleaning

STORY LAUNDRY

Tenth and Olive
PHONE 6-0622

COMPLIMENTS OF

Mannschreck's Book Store

117 NORTH SEVENTH STREET

Best Wishes to the
Class of 1931

THE
ROBIDOUX HOTEL

W. E. DOWNS, MANAGER

FLEEMAN
FUNERAL
HOME

Frederick
At Twentieth

We Dress the Eyes of the People
ST. JOSEPH OPTICAL CO.

110 South Seventh Street

GRIFFON



TELEPHONE 6-1348J

Periodicals, Books, Office Supplies,
High School and Junior
College Books

ok by 3/25
copy

SMITH'S BOOK STORE
G. F. SMITH, Prop.
114-116 South Sixth Street

COMPLIMENTS OF
L. O. WEAKLEY

COMPLIMENTS OF
A. J. FELLING
HARDWARE, SEEDS AND
PAINTS

1907 Frederick Avenue
ST. JOSEPH, MISSOURI

COBB SHOE CO.
416 Felix Street

HOME OWNED STORE
Keep Your Money in St. Joseph

GRIFFON

AFTER JUNIOR COLLEGE, WHAT?

If you have a profession in mind such as teaching, law, or medicine, continue with your College or University training.

If you have in mind the great profession of Business, and are willing to do some intensive work and study for a few months, we can help you cash in on your general education.



FREDERICK AVE, AT 9TH

PHONE 6-0700

Member National Association of Accredited Commercial Schools

WESTMINSTER PHARMACY

CHAS. McROBERTS, Prop.

2518 FREDERICK AVENUE

St. Joseph, Missouri

POLLOCK & COMPANY

CLASS RINGS AND PINS

Made-to-Order

110 1/2 North Eighth Street

PHONE 6-1555

ST. JOSEPH SPORTING GOODS CO.

PHONE 6-0728

420 FELIX

Outfitters for Schools and Colleges
Athletic Goods, Radios, and
Magazines

WHOLESALE

RETAIL

COMPLIMENTS OF

GUSTAV A. LAU, M. D.

PHYSICIAN AND

SURGEON

CRIFTON

COMPLIMENTS OF
HILLYARD CHEMICAL CO.
ST. JOSEPH, MISSOURI

GOLDEN WEDDING
COFFEE

—
THE CARDER WHOLESALE
GROCERY COMPANY
Distributors

OGDEN'S BARBECUE INN
"The Home Away From Home"

LUNCHES AND SANDWICHES OF
VARIOUS KINDS

Barbecued Meats of All Kinds

Karnes and Savannah Roads
ST. JOSEPH, MISSOURI

COMPLIMENTS OF
ST. FRANCIS HOTEL

St. Joseph Most Popular Hotel and Eating Place
PETTIGREW BROS., Mgrs.

=====
COMPLIMENTS OF

JOHN ALBUS
=====



FOR YOUR
CHUMMY LETTERS

WESTERN TABLET & STATIONERY CO.

GRIFFON

M. M. JOHNSON CO.
OLD TRUSTY INCUBATORS AND BROODERS
ST. JOSEPH, MISSOURI

PHONE 4974
Open Day and Night
(CHICK) GIBSON
AUTO INN
(Former J. C. Student)
WASHING, POLISHING, STORAGE,
OILS, ALEMING, PAINTING,
REPAIRS
10th and Robidoux St. Joseph, Mo.

HEATON, BE GOLE AND
BOWMAN

ESTABLISHED 1842
319 South Tenth Street
AMBULANCE SERVICE

COMPLIMENTS OF
ST. JOSEPH TRANSFER CO.
DRAYAGE OF ALL KINDS STORE AND OFFICE FIXTURES

Just Taste
Its Richness

Justrite

ICE CREAM

WESTERN DAIRY AND
ICE CREAM CO.

OVER
25,000
ITEMS
every day
at Deep-Cut
Prices
6TH
FRANCIS
Katz
Drug Company Inc.

GRIFFON



Congratulations to the
"GRIFFON" EDITORIAL STAFF
And Best Wishes to
STUDENT BODY OF
JUNIOR COLLEGE

COMPLIMENTS

ERKEN & VAN ZANDT

MANUFACTURING JEWELERS

118½ North Eighth Street

WING PRINTING CO.

School Papers, Booklets, Catalogues,
Commercial Forms, Envelopes,
Letterheads, Wedding
Invitations

PHONE 6-4903 320-322 S. 4TH ST.

DRINK—

HUND & EGER

QUALITY SODA WATER

COMPLIMENTS OF

ST. JOSEPH TRUNK

COMPANY

MEET ME AT

JONES'

CORNER SIXTH AND EDMOND

CRIFTON

COMPLIMENTS OF
FOGARTY KNEIB & CO.

THE O. K. STORE

Sixth and Hickory Streets

Read ALL the Ads and Then Come Here
And Buy Cheaper

WE DELIVER ANY PLACE

ZORIC DRY CLEANING EXCLUSIVE

PEARL LAUNDRY
NU-WAY LAUNDRY

ARTESIAN ICE & COLD STORAGE CO.

Second and Atchison

Main and Jule

Twentieth and Olive

6-2415

6-0588

6-0013

CLARENCE FISHER

Dealer in

QUALITY GOODS

2311 South 11th Street


PHONE 6-0419

BARNSDALL REFINING COMPANY

E. A. MICHEL, Agt.

COMPLIMENTS OF
LEHR CONSTRUCTION CO.

2115 Frederick Avenue
ST. JOSEPH, MISSOURI



GRIFFON

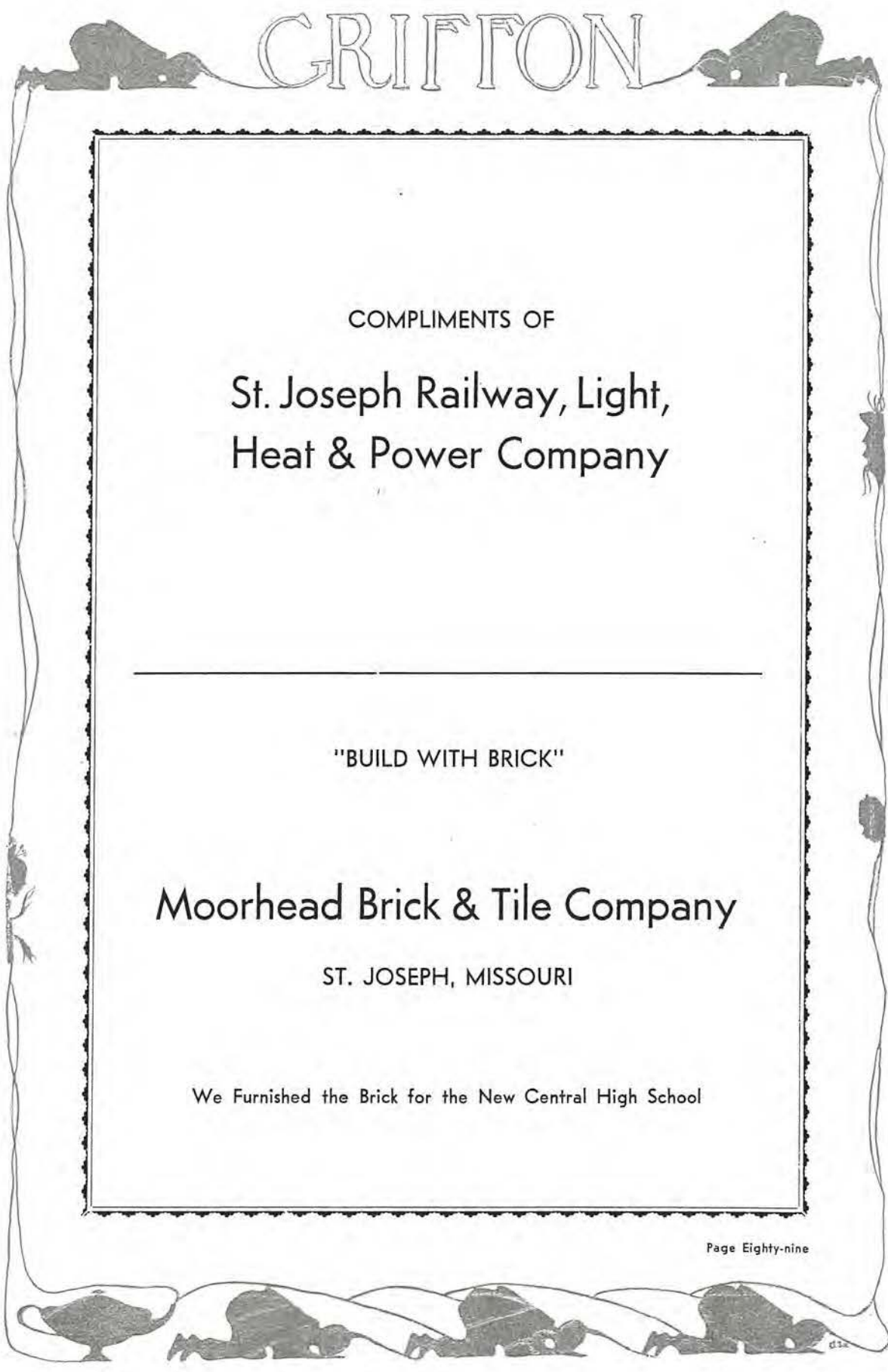
WM. B. ITTNER, INC.

ARCHITECTS AND ENGINEERS

Continental Life Building

ST. LOUIS, MISSOURI

Specializing in Public Schools and Institutional
Buildings of All Character



CRIFTON

COMPLIMENTS OF

St. Joseph Railway, Light,
Heat & Power Company

"BUILD WITH BRICK"

Moorhead Brick & Tile Company

ST. JOSEPH, MISSOURI

We Furnished the Brick for the New Central High School

CRIFTON

Brick Work on Thomas A. Edison School Done by

MITCHELL THOMAS

"LUSCIOUS CANDY"

Maple Cream, Butter Caramel, Fresh
Peanuts, All Smothered in Rich
Milk Chocolate

5c



TRY ONE TODAY

CHASE CANDY CO.

ST. JOSEPH, MISSOURI

PATRONIZE

OUR

ADVERTISERS

THE BIG RED APPLE

(Hunt Bros. Owners)

ROOF GARDEN

FILLING STATION

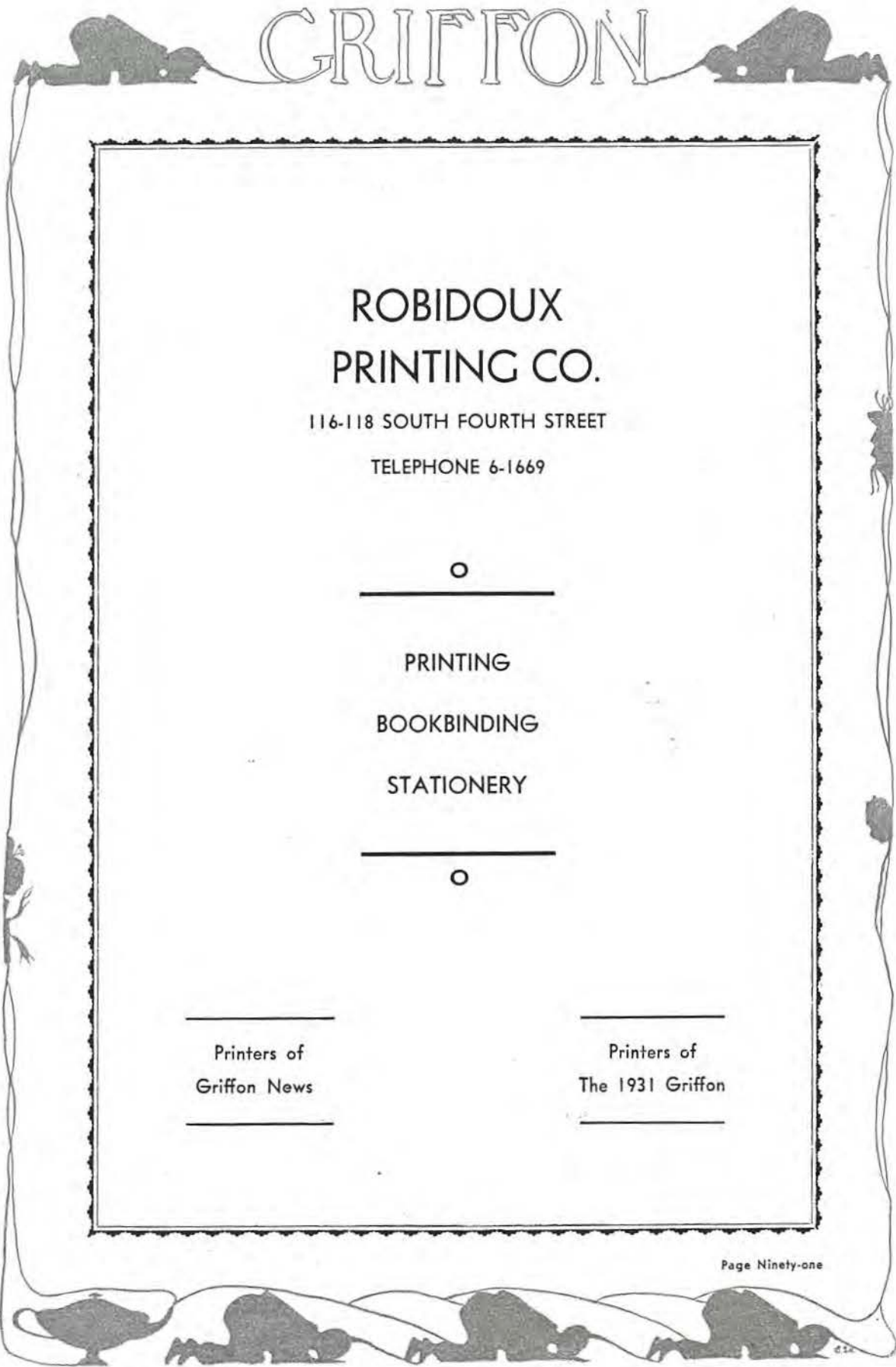
Apples, Cider, Refreshments and Dancing

Eight Miles West of St. Joseph on Highway No. 36

INDEPENDENT LUMBER & COAL CO.

711 Hickory Street

PHONE 6-1292



GRIFFON

ROBIDOUX PRINTING CO.

116-118 SOUTH FOURTH STREET

TELEPHONE 6-1669

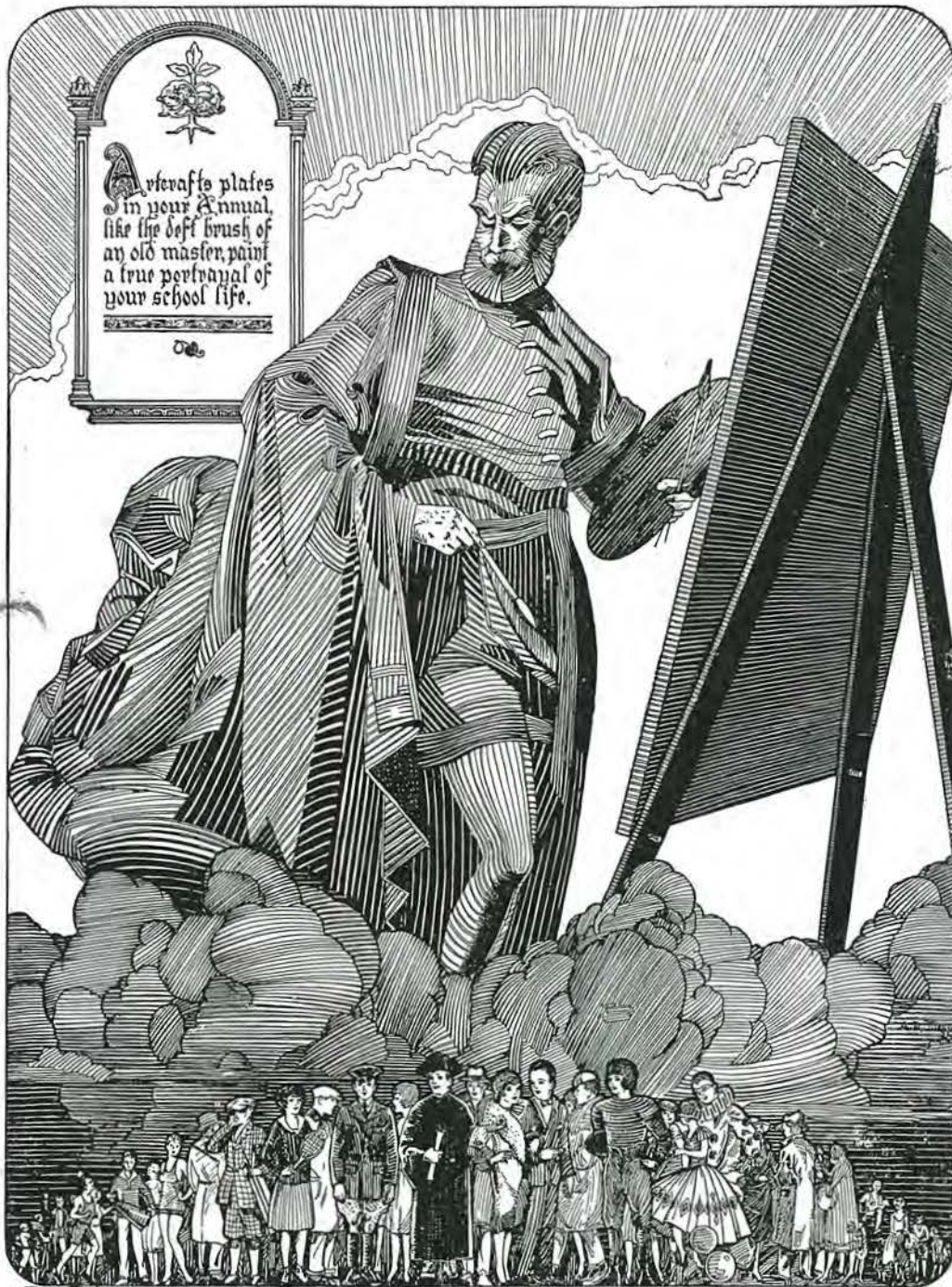
○

PRINTING
BOOKBINDING
STATIONERY

○

Printers of
Griffon News

Printers of
The 1931 Griffon



ARTCRAFTS ENGRAVING CO
St. Joseph, Missouri.